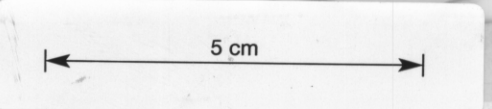


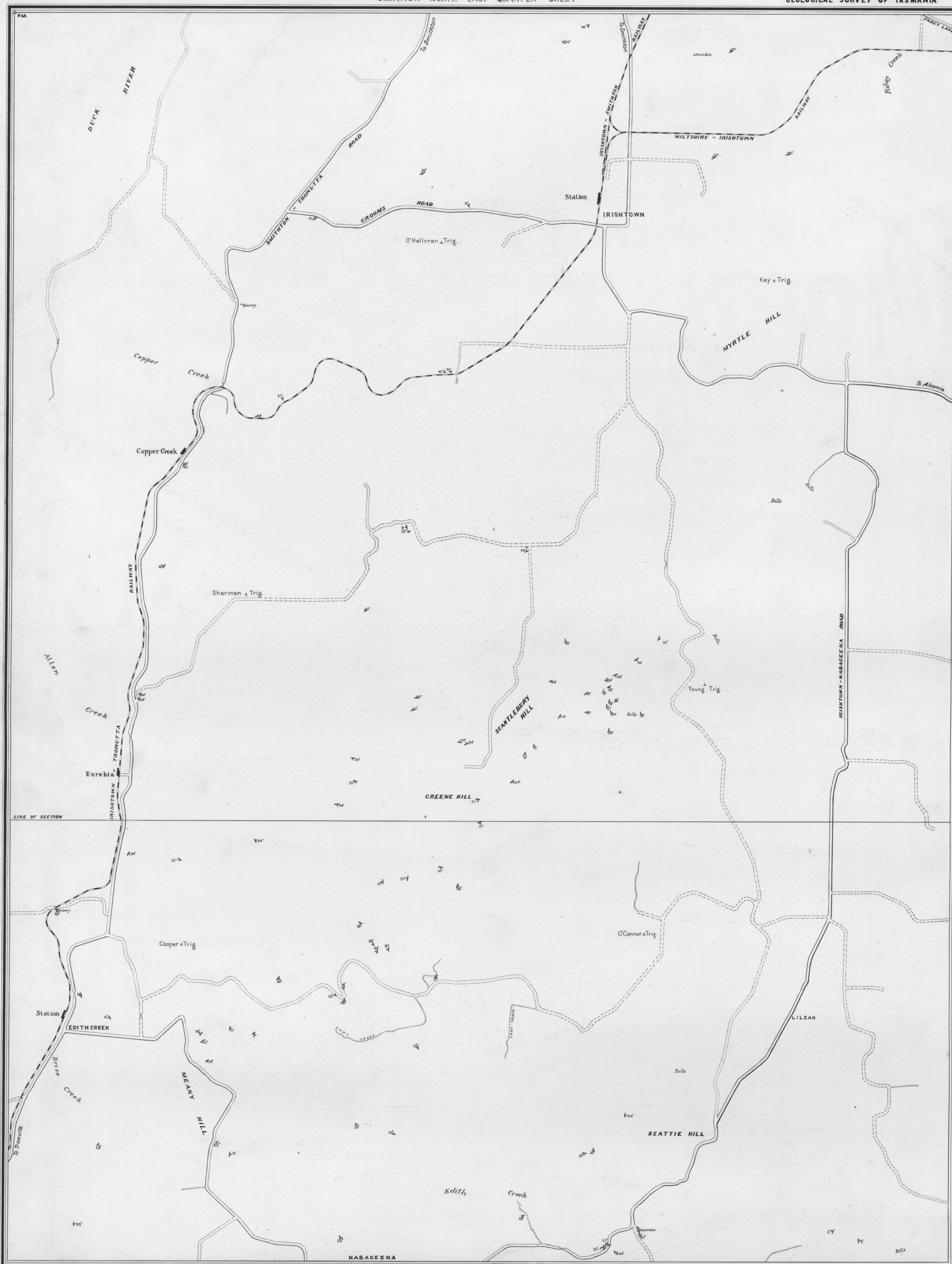
960-21



SMITHTON S. E. QUARTER SHEET

SMITHTON NORTH EAST QUARTER SHEET

DEPARTMENT OF MINES
GEOLOGICAL SURVEY OF TASMANIA

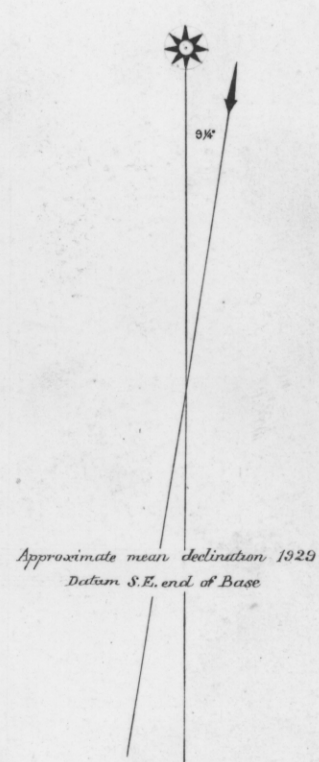


EXPLANATION of Geological Signs and Colours

QUATERNARY	Recent	Alluvium etc.	
	Pleistocene	Marine sands, gravels etc.	
TERTIARY	Diphasic Series	Sandstone, clays, lignites, conglomerates, grits, etc.	
		Dolomite stage	
		Slates, breccias & limestone stage	
		Cherts, slates etc. substage Dolomite substage	
PALAEOZOIC CAMBRO-ORDOVICIAN	Diphasic Series	Grey-green Quartzite stage	
		Basalt	
		Dolerite	
IGNEOUS	DEVONIAN TERTIARY	Strikes and dip	

LEGEND

First class Roads shown	
Mettled do do	
Unmettled do do	
Triangulation & Permanent Marks shown	



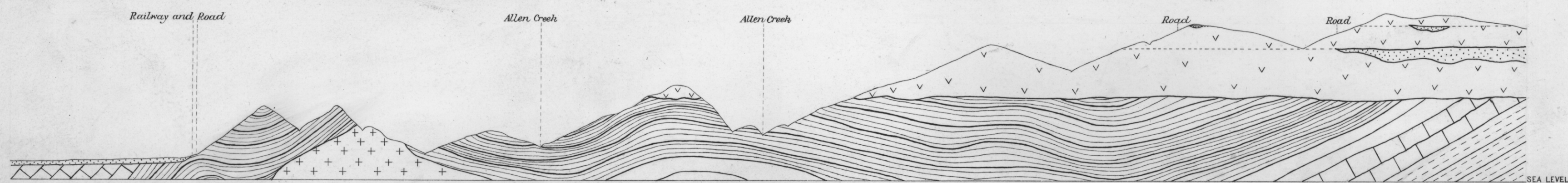
Leveling, Triangulation and Tacheometric survey by R.M. Harrison, District Surveyor.
Topography and Geology by F. Blake and K.J. Finlayson B.Sc. Field Geologist.
Surveyed in 1908, 1909 and 1910.
Drawing by F. Blake.

Scale One Inch to 20 Chains

Photo Aerially by Walter Stammers, Government Printer, Hobart Tasmania

Contour Interval - 25 Feet
Public Works Datum - Mean Sea Level, Hobart

Diagrammatic Section showing the general relations of the rocks along the line drawn across the map



Horizontal Scale, One inch to 20 Chains.

Vertical Scale, Three times the Horizontal.