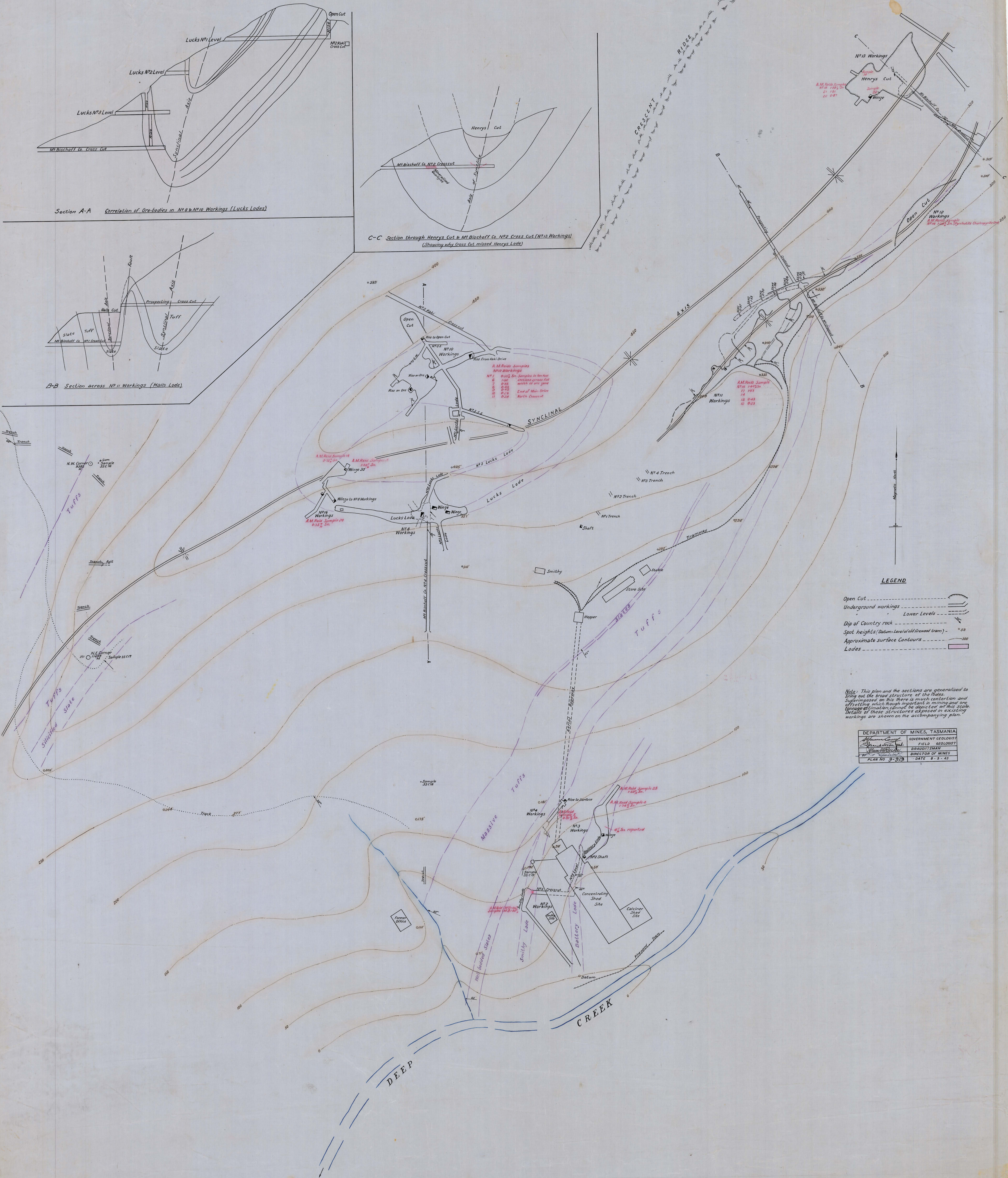


# STRUCTURAL INTERPRETATION OF MOUNT CLEVELAND TIN LODES

Scale: 1 inch = 40 Feet



### LEGEND

- Open Cut
- Underground workings
- Lower Levels
- Dip of Country rock
- Spot heights (Datum: Level of old levelled tram)
- Approximate surface Contours
- Lodes

Note: This plan and the sections are generalized to bring out the broad structure of the lodes. Superimposed on this there is much variation and irregularities which though important in mining and are of great value in determining the dip of the lodes. Details of these structures exposed in existing workings are shown on the accompanying plan.

DEPARTMENT OF MINES, TASMANIA	
J. H. G.	GOVERNMENT GEOLOGIST
J. H. G.	FIELD GEOLOGIST
J. H. G.	DRAUGHTSMAN
J. H. G.	DIRECTOR OF MINES
PLAN NO. 972A	DATE 8.3.45

972A/35

403  
52146  
AH

972A/35