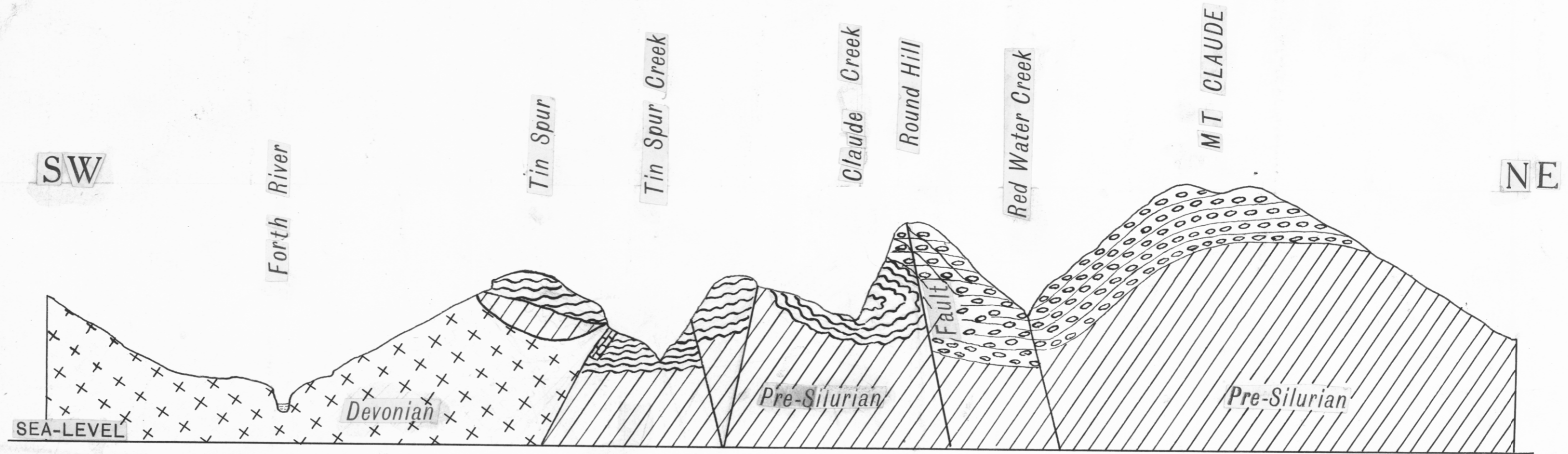


99 F

5 cm

50

PLATE II.



Granite & Granite Porphyry, [Symbol]

Limestone [Symbol]

Tubicolour sandstone, conglomerate and quartzite [Symbol]

Schistose Porphyroid (Felspar por & Quartz porphyry) [Symbol]

West Coast Range conglomerate [Symbol]

99F/37

a. W. Insook Reid  
Asst. Geol. Geologist  
30 Nov. 1918.