

0055-137

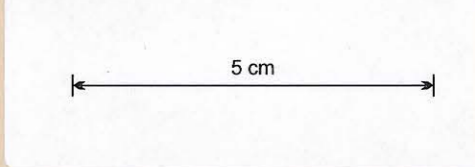
ELECTROLYTIC ZINC COMPANY OF AUSTRALASIA LIMITED

WEST COAST MINES

DEPT.

ROSEBERY MINE

19 N° 2 SUB LEVEL

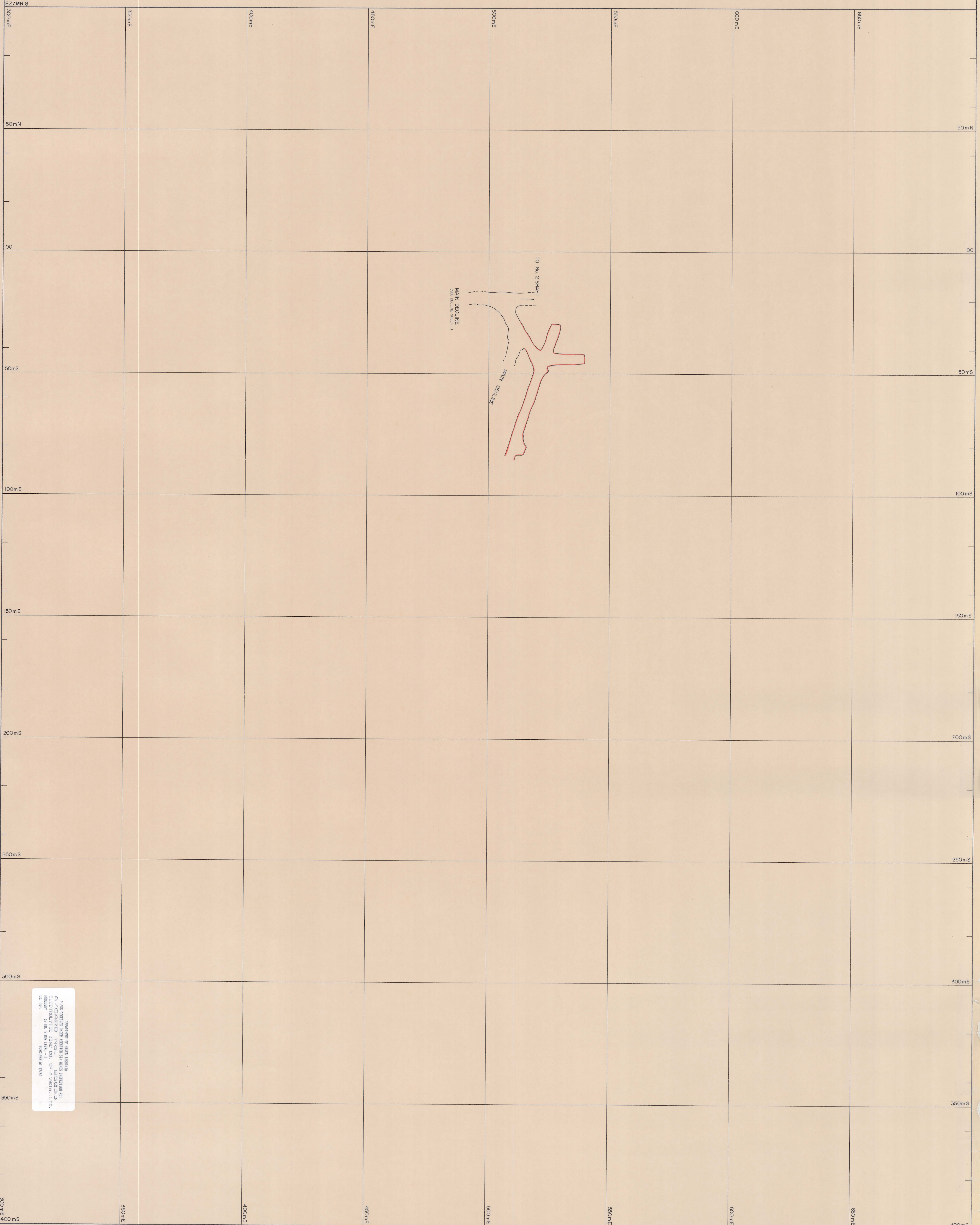
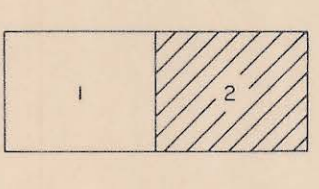


SCALE:	FILE:
DESIGN:	DRAWING No.
SURVEY:	2

By	Date
G M Bennett	03 01 85
Drawn	
Traced	
Checked	
Approved	

Revisions	No.		By		Date		Details		App.		References	

DEPARTMENT OF MINES
 BROUGHT TO DATE : 31 DEC 1984
 MINE MANAGER : *B. B. B.*
 MINE SURVEYOR : *P. H. H.*



APPROVED BY: *[Signature]*
 ELECTROLYTIC ZINC COMPANY OF AUSTRALASIA LIMITED
 WEST COAST MINES DEPARTMENT
 ROSEBERY MINE
 19 N° 2 SUB LEVEL
 DRAWING No. 2