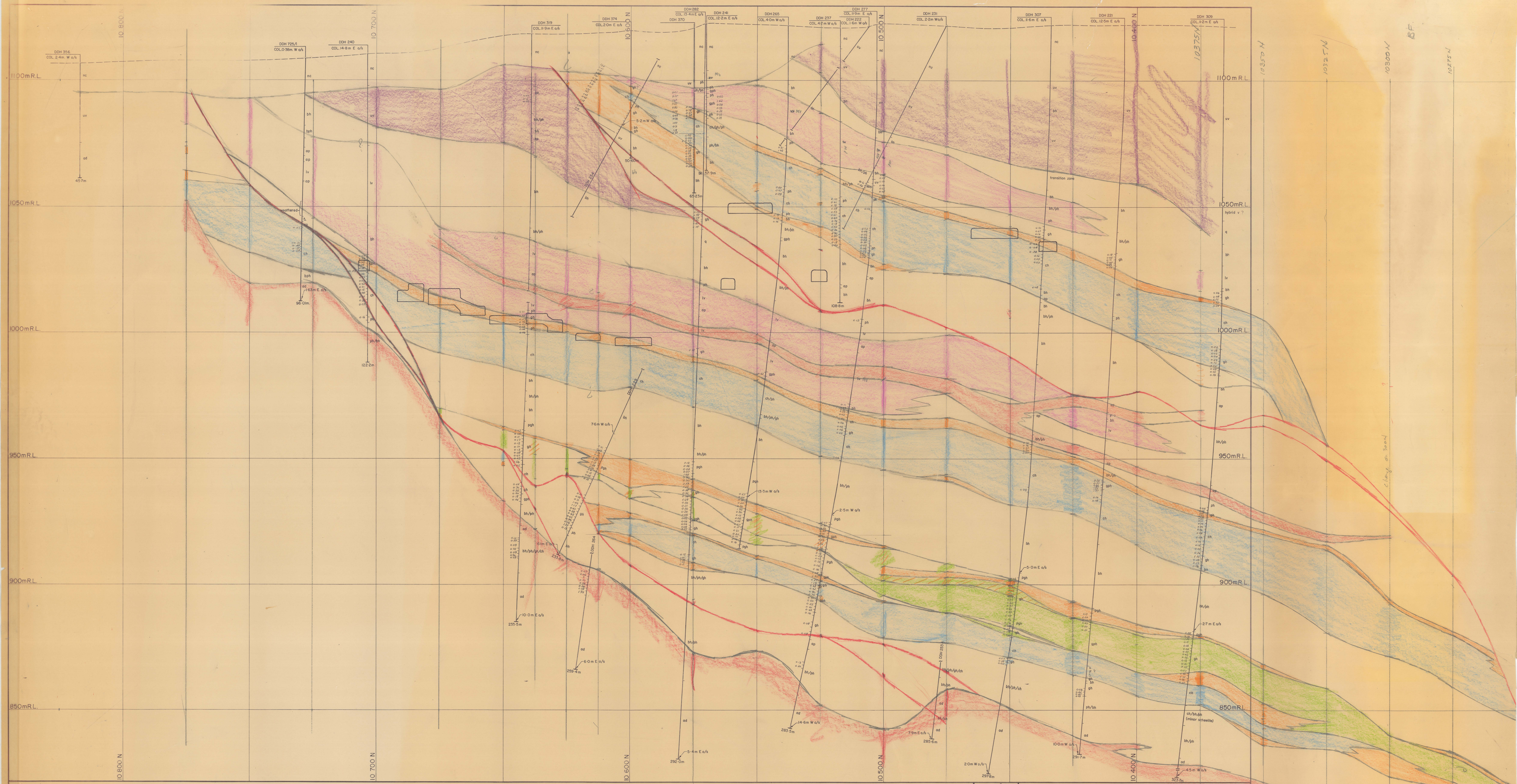


0374_1114



Legend:	uv Upper metavolcanics	pph Pyroxene garnet hornfels	ad Adomellite	bbb Breccia	DDH 479 COL 9.3m E o/s Indicates collar location as being 9.3 metres East of section
bh Basite hornfels	gh Mineralized skarn (> 0.25% WO ₃)	op Aplite	Fault showing relative movement	↔ Degree of uncertainty in fault position	Indicated point is 7.1 metres East of section
ph Pyroxene hornfels	gh Unmineralized skarn (< 0.25% WO ₃)	C1 Ore lens designator	↔ Degree of uncertainty in fault position	Figures refer to assay results in % WO ₃	↔ 7.1m E o/s
ch Marble	ch/gh Banded footwall beds		↔ Degree of uncertainty in fault position	✱ Angle of bedding to long axis of core	17.3 m
iv Lower metavolcanics	q Quartzite		↔ Degree of uncertainty in fault position	nc No core recovered	

0374_1114

SCALE: 1:500

5m

GEPEKO LIMITED
 KING ISLAND GROUP
No. KG3-24-009

BOLD HEAD OREBODY
GEOLOGICAL LONG SECTION
 40 350 E

DATE: AUG, 1973
 GEOLOGIST: S.G.B.
 DRAWN: D.S.
 CHECKED: M.C.R.