



# Mineral Resources Tasmania

## REPORT 1993/31

### Partial Inventory of Sites in Rainforest used for Mining or Exploration Purposes

*by C. A. Bacon and J. Lynch*

#### CONTENTS

SUMMARY .....	2
INTRODUCTION .....	3
Background .....	3
Project objectives .....	3
Implementation .....	3
Funding .....	3
Acknowledgements .....	3
RAINFOREST INVENTORY .....	3
Overview .....	3
SITE REPORTS .....	10
Blue Tier .....	10
Sweeneys (Birthday) Mine .....	13
Globe Mine .....	13
Mount Lindsay Mine .....	15
Ringville Township .....	17
North-East Dundas Tramway .....	17
Maestries North (Concert Creek) .....	19
Comstock Valley .....	20
Sterling Valley .....	22
Silver Falls Track .....	24
Ramsay Track .....	25
Specimen Reef .....	27
Bulgobac River .....	28
Mount Stormont .....	30
REFERENCES .....	32

## LIST OF FIGURES

1. Rainforest coverage and Mirloch points, Map 1	4
2. Rainforest coverage and Mirloch points, Map 2	5
3. Location of mine sites, Blue Tier	11
4. Mine sites and rainforest distribution, Blue Tier	12
5. Mine sites and RAP boundary, Blue Tier	12
6. Location of Sweeney's and Globe mines	13
7. Rainforest cover, Sweeney's and Globe mines	14
8. Location of Mt Lindsay mine	15
9. Rainforest cover, Mt Lindsay mine	16
10. Location of Ringville township, North East Dundas Tramway, and rainforest cover	18
11. Location of Maestries North track	19
12. Rainforest cover, Maestries North track	20
13. Location of Comstock Valley track	21
14. Detailed location of Comstock Valley track	21
15. Location of Sterling Valley track	22
16. Rainforest cover, Sterling Valley track	23
17. Location of Silver Falls track	24
18. Rainforest cover, Silver Falls track	25
19. Location of Ramsay track	25
20. Rainforest cover, Ramsay track	26
21. Location of Specimen Reef	27
22. Rainforest cover, Specimen Reef	28
23. Location of Bulgobac River site	28
24. Rainforest cover, Bulgobac River site	29
25. Location of mine sites and tracks, Mt Stormont	30
26. Mine sites and rainforest cover, Mt Stormont	31

## SUMMARY

A partial inventory of sites in rainforest used for exploration or mining purposes has been compiled under the auspices of the National Rainforest Conservation Program (NRCP). The NRCP is an initiative jointly funded by the Commonwealth and State Governments, with this particular project co-ordinated by Mineral Resources Tasmania.

An overview of the number of sites in rainforest was gained by combining GIS coverage of rainforest with mineral deposit and mine location information. All points in this overview have either been mined in the past, or are currently being mined, prospected or explored. These points represent areas of very high prospectivity. The sites listed in the overview are **not** a list of sites requiring rehabilitation.

Several site investigations in areas of rainforest disturbed by past mining and mineral exploration activities have been undertaken. Site disturbances include old mining areas, access tracks, drill pads, weed invasions, old tramways, costeans and old mining townships. This report provides descriptions of fourteen sites, together with maps showing their respective locations.

Recommendations are made on the rehabilitation potential of some of these sites. Some have adequately revegetated on their own, or need to remain open for future access; however others are in need of rehabilitation treatment, especially old access tracks suffering from severe erosion. It is anticipated that these recommendations will be useful for the planning of future rehabilitation projects in this field, should funds for this purpose become available.

The sites are located in the following areas: Blue Tier; Bulgobac River; Comstock Valley; Globe Mine; Maestries North (Concert Creek); Mount Lindsay Mine; Mount Stormont; North East Dundas Tramway; Ramsay Track; Ringville Township; Silver Falls Track; Specimen Reef, Sterling Valley; and Sweeneys (Birthday) Mine.

## INTRODUCTION

### **Background**

A rainforest inventory project (partially funded under the Tasmanian component of the National Rainforest Conservation Program — NRCP) commenced in 1989, with the aim of assisting in future management decisions on Tasmanian rainforest. This was to be achieved by providing a list of sites located in rainforest which were disturbed by mining or exploration activities, and which could have potential for re-use, preventing duplication of these existing clearings or possibly potential for rehabilitation.

The NRCP was established to ensure that the values of Australia's rainforests are identified, promoted, protected and conserved for future generations. The Tasmanian program is co-ordinated by the Forestry Commission in consultation with the Commonwealth Department of the Arts, Sport, the Environment and Territories (DASET).

### **Project objectives**

The three main objectives to help achieve the project's aim were:—

- to investigate a range of rainforest sites disturbed in the past by mining or exploration activities;
- to compile an inventory of some of these sites; and
- to provide recommendations on the potential for rehabilitation at these sites.

### **Implementation**

A project officer was initially briefed to carry out investigations of sites with potential for inclusion on this inventory, and to conduct research and report on each site.

However, the task proved to be of a much larger magnitude than first envisaged. The research required to identify and locate such sites, and provide a work history of each location, was considerable. With the funds and resources available individual reports were compiled on fourteen sites; these are detailed in this report.

An overview was gained of the potential number of such sites from the superimposition of the GIS coverage of rainforest in Tasmania (data owned by the Forestry Commission) and the mineral deposit database (MIRLOCH) held by Mineral Resources Tasmania. Site visits and assessment of each of these sites is well outside the scope and resources of this particular project.

### **Funding**

The NRCP provided \$7,500 towards the project. A matching sum, of in-kind support and services, was made by Mineral Resources Tasmania. These resources were insufficient to finish the project which has been completed in-house by staff of Mineral Resources Tasmania.

### **Acknowledgements**

This report was researched and compiled by Ms C. A. Bacon and Ms J. Lynch using data partly collected by Mr P. Ruzicka, Ms K. McClymont, Mrs S. Cumming, and Mr D. Gatehouse. The maps were produced by Mr K. Bird. The cover photo was taken by Ms C. A. Bacon.

## RAINFOREST INVENTORY

### **Overview**

By combining up-to-date GIS data of rainforest coverage of Tasmania (supplied in digital format by the Forestry Commission) and Mineral Resources Tasmania's MIRLOCH data an overview of the areas of known mineralisation and existing rainforest was obtained.

The MIRLOCH database (Mineral Resources Location and Characterisation System) contains entries of known mines and mineral prospects, which are either currently being worked, or have been worked or explored in the past. These sites, of known mineralisation, are extremely prospective and are of great interest to the mining industry. The MIRLOCH points in rainforest **ARE NOT** in themselves a list of sites to rehabilitate.

Figures 1 and 2 show MIRLOCH data points and rainforest coverage of western Tasmania. A list of these points (collected in groupings per 1:100 000 map sheet) is given in Table 1.

MINERAL RESOURCES TASMANIA  
RAINFOREST / MIRLOCH REFERENCE POINTS

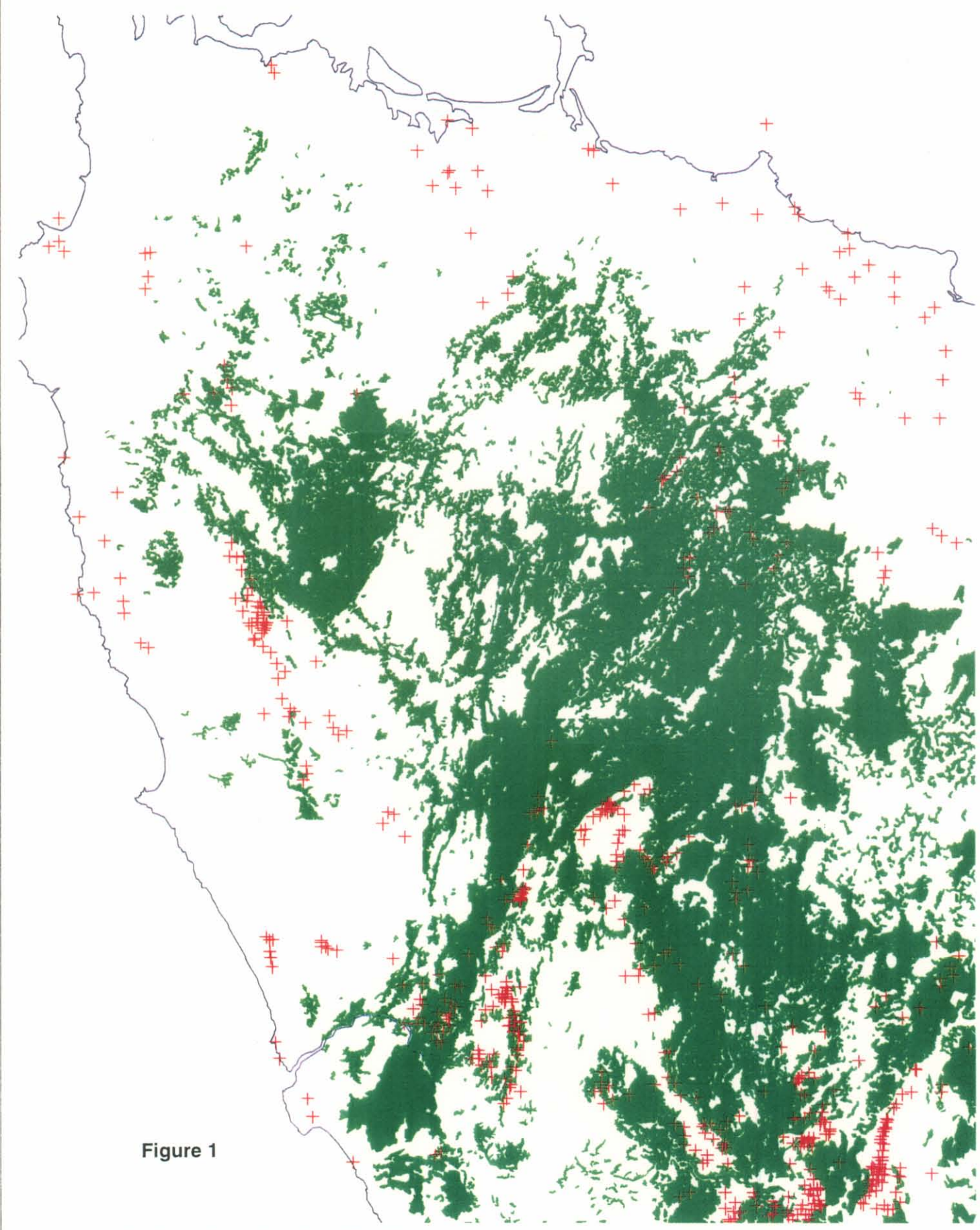


Figure 1

Rainforest data supplied courtesy of the Forestry Commission.



MINERAL RESOURCES TASMANIA  
RAINFOREST / MIRLOCH REFERENCE POINTS

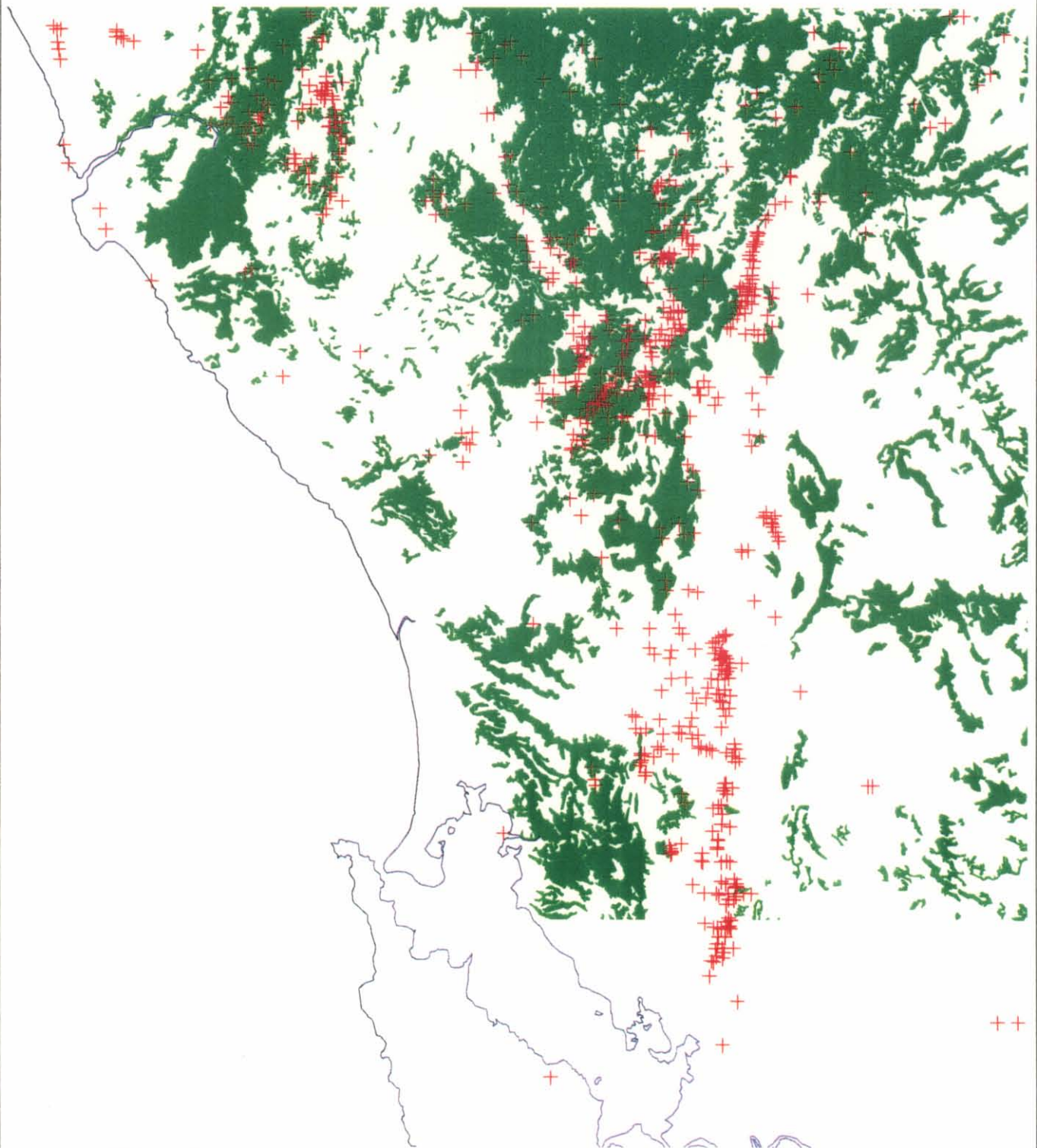


Figure 2

Reinforest data supplied courtesy of the Forestry Commission.

6/32

**TABLE 1**  
MIRLOCH data points in rainforest, western Tasmania

Reference No.	Name	Major Commodities	AMG Co-ordinates (m)		Map Sheet	Status
			Easting	Northing		
SHEET 7815 — SANDY CAPE						
26003	Salmon River Road Q	Cr	320,600	5,453,700	7815-1	8
26004	Chromite Spur	Cr	321,100	5,452,900	7815-1	8
26005	Section Kl	Cr	319,300	5,452,400	7815-1	8
26024	Gurr & Herrings	Cu	322,900	5,433,900	7815-1	6
34024	Unnamed	Cu	327,200	5,420,700	7815-2	6
34031	Poseidon	Cu	328,500	5,414,500	7815-2	6
SHEET 7913 — CAPE SORELL						
57015	Starting Creek	Pb	371,620	5,333,260	7913-1	6
SHEET 7914 — PIEMAN						
43135	South Bischoff A	Sn	370,800	5,403,800	7914-1	8
43137	Palmers Alluvial	Sn	371,200	5,402,700	7914-1	8
43132	Mt Youngbuck	W	357,000	5,402,200	7914-1	6
43136	South Bischoff B	Sn	371,100	5,402,000	7914-1	4
43147	Unnamed	Sn	362,100	5,401,300	7914-1	8
43150	Unnamed	Sn	361,200	5,397,700	7914-1	8
43166	Unnamed	Sn, Os, Ir	364,500	5,397,000	7914-1	8
43003	Betts Creek A	Sn	364,000	5,396,700	7914-1	6
43148	Unnamed	Sn	370,800	5,396,700	7914-1	8
43167	Betts Creek B	Sn, Os, Ir	365,500	5,395,700	7914-1	8
43145	Keegan	Sn, Os, Ir	363,000	5,395,500	7914-1	8
43149	Unnamed	Sn	367,400	5,393,700	7914-1	8
43140	Laurel Creek East	Sn, Fe	369,700	5,392,600	7914-1	6
43074	Wilson River B	Os, Ir, Au	364,500	5,387,000	7914-1	8
43032	Keenan Creek	Os, Ir, Au	364,000	5,386,900	7914-1	6
43155	Unnamed	Sn	357,700	5,384,900	7914-1	8
43165	Wilson River C	Os, Ir, Au	364,300	5,384,400	7914-1	8
43154	Unnamed	Sn	357,700	5,383,900	7914-1	8
43072	Wilson River A	Os, Ir, Au	365,000	5,383,800	7914-1	8
43030	Harmen River	Os, Ir, Au	363,000	5,383,700	7914-1	8
43152	Castles Creek	Sn	357,700	5,383,300	7914-1	8
43141	Mt Lindsay	Sn	360,500	5,382,700	7914-1	4
43034	Limestone Creek	Os, Ir, Au	365,600	5,382,600	7914-1	8
43142	Stanley Reward	Sn, Pb, Zn	358,800	5,382,200	7914-1	4
43029	Gould Creek	Os, Ir, Au	365,000	5,379,800	7914-1	8
43040	Merton Creek	Os, Ir, Au	368,000	5,379,800	7914-1	8
43110	Sweeney Creek	Os, Ir, Au	368,600	5,379,800	7914-1	8
43062	Tin Creek	Os, Ir, Au	369,500	5,379,200	7914-1	8
43001	Barnes Creek	Au	370,000	5,377,900	7914-1	8
43049	Roberts Creek—Biscuit Creek	Os, Ir, Au	366,000	5,377,700	7914-1	9
43162	Bealey Creek	Os, Ir, Au	369,700	5,377,400	7914-1	8
43160	King Creek	Os, Ir, Au	370,100	5,377,400	7914-1	8
50013	Huskisson River	Au	366,500	5,373,000	7914-2	8
50008	Crimson Creek	Au	365,500	5,372,500	7914-2	8
50077	Exe Proprietary	Sn	373,180	5,371,650	7914-2	4
50012	Star Creek	Sn	371,500	5,371,100	7914-2	8
50074	Keys' Section	Pb, Ag	371,350	5,370,950	7914-2	6
50081	Athenic Mine	Sn	374,770	5,370,880	7914-2	6
50105	Unnamed	Sn	374,650	5,369,920	7914-2	4
50084	Lynton Mine	Pb, Ba	374,300	5,369,600	7914-2	6
50106	Unnamed	Sn	374,350	5,369,400	7914-2	7
50028	Curtains Discovery	Bi, Ag, Au	374,000	5,368,500	7914-2	6
50099	Godkin Prospect	Sn	372,450	5,367,850	7914-2	6
50039	Greens Prospect	Sn	372,430	5,366,820	7914-2	6
50067	New Palace Mine	Ag, Cu, Sb	375,460	5,366,790	7914-2	4
50040	Fraser	As, Sn, Cu	372,430	5,366,550	7914-2	4
50056	South West Curtin Davis	Cu, Ag, Sb, Bi	372,680	5,366,300	7914-2	4
50061	Hecla Mine	Cu, Bi, Ag, As	371,960	5,366,230	7914-2	4
50055	Block 291 Mine (Higgins Lease 48M/48)	Pb, Ag, Sb	373,880	5,366,130	7914-2	4

Reference No.	Name	Major Commodities	AMG Co-ordinates (m)		Map Sheet	Status
			Easting	Northing		
50101	South Curtin Davis	Ag, Zn, Pb	372,510	5,365,930	7914-2	4
50033	Curtin Davis Consols	Ag, As, Zn	372,890	5,365,900	7914-2	6
50034	No.1 Curtin Davis	Ag, Cu, Pb	372,890	5,365,900	7914-2	6
50087	Evenden Mine	Pb, Zn, Ag	372,290	5,365,540	7914-2	4
50051	Great Northern Creek (Carbine Prospect)	Pb, Ag, Zn, Sb	371,390	5,365,380	7914-2	4
50098	Grand Prize Mine	Sn	368,400	5,365,340	7914-2	4
50053	Ramsdale Prospect	Pb, Ag, As	372,190	5,365,300	7914-2	4
50052	Tramway Prospect (Lower Ramsdale)	Pb, Zn, Ag, As	372,020	5,365,280	7914-2	6
50063	Unnamed	Pyrite	372,050	5,365,270	7914-2	7
50054	Sawmill (Scout Hut) Wallace West Prospect	Pb, Zn, Ag	372,610	5,365,240	7914-2	4
50038	Curtin Davis Extended	Ag, Cu, Pb	373,120	5,365,200	7914-2	6
50102	Unnamed	Pb, Zn, Ag	371,670	5,365,150	7914-2	7
50032	Wallaces Prospect; Higgins Prospect	Pb, Cu, Ag, Sn	372,900	5,365,040	7914-2	4
50091	Unnamed	Zn, Pb, Ag	371,250	5,364,760	7914-2	7
50092	Unnamed	Zn, Pb, Ag	371,125	5,364,700	7914-2	7
50090	Unnamed	Ag, Pb	371,750	5,364,370	7914-2	7
50093	Unnamed	Zn	371,130	5,364,120	7914-2	7
50064	Montezuma North Prospect	Pb, Ag, Sn, Au	373,050	5,363,980	7914-2	6
50023	Comstock	Pb, Ag, Zn	357,350	5,360,700	7914-2	4
50066	Coleman's Mistake	Pb, Zn	371,800	5,357,300	7914-2	7
50002	Howards Road Prospect	Au	374,000	5,355,000	7914-2	6
50009	Farrell Rivulet Deep Lead	Au	366,360	5,354,740	7914-2	8
43124	Unnamed	Os, Ir, Au	347,800	5,404,050	7914-4	8
43047	Obsidian Creek; Smiths	Au	350,000	5,403,250	7914-4	8
43026	Frenchman's East Tunnel	Au	350,220	5,403,170	7914-4	4
43038	Main Rivulet A	Au	349,000	5,402,500	7914-4	8
43021	Dozer Track Prospect	Au	348,200	5,402,000	7914-4	6
43058	Talking Adit	Au	349,600	5,401,990	7914-4	4
43023	False Cox's Face	Au	349,590	5,401,970	7914-4	4
43018	Davis' Tunnel/adit	Au	349,620	5,401,960	7914-4	4
43005	Big Duffer Creek	Au	349,000	5,401,900	7914-4	8
43122	Unnamed	Ma	346,600	5,399,500	7914-4	6
43123	Unnamed	Ma	346,950	5,399,200	7914-4	6
43085	Pistol Range Prospect	Au, Ag	348,050	5,397,600	7914-4	6
43121	Unnamed	Au, Os, Ir	344,500	5,396,600	7914-4	8
43080	P18	Au	341,540	5,394,600	7914-4	6
43053	Sabbath Creek; Sunday Creek	Au	340,000	5,393,700	7914-4	8
43078	L27	Au	343,200	5,393,600	7914-4	6
43081	X6 (p7)	Au	343,750	5,393,420	7914-4	6
43010	Cape Copper	Cu	349,700	5,393,400	7914-4	4
43079	P12	Au	342,200	5,392,200	7914-4	6
43046	New Donaldson	Au	339,900	5,391,600	7914-4	6
43119	Unnamed	Sif	343,200	5,391,400	7914-4	0
43126	Unnamed	Fe, Mag	349,000	5,391,000	7914-4	6
43056	Savage River (South)/Nonesuch Creek	Au	339,600	5,390,300	7914-4	6
43094	Donaldson Landing	Au	338,100	5,389,800	7914-4	6
43087	Middleton Creek North	Au	341,500	5,389,800	7914-4	8
43007	Brooklyn	Au	339,300	5,389,700	7914-4	8
43055	Savage River (South); Nonesuch Creek	Au	340,100	5,389,700	7914-4	6
43059	Tarrys	Au	348,600	5,389,600	7914-4	8
43031	Jansen Creek	Au	342,600	5,389,550	7914-4	8
43050	Rocky River Alluvial	Au	349,000	5,389,500	7914-4	8
43041	Middleton Creek (C)	Au	341,200	5,389,450	7914-4	8
43111	Unnamed	Au	349,500	5,388,900	7914-4	8
43083	Assoc. Rocky River	Cu	349,435	5,388,890	7914-4	6
43086	Middleton Creek South	Au	340,900	5,388,800	7914-4	8
43064	Whyte Creek; White Creek	Au	341,400	5,388,000	7914-4	8
43088	Jansens Big Face	Au	341,800	5,387,800	7914-4	6
43106	Lucy Creek B	Au	347,000	5,386,700	7914-4	8
43066	Unnamed	Au, Fe	349,400	5,386,600	7914-4	6
43028	Frenchmans Peak; West Workings	Au	344,650	5,386,300	7914-4	8
43035	Lucy Creek Workings A	Au	346,550	5,386,000	7914-4	4

9/32

Reference No.	Name	Major Commodities	AMG Co-ordinates (m)		Map Sheet	Status
			Easting	Northing		
43113	Unnamed	Au	348,800	5,385,400	7914-4	6
43116	Alpine A	Cu, Fe	341,200	5,376,700	7914-4	6
<b>SHEET 7915 — ARTHUR RIVER</b>						
27028	Menna Trig	Si	371,000	5,454,000	7915-1	6
27024	Cann Creek	Mag	369,500	5,447,000	7915-1	6
27008	Lyons River	Au	365,600	5,446,000	7915-1	8
27013	Unnamed	Au	365,250	5,444,620	7915-1	6
27012	Unnamed	Au	364,100	5,444,190	7915-1	6
27006	Folly Hill (Fury Hill)	Au	363,900	5,443,900	7915-1	4
27001	Arthur River	Au	367,250	5,442,020	7915-1	8
27002	Blue Peak	Cu	362,500	5,441,000	7915-1	6
27023	Arthur River Magnesite	Ms	370,500	5,440,800	7915-1	6
27010	Victory Copper Mine; New Victory	Cu	370,200	5,440,600	7915-1	4
27027	Keith River Magnesite	Ms	369,000	5,439,000	7915-1	6
27030	Lyons River B	Cu	366,000	5,436,000	7915-1	6
27029	Lyons River A	Mag	366,000	5,435,000	7915-1	6
27021	Lyons River Magnesite #2	Ms	366,000	5,435,000	7915-1	6
27018	Atlas	Ag, Pb	372,120	5,433,380	7915-1	6
27022	Lyons River Magnesite #3	Ms	365,000	5,433,000	7915-1	6
35041	Fawkners	Ag, Pb	373,200	5,412,700	7915-2	4
35012	Burgess Prospect	Os, Ir	362,000	5,412,500	7915-2	6
35003	Matthews Creek	A,	371,100	5,411,500	7915-2	8
35063	Campbell's No.2 Lode	Sn	372,400	5,407,500	7915-2	6
35033	Cleveland	Sn	365,200	5,406,700	7915-2	3
35059	Washington	Ag	363,900	5,406,200	7915-2	6
35065	Cundy's Lode	Sn	372,800	5,405,900	7915-2	6
35008	New Jasper	Cu	359,200	5,405,200	7915-2	6
35067	Wombat	Sn	373,300	5,404,800	7915-2	6
35001	Davis Creek	Cu	351,470	5,412,240	7915-3	6
27005	Comstaff Creek	Au	352,800	5,417,800	7915-3	7
35006	Specimen Creek	Au	351,500	5,411,000	7915-3	8
35004	Mcphees Adits	Au	351,200	5,410,800	7915-3	4
35002	Hall Creek	Au	350,700	5,410,600	7915-3	8
27014	Roger River Dolomite	Dol	333,500	5,452,300	7915-4	2
<b>SHEET 7916 — CIRCULAR HEAD</b>						
21019	Nye Silica	Si	369,400	5,446,500	7916-2	6
<b>SHEET 8013 — FRANKLIN</b>						
58293		Au	379,600	5,330,900	8013-4	4
58226	Harris Reward	Au	379,860	5,330,140	8013-4	4
<b>SHEET 8014 — SOPHIA</b>						
44317	Mayday Creek	Au	403,100	5,399,280	8014-1	7
44332	Heap Of Rocks/Fleece Creek	Pb, Zn	405,600	5,393,300	8014-1	6
51159	Mt Black	Py	381,420	5,376,000	8014-3	9
51326	Scotts Application	Au, Ag, Cu	378,500	5,375,300	8014-3	6
51315	Maddens Section	Cu	387,270	5,374,640	8014-3	6
51150	Sterling Valley Sn	Sn	384,280	5,374,200	8014-3	4
51082	Glenfine Mine	Py	376,200	5,371,200	8014-3	4
51083	South Glenfine	Py	376,200	5,370,900	8014-3	4
51279	Unnamed	Pb	378,510	5,367,890	8014-3	6
51134	W. Redman's Section 6825M	Pb	377,130	5,367,670	8014-3	6
51278	Jones Creek Prospect	Pb	378,090	5,364,400	8014-3	6
51153	White Spur	Py	376,350	5,362,480	8014-3	6
51105	Mt Selina	Ag	386,400	5,362,400	8014-3	6
51110	Howard's Anomaly	Ag	380,950	5,357,660	8014-3	6
51111	Henty River Adits	Pb	377,600	5,354,300	8014-3	4
51151	Leech Hill	Py	379,750	5,353,700	8014-3	4
51112	Henty Gorge Adit	Cu	377,800	5,353,400	8014-3	6
51114	Unnamed	Au	378,100	5,349,700	8014-3	6

Reference No.	Name	Major Commodities	AMG Co-ordinates (m)		Map Sheet	Status
			Easting	Northing		
44032	Zoned	Py	392,570	5,395,390	8014-4	6
44035	Switchback	Py	392,920	5,394,600	8014-4	9
44004	Goldhill	Au	391,600	5,394,200	8014-4	6
44335	Sock Creek South	Zn, Pb, Ag	385,100	5,391,450	8014-4	6
44007	Mt Charter	Ba	389,490	5,391,350	8014-4	6
44008	Mt Charter Barite	Ba	389,650	5,391,300	8014-4	6
44009	Unnamed	Pb	376,750	5,389,500	8014-4	6
44010	Silver Falls	Pb, Ag	376,800	5,389,350	8014-4	6
44011	Lynch Creek Prospect	Pb	375,630	5,387,430	8014-4	6
44012	North Pinnacles	Pb	378,980	5,387,100	8014-4	6
44018	White Hawk Mine	Pb	391,650	5,383,700	8014-4	6
44025	Samuel Smiths Lode	Py	380,900	5,383,150	8014-4	6
44023	Section 1893-93M	Py	377,600	5,382,800	8014-4	6
44024	Section 1894-93M	Py	378,050	5,382,600	8014-4	6
44273	63.5 Mile Creek	Fe	379,800	5,381,700	8014-4	6
44027	Unnamed	Py	377,970	5,380,450	8014-4	6
44028	Section 3711 & 3712	Pb	376,900	5,380,400	8014-4	6
44029	Mt Kershaw	Zn	377,070	5,380,300	8014-4	6
44315	Granite Tor	Sn	395,700	5,380,300	8014-4	7
44271	Unnamed	Cu	376,800	5,377,900	8014-4	6
58260	Gold Creek	Au	378,170	5,348,830	8013-4	6
<b>SHEET 8015 — HELLYER</b>						
28018	Preolenna – 8 Mile	Coal	376,200	5,443,600	8015-4	4
28031	Unnamed	Oil Shale	375,800	5,442,900	8015-4	6
28009	Kays Old Diggings (Lawries)	Au	375,400	5,436,300	8015-4	8

#### KEY TO TABLE

<b>Reference No.:</b>	Refers to reference on Mineral Resources Tasmania MIRLOCH database.		<b>Map Sheet:</b>	Tasmap 1:100 000 series	
<b>Name:</b>	Refers to name of MIRLOCH data point		<b>Status:</b>	0 = operating mine	
<b>Major Commodities:</b>	Mostly identified by chemical symbols			1 = Non-operating mine, reserves known	
				2 = Non-operating mine, reserves unknown	
				3 = Abandoned mine, reserves known	
				4 = Abandoned mine, reserves unknown	
				5 = Abandoned mine, mined out	
				6 = Prospect – explored	
				7 = prospect – unexplored	
				8 = Mineralised area	
				9 = Mineral occurrence	
Cr	chromium	Bi	bismuth		
Cu	copper	Zn	zinc		
Pb	lead	Sb	stibnite		
Sn	tin	As	arsenopyrite		
W	tungsten	Ag	silver		
Os, Ir	osmiridium	Mag	magnesite		
Si	silica	Dol	dolomite		
Au	gold	Py	pyrite		
Ba	barium				



# SITE REPORTS

This section presents site descriptions and recommendations for the fourteen sites chosen for this inventory. Individual location maps are also provided. All except two sites are located on the West Coast of Tasmania. The remaining two are located in the north near the Black Bluff Range, and Blue Tier in the northeastern highlands.

The sites chosen are a representative sample of hundreds of similar examples which can be found throughout the State, and include:

- old mine sites, now consumed by encroaching forest
- a new mine (on the site of older workings)
- old exploration sites, unrehabilitated
- newer exploration sites at which some rehabilitation has been done

In some cases the site reports include recommendations for rehabilitation work. Should funds for such work be forthcoming and the works done, this will not prevent future access for exploration or mining purposes.

Modern exploration is carried out in the knowledge that full and costly rehabilitation and revegetation are part of the program. This was not required in years gone by, and as a result there are many examples of mining and exploration practices which fall short of the standards expected today.

## BLUE TIER

### Location:

Blue Tier is the name given to a plateau north of the old townships of Lottah and Poimena (see fig. 3, 4, 5).

### Municipality:

Break of Day.

### Map Reference:

Tasmap 1:100 000 series. Sheet 8515 (-4) — Georges Bay. Grid reference EQ850390.

### Land Status:

State Forest, Multiple Use Forest Land and Blue Tier RAP (Recommended Area for Protection).

### National Estate:

Within Blue Tier Australian Heritage Commission Act nomination.

### Economic Minerals:

Tin.

### Access:

From Lottah, along Poimena Road; from Weldborough along Emu Road then Frome Road (see fig. 3, 4, 5).

### Visibility of site:

Low; old mine sites overgrown by tea-tree scrub, grasses and moss.

### Description of site:

The area has been extensively prospected and explored, resulting in many small old mine sites and heavy disturbance. Most of the mine sites were previously rainforested areas, however regeneration has been limited. Many tracks provide 4WD access through much of the area, some of which are suffering from severe erosion.

### Dimensions:

Most of the individual mine sites are less than one hectare in size. The total area under investigation equals about 4000 hectares.

### Geology:

Various forms of Devonian granite (Geological Atlas 1:50 000 Series. Sheet 33. Blue Tier).

### Vegetation type:

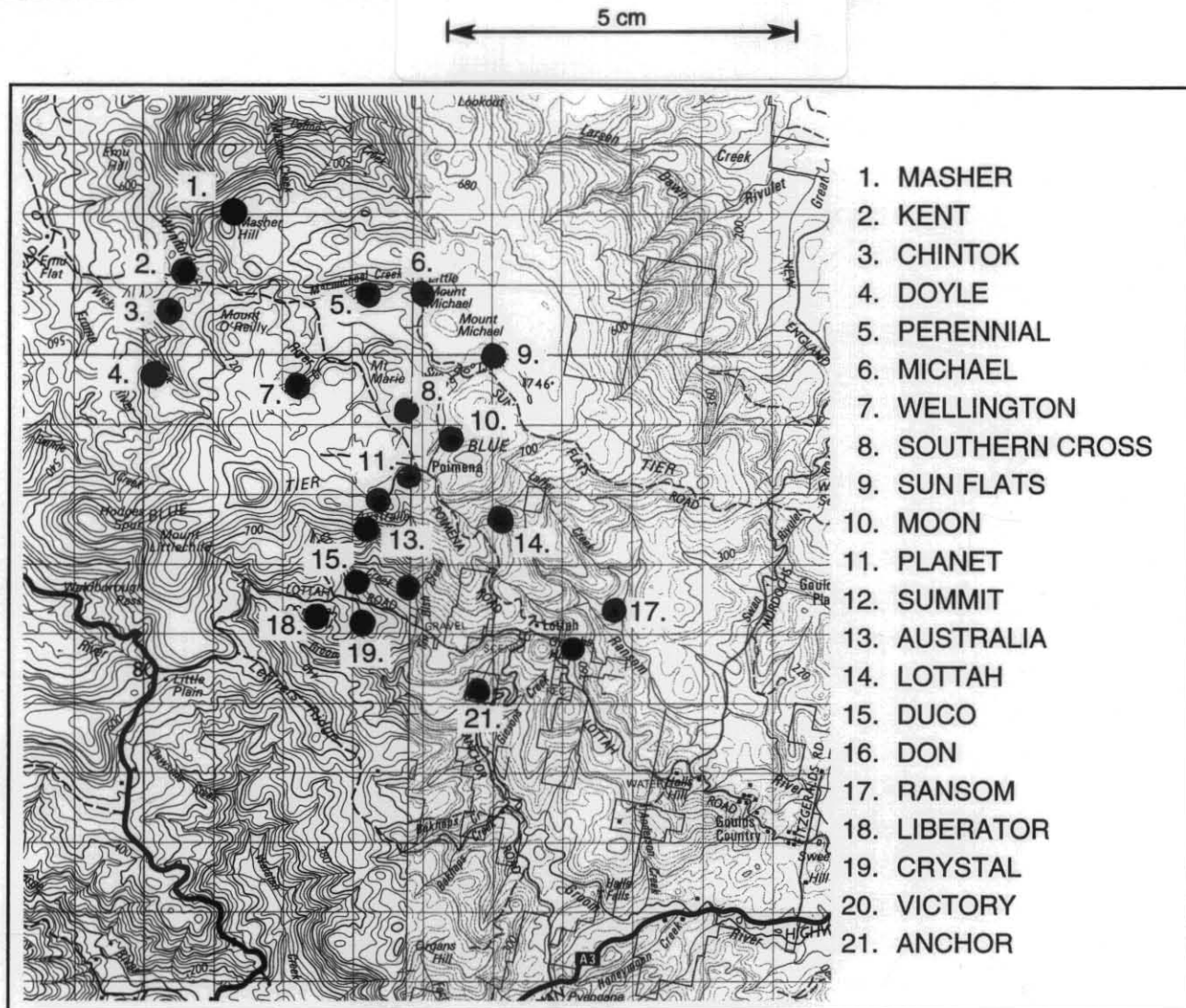
Before human disturbance, callidendrous/thamnic rainforest was the predominant vegetation type on the Tier (Lynch, 1992). However, past clearing for mining activities, human settlements, firewood collection and grazing has significantly altered the landscape. Open grasslands and tea-tree scrub are now the dominant vegetation communities, with limited rainforest regrowth. The grassland communities have persisted because of heavy grazing by marsupial species, the harsh alpine environment of the northeast highlands, and the sheep and cattle grazing which occurred until recently.

The grasslands form an unusual community type classified as tussock grassland or '*Nothofagus cunninghamii* - *Oreomyrrhis* grassy shrubland' in Kirkpatrick and Duncan (1987). According to Kirkpatrick *et al.* (1988), Blue Tier is the stronghold of this community. Although the present-day extent of this community has resulted from the burning of rainforest, Kirkpatrick and Duncan (1987) reported that "some of the grassland predates European settlement", but occupied a more limited range at that time.

Blue Tier also possesses some excellent examples of an unreserved northeastern tussock-*Sphagnum* mire plant community. Similarly, these mires developed after the burning of the rainforest in the area (Whinam *et al.* 1989).

### Historical Significance:

The area is of considerable historic importance. Tin mining on Blue Tier began in 1874 and has continued intermittently until the last decade, leaving behind an area rich in mining heritage. According to Gaughwin (1991) the area was found to be "highly significant as a well preserved and easily visible cultural landscape". The area contains an unusually high density and variety of historic sites, including the remains of the former township of Poimena; alluvial mining areas; open-cut mines; shaft mines; and associated tramways and tracks.



**Figure 3**  
Location of mine sites, Blue Tier

### Mining Heritage:

The area is of considerable interest to visitors interested in mining heritage. Maps showing walks which take in some of the most interesting areas can be purchased from the St Helens History Room. Artefacts of heritage significance include several stampers and stamper remains, such as the Moon, Cambria, Cambria West and Anchor batteries; various mine buildings and cottage remains; a boiler near the Moon battery; a pelton wheel and jaw crusher with the Cambria battery; and until recently the remains of an overshot waterwheel and 12-head stamper on the old Chintock prospect.

A "Mudies crusher with Cootes Improvements" has been removed a distance from (still visible) foundations at the Perennial mine. An adit (Bartholomew Griffin's tunnel) can be seen. Numerous traces of generations of mining, such as pieces of pipe, flumes, sluices, shovels and pieces of machinery, litter the Tier. Kilometres of hand-dug races can be traced.

Despite the regrowth, physical evidence of mining can still be found. A sizeable open cut exists at the Mt Michael mine, and in other places (notably near the Cambria mine) sluiced faces can still be found. Modern workings and a treatment plant also exist at the Anchor mine.

### Recommendations:

The large area of disturbed rainforest on Blue Tier has the potential to provide many opportunities for rehabilitation. However the area is still prospective for tin, and rights of access for mineral exploration and mining need to be maintained. A proposed archaeological study of the Blue Tier needs to be completed before any large-scale rehabilitation projects can be considered. Funded by the Australian Heritage Commission, and co-ordinated by the Forestry Commission, the project will produce a comprehensive report on the mining heritage of the area, assess its overall significance, and make recommendations for future management.

The natural conservation values of the grassland and *Sphagnum* communities also conflict with rainforest regeneration on Blue Tier. Although these communities developed after human disturbance, a management decision needs to be made to determine whether their conservation significance is higher than that of rainforest in this region, prior to any rainforest revegetation projects proceeding in either of these communities.

In the meantime, small-scale projects could involve the rehabilitation of unnecessary, actively-eroding roads and disused gravel pits located away from areas of archaeological and ecological significance.

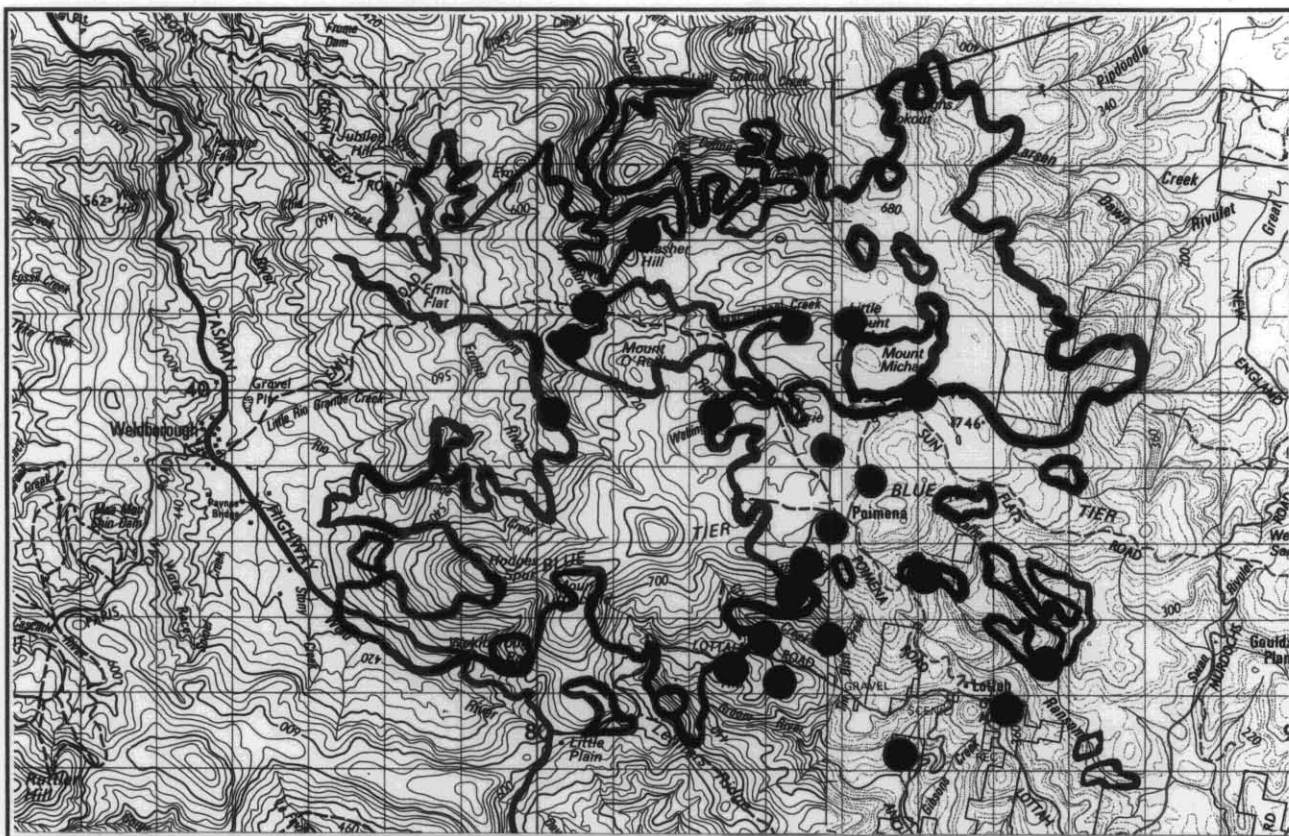


Figure 4

Blue Tier mine sites and rainforest distribution

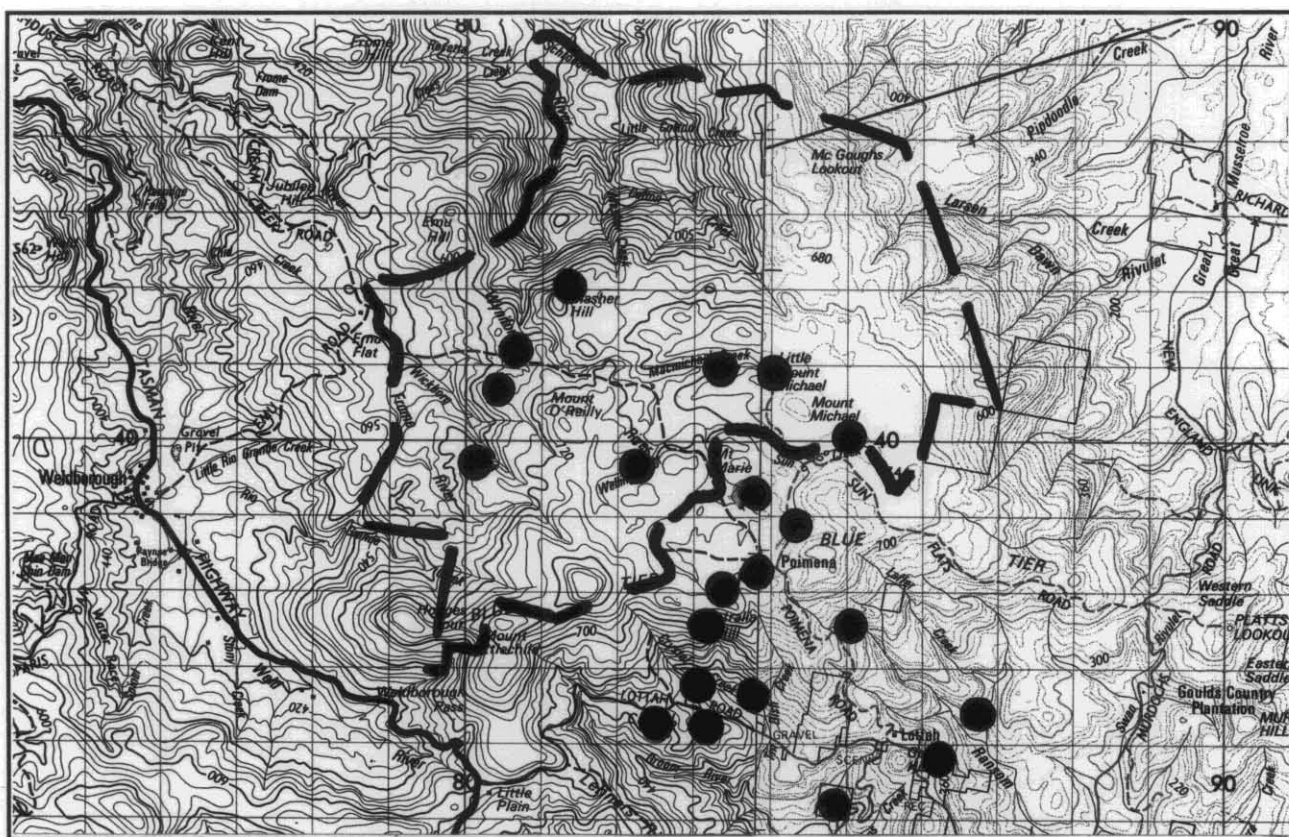


Figure 5

Blue Tier mine sites and Recommended Area for Protection



## SWEENEY'S (BIRTHDAY) MINE

### Location:

Pikes Creek, on the southern slopes of Mount Agnew (see fig. 6, 7).

### Municipality:

West Coast.

### Map Reference:

Tasmap 1:100 000 series. Sheet 7914 (-3) — Pieman.  
Grid reference CP518588.

### Land Status:

State Forest, Multiple Use Forest Land.

### National Estate:

None.

### Economic Minerals:

Tin — alluvial and hardrock.

### Access:

An exploration track leads north from Trial Harbour Road to the mine. Access is by foot only, as the track is not suitable for vehicular traffic.

### Visibility of site:

Low.

### Description of site:

Mine site is overgrown. Access track has eroded in places, but these spots are not located in rainforest.

### Dimensions:

Mine site covers an area of more than one hectare in rainforest. The last few hundred metres of the track are in rainforest.

### Geology:

Upper Devonian granite (Geological Atlas One Mile Series. Sheet 50. Zeehan).

### Vegetation type:

Mature myrtle rainforest and mature eucalypt regrowth.

### Historical Significance:

The mine was initially worked in the 1920s. The ore from the mine was crushed by a five-stamp battery, powered by a Pelton wheel, in Pikes Creek. The mine was one of many similar small operations around Mount Agnew. Ore has been won from one shallow bench and a number of prospecting adits. The entrance to one adit can be seen near the end of the bulldozed track. The access track was put in by a bulldozer in 1977 and extended in 1981.

### Relics:

A number of small adits, mullock heaps, scattered artifacts and drill pads off the track.

### Recommendations:

No rehabilitation of the mine site is required as it is largely overgrown.

## GLOBE MINE

### Location:

Agnew Creek on the slopes of Mount Agnew (see fig. 6, 7).

### Municipality:

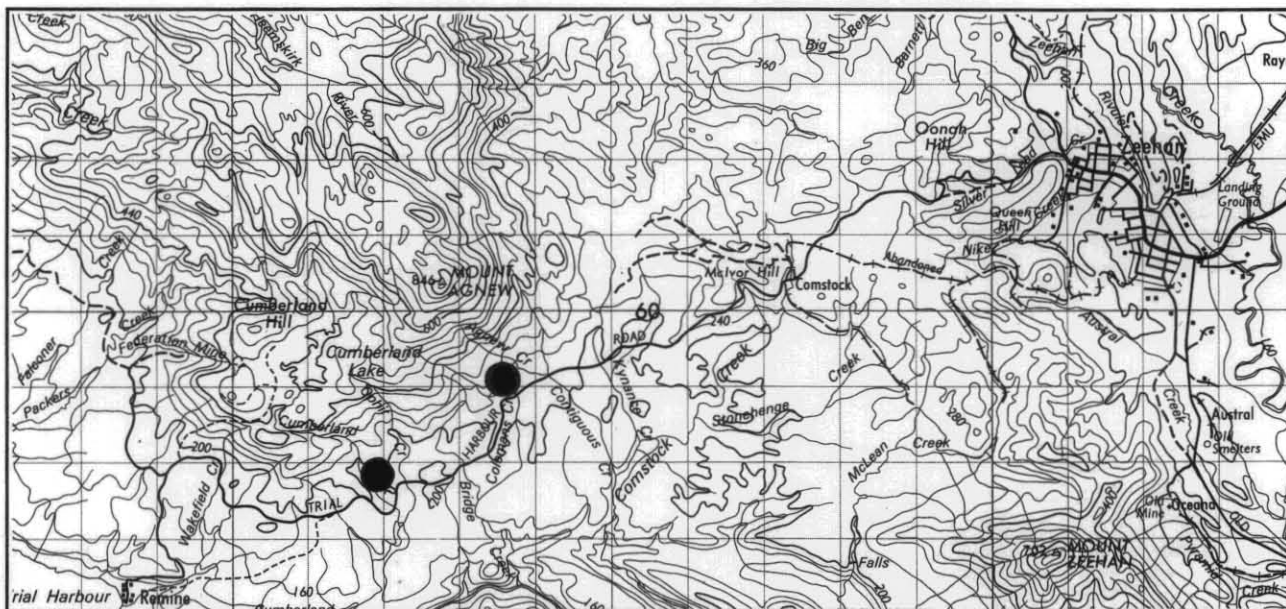
West Coast.

### Map Reference:

Tasmap 1:100 000 series. Sheet 7914 (-3) — Pieman.  
Grid reference CP535594.

### Land Status:

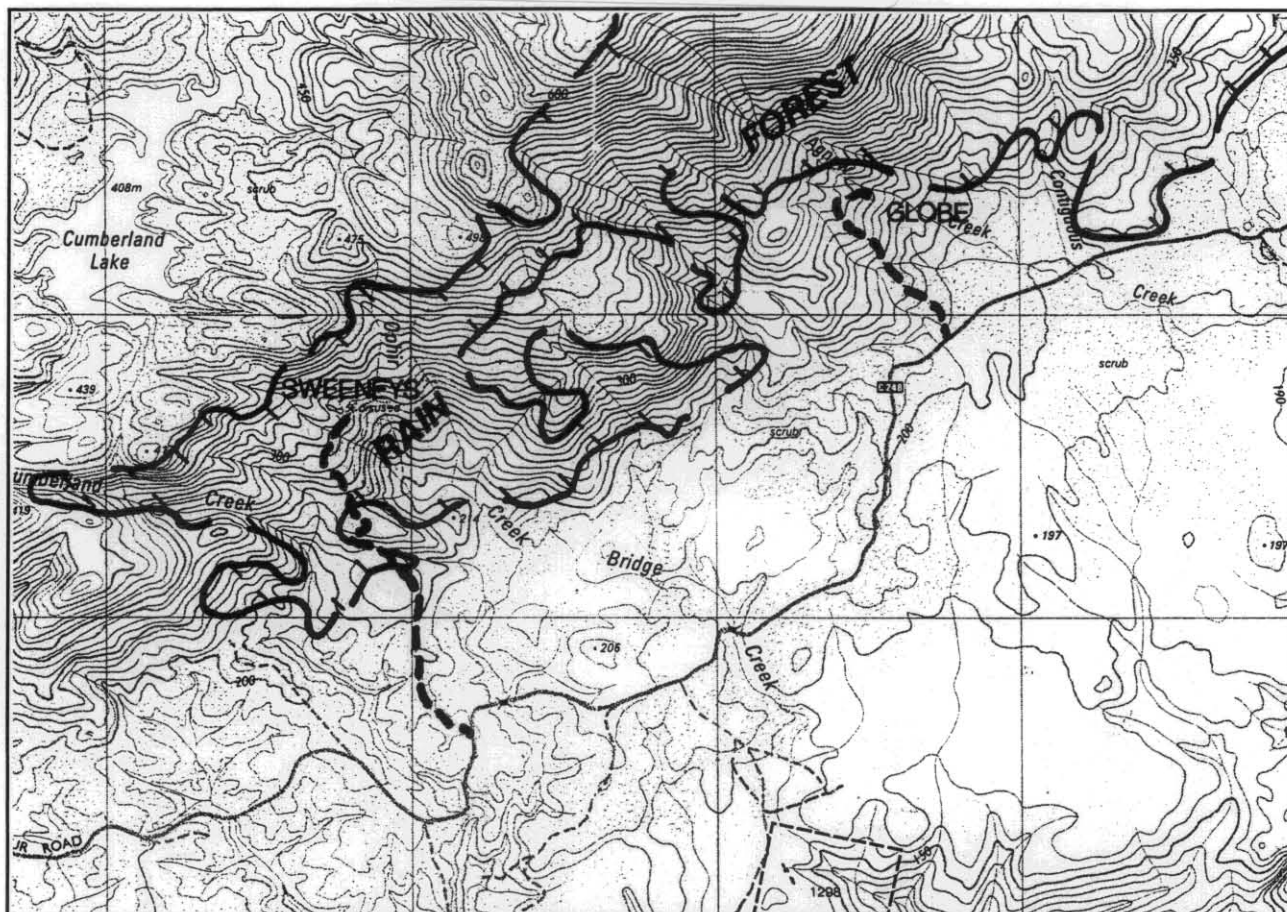
State Forest, Multiple Use Forest Land.



**Figure 6**  
Location of Sweeney's and Globe mines

5 cm

14/32



**Figure 7**

Rainforest cover, Sweeney's and Globe mines

**National Estate:**

None.

**Economic Minerals:**

Tin, silver, base metals, tourmaline.

**Access:**

An exploration track leads north from Trial Harbour Road to the mine (see fig. 7).

**Visibility of site:**

Part of the track can be seen from main road and other vantage points in the area.

**Description of site:**

The mine site is overgrown. The access track is suffering from massive erosion.

**Dimensions:**

Two kilometres of access track.

**Geology:**

Devonian granite (Geological Atlas One Mile Series. Sheet 50. Zeehan.).

**Vegetation type:**

Myrtle rainforest regrowth around old mine site.

**Historical Significance:**

The mine was initially worked in the 1920s and was one of many similar operations around Mt Agnew.

**Relics:**

None noted.

**Recommendations:**

Mine site has naturally revegetated adequately. Access track could be rehabilitated, however most of this track is not in rainforest.



$$\frac{15}{32}$$

Tulloch Creek (see fig. 8, 9).

## West Coast.

Tasmap 1:100 000 series. Sheet 7914 (-1) — Pieman.  
Grid reference CP610820.

State Forest; within Parsons Hood RAP.

Within Meredith Range Australian Heritage Commission  
Act nomination.

## Tin.

Tracks from Pieman Road leading north to Mt Lindsay mine and exploration drill sites (see fig. 9).

Not visible from Pieman Road.

Mining activity occurred around 1910. The mine site is now covered in regrowth. Narrow tracks and drill pads were put in during an intensive phase of exploration from the mid-1970s to the mid-1980s. The drill sites are now largely revegetated.

The mine site covers approximately one hectare.

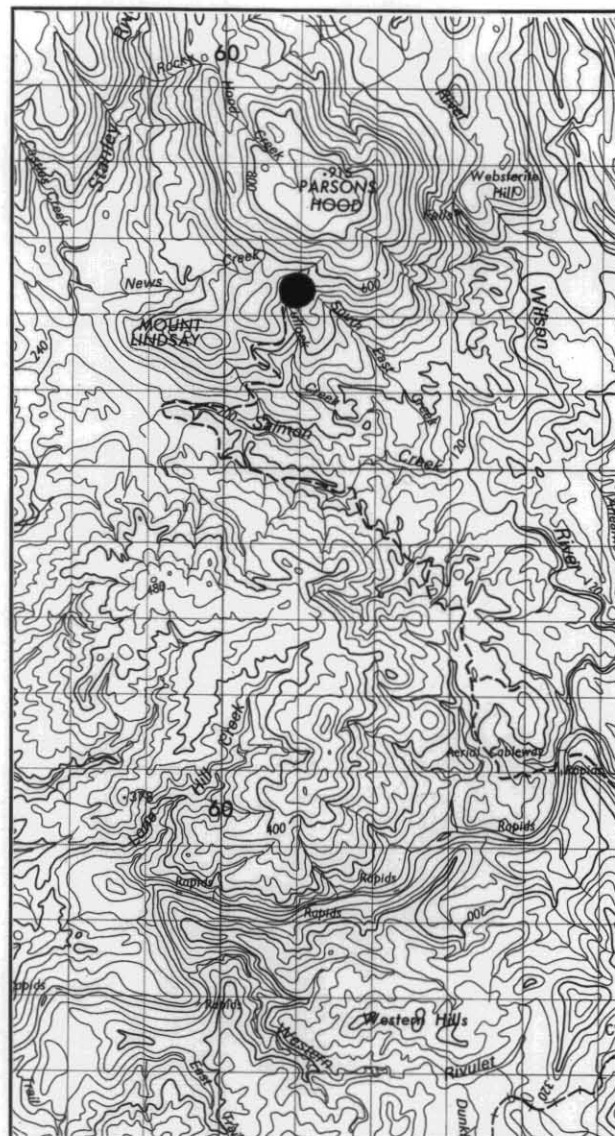
Mafic volcanoclastic lithicwacke, siltstone and mudstone of Cambrian age (Geological Atlas 1:50 000 Series. Sheet 43. Corinna.).

Small-crowned rainforest intermixed with some pockets of myrtle regrowth in disturbed areas.

Historic tin field. Many leases were held in this area in the early part of this century. A series of adits and costeans were dug by the Mount Lindsay Mining Company NL between 1910 and 1914. One of many similar small mines in this area and adjacent to the Stanley River tin field.

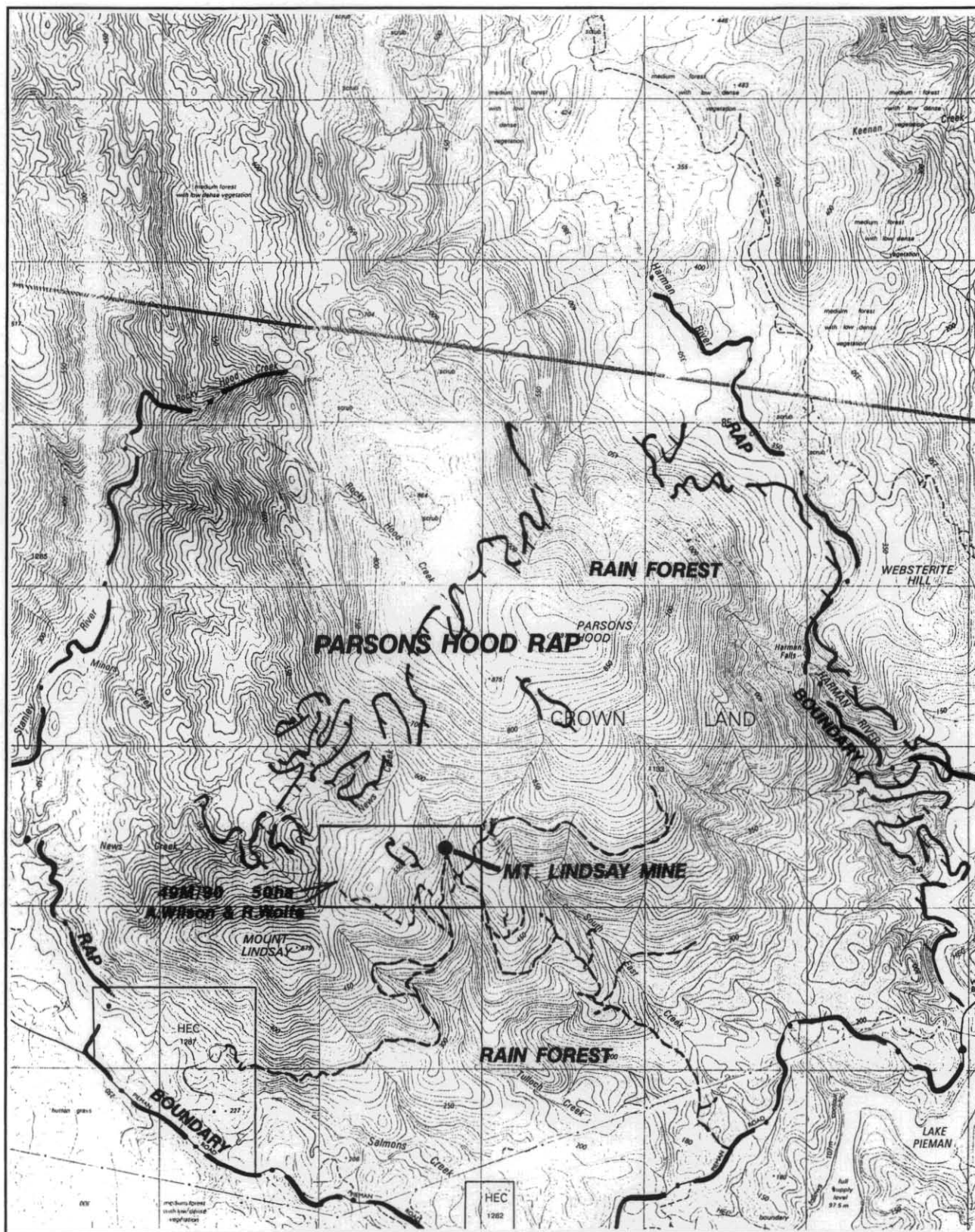
Mullock heaps (to be reprocessed by a current operation); entrances to adits; hand-dug costeans (approximately 1910).

The area is highly prospective; the track to the current mine is frequently used. Tracks should be maintained and drainage installed where required.



### Location of Mt Lindsay mine

5 cm



**Figure 9**  
Rainforest cover, Mt Lindsay mine

5 cm

## RINGVILLE TOWNSHIP

### **Location:**

Approximately four kilometres southeast of Renison Bell, near the Ring River (see fig. 10).

### **Municipality:**

West Coast.

### **Map Reference:**

Tasmap 1:100 000 series. Sheet 7914 (-2) — Pieman.  
Grid reference CP730680.

### **Land Status:**

Crown Land, Deferred Forest Land.

### **National Estate:**

None.

### **Economic Minerals:**

Prospective for base metals.

### **Access:**

Via 4WD track south of the Murchison Highway for approximately five kilometres. Can be accessed from the south by the North East Dundas Tramway track.

### **Visibility of site:**

Low.

### **Description of site:**

Former mining town. Site completely overgrown.

### **Dimensions:**

Less than one square kilometre.

### **Geology:**

Cambrian fossiliferous greywacke turbidite sequences (Geological Atlas One Mile Series. Sheet 50. Zeehan.).

### **Vegetation type:**

Predominantly large and small-crowned myrtle rainforest with celery-top pine and blackwood.

### **Historical Significance:**

Small township which grew following the discovery of gold in the Ring River in 1891; by 1896 the town boasted two hotels. The town was abandoned by 1910.

### **Relics:**

Not known

### **Recommendations:**

An archaeological survey should be made prior to any disturbance. Care should be taken if any earthmoving activities are proposed over the site.

## NORTH-EAST DUNDAS TRAMWAY

### **Location:**

East of the Murchison Highway, northeast of the town of Dundas (see fig. 10).

### **Municipality:**

West Coast.

### **Map Reference:**

Tasmap 1:100 000 series. Sheet 7914 (-2) — Pieman.  
Grid reference CP720670.

### **Land Status:**

Crown Land, Deferred Forest Land.

### **National Estate:**

On edge of Dundas-Henty Rainforest Australian Heritage Commission Act nomination.

### **Economic Minerals:**

Prospective for base metals.

### **Access:**

There are several points of access. A 4WD track runs from the Murchison Highway near Melba Flats to the west, while another runs from the east along the Montezuma Falls track at Williamsford (see fig. 10).

### **Visibility of site:**

Low.

### **Description of site:**

Former tramway, part of which is now a 4WD track used by many people for recreational purposes. Poor drainage is becoming a problem. A gate has been installed on the Montezuma Falls track near Williamsford to restrict vehicular access during the wetter winter months.

### **Dimensions:**

Approximately seven kilometres long.

### **Geology:**

The majority of the tramway's length is through volcanoclastic sediments and basic lavas of the Dundas Group (Geological Atlas One Mile Series. Sheet 50. Zeehan.).

### **Vegetation type:**

Two-thirds of the tramway travels through myrtle rainforest.

### **Historical Significance:**

Construction of the tramway started in 1896, reaching Montezuma and Williamsford stations in 1898. The tramway was one of many built on the West Coast.

### **Relics:**

Remnants of some of the bridges and the original cuttings can still be seen.

### **Recommendations:**

Access required for exploration and recreational purposes. Track should be maintained and repaired as needed, with particular attention to track drainage.



5 cm

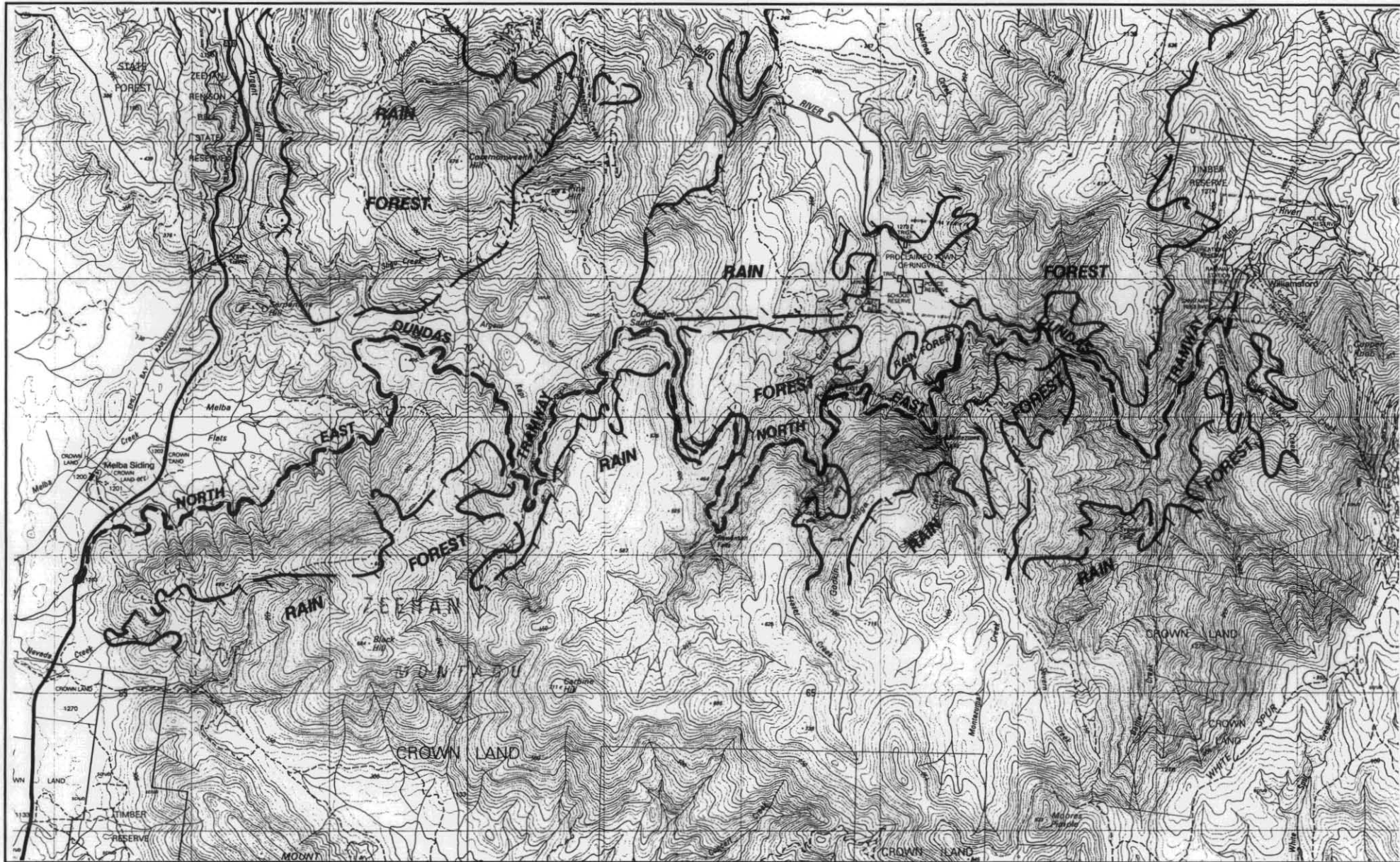


Figure 10. Location of Ringville township, North East Dundas Tramway, and rainforest cover.

## MAESTRIES NORTH (CONCERT CREEK)

### Location:

Near Dundas, on the western slopes of Moores Pimple (see fig. 11, 12).

### Municipality:

West Coast.

### Map Reference:

Tasmap 1:100 000 series. Sheet 7914 (-2) — Pieman.  
Grid reference CP735640.

### Land Status:

Crown Land, Deferred Forest Land.

### National Estate:

None.

### Economic Minerals:

Prospective for silver, lead, zinc and tin.

### Access:

From the Murchison Highway, east from the old Dundas township site along a 4WD track from the old Maestries station (see fig. 12).

### Visibility of site:

Visible from most vantage points in Dundas area.

### Description of site:

Exploration track and drill pads, including approximately one kilometre of rehabilitated track.

### Dimensions:

Approximately 1.5 kilometres of access track, 5–6 metres wide.

### Geology:

Dominantly Concert Schist with greywacke-conglomerate sequence to the east (Geological Atlas One Mile Series. Sheet 50. Zeehan.).

### Vegetation type:

Myrtle rainforest with some King Billy pine present.

### Historical Significance:

None. Recent exploration track and drill pads constructed in early 1980s. Partial track rehabilitation occurred in 1986–87.

### Relics:

None.

### Recommendations:

Main track still in use by exploration staff and Government agency staff and should remain open. Revegetation of rehabilitated section is slow. One application of fertiliser should be made (N:K:P = 6:5:5 at 250 kg/ha). Patches of gorse on the main track should be sprayed and removed by hand.

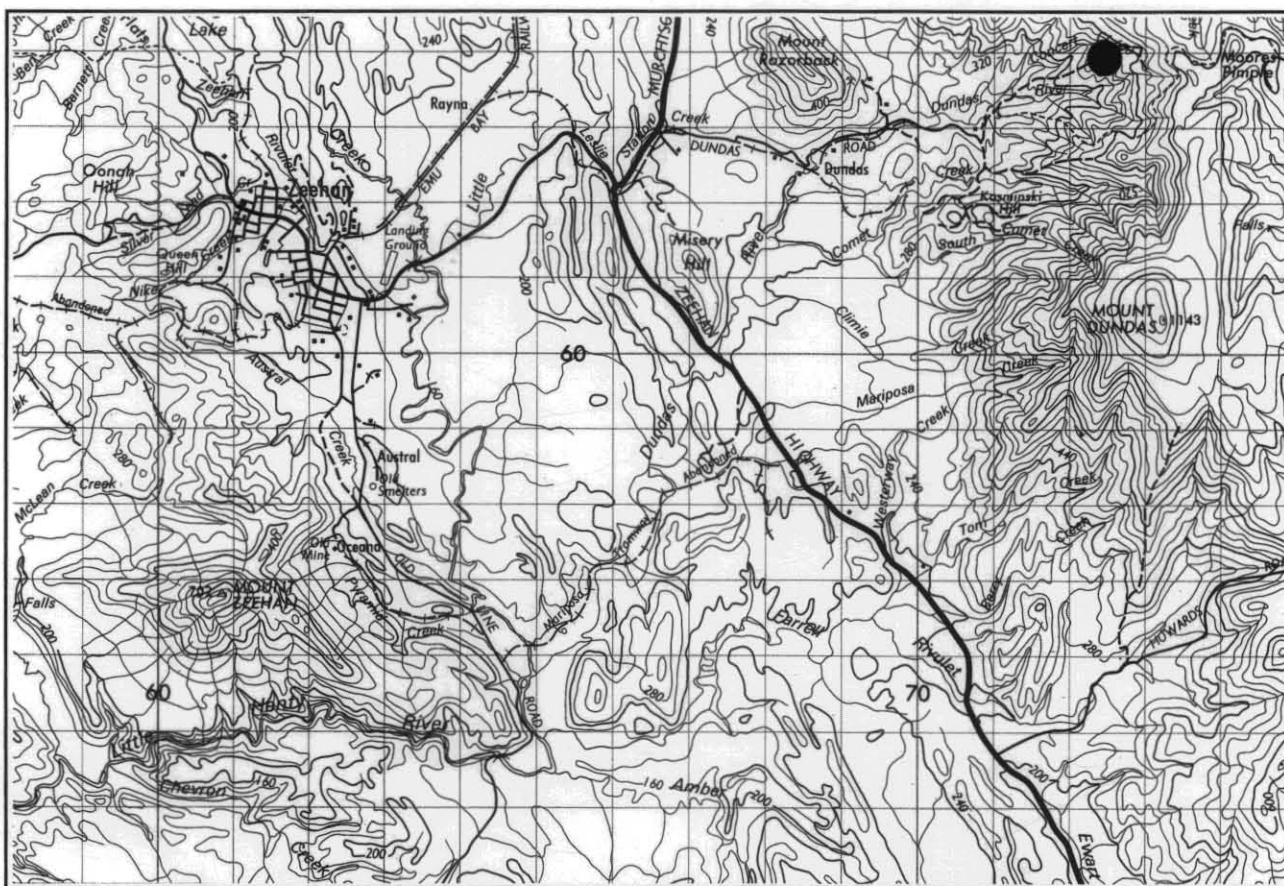
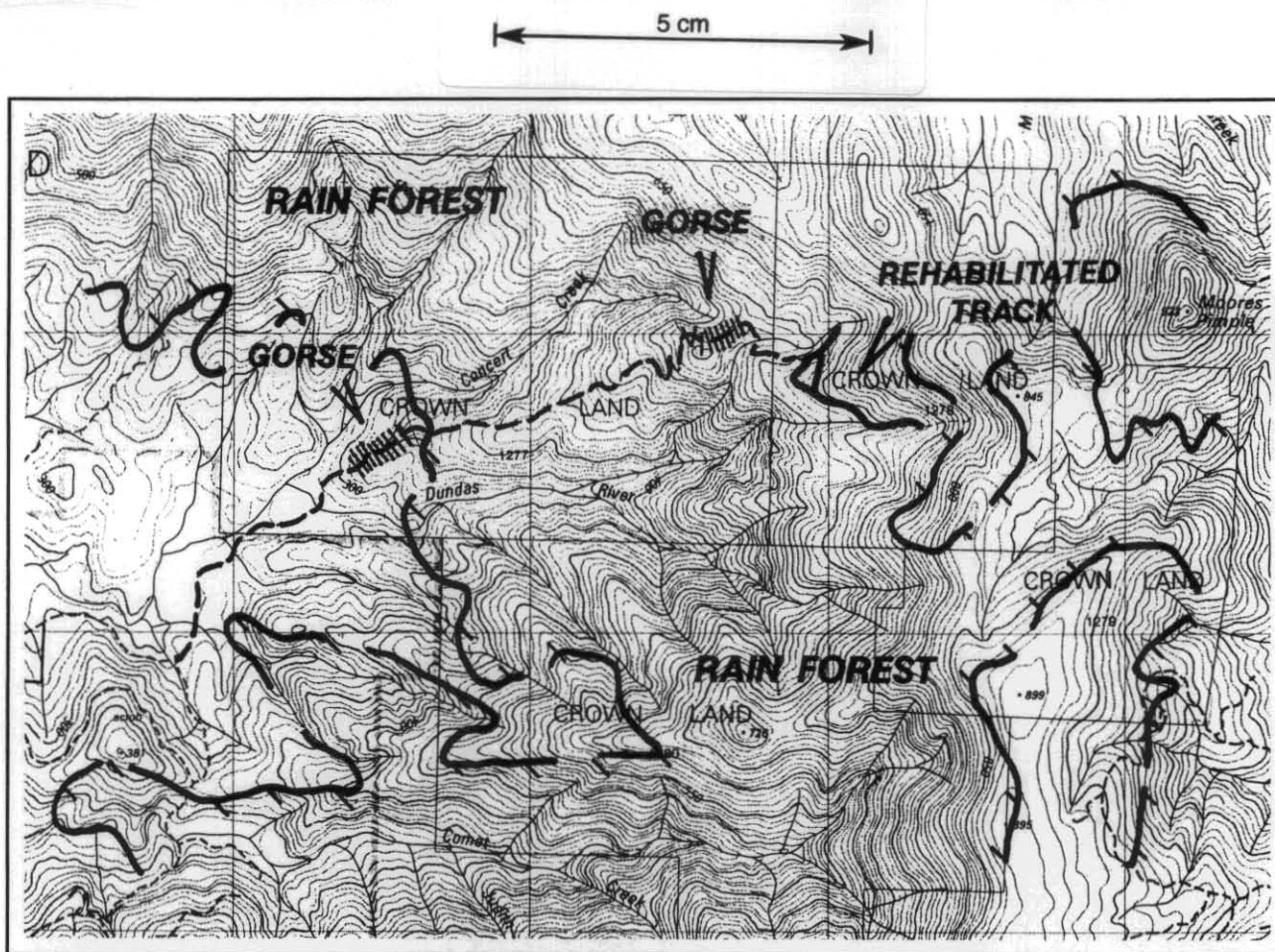


Figure 11  
Location of Maestries North track





**Figure 12.**  
Rainforest cover, Maestries North track

## COMSTOCK VALLEY

### **Location:**

Near Queenstown, south of Mount Sedgwick (see fig. 13, 14).

### **Municipality:**

West Coast.

### **Map Reference:**

Tasmap 1:100 000 series. Sheet 8013 (-4) — Franklin.  
Grid reference CP850480.

### **Land Status:**

Uncommitted Crown Land.

### **National Estate:**

None.

### **Economic Minerals:**

Prospective for base metals.

### **Access:**

Via existing 4WD tracks passing through the Mt Lyell Mining Lease in the Comstock Valley (see fig. 15).

### **Visibility of site:**

Moderate to high from vantage points overlooking the Comstock Valley.

### **Description of site:**

Heavy disturbance of area in the past, including a series of old exploration tracks, shallow costeans and drill pads. Some tracks were put in at right angles to the contours, resulting in massive sheet erosion.

### **Dimensions:**

Approximately 1.5 km of tracks.

### **Geology:**

Cambrian Mount Read volcanic sequence (Geological Atlas 1:50 000 Series. Sheet 58. Lyell.).

### **Vegetation type:**

Bare ground, rock and scrub due to heavy disturbance in past, with evidence of pre-existing rainforest community including some regrowth of high -ltitude rainforest species.

### **Historical Significance:**

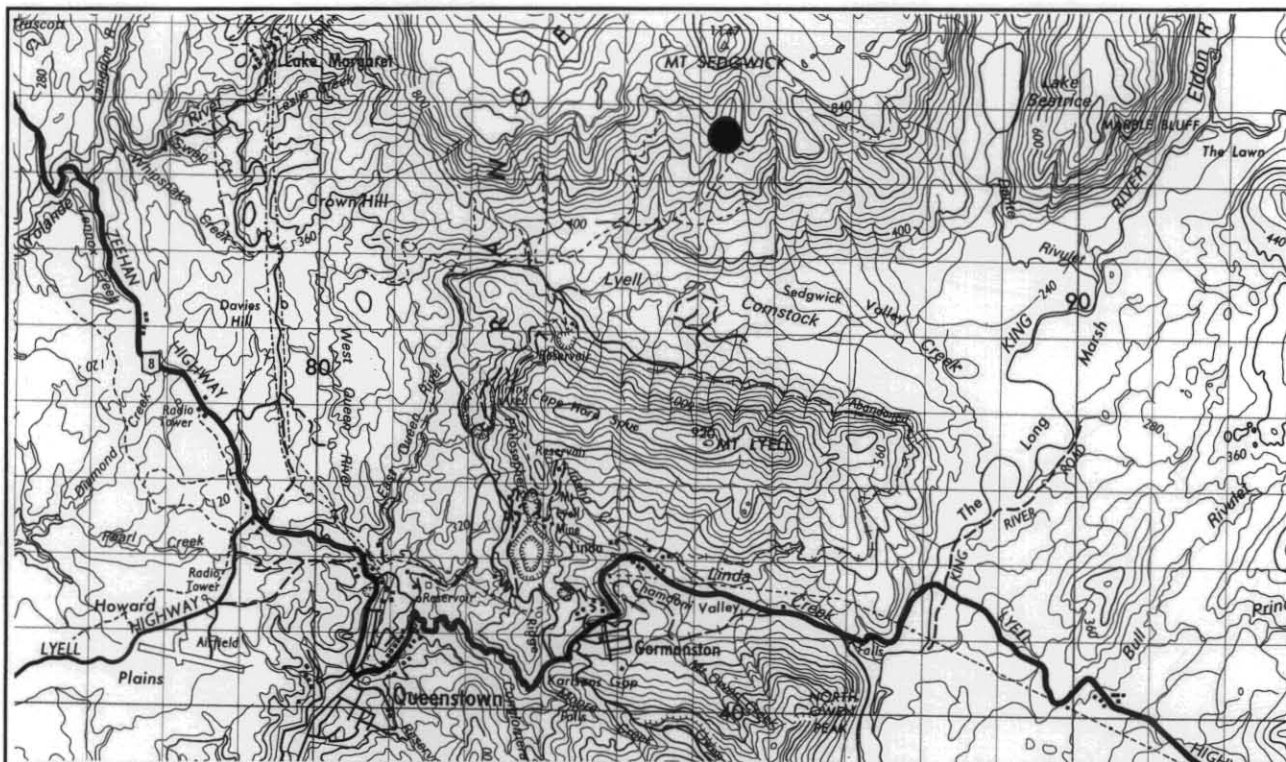
Late 1970s exploration of low historical significance. Track initially made in 1977 and extended in 1979–80.

### **Relics:**

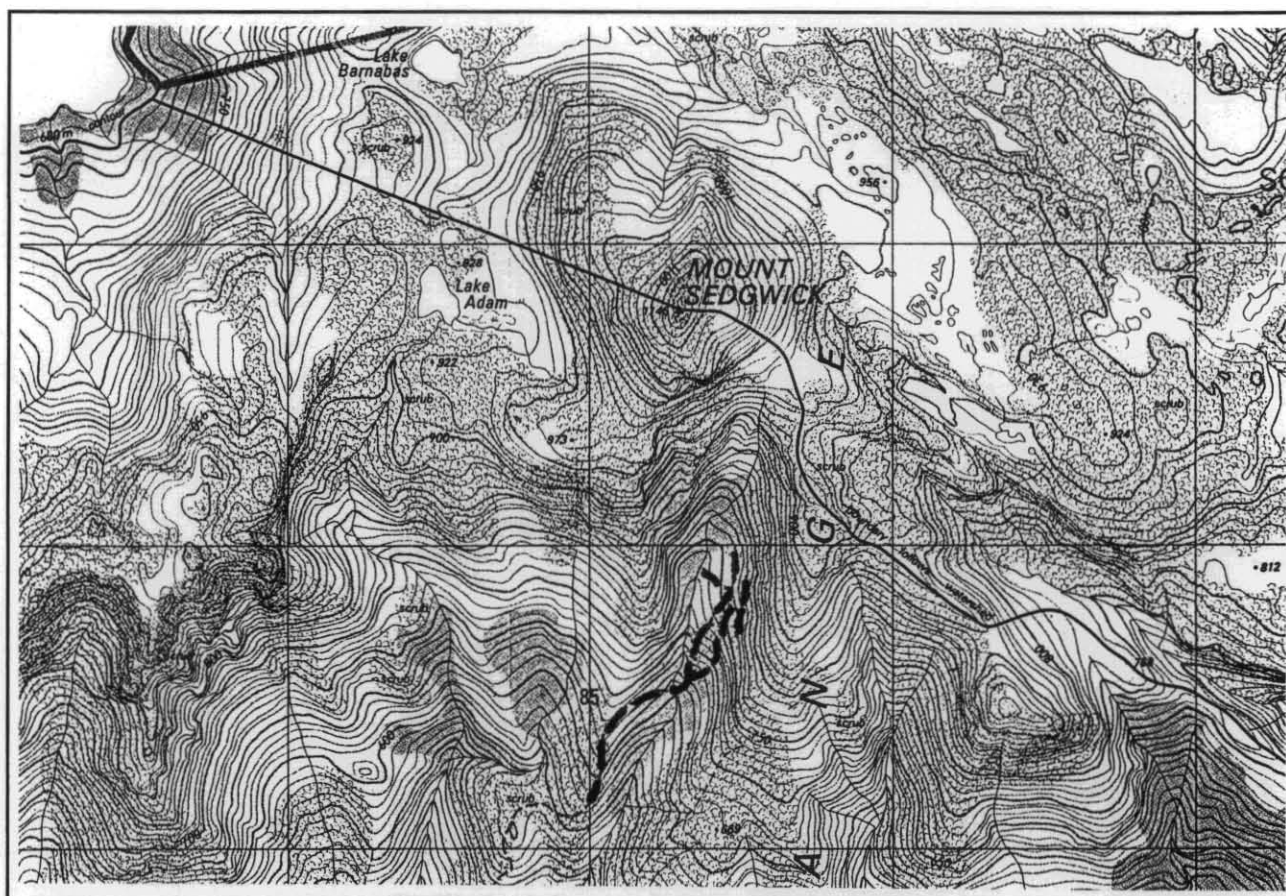
None.

### **Recommendations:**

The existing tracks predate the current exploration licence over this area. The area is considered prospective and access is still required. Some of the erosion could be addressed by the installation of large grips. This remedial work could possibly be carried out if additional drilling is done in the future using this track for access.



**Figure 13**  
Location of Comstock Valley track



**Figure 14**  
Detailed location of Comstock Valley track



## STERLING VALLEY

### Location:

Sterling River east of Rosebery to the north of Mount Murchison (see fig. 15, 16).

### Municipality:

West Coast.

### Map Reference:

Tasmap 1:100 000 series. Sheet 8014 (-4) — Sophia. Grid reference CP833713.

### Land Status:

Uncommitted Crown Land and South West Conservation Area.

### National Estate:

Partly within South West Tasmania Australian Heritage Commission Act registered entry (area inside South West Conservation Area).

### Economic Minerals:

Silver, lead, gold.

### Access:

South from the Murchison Highway, approximately four kilometres along a HEC Transmission line track and abandoned tramway alignment (see fig. 16).

### Visibility of site:

Low.

### Description of site:

Two exploration drill sites and access tracks suffering from significant erosion.

### Dimensions:

Approximately 800 m of access tracks four to five metres wide and drill pads 20 × 30 m in area.

### Geology:

Cambrian acid with intermediate volcanic and associated rocks and basic intermediate volcanic and associated rocks (Mt Read Volcanics Project 1:25 000 Series. Map 2. Geology of Rosebery–Mt Block area).

### Vegetation type:

Small-crowned old growth myrtle rainforest surrounded by scrub and buttongrass plains.

### Historical Significance:

Close to the old Sterling mine. Part of access track is along an old tramway which used to service the Sterling mine.

### Relics:

Not known.

### Recommendations:

Access tracks and drill pads should be rehabilitated. Recontouring and drainage works are required along tracks. Fertiliser treatment is also recommended as the topsoil layer is very thin. Adequate seed source is available from nearby forest.

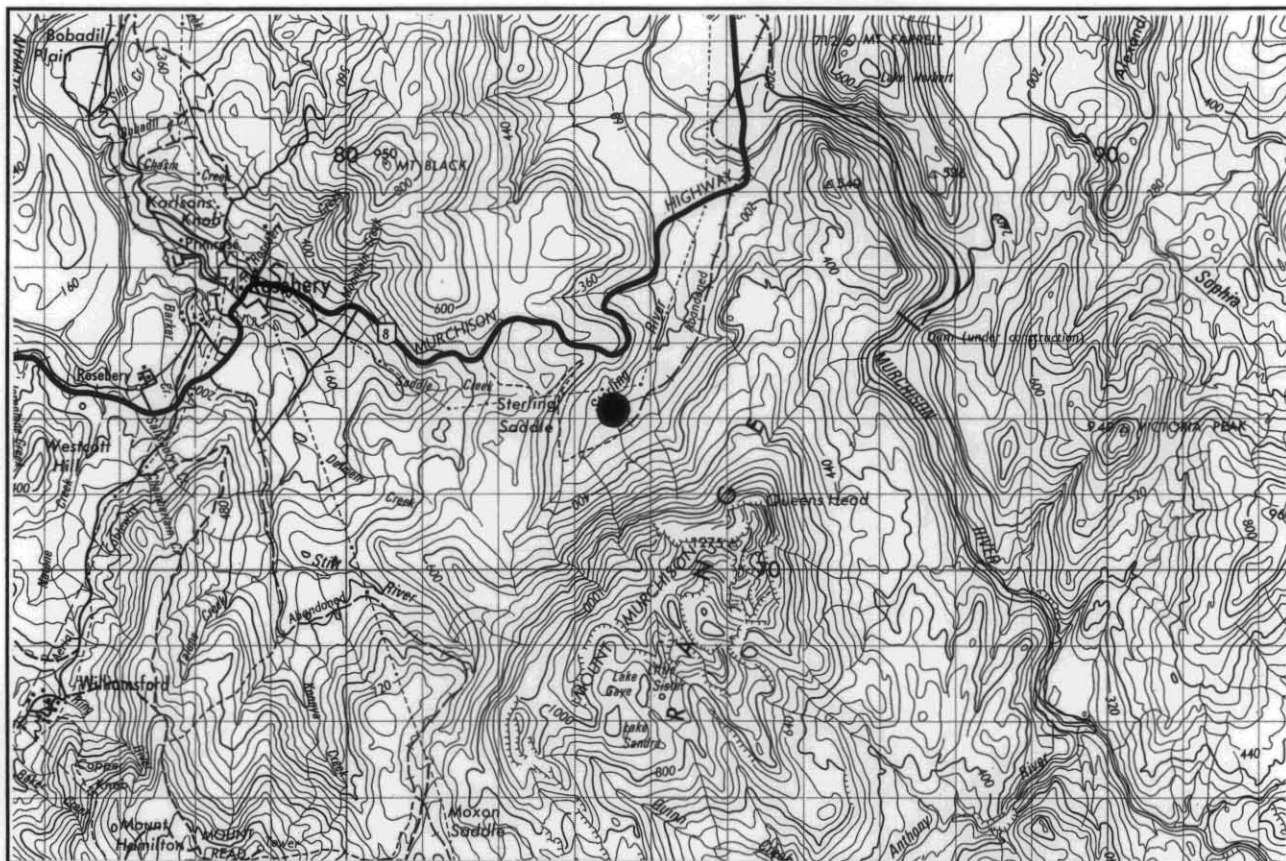


Figure 15

Location of Sterling Valley track

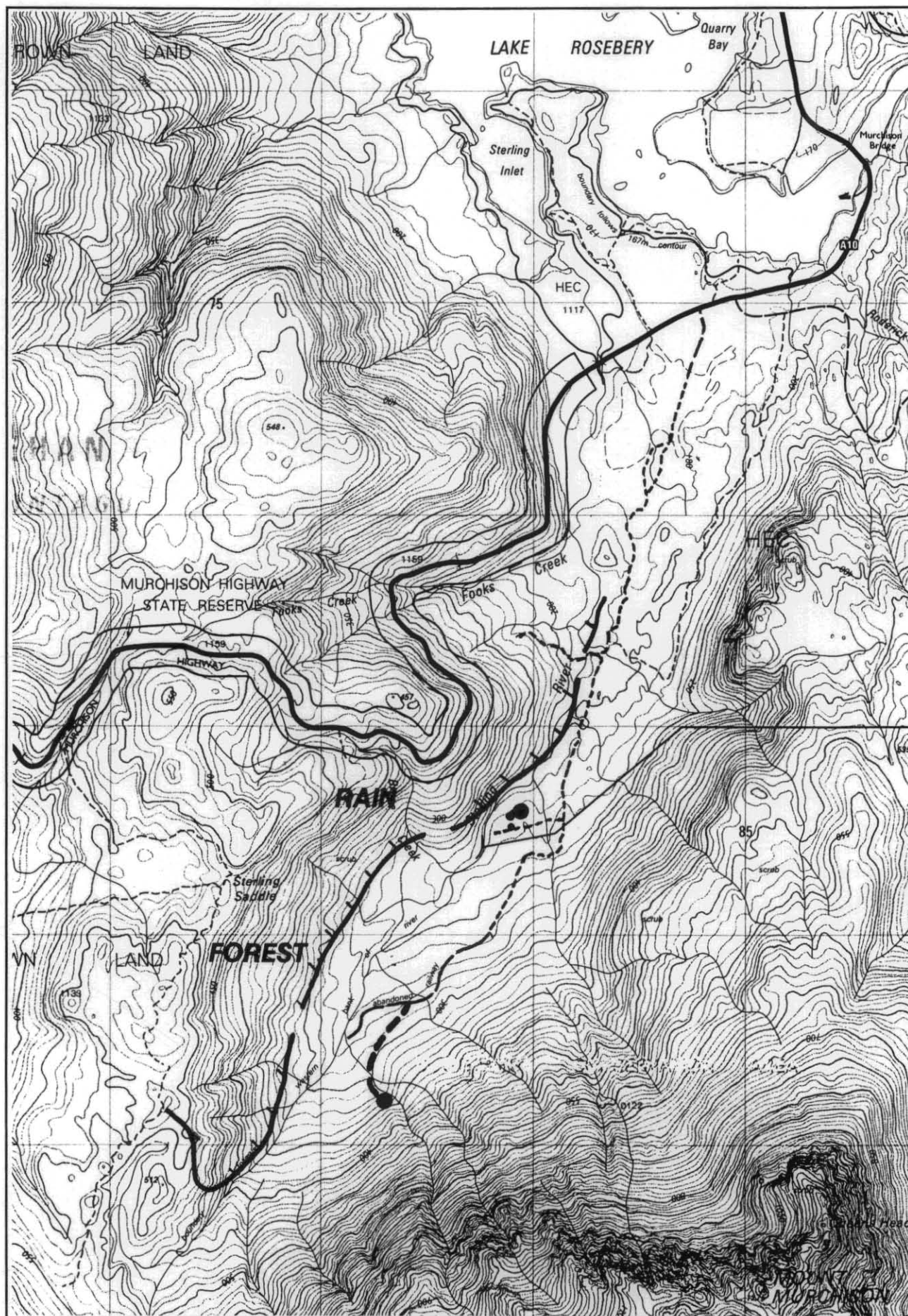
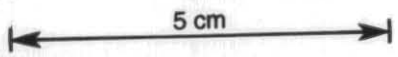


Figure 16

Rainforest cover, Sterling Valley track





## SILVER FALLS TRACK

### Location:

Valley to the north of Burns Peak (see fig. 17, 18).

### Municipality:

Waratah/Wynyard.

### Map Reference:

Tasmap 1:100 000 series. Sheet 8014 (-4) — Sophia.  
Grid reference CP775896.

### Land Status:

State Forest, Multiple Use Forest Land.

### National Estate:

None.

### Economic Minerals:

Prospective for base metals.

### Access:

Via Forestry Commission road west from the Murchison Highway at Boco Siding (see fig. 18).

### Visibility of site:

Low.

### Description of site:

Exploration track.

### Dimensions:

The track is approximately eight kilometres long, with the last 1.5 km in rainforest.

### Geology:

Cambrian volcanoclastic sediments and basic lavas from the Dundas Group (Mt Read Volcanics Project 1:25 000 Series. Map 2. Geology of Rosebery-Mt Block area).

### Vegetation type:

Mixed forest. Short-crowned myrtle rainforest intermixed with mature eucalypts and scrub.

### Historical Significance:

None; recent exploration track.

### Relics:

None.

### Recommendations:

The last 1.5 km of the exploration track should be rehabilitated.

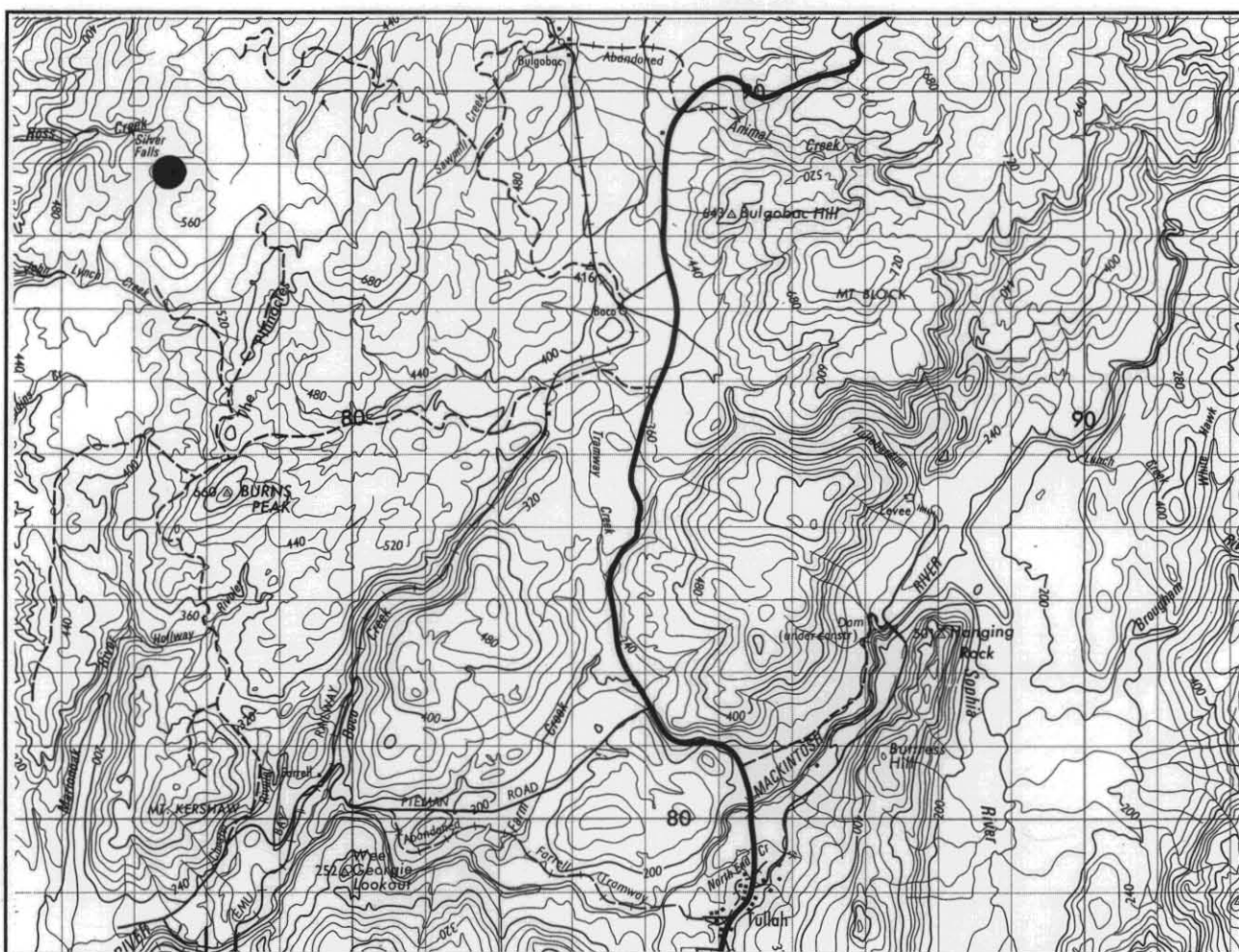
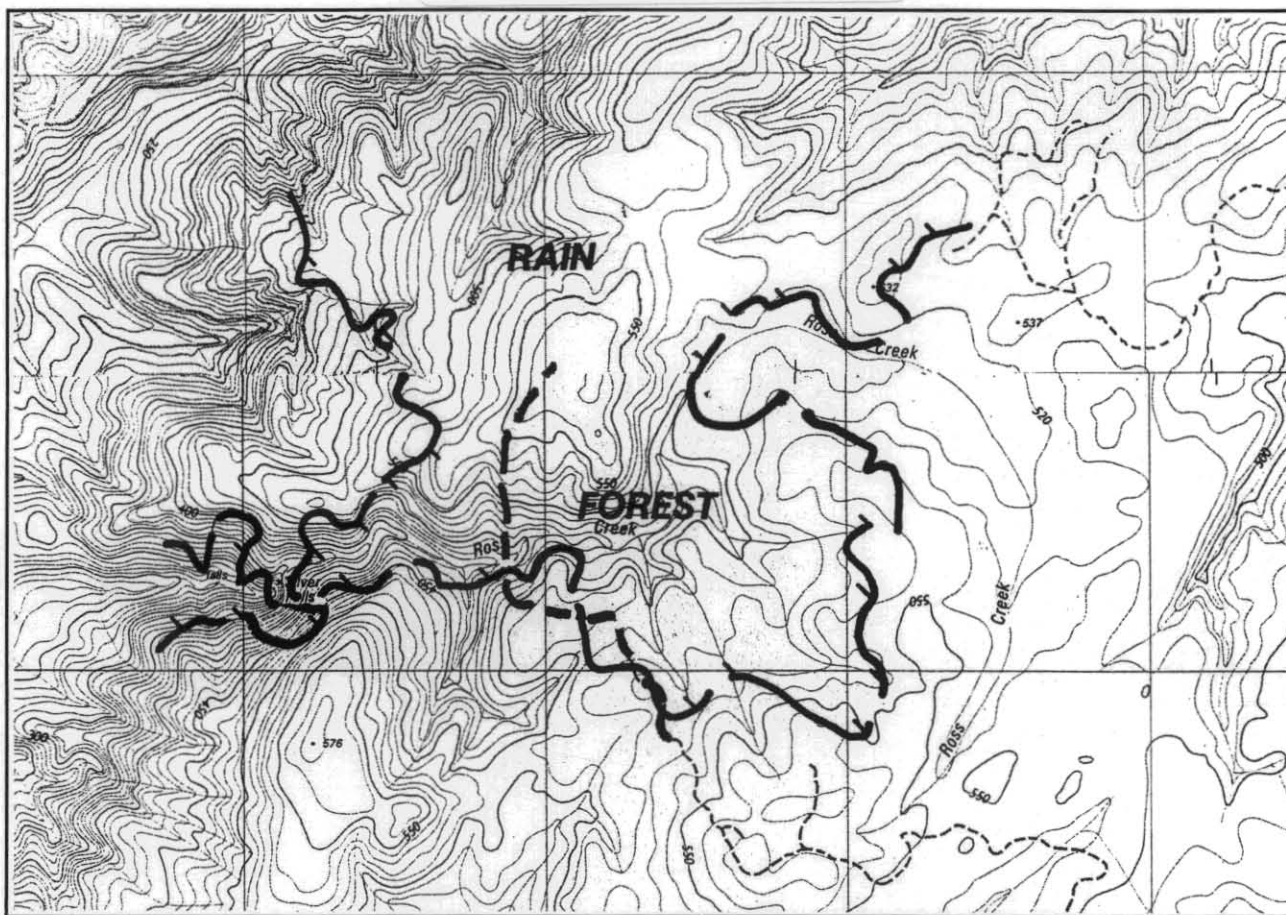


Figure 17

Location of Silver Falls track



5 cm



**Figure 18**  
Rainforest cover, Silver Falls track

## RAMSAY TRACK

### **Location:**

The northeastern slopes of Mt Ramsay (see fig. 19, 20).

### **Municipality:**

Waratah/Wynyard.

### **Map Reference:**

Tasmap 1:100 000 series. Sheet 7914 (-1) — Pieman.  
Grid reference CP720950.

### **Land Status:**

Track passes through State Forest, Multiple Use Forest Land, Crown Land and Mt Ramsay RAP.

### **National Estate:**

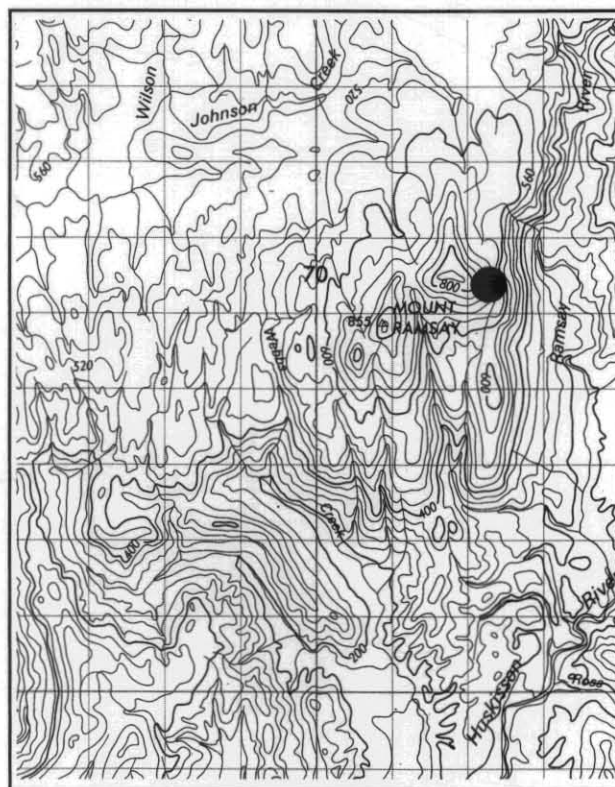
Within Meredith Range Australian Heritage Commission Act nomination.

### **Economic Minerals:**

Prospective for base metals and tin.

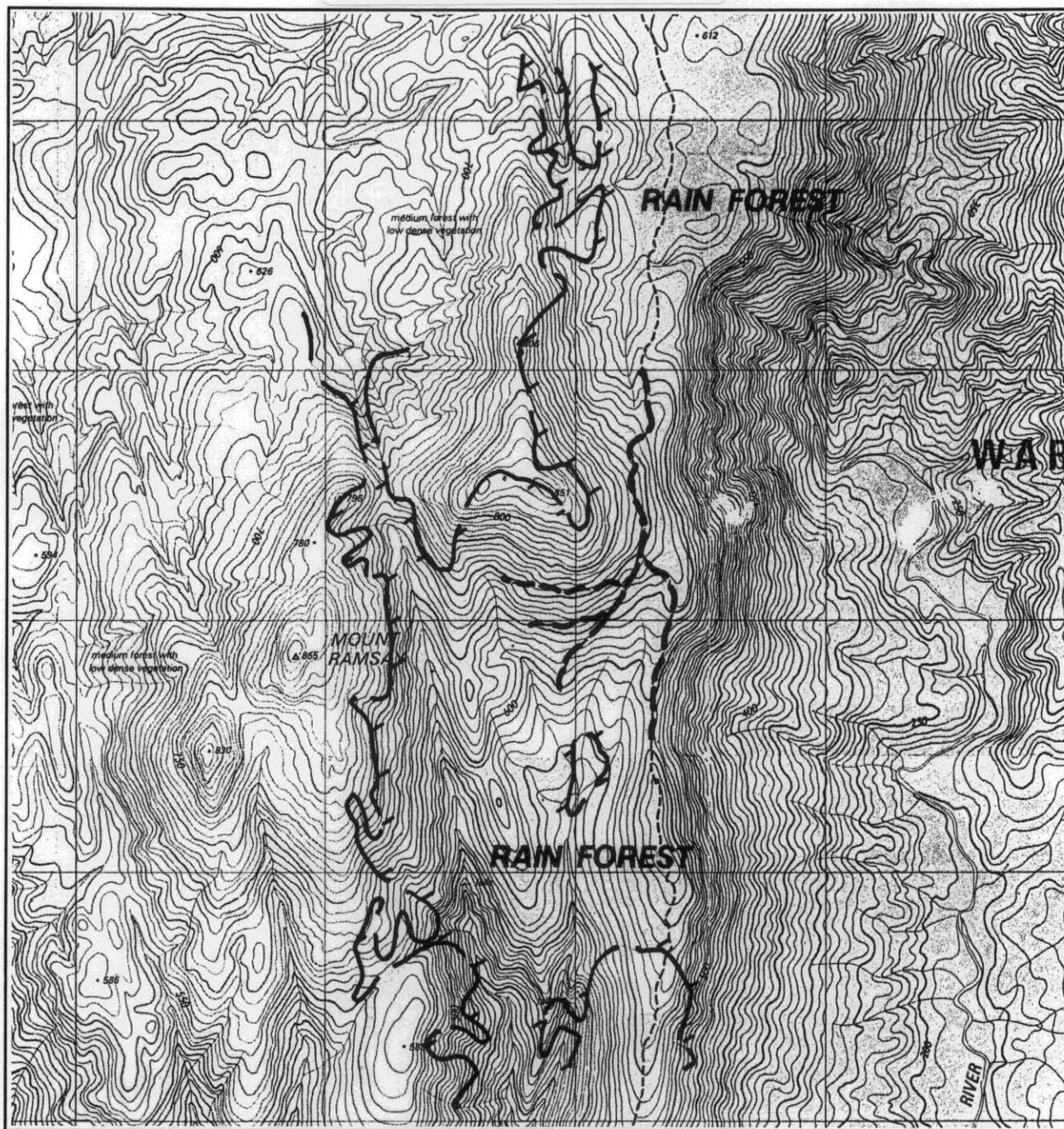
### **Access:**

4WD track leading south from the Waratah–Savage River road, 8 km southwest of Waratah (see fig. 20).



**Figure 19**  
Location of Ramsay track

5 cm



**Figure 20**  
Rainforest cover, Ramsay track

**Visibility of site:**

Not visible.

**Description of site:**

Old 4WD tracks, drill pads and alluvial mine workings.  
Tracks suffering from poor drainage.

**Dimensions:**

Approximately 2½ km of tracks.

**Geology:**

Upper Devonian granite (adamellite) (Geological Atlas 1:50 000 Series. Sheet 43. Corinna).

**Vegetation type:**

Short-crowned and regrowth myrtle rainforest intermixed with secondary species.

**Historical Significance:**

An 1800s pack track passed through the site along the route of the present track. The Bertha walking track is located to the west of Mt Ramsay.

**Relics:**

Not known.

**Recommendations:**

Improvements to track drainage required. Revegetation measures could be initiated at the alluvial mine area.



## SPECIMEN REEF

### Location:

Six kilometres to the north of the Savage River mine (see fig. 21, 22).

### Municipality:

Waratah/Wynyard.

### Map Reference:

Tasmap 1:100 000 series. Sheet 7915 (-3) — Arthur River. Grid reference CQ510108.

### Land Status:

Crown Land, Deferred Forest Land and Savage River RAP.

### National Estate:

Within Savage River Australian Heritage Commission Act registered entry and within Mt Vero Wilderness Area nomination.

### Economic Minerals:

Gold, osmiridium and chromite.

### Access:

North from Savage River mine along Pipeline Road (restricted access).

### Visibility of site:

Low.

### Description of site:

Old gold mining sites from the 1880s and recent exploration tracks and drill sites from the early 1980s.

### Dimensions:

Approximately 200 hectares.

### Geology:

Precambrian metamorphic rocks and metaquartzite sequences with some platy quartzite units (Geological Atlas 1:250 000 Series. Sheet SK/55-3. Burnie).

### Vegetation type:

Callidendrous rainforest, with scrub and celery top regrowth in disturbed areas.

### Historical Significance:

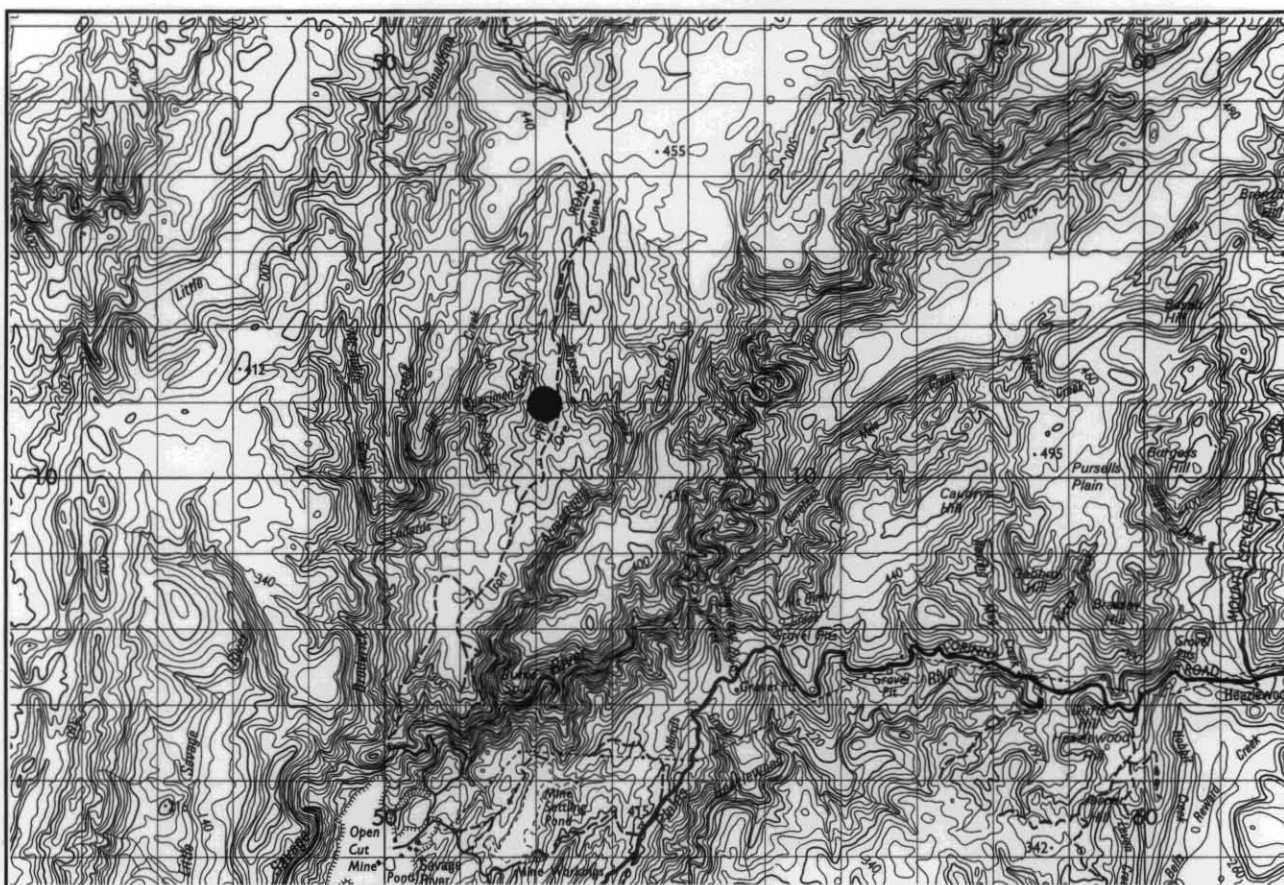
Old mine sites and structures of historical interest. During the 1880s a tramway was used to transport the ore, which was crushed using a six-head battery with water supplied by a 6.5 km long water race.

### Relics:

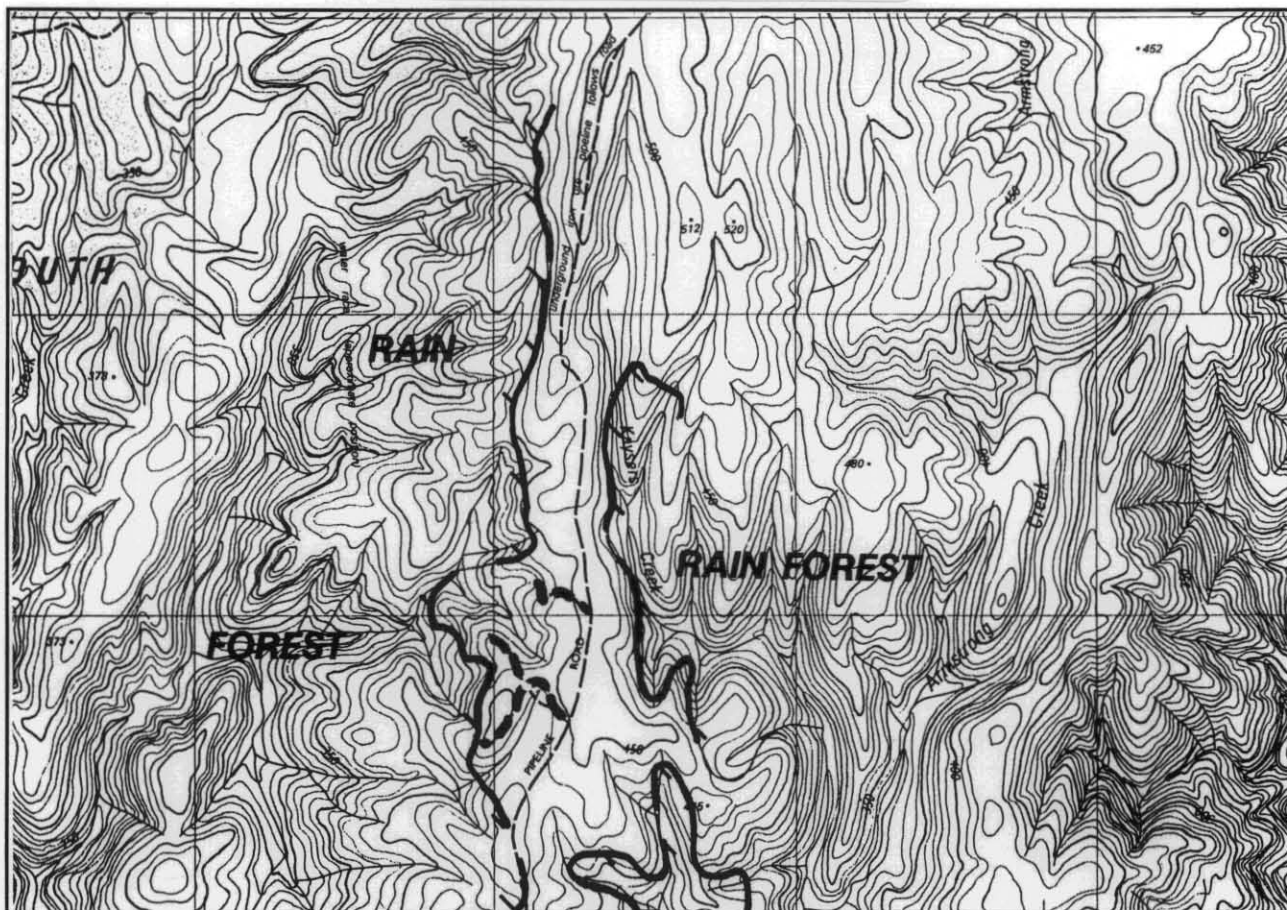
Remains of gold mining include tunnels, dams, old stamper, crusher, adits, and shafts.

### Recommendations:

An archaeological investigation is required prior to any large-scale disturbance of the area. Recent exploration tracks could be rehabilitated.



**Figure 21**  
Location of Specimen Reef



**Figure 22**  
Rainforest cover, Specimen Reef

## BULGOBAC RIVER

### Location:

Que Road to the west of the Murchison Highway (see fig. 23, 24).

### Municipality:

Waratah/Wynyard.

### Map Reference:

Tasmap 1:100 000 series. Sheet 8014 (-4) — Sophia.  
Grid reference CP890956.

### Land Status:

State Forest, Multiple Use Forest Land.

### National Estate:

None.

### Economic Minerals:

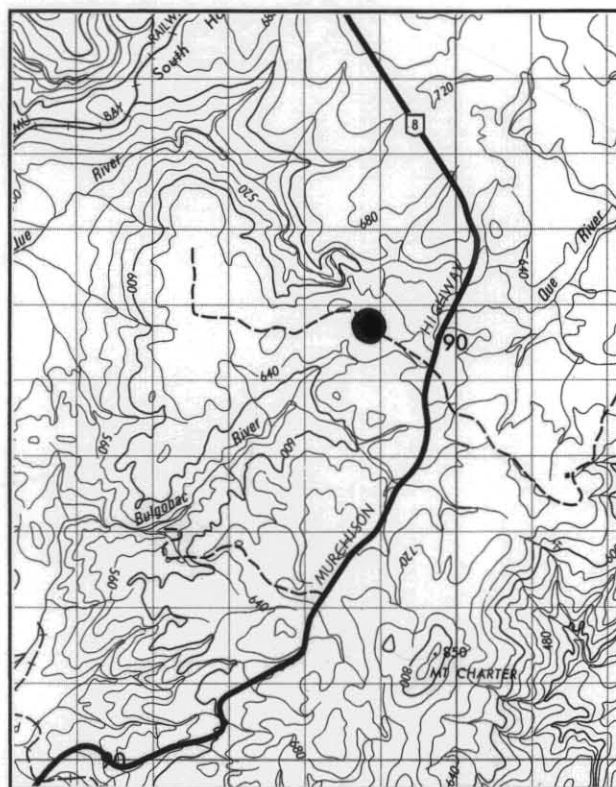
Prospective for base metals.

### Access:

Via the Murchison Highway, west along Que Road (see fig. 24).

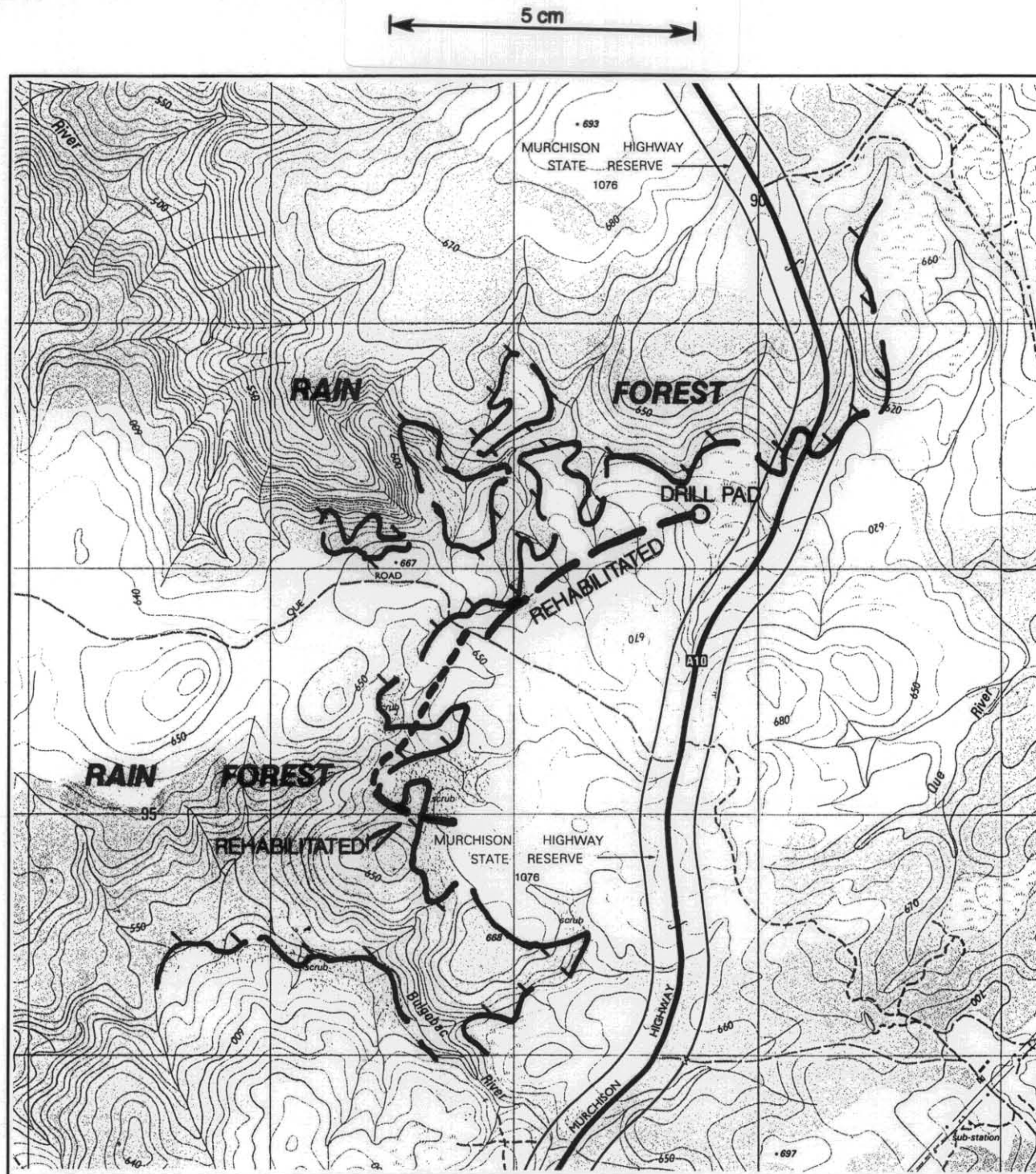
### Visibility of site:

Low.



**Figure 23**  
Location of Bulgobac River site





**Figure 24**  
Rainforest cover, Bulgobac River site

**Description of site:**

Two access tracks (north and south from Que Road) and one drill pad 30 × 30 m in area.

**Dimensions:**

Tracks approximately five metres in width and 1.5 km long. The entire northern track has been rehabilitated, as has part of the southern track.

**Geology:**

Cambrian greywacke turbidite sequences (Geological Atlas One Mile Series. Sheet 44. Mackintosh).

**Vegetation type:**

Rainforest over part of southern track and buttongrass tea-tree scrub (northern track).

**Historical Significance:**

None.

**Relics:**

None.

**Recommendations:**

Remainder of the southern track could be revegetated and follow-up seeding and/or fertilising considered on existing rehabilitated areas.

## MOUNT STORMONT

### Location:

The mine is situated along the Lea River about three kilometres west of the Moina township, near Lake Gairdner (see fig. 25, 26).

### Municipality:

Kentish.

### Map Reference:

Tasmap 1:100 000 series. Sheet 8115 (-3) — Forth.  
Grid reference DQ192060.

### Land Status:

State Forest, Multiple Use Forest Land.

### National Estate:

Within Black Bluff Range/Middlesex Australian Heritage Commission nomination.

### Economic Minerals:

Gold.

### Access:

West off the Cradle Mountain Road along Moina Road, across the Iris River and approximately two kilometres southwest along a 4WD track (see fig. 26).

### Visibility of site:

Not visible.

### Description of site:

Two old mine sites in the area. Recent drill tracks and pads which were being rehabilitated in 1991.

### Dimensions:

Two old mining leases of approximately 50 ha and about six kilometres of access tracks.

### Geology:

Ordovician sandstone and Tertiary basalt (Geological Atlas One Mile Series. Sheet 37. Sheffield.).

### Vegetation type:

Mature and regrowth myrtle rainforest along the river surrounded by eucalypt regrowth and buttongrass plains.

### Historical Significance:

Not known, but recent exploration track is not significant.

### Relics:

Not known.

### Recommendations:

Monitor rehabilitation of access tracks.

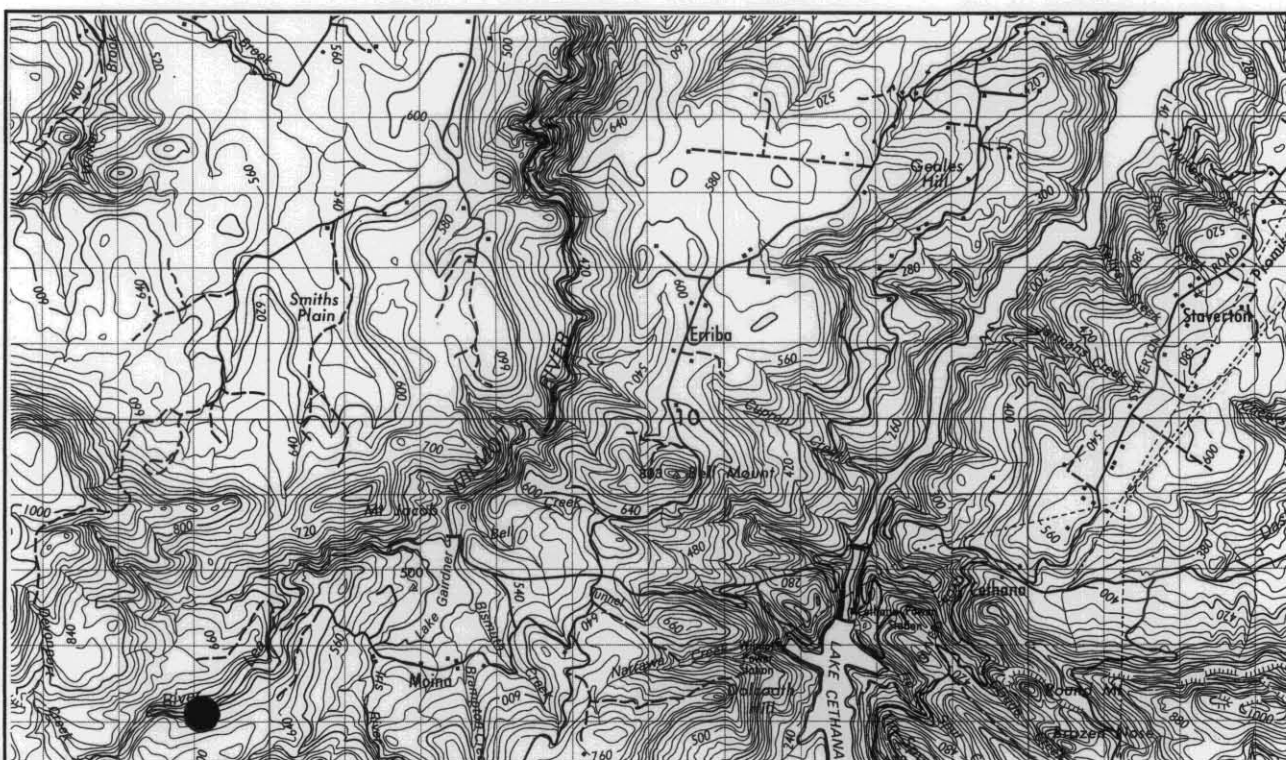
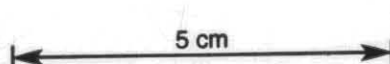
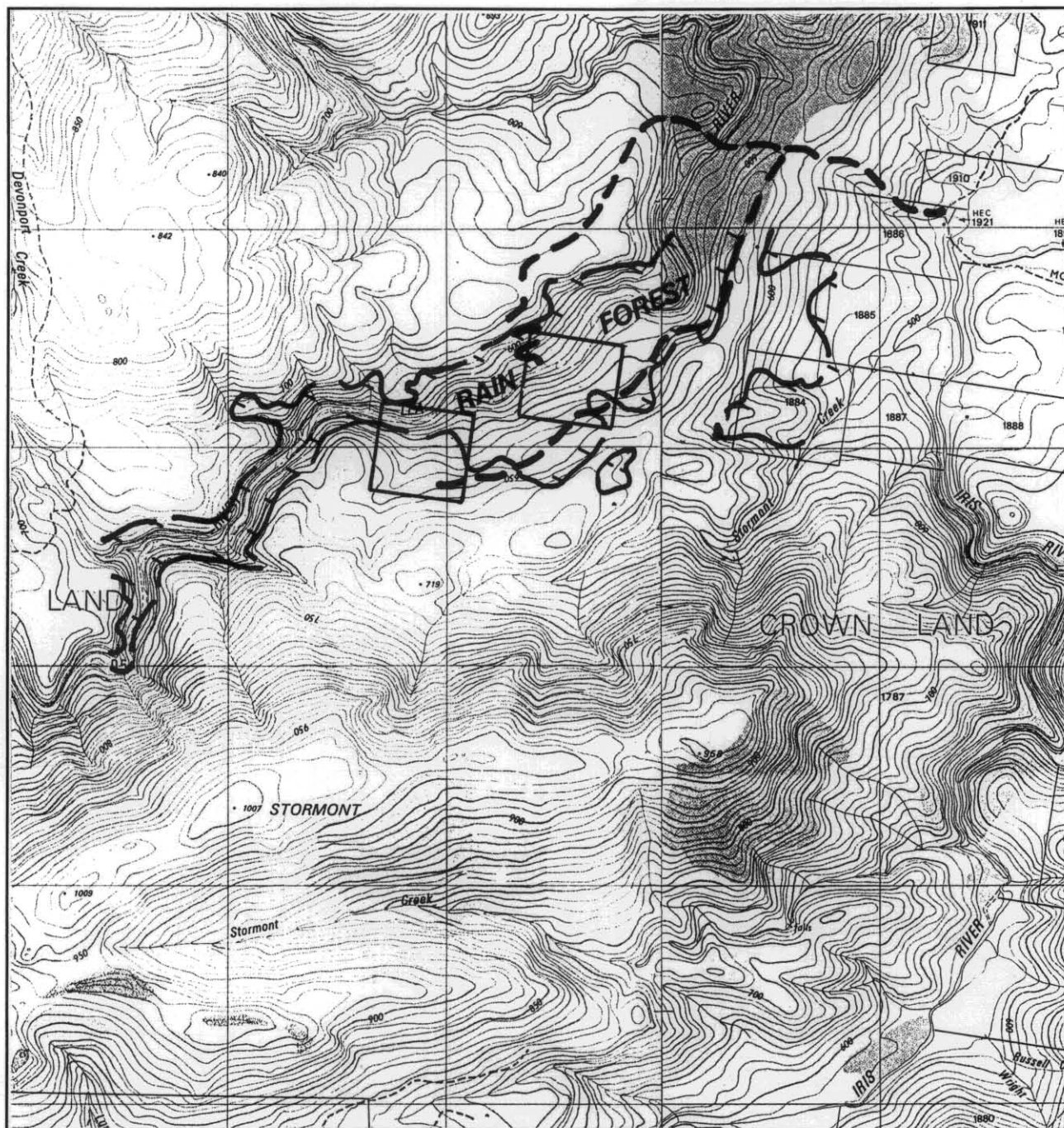


Figure 25

Location of mine sites and tracks, Mt Stormont





**Figure 26**

Mine sites and rainforest cover, Mt Stormont

5 cm



## REFERENCES

- BRADSHAW, A. D.; CHADWICK, M. J. 1980. *The restoration of land*. University of California Press.
- BROWN, M. J.; JARMAN, S. J.; GRANT, J.; CORBETT, K. D.; KANTVILAS, G. 1990. Tasmanian rainforest communities: their description, environmental relationships and conservation status, in: Tasmanian Rainforest Research. Proceedings of a seminar held in Hobart, 14 June 1990. *Report National Rainforest Conservation Program (Tasmania)*. 1
- DEPARTMENT OF THE ENVIRONMENT. 1984. *Guidelines for the rehabilitation of quarries and extractive pits*. Department of the Environment, Tasmania.
- DUCKETT, T. A. P. 1990. *Rehabilitation guidelines for forest construction*. Forestry Commission, Tasmania.
- DUCKETT, T. A. P. 1987. *Revegetation of disturbed sites in Tasmania with native species: A practical guide*. Department of Environment and Planning, Hobart
- GAUGHWIN, D. 1991. *North East Tasmania Historic Sites Inventory Project Report*. Unpublished report, Forestry Commission, Tasmania.
- KIRKPATRICK, J. B.; DUNCAN, F. 1987. Tasmanian high altitude grassy vegetation: its distribution, community composition and conservation status. *Australian Journal of Ecology* 12:73-86.
- KIRKPATRICK, J. B.; GILFEDDER, L.; FENSHAM, R. 1988. *City parks and cemeteries: Tasmania's remnant grasslands and grassy woodlands*. Tasmanian Conservation Trust, Hobart.
- LYNCH, J. 1992. *Strategy for the NRCP Rainforest Rehabilitation Project*. Unpublished Report, Forestry Commission, Tasmania.
- LYNCH, J. 1993. *Final Report for the NRCP Rainforest Rehabilitation Project*. Unpublished Report, Forestry Commission, Tasmania.
- PINKARD, L. 1990. Direct seeding — the Tasmanian experience, in: *Sowing the Seeds*. Direct Seeding and Natural Regeneration Conference Proceedings, Greening Australia Ltd.
- WHINAM, J.; EBERHARD, S.; KIRKPATRICK, J.; MOSCAL, T. 1989. *Ecology and conservation of Tasmanian sphagnum peatlands*. Tasmanian Conservation Trust, Hobart.
- WORKING GROUP FOR FOREST CONSERVATION. 1990. *Recommended areas for protection of rainforest, wet eucalypt and dry sclerophyll forest in Tasmania*. Forestry Commission, Tasmania.

[1 October 1993]