

CORNWALL COAL ST PAULS RIVER DDH12

Location: Royal George  
AMG Co-ordinates: E 577 500  
 N 5 365 500

Logged by: J.H. Bryan  
Drilled by: Stacpoole Drilling

Collar R.L.: 520m approx.  
Total Depth: 180.20m

Commenced: 30.1.85  
Completed: 8.2.85

	<u>Estimated Thickness (m)</u>	<u>Estimated Depth to Base of Stratum (m)</u>	<u>Remarks</u>
TRICONE ROLLER BIT (NON CORE)	13.200	13.200	
MUDSTONE, grey, soft	0.170	13.370	
SANDSTONE, grey, lithic, fine to medium grained, slightly in part with carbonaceous or coaly wisps and partings towards the base	6.455	19.825	
<u>COAL</u> , dull with minor bright bands	0.24	20.065 )	
, dull, very slightly weathered	0.16	20.225 )	
		)	
CLAYSTONE, grey to grey-brown	0.05	20.275 )	
		)	
<u>COAL</u> , dull	0.025	20.300 )	SAMPLE
		)	(PLY 1)
CLAYSTONE, dark grey, carbonaceous	0.035	20.335 )	Thickness:
		)	1.375 m
<u>COAL</u> , dull	0.115	20.450 )	
		)	
CLAYSTONE, dark brown to black, carbonaceous	0.135	20.585 )	
		)	
<u>COAL</u> , dull	0.295	20.880 )	

023

CORNWALL COAL ST PAULS RIVER DDH12

	<u>Estimated Thickness (m)</u>	<u>Estimated Depth to Base of Stratum (m)</u>	<u>Remarks</u>
CLAYSTONE, grey, soft	0.320	21.200	
<u>COAL</u> , dull, fissile in part	0.090	21.29	
CLAYSTONE, dark brown, carbonaceous with abundant plant debris	0.280	21.57	
MUDSTONE, grey, sandy in part	1.54	23.11	
CLAYSTONE, grey to grey-green, soft	1.26	24.37	
CLAYSTONE, white, soft, talc like or soapy texture and feel	0.38	24.75	
CLAYSTONE, dark brown to black, coaly in part and carbonaceous throughout	0.58	25.33	
SILTSTONE, grey, hard	1.13	26.46	
SANDSTONE, grey, lithic, fine to medium grained, occasional coaly fragments and partings	10.000	36.46	
<u>COAL</u> , dull with minor bright bands	0.28	36.74	
CLAYSTONE, black to brown, carbonaceous throughout and coaly in part	0.490	37.23	
CLAYSTONE, grey to grey-brown	0.070	37.30	

CORNWALL COAL ST PAULS RIVER DDH12

	<u>Estimated Thickness (m)</u>	<u>Estimated Depth to Base of Stratum (m)</u>	<u>Remarks</u>
CLAYSTONE, black, coaly	0.160	37.46	
CLAYSTONE, brown, soft, waxy	0.350	37.81	
<u>COAL</u> , dull with minor bright bands	0.180	37.99	
CLAYSTONE, brown	0.015	38.005	
<u>COAL</u> , dull with minor bright bands	0.025	38.03	
CLAYSTONE, black, carbonaceous	0.145	38.175	
CLAYSTONE, grey	0.025	38.200	
CLAYSTONE, black, carbonaceous	0.645	38.845	
<u>COAL</u> , dull	0.110	38.955	
CLAYSTONE, brown	0.030	38.985	
<u>COAL</u> , dull	0.030	39.015	
, dull with numerous bright bands	0.100	39.115	
, dull	0.075	39.190	
CLAYSTONE, brown, carbonaceous with occasional coaly bands	0.330	39.52	
MUDSTONE, grey, soft, breaks up on exposure to air	1.590	41.110	

CORNWALL COAL ST PAULS RIVER DDH12

	<u>Estimated Thickness (m)</u>	<u>Estimated Depth to Base of Stratum (m)</u>	<u>Remarks</u>
SANDSTONE, fine grained, grey, lithic	2.350	43.46	
SANDSTONE, grey, medium to coarse, lithic, massive	21.10	64.56	
CLAYSTONE, grey, dark brown-black, carbonaceous	0.425	65.045	
<u>COAL</u> , dull	0.18	65.225	
CLAYSTONE, brown	0.010	65.235	
<u>COAL</u> , dull	0.040	65.275	
CLAYSTONE, dark brown, carbonaceous	0.170	65.445	
<u>COAL</u> , dull	0.070	65.515	
CLAYSTONE, dark grey	0.010	65.525	
<u>COAL</u> , dull	0.345	65.870	
CLAYSTONE, black to brown, carbonaceous	0.140	66.01	
SILTSTONE, grey	1.610	67.62	
SANDSTONE, grey, fine grained, lithic	1.58	69.20	
SANDSTONE, grey, lithic, medium grained, massive with occasional claystone and coaly clasts	46.055	115.255	

CORNWALL COAL ST PAULS RIVER DDH12

	<u>Estimated Thickness (m)</u>	<u>Estimated Depth to Base of Stratum (m)</u>	<u>Remarks</u>
CLAYSTONE, black, coaly in part, with coarse sandstone interbeds	0.410	115.665	
SANDSTONE, grey, lithic, medium grained	2.205	117.87	
MUDSTONE, grey-green to black	2.89	120.76	
<u>COAL</u> , dull to stony	0.170	120.93	
MUDSTONE, grey to grey-green, core broken	2.000	122.93	
SANDSTONE, grey, lithic, fine grained at top grading to medium	7.66	130.59	
MUDSTONE, grey with occasional sandy interbeds	1.610	132.20	
CLAYSTONE, black, coaly	0.48	132.68	
MUDSTONE, grey-green	0.210	132.89	
CLAYSTONE, black, coaly	0.38	133.27	
CLAYSTONE, brown	0.015	133.285	
CLAYSTONE, black, coaly	0.160	133.445	
<u>COAL</u> , dull to stony	0.130	133.575	
CLAYSTONE, grey-brown, waxy	0.060	133.635	

087

CORNWALL COAL ST PAULS RIVER DDH12

	<u>Estimated Thickness (m)</u>	<u>Estimated Depth to Base of Stratum (m)</u>	<u>Remark</u>
CLAYSTONE, black, coaly	0.300	133.935	
<u>COAL</u> , dull with numerous bright bands	0.07	134.005	
, dull	0.055	134.06	
CLAYSTONE, brown, soft	0.055	134.115	
CLAYSTONE, black, carbonaceous to coaly	0.240	134.355	
MUDSTONE, grey-green	0.670	135.025	
SANDSTONE, grey, lithic, medium grained	1.975	137.00	
MUDSTONE, grey	0.550	137.55	
CLAYSTONE, black, coaly	0.350	137.90	
MUDSTONE, grey	0.375	138.275	
<u>COAL</u> , dull	0.040	138.315	
CLAYSTONE, brown	0.010	138.325	
<u>COAL</u> , dull	0.025	138.35	
CLAYSTONE, brown	0.010	138.36	
<u>COAL</u> , dull	0.140	138.50	
MUDSTONE, grey to grey-green	1.67	140.17	

028

CORNWALL COAL ST PAULS RIVER DDH12

	<u>Estimated Thickness (m)</u>	<u>Estimated Depth to Base of Stratum (m)</u>	<u>Remarks</u>
SILTSTONE, grey grading to fine lithic sandstone	0.68	140.85	
SANDSTONE, grey, lithic, medium grained	2.47	143.32	
MUDSTONE, grey-green	1.860	145.18	
SANDSTONE, grey, lithic, medium	1.92	147.100	
MUDSTONE, grey-green	0.100	147.20	
CLAYSTONE, grey-black, carbonaceous	0.100	147.30	
<u>COAL</u> , dull	0.180	147.48	
MUDSTONE, grey-brown	1.180	148.66	
SILTSTONE, grey, hard	3.22	151.88	
SANDSTONE, grey, lithic, medium grained	8.18	160.06	
MUDSTONE, grey to grey-green	6.565	166.625	
<u>COAL</u> , dull	0.065	166.69	
MUDSTONE, grey	0.095	166.785	
<u>COAL</u> , dull with numerous bright bands	0.315	167.100	
CLAYSTONE, brown	0.005	167.105	

CORNWALL COAL ST PAULS RIVER DDH12

	<u>Estimated Thickness (m)</u>	<u>Estimated Depth to Base of Stratum (m)</u>	<u>Remarks</u>
<u>COAL</u> , dull	0.080	167.185	
CLAYSTONE, grey	0.020	167.205	
<u>COAL</u> , dull	0.025	167.23	
CLAYSTONE, black, carbonaceous	0.60	167.83	
MUDSTONE, grey, laminated	4.825	172.655	
CLAYSTONE, buff, hard	0.010	172.665	
CLAYSTONE, black, coaly	0.080	172.745	
<u>COAL</u> , dull	0.175	172.920	
MUDSTONE, grey, hard	1.590	174.51	
CLAYSTONE, grey to black	0.035	174.545	
<u>COAL</u> , dull to stony	0.170	174.715	
CLAYSTONE, dark grey	0.050	174.765	
<u>COAL</u> , dull with pyrite on cleats at base	0.600	175.365	
SILTSTONE, grey, hard	0.61	175.975	
MUDSTONE, grey	3.745	179.72	
SANDSTONE, grey, lithic, fine grained	0.48	180.20	

BASE OF HOLE

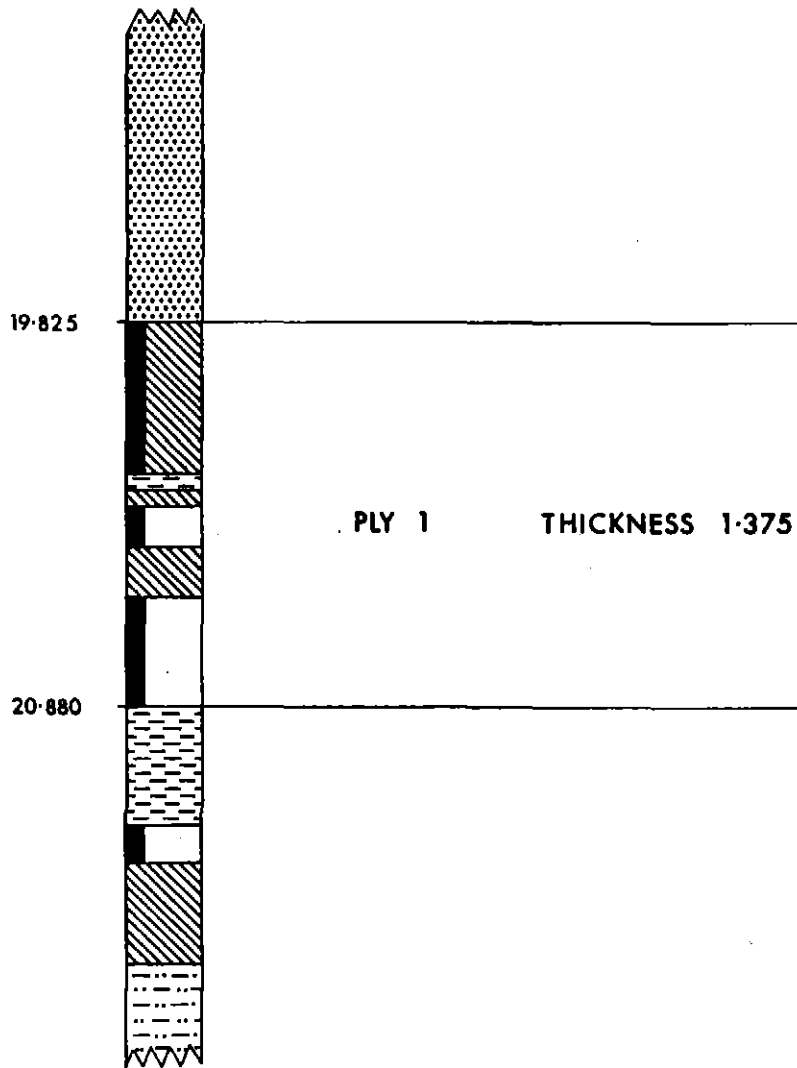
030

# CORNWALL COAL COMPANY N.L.

## St Pauls River

### DDH 12

471031



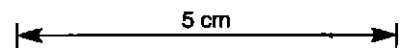
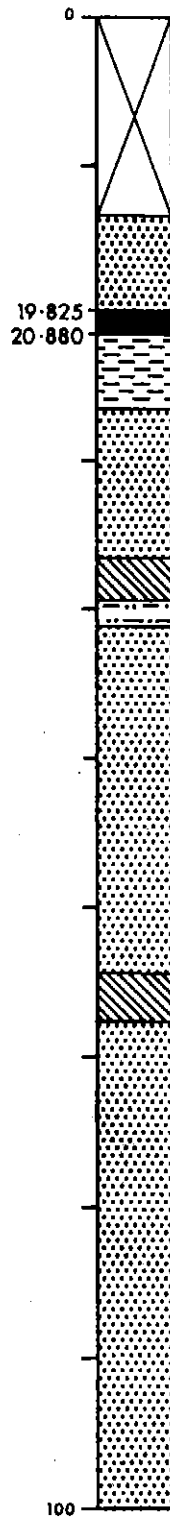
5 cm

031 **CORNWALL COAL COMPANY N.L.**

**St Pauls River**

**DDH 12**

471032



032

# CORNWALL COAL COMPANY N.L.

## St Pauls River

### DDH 12

471033

