

RENISON LIMITED - DRILL CORE RECORD

108

HOLE NUMBER	MH3	SURVEY			From - To	Distance D	VERTICAL		HORIZONTAL	
		Depth	Bearing	Dip			D.Sin.Dip	R.L.	D.Cos.Dip	Prog. Total
PURPOSE	To intersect the mineralization encountered in MH2 and to investigate the stratigraphy of the area.	COLLAR	211°MAG	-73.5°	0 - 11.5	11.5	11.03	2183.48	3.27	3.27
		23m	212°MAG	-71.5°	- 39.0	27.5	26.08	2157.4	8.73	12.00
		55m	209°MAG	-73.0°	- 80.5	41.5	39.69	2117.71	12.13	24.13
		106m	202°MAG	-75.0°	-122.0	41.5	40.09	2077.62	10.74	34.87
LOCATION	Merton Hill	138m	203°MAG	-75.0°	-147.4	25.4	24.53	2053.09	6.57	41.44
COLLAR R.L.	2194.51m									
CO-ORDINATES	5379789.6mN ; 367582.25mE									
LENGTH	147.4m									
HOLE SIZE	0 - 6 H.W. 6 - 147.4m H.Q.									
DATE DRILLED	12.1.81 - 2.2.81									
SIGNIFICANT CORE LOSS ZONES	_____									
ORE ZONE GROUND CONDITIONS	_____									
LOGGED BY	L. MARTIN									
COMMENTS										

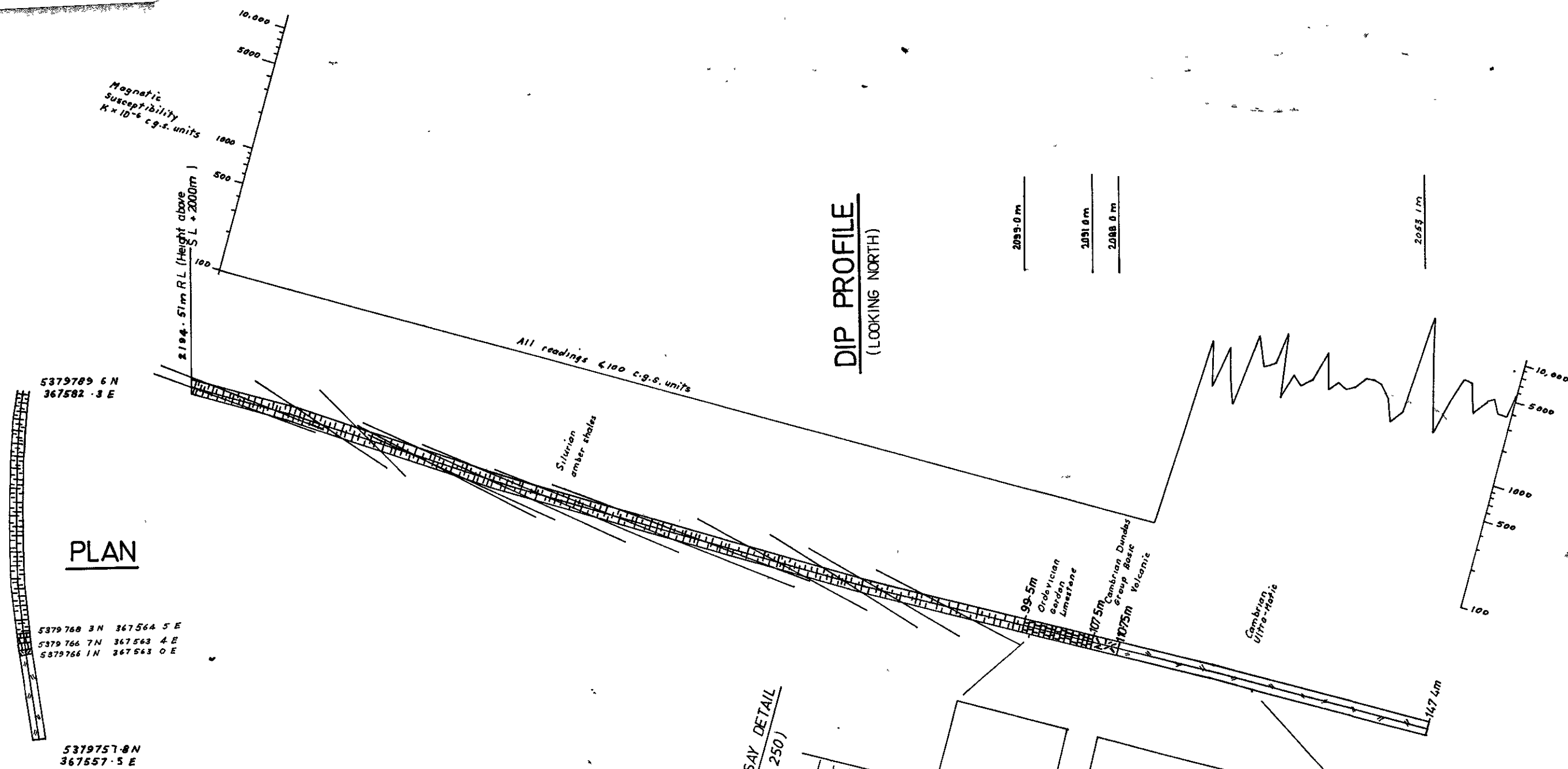
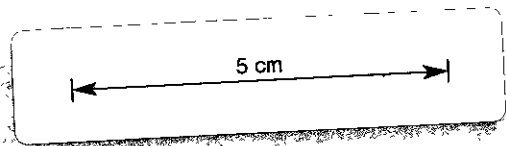
SUMMARY - ASSAY DATA

LODE NAME	FROM	TO	LENGTH (m)	AVERAGE WEIGHTED ASSAYS												B.C.A.
				Sn.	Acid Sol. Sn.	Cu.	As.	S.	Pb.	Zn.	Bi.	WO ₃	Ag g/t	Fe		
MINERALIZED GORDON LIMESTONE	101.9m	102.9	1m	0.02%	90ppm	0.05%	40.1%	1.6%	0.37%	1.57%	50ppm	20ppm	18	8.2%		

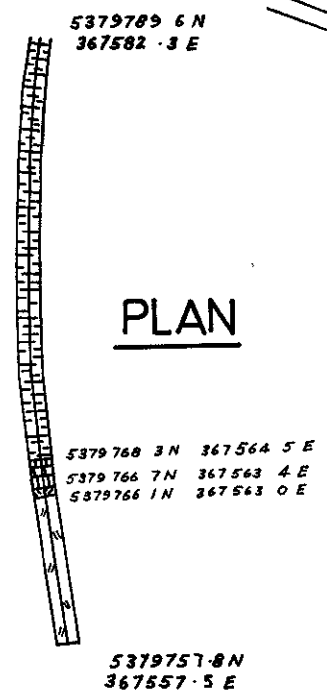
959114



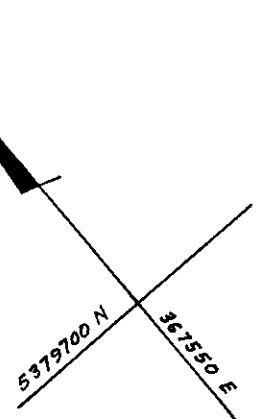
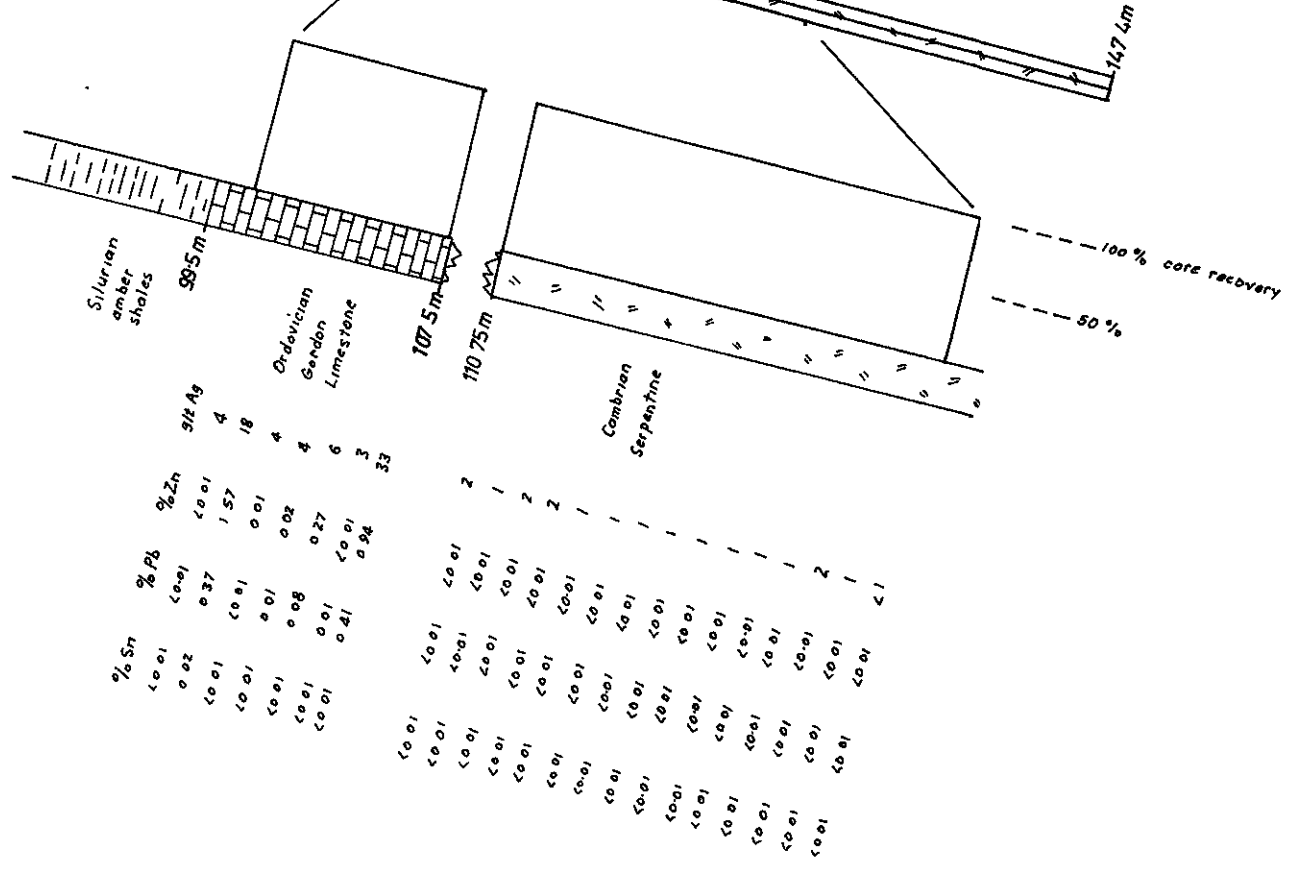
RENISON LIMITED DIAMOND DRILL HOLE PLOT



PLAN



ASSAY DETAIL (1.250)



81-1568
(Vol 1 of 2)

DIAMOND DRILL RECORD

HOLE NUMBER : MB3

LOGGED BY : L. MARTIN

110

KWFS

INTERVAL (m)		RECOVERY		DESCRIPTION	FORM.	% Sn.											
FROM	TO	m	%			FROM	TO	TOTAL	ACID SOL.	% Cu.	% As.	% S.	% Pb.	% Zn.	Ppm Bi.	g/t Ag	% WO ₃
0	0.40	-	-	RUBBLE Mostly cream-coloured friable quartzite with minor grey shale and clay fragments.	-												
0.40	99.50	84.23	85	SHALE Light to medium grey, fine grained shale, with minor silty to fine sandy bands to 4cm width. Core is soft and very broken up and tends to break along bedding planes exposing a variety of fossil moulds; brachiopods ("Rhychonellids", "Leptostrophia"), crinoid ossicles (to 4mm diameter), "Tentaculites", Gastropods, corals and bryozoans. Minor specks of pyrite and sphalerite in fossil cavities or moulds. Core Loss: 90.0 - 96.4m 0.9m recovered 96.4 - 99.4m No core recovered BEDDING READINGS 1.0m 3° 32.0m 5° 6.0m 5° 37.0m 5° 8.4m 4° 38.0m 15° (sandy band) 13.0m 7° 42.0 - 64.0m 5° 15.5m 14° 65.0m 13° 16.0m 16° (sandy band) 70.0m 12° 21.0m 29° 78.0m 17° 22.0m 5° 83.0m 15° 22.0 - 29.0m 7° 90.0m 13° 30.0m 10° Lower boundary with limestone is obscured by core loss.	AMBER SHALE												
99.50	107.50	8.0	100	LIMESTONE BRECCIA Coarse breccia of dark grey to black carbonaceous silty fragments, light grey 'cleaner' limy fragments and calcareous fossil fragments (often coral pieces). Breccia fragments range from 2cm to 10cm. solution lamellae are developed between breccia fragments and have often removed parts of the fragments. There are white calcite veins, from 2-6cm wide cutting the core at 90°-50°. Numerous irregular fine veins occur throughout. MINERALIZATION: 102.11 - 102.18: Zone of sphalerite and minor galena spots and bands, is disrupted by a large white calcite vein or patch with areas of yellow-cream secondary carbonate. 102.40 - 102.77m: Zone of sphalerite, galena and yellow secondary carbonate spots and bands oriented at 39° replacing the limestone. 105.1m: Thin vein (0.5cm wide) of secondary carbonate with minor spots of sphalerite and galena.	GORDON L' STONE	100.9	101.9	<0.01	70	0.03	<0.1	0.4	<0.01	<0.01	60	4	<20
						101.9	102.9	0.02	90	0.05	<0.1	1.6	0.37	1.57	50	18	20
						102.9	103.9	<0.01	4100	0.04	<0.1	0.3	<0.01	0.01	50	4	20
						103.9	104.9	<0.01	<100	0.03	<0.1	0.4	0.01	0.02	50	4	<20
						104.9	105.9	<0.01	<100	0.04	<0.1	0.5	0.08	0.27	50	6	<20
						105.9	106.9	<0.01	<100	0.03	<0.1	0.2	0.01	<0.01	50	3	<20
						106.9	107.4	<0.01	100	0.05	<0.1	0.7	0.41	0.94	50	33	20

959116

111

DIAMOND DRILL RECORD

HOLE NUMBER: ME3

LOGGED BY: L. MARTIN

NW73

INTERVAL (m)		RECOVERY		DESCRIPTION	FORM	% Sn.											
FROM	TO	m	%			FROM	TO	TOTAL	ACID SOL.	% Cu.	% As.	% S.	% Pb.	% Zn.	ppm Bi.	g/t Ag	% WO ₃
				105.3m: Thin slightly irregular vein at 45° filled with chalcopyrite, pyrite and minor galena and sphalerite. Minor specks of pyrite and sphalerite replacing limestone matrix for 4cm above and 10cm below.													
				107.04 - 107.11m: Zone of spots and bands of sphalerite, minor galena, chalcopyrite and yellow secondary carbonate, approx. 4cm wide, at 65° T.C.A. The zone is now brecciated and disrupted by solution lamellae.													
				107.11 - 107.50m: Fine grained sulphide in solution lamellae.													
107.5	110.75	3.25	100	BASIC VOLCANIC	DUNDAS												
				107.5 - 109.95m: Medium to dark greenish, fine grained brecciated volcanic rock with white calcite cement and fine irregular veining. Breccia fragments range from 1cm-8cm, have a slightly blotchy appearance and sometimes have vesicle-like structures, with light calcite rim and dark centre. Upper contact with limestone is irregular, sheared and slightly brecciated at approximately 40° T.C.A.	GROUP												
				109.95 - 110.75m: Above portion grades into zone where breccia fragments are very fine grained to amorphous, and are altered, brownish with very fine cream-coloured veins of silica increasing in abundance towards serpentine contact.													
110.75	147.40			SERPENTINE:		111.0	112.0	<0.01	<100	0.03	<0.1	<0.1	<0.01	<0.01	40	2	20
		0.20	56	110.75 - 111.10m: Dark brown altered fine grained serpentine with numerous fine cream-coloured silica veins; contact is obscured by silica veining and by core loss.		112.0	113.0	<0.01	<100	0.04	<0.1	<0.1	<0.01	<0.01	20	1	<20
						113.0	114.0	<0.01	<100	0.04	<0.1	<0.1	<0.01	<0.01	30	2	20
						114.0	115.0	<0.01	<100	0.03	<0.1	<0.1	<0.01	<0.01	30	2	20
		35.50	98	111.10 - 147.40m: Grades into fresh green mottled serpentine with crystals of chromite sometimes in layers. From approx. 114m - 126m grains of black chromite appear to contain blebs of white to yellowish sulphide, and there are minor amounts of sulphide blebs in the serpentine matrix.		115.0	116.0	<0.01	<100	0.04	<0.1	<0.1	<0.01	<0.01	30	1	20
						116.0	117.0	<0.01	<100	0.04	<0.1	<0.1	<0.01	<0.01	20	1	20
						117.0	118.0	<0.01	<100	0.04	<0.1	<0.1	<0.01	<0.01	20	1	20
						118.0	119.0	<0.01	<100	0.04	<0.1	<0.1	<0.01	<0.01	30	1	20
						119.0	120.0	<0.01	<100	0.04	<0.1	<0.1	<0.01	<0.01	20	1	20
				114.35 - 114.75: Zone of thin dark grey veins of sulphide, 3-4mm wide, offset in places by small faults. Between the veins are blebs of silvery sulphide in apparently fresh unaltered serpentine.		120.0	121.0	<0.01	<100	0.04	<0.1	<0.1	<0.01	<0.01	20	1	20
						121.0	122.0	<0.01	<100	0.04	<0.1	<0.1	<0.01	<0.01	20	1	<20
				118.2m: A dark grey vein, one cm wide, with spots of yellowish sulphide and some grains of brown sphalerite, at 40° T.C.A., occurs in an 8cm wide zone of fine yellowish sulphide blebs in apparently unaltered serpentine.		122.0	123.0	<0.01	<100	0.04	<0.1	<0.1	<0.01	<0.01	20	1	20
						123.0	124.0	<0.01	<100	0.04	<0.1	<0.1	<0.01	<0.01	20	2	20
						124.0	125.0	<0.01	100	0.05	<0.1	<0.1	<0.01	<0.01	20	1	20
						125.0	126.0	<0.01	<100	0.03	<0.1	<0.1	<0.01	<0.01	20	<1	20
				MAGNETIC SUSCEPTIBILITY READINGS (x 10⁻⁶ c.g.s. units):													
				0 - 111m... <100													
				112m... 3400													
				113m... 1400													
				114m... 3100													
				130m... 3500													
				131m... 4000													
				132m... 3800													
				133m... 3000													

959117

RENISON LIMITED
DIAMOND DRILL HOLE PLOT

SCALE:

HOLE No.: MH 3

PETROLOGICAL DESCRIPTION

REPORT CMS 81/3/48

<u>SAMPLE NO.</u>	<u>CLASSIFICATION - COMPOSITION</u>	<u>FABRIC</u>	<u>ACCESSORIES</u>	<u>COMMENTS</u>
102.6m (T.S. 37036)	<u>Ankeritised Pelite/Impure Limestone.</u> Fine-grained ankeritic carbonate with variable relict silty quartz, semi-sericitic muscovite, carbonaceous matter. Locally conspicuous sphalerite (banded).	Relict, locally graded, pelitic bedding. Sporadic ankerite and late cross-cutting calcite veinlets.	Minor traces galena.	Altered pelite, calc-pelite, limestone intercalation. Sphalerite largely as subhedral, zoned crystals (mean 100 u), impregnating mildly ankeritised carbonaceous pelite.
104.1m	<u>Ankeritic Marble/Vein.</u> Microcrystalline ankerite-dolomite with minor relict clastic silty quartz, patchy, closely intergrown secondary quartz, disseminated sphalerite. Vein ankerite with coarse sphalerite.	Faint, weakly brecciated, relict silty clastic fabric. Semi-concordant veins.	Patchy carbonaceous matter. Minor traces galena, cassiterite, late veinlet calcite.	Similar paragenesis to 102.6m, sphalerite similarly zoned/banded. Cassiterite as cloudy microscopic (mean 10 u) particles thinly disseminated through vein/host contact
107.0m	<u>Ankeritic Marble/Calcite Veins.</u> Fine-grained dolomite-ankerite marble (altered carbonaceous calc-pelite) with irregular aggregates sphalerite, galena, conspicuous late veins, veinlets calcite.	Relict, locally brecciated pelitic bedding, locally granulated/calcite-healed sulphide aggregates.	Minor chlorite, relict and secondary quartz. Minor trace pyritised pyrrhotite.	In common with 102.6, 104.1m, represents a relatively (altered) pelitic facies in comparison to the MH 2 zone.
107.9m	<u>Altered Basalt.</u> Felted, albitised plagioclase microlaths with chloritised mesostasis. Frequent irregular to straightwalled calcite veins.	Fine-grained "basaltic" with fine slaggy-microtextured mesostasis.	Minor traces very fine-grained chalcopyrite (marginal to calcite veins).	Close affinities with MH 1/154.2m, but not as distinctly chilled. Can also be correlated with basalt clasts in MH 1/140.3m.
116.5m	<u>Serpentinite.</u> Antigorite with sparse veins, veinlets, of brucite. Disseminated relict primary chromite, extremely fine secondary ("exsolved") magnetite.	Mesh-textured, weakly sheared.	Extremely rare ultrafine sulphide particles, talc flakes.	Relict mesh-textures consistent with peridotite consisting of coarse poikilitic pyroxene, subordinate included olivine.
122.0m	<u>Serpentinite.</u> Antigorite with subordinate cross-fibre chrysotile, minor brucite. Disseminated relict primary chromite, secondary magnetite.	Mesh-textured, incipiently sheared.	Sparse, evenly disseminated very fine "metallic" opaques.	Similar to 116.5m, but with mesh-textures consistent with an even-grained granular dunite.
124.4m (T.S. 37042)	<u>Serpentinite.</u> Antigorite with subordinate chrysotile, minor brucite. Disseminated relict primary chromite, secondary magnetite.	Mesh-textured, incipiently sheared.	Opagues (sim. 122.0m).	Very similar to 122.0m. Primarily a pyroxene dunite (strictly a peridotite). Chromite in 116.5, 122.0, 124.4m relatively dark. Comp. with MH 2.

113

959119