

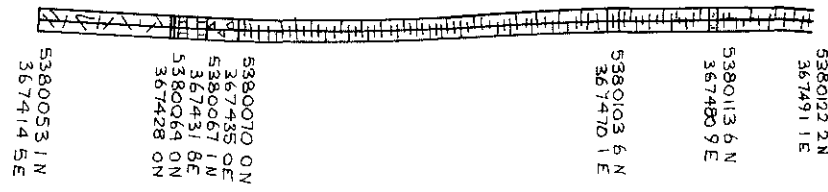
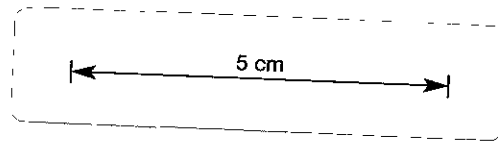
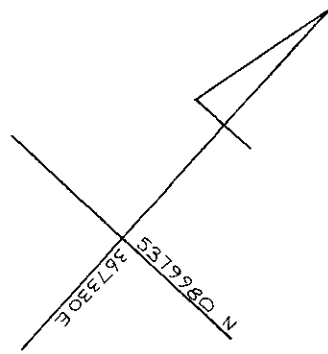
051

HOLE No. MH 7

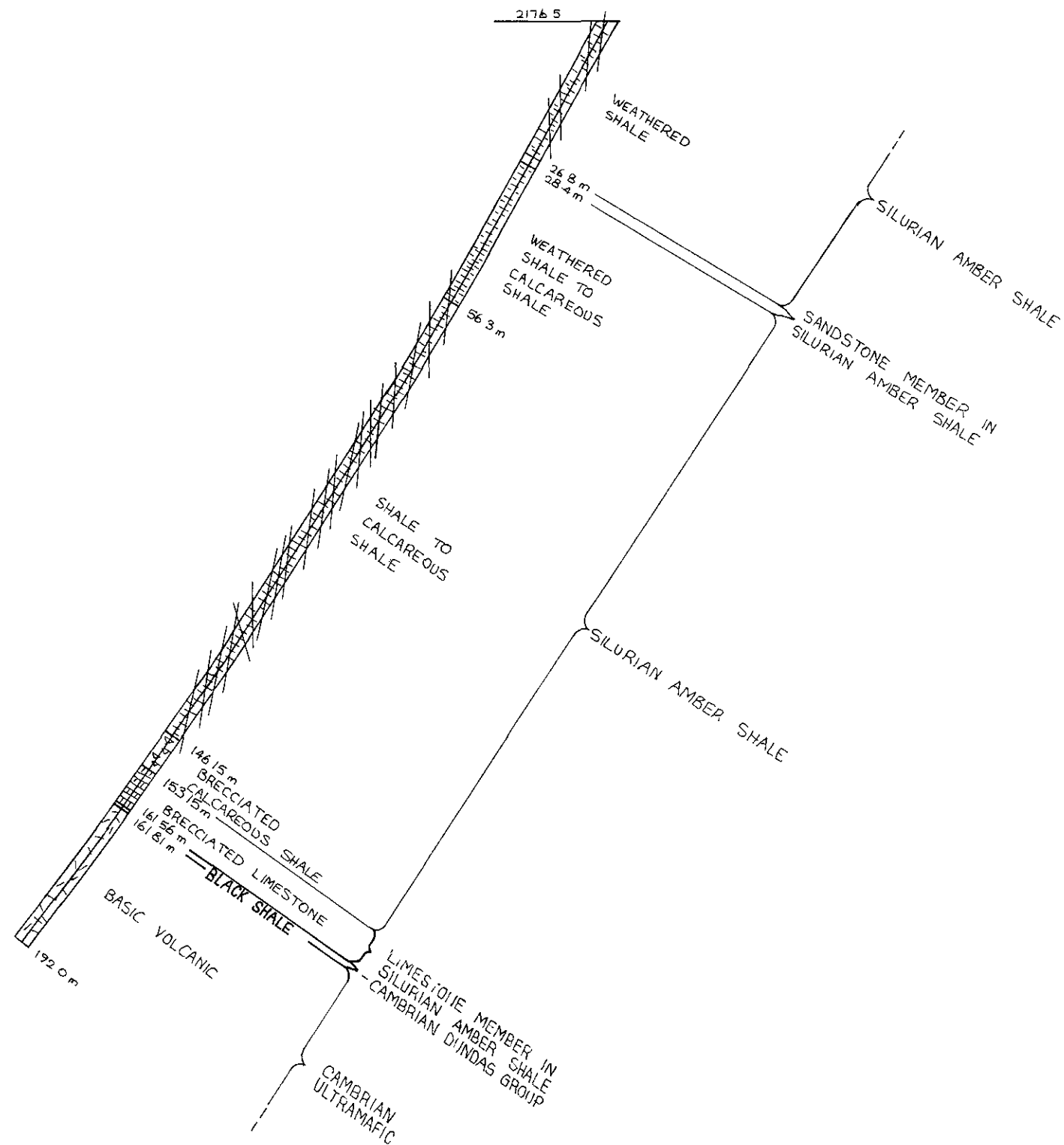


RENISON LIMITED
DIAMOND DRILL HOLE PLOT

785053



- 2152.5
- 2151.2
- 2127.4
- 2051.0
- 2045.0
- 2038.6
- 2038.4
- 2015.0



U52

DIAMOND DRILL RECORD

MOLE NUMBER : ME7
 LOGGED BY : LINDA MARTIN

| INTERVAL (m) | | RECOVERY | | DESCRIPTION | FORM | % Sn. | | | | | | | | | | | |
|--------------|--------|----------|-----|---|--|-------|----|-------|----------|-------|-------|------|-------|-------|-------|--------|-------------------|
| FROM | TO | m | % | | | FROM | TO | TOTAL | ACIDSOL. | % Cu. | % As. | % S. | % Pb. | % Zn. | % Bi. | g/t Ag | % WO ₃ |
| 0 | 1.0 | - | - | Clay | | | | | | | | | | | | | |
| 1.0 | 26.85 | 10.2 | 39 | Shale: Medium brown, weathered crumbly shale. Very broken rubble rock. Well bedded, with cleavage along bedding. Bedding at: 2m - 22° 19m - 22° 7m - 26° 21m - 32° 17m - 31° | SILURIAN AMBER shale | | | | | | | | | | | | |
| 26.85 | 28.40 | 0.7 | 45 | SANDSTONE: Light grey to brown sandstone to quartzite. Medium grained. Broken core with unit boundaries obscured by core loss. | SILURIAN AMBER SANDSTONE MEMBER | | | | | | | | | | | | |
| 28.40 | 153.15 | 7.5 | 26 | SHALE TO CALCAREOUS SHALE 28.40 - 56.3m: Similar to unit at 1.0 - 26.85m. May be calcareous but too weathered to determine. | | | | | | | | | | | | | |
| | | 89.85 | 100 | 56.3m - 146.15m: Fresh medium to light grey shale with cream to light grey more calcareous bands. Well bedded at: 57m - 25° 81m - 26° 114m - 23° 59m - 26° 84m - 32° 117m - 22° 62m - 30° 87m - 29° 122m - 35° 64m - 32° 91m - 21° 125m - 59° 66m - 33° 93m - 23° 127m - 34° 69m - 22° 96m - 29° 129m - 25° 72m - 24° 99m - 25° 133m - 23° 74m - 20° 104m - 25° 136m - 27° 76m - 29° 108m - 22° 141m - 22° 79m - 30° 111m - 28° From 56.7 - 93.8m: A zone of fine irregular calcite-minor ankerite veins with minor wider veins at 25°-35°, up to 5cm wide at 63.85m, 64.2m, 66.4m, 71.0m, 71.25m, 82.93m, 85.15m and 92.45m. The vein at 71.0m is also mineralized with fine patches of sphalerite and galena. | | | | | | | | | | | | | |
| | | 3.15 | 45 | 146.15 - 153.15m: Brecciated zone with recrystallized calcite matrix, and minor irregular calcite-ankerite veining. | | | | | | | | | | | | | |
| 153.15 | 161.56 | 5.23 | 95 | LIMESTONE 153.15 - 158.66m: Brecciated massive, medium grey limestone with stylolites and minor shale bands. Broken core. | AMBER MEMBER SILURIAN | | | | | | | | | | | | |
| | | 2.9 | 100 | 158.66 - 161.56m: Massive medium grey limestone with stylolites. Numerous irregular white calcite veins swelling to 4cm width. | AMBER MEMBER | | | | | | | | | | | | |

785054

053

DIAMOND DRILL RECORD

HOLE NUMBER : MET

LOGGED BY : LINDA MARTIN

HWPS

| INTERVAL (m) | | RECOVERY | | DESCRIPTION | FORM | % Sn. | | | | | | | | | | |
|--------------|--------|----------|-----|---|---|--|----|-------|-----------|-------|-------|------|-------|-------|-------|--------|
| FROM | TO | m | % | | | FROM | TO | TOTAL | ACID SOL. | % Cu. | % As. | % S. | % Pb. | % Zn. | % Bi. | g/t Ag |
| 161.56 | 161.81 | 0.22 | 90 | <p><u>BLACK SHALE:</u></p> <p>Soft, very sheared black shale, with minor white fragments of calcite vein material, incorporated into rock. Upper contact is sheared and slightly irregular at 25°-90°, and is marked by fine veinlets of ankerite and minor patches of reddish sphalerite. Lower contact, is irregular, at 50° and marked by light grey calcite vein.</p> | <p>CANBERRA</p> <p>DUNDAS</p> <p>GROUP</p> | | | | | | | | | | | |
| 161.81 | 192.0 | 30.19 | 100 | <p><u>BASIC VOLCANIC:</u></p> <p>Medium to dark green, fine to medium grained with minor "serpentinized" zones. In places the rock has small vesicle-like structures up to 0.7cm diameter. Minor brecciated zones and minor white calcite veining. Minor specks of pyrrhotite in places.</p> <p>E.O.H.</p> | <p>CANBERRA</p> <p>MULLAL</p> <p>MARLB</p> <p>SAMPLED</p> | | | | | | | | | | | |
| | | | | | | <p>MAGNETIC SUSCEPTIBILITY (x 10⁻⁶ C.G.S. UNITS)</p> <p>0 — 192.0 ... ALL READINGS S. 100</p> | | | | | | | | | | |

785055