



# Borehole log

**ABH-003**

Sheet 1 of 1

<b>Project</b>	Macquarie Point GI	<b>Location</b>	Macquarie Point	<b>Client</b>	MPDC
<b>Coordinates</b>	527533.52mE 5252485.12mN	<b>Drill type</b>	Sonic	<b>Hole started</b>	20/5/24
<b>Datum</b>	GDA2020	<b>Drill rig</b>	MRS XL Max	<b>Hole finished</b>	20/5/24
<b>RL</b>	4.28m AHD	<b>Drill fluid(s)</b>	Water (where indicated)	<b>Drilled by</b>	SWD (G. Bourke)
<b>Inclination</b>	Vertical	<b>Logged by</b>	G. Bremner	<b>Checked by</b>	W. Cromer
<b>Bearing</b>					

Method	Penet. resist	Water	Notes Samples and field tests	metres		Recovery (%)	Graphic log	USCS	Materials Soil type, colour, plasticity or particle characteristics, secondary and minor components	Moisture condition	Consistency Density index	Structure, geology, interpretation, additional observations
				RLm AHD	Depth							
Sonic				4	0.2m	100		SP	Gravelly silty SAND: dark grey	M	MD	Fill (Concrete?)
			ASS 0.5 - 0.6m		0.6m	100		SM	Gravelly SILT: light grey; low plasticity			
					1.0m	100		GC	Clayey sandy GRAVEL: grey; some orange-brown doleritic gravel and clasts to 75mm			
			ASS 1.0 - 1.1m	3	1.4m	100		CH, CL	Sandy gravelly CLAY: dark brown; low-mod plasticity; some brick fragments	M<PL	F	
			ASS 1.5 - 1.6m		1.7m	100		CL	Sandy CLAY: mottled light greenish grey/brown		St	
			ASS 2.0 - 2.1m	2	2.8m	70		CH, CL	Gravelly CLAY: dark brownish grey; some sand and silt; mod-high plasticity; 20% gravel, brick, sandstone to 20mm; occasional dolerite and sandstone clasts to 100mm	M>PL	S - F	
			ASS 2.5 - 2.6m		3.0m	100		CL	Sandy CLAY: dark grey; some gravel			
			ASS 3.0 - 3.1m	1	3.0m	100		CH, CL, loc GC	Sandy gravelly CLAY: dark grey-green with some white travertine? patches near 3.3m; some silt; local clayey sand horizons; variable mod-high plasticity; 10% dolerite clasts to 50mm		F	
			ASS 3.5 - 3.6m		4.0m							
			ASS 4.0 - 4.1m	0	4.5m							
			ASS 4.5 - 4.6m		5.0m							
			ASS 5.0 - 5.1m	-1	5.2m	65		SP	SAND: dark grey; fine-med grained; trace silt and clay; some fine white shell	W	MD	Estuarine sediments
		ASS 5.5 - 5.6m		5.8m								
		SPT R @ 6.0m on rock	-2	6.0m	100		GC	Clayey sandy GRAVEL: dark greenish grey with light green-grey clay patches, light brownish orange 6.5 - 8m; some silt; gravel is doleritic, with well-graded subangular EW-MW dolerite clasts to 100mm; clayey sand interval 8.4 - 8.7m	D - M	D	Colluvial sediments	
				7.0m								
				8.0m								
				8.9m					DOLERITE: grey blue; SW, fractured; high strength			Dolerite bedrock
				9.2m					EOH 9.2mbg			
				10.0m								

**Consistency** (silt, clay, sandy clay, silty clay) VS = Very soft (<25kPa; exudes in fingers when squeezed); S = Soft (25-50kPa; easily penetrated by fist); F = Firm (50-100kPa; easily penetrated by thumb); St = Stiff (100-200kPa; indented by thumb, penetrated with difficulty); VSSt = Very Stiff (200-400kPa; easily penetrated by thumbnail); H = Hard (>400kPa; indented by thumbnail with difficulty); Fb = Friable (crumbles or powders when scraped by thumbnail)  
**Relative density** (sand and gravel) VL = Very loose (ravelling); L = Loose (easy shovelling); MD = Medium dense (hard shovelling); D = Dense (picking); VD = Very dense (hard picking)

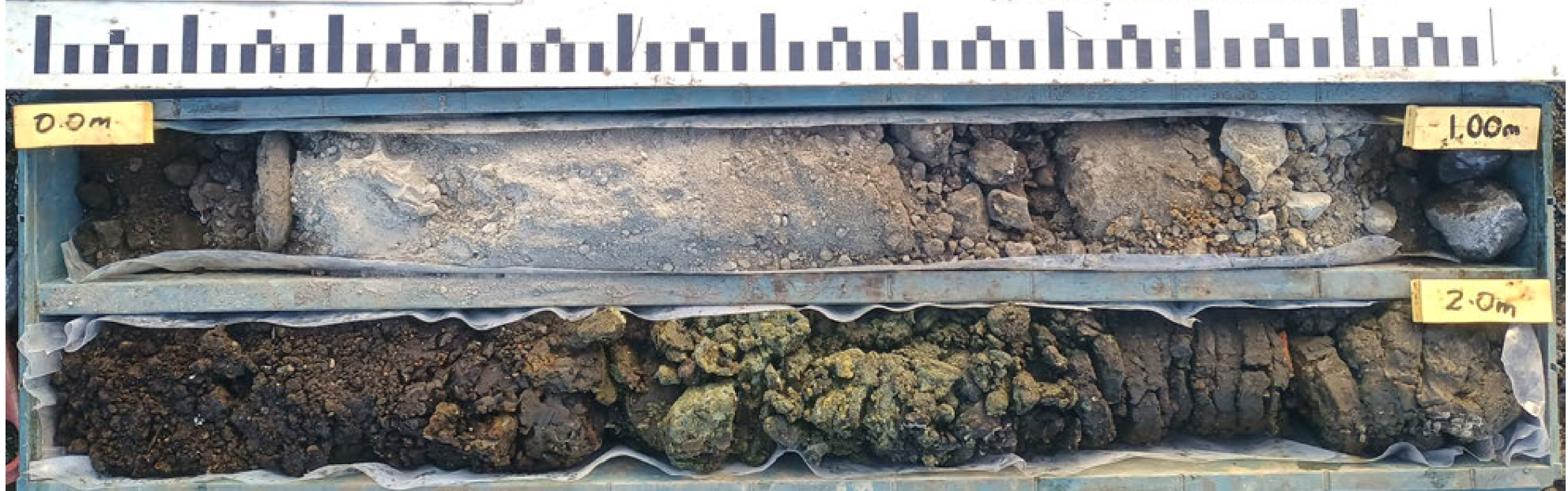
**MAC POINT**  
 Macquarie Point  
 Geotechnical Investigation

WILLIAM C. CROMER P/L

BH ID: ABH003  
 Depth: 0 - 2m  
 Core Tray No.:  
 Date: 20/5/24



X Chalk marks denotes handling breaks



PointID: ABH-003 Depth Range: 0.0 – 2.0 m



TITLE

**MPDC**  
 Macquarie Point  
 Macquarie Point GI  
 Core Photo – ABH-003

DRAWN	WCC	DATE	28/5/24
CHECKED		DATE	
SCALE	Not to Scale		A4
PROJECT No.	PS212776	FIGURE No.	1/5

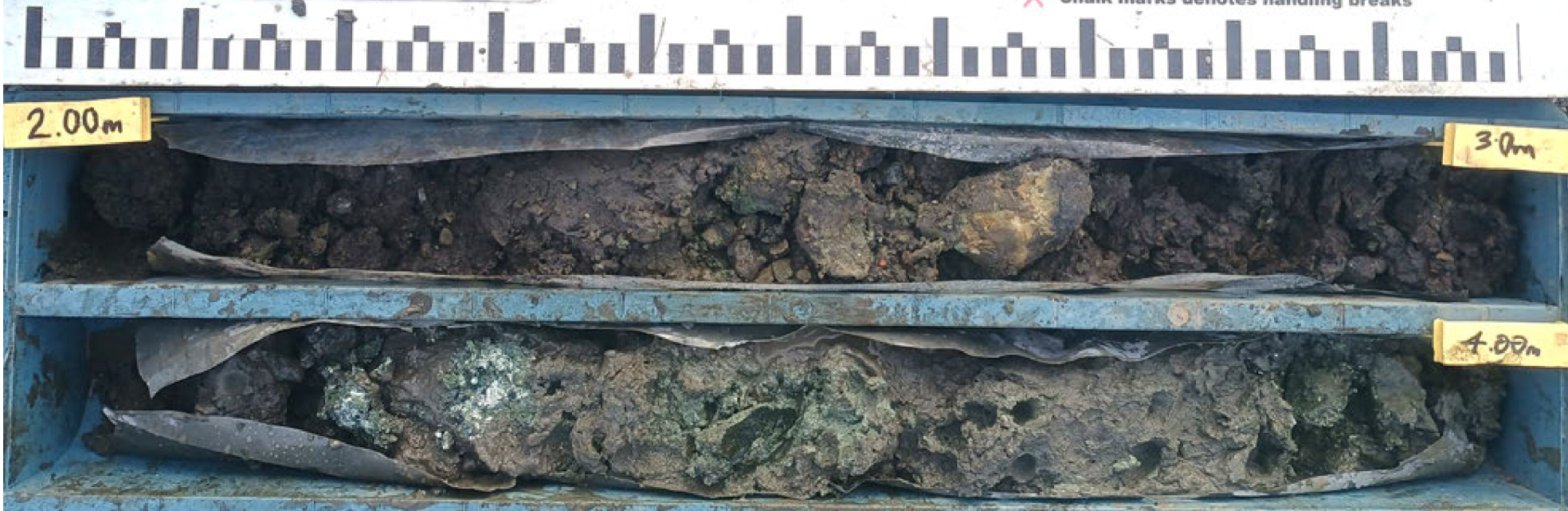
**MAC POINT** Macquarie Point Geotechnical Investigation

WILLIAM C. CROMER P/L

BH ID: ABH003  
 Depth: 2.0 - 4.0m  
 Core Tray No.:  
 Date: 20/5/24



X Chalk marks denotes handling breaks



PointID: ABH-003 Depth Range: 2.0 – 4.0 m



TITLE  
 MPDC  
 Macquarie Point  
 Macquarie Point GI  
 Core Photo – ABH-003

DRAWN	WCC	DATE	28/5/24
CHECKED		DATE	
SCALE	Not to Scale		A4
PROJECT No.	PS212776	FIGURE No.	2/5



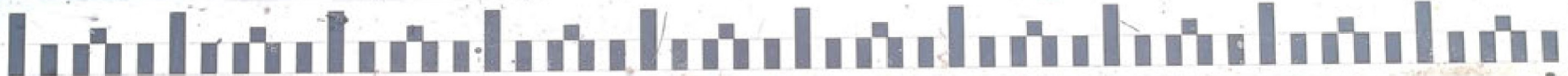
Macquarie Point  
Geotechnical Investigation

WILLIAM C. CROMER P/L

BH ID: ABH003  
Depth: 4 - 6m  
Core Tray No.:  
Date: 20/5/24



X Chalk marks denotes handling breaks



PointID: ABH-003 Depth Range: 4.0 – 6.0 m



TITLE

MPDC  
Macquarie Point  
Macquarie Point GI  
Core Photo – ABH-003

DRAWN

WCC

DATE

28/5/24

CHECKED

DATE

SCALE

Not to Scale

A4

PROJECT No.

PS212776

FIGURE No.

3/5

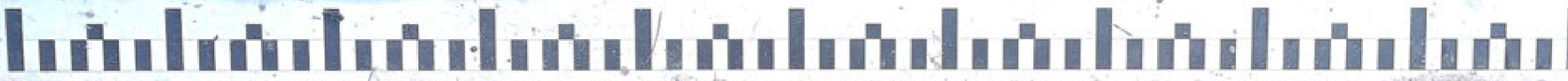
**MAC POINT**  
Macquarie Point  
Geotechnical Investigation

WILLIAM C. CROMER P/L

BH ID: ABH003  
Depth: 6 - 8m  
Core Tray No.:  
Date: 20/5/24



X Chalk marks denotes handling breaks



PointID: ABH-003 Depth Range: 6.0 – 8.0 m



TITLE  
MPDC  
Macquarie Point  
Macquarie Point GI  
Core Photo – ABH-003

DRAWN WCC	DATE 28/5/24
CHECKED	DATE
SCALE Not to Scale	A4
PROJECT No. PS212776	FIGURE No. 4/5



PointID: ABH-003 Depth Range: 8.0 – 9.2 m EOH



TITLE  
 MPDC  
 Macquarie Point  
 Macquarie Point GI  
 Core Photo – ABH-003

DRAWN WCC	DATE 28/5/24
CHECKED	DATE
SCALE Not to Scale	A4
PROJECT No. PS212776	FIGURE No. 5/5