

SOIL LOG SHEET

Client : Department of State Growth
Project : AFL Training Facility and High Performance Centre
Location : Kingston Twin Ovals

LOCATION No. BH_K01

SHEET 1 OF 2

Position : 522941.3 E, 5241884.0 N \ **Surface RL :** 104.70m **Angle from Horiz. :** 90° **Processed :** AOK
Contractor : South Western Drilling **Rig Type :** Comacchio Geo 405 **Checked :** ASH
Date Started : 30 May 24 **Date Completed :** 30 May 24 **Logged by :** OP **Date :** 10 Sep 24

DRILLING				MATERIAL					ADDITIONAL DATA				
SCALE (m)	Method	Hole Support	Run	Water	Depth/ (RL)metres	Graphic Log	Description Soil Name (USC Symbol) Other Minor Components, Plasticity or Particle Characteristics, Colour, Moisture Condition, Consistency, Structure	Group Symbol	Moisture Condition	Consistency / Relative Density	Samples & Tests	Comments/Observations Insitu test results	SCALE (m)
					0.20 (104.50)		TOPSOIL: CLAY, trace gravel, medium plasticity, brown, gravel is fine to medium, subrounded, w<PL	CI	D-M	VSt			
							CLAY, trace gravel, medium plasticity, brown, gravel is fine to medium, subrounded, w<PL, [Tcbu]	CI	D-M	H			
					0.60 (104.10)		SILT with sand, high plasticity, orange, sand is fine to coarse grained, spotted black, white and orange, w<PL [RS/XW Tbat]	MH	D-M	VSt	U63	U63 (0.5 - 0.9m)	
1							Sandy CLAY, trace gravel, high plasticity, orange-brown with black mottling, sand is fine to coarse grained, gravel is fine, subrounded, friable [RS/XW Tbat]	CH	M	H	PP SPT	PP @ 0.9m = 350 kPa (UCS) SPT @ 0.9m = 3/6/10, N = 16 Recovery = 150mm	1
					1.90 (102.80)						U63	U63 (1.5 - 1.9m)	
					3.00 (101.70)		gravel is fine to medium, white, fissured				U63	U63 (3.0 - 3.4m)	
							trace black gravel				PP SPT	PP @ 3.4m = >600 kPa (UCS) SPT @ 3.4m = 6/14/22, N = 36 Recovery = 400mm	
					4.90 (99.80)						U63	U63 (4.5 - 4.9m)	
											PP SPT	PP @ 4.9m = >600 kPa (UCS) SPT @ 4.9m = 5/17/26, N = 43 Recovery = 400mm	

Solid Flight Auger

GEO SOIL BOREHOLE LOG SHEET 12626209.GPJ GHD_GEO_TEMPLATE_TASMANIA.GDT 12/9/24

See standard sheets for details of abbreviations & basis of descriptions



Job No.
12626209

SOIL LOG SHEET

Client : Department of State Growth
Project : AFL Training Facility and High Performance Centre
Location : Kingston Twin Ovals

LOCATION No. BH_K01

SHEET 2 OF 2

Position : 522941.3 E, 5241884.0 N \ **Surface RL :** 104.70m **Angle from Horiz. :** 90° **Processed :** AOK
Contractor : South Western Drilling **Rig Type :** Comacchio Geo 405 **Checked :** ASH
Date Started : 30 May 24 **Date Completed :** 30 May 24 **Logged by :** OP **Date :** 10 Sep 24

DRILLING					MATERIAL					ADDITIONAL DATA				
SCALE (m)	Method	Hole Support	Run	Water	Depth/ (RL)metres	Graphic Log	Description Soil Name (USC Symbol) Other Minor Components, Plasticity or Particle Characteristics, Colour, Moisture Condition, Consistency, Structure	Group Symbol	Moisture Condition	Consistency / Relative Density	Samples & Tests	Comments/Observations Insitu test results	SCALE (m)	
	Solid Flight Auger				5.50 (99.20)		Becoming brown, [Possibly Tbat]		M	H				
6											SPT	SPT @ 6.0m = 12/19/26, N = 45 Recovery = 450mm	6	
7						7.50 (97.20)		Becoming orange-brown		D-M			SPT @ 7.5m = 10/21/30*, N = R after 400mm Recovery = 400mm	7
8											7.5		8	
					8.50		Start of coring at 8.5 metres. See Core Log Sheet for cored interval.							
9													9	
10													10	

GEO SOIL BOREHOLE LOG SHEET_12626209.GPJ_GHD_GEO_TEMPLATE_TASMANIA.GDT_12/9/24

See standard sheets for details of abbreviations & basis of descriptions



Job No.
12626209

CORE LOG SHEET

Client : Department of State Growth
Project : AFL Training Facility and High Performance Centre
Location : Kingston Twin Ovals

LOCATION No. BH_K01

SHEET 1 OF 2

Position : 522941.3 E, 5241884.0 N \ **Surface RL :** 104.70m **Angle from Horiz. :** 90° **Processed :** AOK
Contractor : South Western Drilling **Rig Type :** Comacchio Geo 405 **Checked :** ASH
Date Started : 30 May 24 **Date Completed :** 30 May 24 **Logged by :** OP **Date :** 10 Sep 24

DRILLING				MATERIAL						ADDITIONAL DATA				
SCALE (m)	Method	Run	Water	Depth/ (RL)metres	Graphic Log	Description ROCK TYPE, colour, grain size, structure (texture, mineral composition, hardness, alteration, cementation, etc. as applicable) and SOIL TYPE, colour, structure, minor components (origin)	Weathering	Estimated Strength	Core Recovery (%) 20 80	RQD (%) 20 40 100 300 1000	Defect Spacing (mm)	Samples & Tests	Additional Data Joints, partings, seams, zones and veins Fracture type, orientation, infilling or coating, shape, roughness, other Insitu test results	SCALE (m)
6														6
7														7
8														8
9	HQ Coring	1		8.50 (96.20)		Start of coring at 8.5 metres. See Soil Log Sheet for soil interval. Auger refusal @ 8.5m, switch to HQ coring CORE LOSS = 600mm							8.5m: Auger Grinding	9
		2		9.10 (95.60)		Boulder, SW, VH strength dolerite, blue-grey [Possibly Tcbu]								
				9.70 (95.00)		Sandy CLAY, trace gravel, high plasticity, orange-brown, sand is fine to coarse grained, gravel is fine to medium, subrounded, black mottling, hard, friable [Possibly Tcbu]							9.65m: Fissure, 60°, Pln, Fe Sn	10

GEO CORE LOG SHEET 12626209.GPJ_GHD_GEO_TEMPLATE_TASMANIA.GDT 12/9/24

See standard sheets for details of abbreviations & basis of descriptions



Job No.
12626209

CORE LOG SHEET

Client : Department of State Growth Project : AFL Training Facility and High Performance Centre Location : Kingston Twin Ovals	LOCATION No. BH_K01 SHEET 2 OF 2		
Position : 522941.3 E, 5241884.0 N \	Surface RL : 104.70m	Angle from Horiz. : 90°	Processed : AOK
Contractor : South Western Drilling	Rig Type : Comacchio Geo 405	Checked : ASH	
Date Started : 30 May 24	Date Completed : 30 May 24	Logged by : OP	Date : 10 Sep 24

DRILLING				MATERIAL						ADDITIONAL DATA						
SCALE (m)	Method	Run	Water	Depth/ (RL)metres	Graphic Log	Description ROCK TYPE, colour, grain size, structure (texture, mineral composition, hardness, alteration, cementation, etc. as applicable) and SOIL TYPE, colour, structure, minor components (origin)	Weathering	Estimated Strength	Core Recovery (%)		RQD (%)	Defect Spacing (mm)	Samples & Tests	Additional Data Joints, partings, seams, zones and veins Fracture type, orientation, infilling or coating, shape, roughness, other Insitu test results	SCALE (m)	
									20	80						20
	HQ Coring	3		10.45 (94.25)		EOH at 10.45m - target Depth reached. Standpipe installed on completion End of hole at 10.5 metres.			100				SPT	SPT @ 10m = 16/18/20, N=38 Recovery = 450mm		
11														Standpipe Construction Details (mBGL): 0.0 - 0.3m: Gatic cover and concrete plug 0.3 - 6.0m: Backfill 6.0 - 6.5m: Bentonite Plug 6.5 - 10.0m: Sand 7.0 - 10.0m: Screen	11	
12																12
13																13
14																14
15																15

GEO CORE LOG SHEET 12626209.GPJ GHD_GEO_TEMPLATE_TASMANIA.GDT 12/9/24

See standard sheets for details of abbreviations & basis of descriptions



Job No.
12626209

SPT1 (0.9 - 1.35), N* = 16, 150 mm recovered



SPT2 (1.9 - 2.35), N* = 33, 380 mm recovered



SPT3 (3.4 - 3.85), N* = 36, 400 mm recovered



SPT4 (4.9 - 5.35), N* = 43, 400 mm recovered



SPT5 (6 - 6.45), N* = 45, 450 mm recovered



GHD Pty Ltd

2 Salamanca Square Hobart TAS 7000

Job Number

12626209

A4

Title

Kingston

Client

Department of State Growth

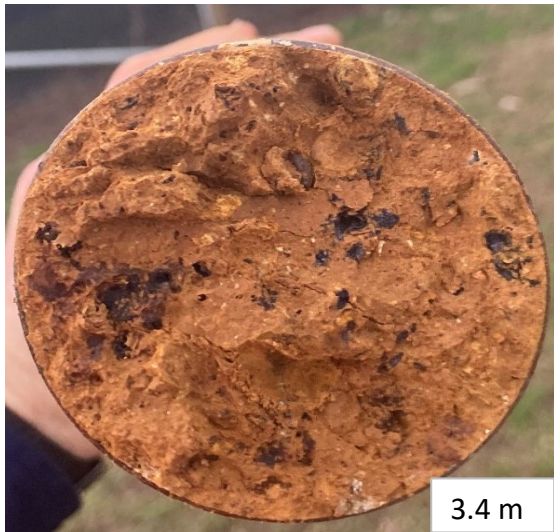
BH_K01

Photographic Record

SPT6 (7.5 - 7.9), N* = R, 400 mm recovered



SPT7 (10 - 10.45), N* = 38, 400 mm recovered



3.4 m



5.35 m

GHD GHD Pty Ltd
2 Salamanca Square Hobart TAS 7000

Job Number 12626209	Title A4	Kingston	Client Department of State Growth
BH_K01		Photographic Record	


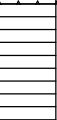
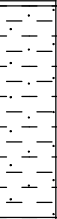
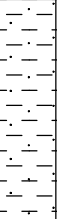
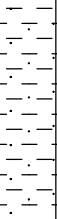
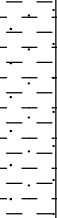
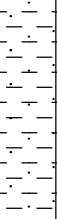
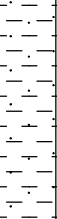
SOIL LOG SHEET

Client : Department of State Growth
Project : AFL Training Facility and High Performance Centre
Location : Kingston Twin Ovals

LOCATION No. BH_K02

SHEET 1 OF 3

Position : 523001.0 E, 5241948.2 N \ **Surface RL :** 108.50m **Angle from Horiz. :** 90° **Processed :** AOK
Contractor : South Western Drilling **Rig Type :** Comacchio Geo 405 **Checked :** ASH
Date Started : 30 May 24 **Date Completed :** 30 May 24 **Logged by :** OP **Date :** 10 Sep 24

DRILLING				MATERIAL					ADDITIONAL DATA				
SCALE (m)	Method	Hole Support	Run	Water	Depth / (RL) metres	Graphic Log	Description Soil Name (USC Symbol) Other Minor Components, Plasticity or Particle Characteristics, Colour, Moisture Condition, Consistency, Structure	Group Symbol	Moisture Condition	Consistency / Relative Density	Samples & Tests	Comments/Observations Insitu test results	SCALE (m)
					0.20 (108.30)		TOPSOIL: CLAY, trace sand, gravel and cobbles, medium plasticity, brown, sand is coarse grained, gravel is fine to coarse, angular to subangular, cobbles are angular, dolerite, rootlets, w<PL	CI	D-M	H	PP	PP @ 0.1m = >600 kPa (UCS)	
					0.60 (107.90)		CLAY, trace sand, gravel and cobbles, medium plasticity, brown, sand is coarse grained, gravel is fine to coarse, angular to subangular, cobbles are angular, dolerite, w<PL [Tcbu]	CI	D-M	H	U63	U63 (0.5 - 0.9m)	Cobble making it difficult to auger
1					1.30 (107.20)		SILT, trace sand and gravel, high plasticity, orange, sand is fine to coarse grained, gravel is fine, spotted to mottled black, white and orange, fissured, w~PL [RS/XW Tbat]	MH	M	VSt	PP SPT	PP @ 0.9m = 440 kPa (UCS) SPT @ 0.9m = 4/7/8, N = 15 Recovery = 50mm	
							Sandy SILT, trace gravel, orange-brown, mottled black, high plasticity, sand is fine to coarse grained, gravel is fine, friable [RS/XW Tbat]	MH	M	VSt- H	U63	U63 (1.35 - 1.8m)	
2										H	PP SPT	PP @ 1.8m = >600 kPa (UCS) SPT @ 1.8m = 6/13/20, N = 33 Recovery = 350mm	
3											SPT	SPT @ 3.0m = 15/21/30, N = 51 Recovery = 450mm	
4											SPT	SPT @ 4.5m = 8/24/16*, N = R after 370mm Recovery = 370mm	
5													

Solid Flight Auger

GEO SOIL BOREHOLE LOG SHEET 12626209.GPJ GHD_GEO_TEMPLATE_TASMANIA.GDT 13/9/24

See standard sheets for details of abbreviations & basis of descriptions



Job No.
12626209

SOIL LOG SHEET

Client : Department of State Growth
Project : AFL Training Facility and High Performance Centre
Location : Kingston Twin Ovals

LOCATION No. BH_K02

SHEET 2 OF 3

Position : 523001.0 E, 5241948.2 N \ **Surface RL :** 108.50m **Angle from Horiz. :** 90° **Processed :** AOK
Contractor : South Western Drilling **Rig Type :** Comacchio Geo 405 **Checked :** ASH
Date Started : 30 May 24 **Date Completed :** 30 May 24 **Logged by :** OP **Date :** 10 Sep 24

DRILLING				MATERIAL					ADDITIONAL DATA				
SCALE (m)	Method	Hole Support	Run	Water	Depth/ (RL)metres	Graphic Log	Description Soil Name (USC Symbol) Other Minor Components, Plasticity or Particle Characteristics, Colour, Moisture Condition, Consistency, Structure	Group Symbol	Moisture Condition	Consistency / Relative Density	Samples & Tests	Comments/Observations Insitu test results	SCALE (m)
	Solid Flight Auger				6.00 (102.50)		Spotted black and grey		M	Vst- H		5.5m: Auger grinding - punched through SPT @ 6.0m = 15/20/16, N = 36 Recovery = 450mm Spots are possibly remnant crystals	6
					9.00 (99.50)		SILT, trace gravel, high plasticity, red-brown, friable, gravel is fine, subrounded, black, [RS/XW Tbat]	MH	M	H	SPT	SPT @ 9.0m = 9/27/30*, N = R after 400mm Recovery = 400mm	9
					9.50 (99.00)		trace coarse gravel, black, low strength, round to subrounded	MH				U63 U63 (7.5 - 7.9m) PP PP @ 7.9m = >600 kPa (UCS)	8
					9.70 (98.80)		Sandy CLAY, trace gravel, medium plasticity, brown, sand is fine to coarse grained, gravel is fine, subangular, [RS/XW Tbat]	CI	M	H			10

GEO SOIL BOREHOLE LOG SHEET_12626209.GPJ_GHD_GEO_TEMPLATE_TASMANIA.GDT 13/9/24

See standard sheets for details of abbreviations & basis of descriptions



Job No.
12626209

SOIL LOG SHEET

Client : Department of State Growth
Project : AFL Training Facility and High Performance Centre
Location : Kingston Twin Ovals

LOCATION No. BH_K02

SHEET 3 OF 3

Position : 523001.0 E, 5241948.2 N \ **Surface RL :** 108.50m **Angle from Horiz. :** 90° **Processed :** AOK
Contractor : South Western Drilling **Rig Type :** Comacchio Geo 405 **Checked :** ASH
Date Started : 30 May 24 **Date Completed :** 30 May 24 **Logged by :** OP **Date :** 10 Sep 24

DRILLING				MATERIAL					ADDITIONAL DATA				
SCALE (m)	Method	Hole Support	Run	Water	Depth/ (RL)metres	Graphic Log	Description Soil Name (USC Symbol) Other Minor Components, Plasticity or Particle Characteristics, Colour, Moisture Condition, Consistency, Structure	Group Symbol	Moisture Condition	Consistency / Relative Density	Samples & Tests	Comments/Observations Insitu test results	SCALE (m)
	Solid Flight Auger				10.60 (97.90)		SILT with sand, trace gravel, high plasticity, dark-brown, friable, sand is fine to coarse grained, gravel is fine, round, low strength, pale grey, brown, [RS/XW Tbat]	MH	D-M	H	SPT	SPT @ 10.5m = 11/35/32*, N = R after 400mm Recovery = 400mm	
11					11.00 (97.50)		EOH @ 11.0m - Target Depth reached. Standpipe installed upon completion					Standpipe Construction Details (mBGL): 0.0 - 0.3m: Gatic cover and concrete plug 0.3 - 6.0m: Backfill 6.0 - 6.5m: Bentonite Plug 6.5 - 10.0m: Sand 7.0 - 10.0m: Screen (Cave in - well installed at 10.0 mBGL)	11
12													12
13													13
14													14
15													15

GEO SOIL BOREHOLE LOG SHEET_12626209.GPJ_GHD_GEO_TEMPLATE_TASMANIA.GDT_13/9/24

See standard sheets for details of abbreviations & basis of descriptions



Job No.
12626209

SPT1 (0.9 - 1.35), N* = 15, 150 mm recovered



SPT2 (1.8 - 2.35), N* = 33, 350 mm recovered



SPT3 (3.0 - 3.45), N* = 51, 450 mm recovered




SPT4 (4.5 - 4.87), N* = R, 370 mm recovered



SPT5 (6.0 - 6.45), N* = 36, 450 mm recovered



	GHD Pty Ltd
	2 Salamanca Square Hobart TAS 7000

Job Number 12626209	A4	Title Kingston	Client Department of State Growth
BH_K02		Photographic Record	

SPT6 (9.0 - 9.40), N* = R, 400 mm recovered



SPT7 (10.5 - 10.9), N* = R, 400 mm recovered



	GHD Pty Ltd 2 Salamanca Square Hobart TAS 7000
---	---

Job Number 12626209	A4	Title Kingston	Client Department of State Growth
BH_K02		Photographic Record	

SOIL LOG SHEET

Client : Department of State Growth
Project : AFL Training Facility and High Performance Centre
Location : Kingston Twin Ovals

LOCATION No. BH_K03

SHEET 1 OF 3

Position : 523341.3 E, 5241980.5 N \ **Surface RL :** 88.70m **Angle from Horiz. :** 90° **Processed :** AOK
Contractor : South Western Drilling **Rig Type :** Comacchio Geo 405 **Checked :** ASH
Date Started : 11 Jun 24 **Date Completed :** 11 Jun 24 **Logged by :** OP **Date :** 10 Sep 24

DRILLING				MATERIAL					ADDITIONAL DATA				
SCALE (m)	Method	Hole Support	Run	Water	Depth/ (RL)metres	Graphic Log	Description Soil Name (USC Symbol) Other Minor Components, Plasticity or Particle Characteristics, Colour, Moisture Condition, Consistency, Structure	Group Symbol	Moisture Condition	Consistency / Relative Density	Samples & Tests	Comments/Observations Insitu test results	SCALE (m)
					0.20 (88.50)		TOPSOIL: CLAY with sand, low plasticity, dark-brown, sand is fine to medium grained, w<PL	CL	D	St			
							CLAY with sand, low plasticity, dark-brown, sand is fine to medium grained, w<PL [Upper Tcbu]	CL	D	St			
					0.70 (88.00)		trace sand, brown, high plasticity, sand is fine grained, w=PL	CH	M	VSt		U63	U63 (0.5 - 0.9m)
1					1.10 (87.60)		Sandy CLAY, high plasticity, orange mottled brown, sand is fine to medium grained, black, occasionally cream, w-PL [RS/XW Tbat]	CH	D	VSt	PP SPT	PP @ 0.9m = 200kPa SPT @ 0.9m: 4/6/10, N=16 Recovery = 400mm	1
												U63	U63 (1.5 - 1.9m)
2										VSt- H	PP SPT	PP @ 1.9m = >600kPa (UCS) SPT @ 1.9m: 6/10/12, N=22 Recovery = 450mm	2
					3.00 (85.70)		w>PL			D-M	H	U63	U63 (3.0 - 3.4m)
												PP SPT	PP @ 3.4m = >600kPa (UCS) SPT @ 3.4m: 8/15/19, N=34 Recovery = 450mm
3												U63	U63 (3.0 - 3.4m)
4					4.50 (84.20)		Sand becoming fine to coarse grained, black, occasional cream and orange					U63	4.5m: U63 struggling to penetrate U63 (4.5 - 4.7m)
												PP SPT	PP @ 4.7m = >600kPa (UCS) SPT @ 4.7m: 10/15/23, N=38 Recovery = 450mm
5													

Solid Flight Auger

GEO SOIL BOREHOLE LOG SHEET_12626209.GPJ_GHD_GEO_TEMPLATE_TASMANIA.GDT 12/9/24

See standard sheets for details of abbreviations & basis of descriptions



Job No.
12626209

SOIL LOG SHEET

Client : Department of State Growth
Project : AFL Training Facility and High Performance Centre
Location : Kingston Twin Ovals

LOCATION No. BH_K03

SHEET 2 OF 3

Position : 523341.3 E, 5241980.5 N \ **Surface RL :** 88.70m **Angle from Horiz. :** 90° **Processed :** AOK

Contractor : South Western Drilling **Rig Type :** Comacchio Geo 405 **Checked :** ASH

Date Started : 11 Jun 24 **Date Completed :** 11 Jun 24 **Logged by :** OP **Date :** 10 Sep 24

DRILLING				MATERIAL					ADDITIONAL DATA				
SCALE (m)	Method	Hole Support	Run	Water	Depth/ (RL)metres	Graphic Log	Description Soil Name (USC Symbol) Other Minor Components, Plasticity or Particle Characteristics, Colour, Moisture Condition, Consistency, Structure	Group Symbol	Moisture Condition	Consistency / Relative Density	Samples & Tests	Comments/Observations In situ test results	SCALE (m)
6	Solid Flight Auger				6.00 (82.70)		trace cobble, orange mottled cream, w-PL		D	VSt	U63 SPT	U63 (6.0-6.1m): Refusal on inferred cobble - bent tube SPT @ 6.1m = 20*/-/-, N = R after 75mm Recovery = 75mm Auger struggling to penetrate	6
7					7.50 (81.20)		orange-brown, sand grains are black, cream, orange, w>PL		D-M	H	U63	U63 (7.5-7.78m)	7
8						9.45 (79.25)		Coarse gravel clasts of dark grey, breaks down to sand [XW material]				PP SPT	PP @ 7.78m = >600 kPa (UCS) SPT @ 7.8m: 15/29/30, N=59 Recovery = 450mm U63 (9.0-9.3m) PP @ 9.3m = 600kPa (UCS) SPT @ 9.3m = 30*/-/-, N = R after 150mm Recovery = 150mm
9													9
10													10

GEO SOIL BOREHOLE LOG SHEET_12626209.GPJ_GHD_GEO_TEMPLATE_TASMANIA.GDT_12/9/24

See standard sheets for details of abbreviations & basis of descriptions



Job No.
12626209

SOIL LOG SHEET

Client : Department of State Growth
Project : AFL Training Facility and High Performance Centre
Location : Kingston Twin Ovals

LOCATION No. BH_K03

SHEET 3 OF 3

Position : 523341.3 E, 5241980.5 N \ **Surface RL :** 88.70m **Angle from Horiz. :** 90° **Processed :** AOK

Contractor : South Western Drilling **Rig Type :** Comacchio Geo 405 **Checked :** ASH

Date Started : 11 Jun 24 **Date Completed :** 11 Jun 24 **Logged by :** OP **Date :** 10 Sep 24

DRILLING					MATERIAL				ADDITIONAL DATA				
SCALE (m)	Method	Hole Support	Run	Water	Depth/ (RL)metres	Graphic Log	Description Soil Name (USC Symbol) Other Minor Components, Plasticity or Particle Characteristics, Colour, Moisture Condition, Consistency, Structure	Group Symbol	Moisture Condition	Consistency / Relative Density	Samples & Tests	Comments/Observations Insitu test results	SCALE (m)
11	Solid Flight Auger								D	VSt	U63	U63 (10.5 - 10.75)	11
12											PP SPT	PP @ 10.75m = >600kPa (UCS) SPT @ 10.75m = 13/22/24, N=46 Recovery = 450mm	12
13					12.45 (76.25)		EOH @ 12.45m - Target depth reached. Standpipe installed upon completion					Standpipe Construction Details (mBGL): 0.0 - 0.3m: Gatic cover and concrete plug 0.3 - 8.0m: Backfill 8.0 - 8.5m: Bentonite Plug 8.5 - 12.0m: Sand 9.0 - 12.0m: Screen	13
14													14
15													15

GEO SOIL BOREHOLE LOG SHEET_12626209.GPJ_GHD_GEO_TEMPLATE_TASMANIA.GDT_12/9/24

See standard sheets for details of abbreviations & basis of descriptions



Job No.
12626209

SPT1 (0.9 - 1.35), N* = 16, 400 mm recovered



SPT2 (1.5 - 1.9), N* = 22, 450 mm recovered



SPT3 (3.4 - 3.85), N* = 33, 350 mm recovered



SPT4 (4.7 - 5.15), N* = 38, 450 mm recovered



GHD Pty Ltd

2 Salamance Square Hobart TAS 7000

Job Number 12626209	A4	Title Kingston	Client GHD Pty Ltd 2 Salamance Square Hobart TAS 7000
BH_K03		Photographic Record	Department of State Growth

SPT5 (6.1 - 6.2), N* = R, 75 mm recovered



SPT6 (7.78 - 8.23), N* = 36, 450 mm recovered



SPT7 (9.3 - 9.45), N* = R, 150 mm recovered



SPT8 (10.75 - 11.2), N* = 46, 450 mm recovered



SPT9 (12.0 - 12.45), N* = 37, 450 mm recovered



GHD Pty Ltd

2 Salamance Square Hobart TAS 7000

Job Number

12626209

A4

Title

Kingston

Client

Department of State Growth

BH_K03

Photographic Record

SOIL LOG SHEET

Client : Department of State Growth
Project : AFL Training Facility and High Performance Centre
Location : Kingston Twin Ovals

LOCATION No. BH_K04

SHEET 1 OF 1

Position : 523224.9 E, 5241980.1 N \ **Surface RL :** 98.30m **Angle from Horiz. :** 90° **Processed :** JP
Contractor : South Western Drilling **Rig Type :** Comacchio Geo 405 **Checked :** ASH
Date Started : 3 Jun 24 **Date Completed :** 3 Jun 24 **Logged by :** OP **Date :** 10 Sep 24

DRILLING				MATERIAL					ADDITIONAL DATA					
SCALE (m)	Method	Hole Support	Run	Water	Depth/ (RL)metres	Graphic Log	Description Soil Name (USC Symbol) Other Minor Components, Plasticity or Particle Characteristics, Colour, Moisture Condition, Consistency, Structure	Group Symbol	Moisture Condition	Consistency / Relative Density	Samples & Tests	Comments/Observations Insitu test results	SCALE (m)	
	Auger screwing		Run 1		0.30 (98.00)		TOPSOIL: Sandy SILT, trace gravel, high plasticity, brown, sand is fine to coarse grained, gravel is coarse, angular, w<PL	MH	D	St				
					0.85 (97.45)		CLAY with sand, medium plasticity, brown, mottled orange, sand is fine grained, w~PL, [Upper Tcbu]	CI	M-D	VSt	U63	U63 (0.5 - 0.9m)		
1					2.80 (95.50)		Sandy CLAY, trace gravel, high plasticity, orange-brown, sand is fine to coarse grained, gravel is fine, subangular to subrounded, w~PL, [RS/XW Tbat]	CH	M-D	VSt	PP SPT	PP @ 0.9m = 450 kPa (UCS) SPT @ 0.9m: 8/11/13, N=24 Recovery = 450 mm	U63	U63 (1.5 - 1.9)
2													2	
3							Auger refusal on inferred cobble					Borehole moved northeast. Refer to BHK04A	3	
4													4	
5													5	

GEO SOIL BOREHOLE LOG SHEET_12626209.GPJ_GHD_GEO_TEMPLATE_TASMANIA.GDT_13/9/24

See standard sheets for details of abbreviations & basis of descriptions



Job No.
12626209

SPT1 (0.9 - 1.35), N* = 24, 450 mm recovered



SPT2 (1.9 - 2.35), N* = 25, 450 mm recovered



				GHD Pty Ltd 2 Salamanca Square Hobart TAS 7000
Job Number 12626209	A4	Title Kingston	Client Department of State Growth	
BH_K04		Photographic Record		

SOIL LOG SHEET

Client : Department of State Growth
Project : AFL Training Facility and High Performance Centre
Location : Kingston Twin Ovals

LOCATION No. BH_K04A

SHEET 1 OF 1

Position : 523226.0 E, 5241983.0 N \ **Surface RL :** 98.30m **Angle from Horiz. :** 90° **Processed :** JP
Contractor : South Western Drilling **Rig Type :** Comacchio Geo 405 **Checked :** ASH
Date Started : 3 Jun 24 **Date Completed :** 4 Jun 24 **Logged by :** OP **Date :** 10 Sep 24

DRILLING				MATERIAL					ADDITIONAL DATA				
SCALE (m)	Method	Hole Support	Run	Water	Depth/ (RL)metres	Graphic Log	Description Soil Name (USC Symbol) Other Minor Components, Plasticity or Particle Characteristics, Colour, Moisture Condition, Consistency, Structure	Group Symbol	Moisture Condition	Consistency / Relative Density	Samples & Tests	Comments/Observations In situ test results	SCALE (m)
					0.30 (98.00)		TOPSOIL: Sandy SILT, trace gravel and cobbles, high plasticity, brown, sand is fine to coarse grained, gravel is coarse, angular, cobbles are 60-100 mm, w<PL	MH	D	St			
					0.85 (97.45)		CLAY with sand, medium plasticity, brown, mottled orange, sand is fine grained, w~PL, [Upper Tcbu]	Cl	M-D	VSt			
					0.85 (97.45)		SILT, trace sand and gravel, high plasticity, orange-brown, sand is fine to coarse grained, gravel is fine, subangular to subrounded, w~PL, [RS/XW Tbat]	MH	D-M	VSt-H			
					3.00 (95.30)		Sandy SILT, trace gravel, high plasticity, orange-brown, mottled cream, sand is fine to coarse grained, gravel is fine, subangular to subrounded, w~PL, [RS/XW Tbat]	MH	D-M	H	U63	U63 (3.0 - 3.4m)	
					3.40		Start of coring at 3.4 metres. See Core Log Sheet for cored interval.				PP SPT	PP @ 3.4m: >600 kPa (UCS) SPT @ 3.4m: 9*, N=R Recovery = 100 mm	

GEO SOIL BOREHOLE LOG SHEET_12626209.GPJ_GHD_GEO_TEMPLATE_TASMANIA.GDT 13/9/24

See standard sheets for details of abbreviations & basis of descriptions



Job No.
12626209

CORE LOG SHEET

Client : Department of State Growth
Project : AFL Training Facility and High Performance Centre
Location : Kingston Twin Ovals

LOCATION No. BH_K04A

SHEET 1 OF 4

Position : 523226.0 E, 5241983.0 N \ **Surface RL :** 98.30m **Angle from Horiz. :** 90° **Processed :** JP
Contractor : South Western Drilling **Rig Type :** Comacchio Geo 405 **Checked :** ASH
Date Started : 3 Jun 24 **Date Completed :** 4 Jun 24 **Logged by :** OP **Date :** 10 Sep 24

DRILLING			MATERIAL						ADDITIONAL DATA					
SCALE (m)	Method	Run	Water	Depth/ (RL)metres	Graphic Log	Description ROCK TYPE, colour, grain size, structure (texture, mineral composition, hardness, alteration, cementation, etc. as applicable) and SOIL TYPE, colour, structure, minor components (origin)	Weathering	Estimated Strength	Core Recovery (%)	RQD (%)	Defect Spacing (mm)	Samples & Tests	Additional Data Joints, partings, seams, zones and veins Fracture type, orientation, infilling or coating, shape, roughness, other Insitu test results	SCALE (m)
1														
2														
3														
4	HQ Coring	1		3.40 (94.90)		Start of coring at 3.4 metres. See Soil Log Sheet for soil interval. Boulder, MW-SW Dolerite, VH strength, blue-grey, some Fe staining [Possibly Tcbu]								
4		2		4.00 (94.30) 4.15 (94.15)		SILT with sand and gravel, high plasticity, orange-brown, sand is medium to coarse grained, gravel is fine to coarse, subangular to subrounded, gravel and sand are cream and red, hard, friable, [Possibly Tcbu] CORE LOSS = 750 mm	Soil							
5		3		4.90 (93.40)									SPT	SPT @ 4.9m = 6/11/16, N=27 Recovery = 450 mm

See standard sheets for details of abbreviations & basis of descriptions



Job No.
12626209

CORE LOG SHEET

Client : Department of State Growth
Project : AFL Training Facility and High Performance Centre
Location : Kingston Twin Ovals

LOCATION No. BH_K04A

SHEET 2 OF 4

Position : 523226.0 E, 5241983.0 N \ **Surface RL :** 98.30m **Angle from Horiz. :** 90° **Processed :** JP
Contractor : South Western Drilling **Rig Type :** Comacchio Geo 405 **Checked :** ASH
Date Started : 3 Jun 24 **Date Completed :** 4 Jun 24 **Logged by :** OP **Date :** 10 Sep 24

DRILLING			MATERIAL						ADDITIONAL DATA						
SCALE (m)	Method	Run	Water	Depth/ (RL)metres	Graphic Log	Description ROCK TYPE, colour, grain size, structure (texture, mineral composition, hardness, alteration, cementation, etc. as applicable) and SOIL TYPE, colour, structure, minor components (origin)	Weathering	Estimated Strength	Core Recovery (%)	RQD (%)	Defect Spacing (mm)	Samples & Tests	Additional Data Joints, partings, seams, zones and veins Fracture type, orientation, infilling or coating, shape, roughness, other Insitu test results	SCALE (m)	
6	HQ Coring	3				CLAY with sand, high plasticity, orange, mottled cream, sand is fine to coarse grained, fissured, hard [Possibly Tcbu]		Soil					5.55m: Fissure, 40°, Pln, Pol 5.67m: Fissure, 10°, Pln, Pol 5.70m: Fissure, 20°, Pln, Pol 5.85m: Fissure, 10°, Pln, Pol 6.25m: Fissure, 45°, Pln, Pol 6.31m: Fissure, 30°, Un, Pol 6.35m: Fissure, 60°, Un, Pol U50 (6.4 - 6.8m)	6	
7		4		7.10 (91.20)		Boulder, MW-HW Dolerite, H strength, grey-brown						PP SPT	PP @ 6.8m = > 600 kPa (UCS) SPT @ 6.8m = 7/8'/-, N=R Recovery = 200 mm	7	
					7.40 (90.90)		SILT, trace sand, high plasticity, orange, mottled cream, sand is fine to coarse grained, fissured, [Possibly Tcbu]		Soil					7.35m: Fissure, 10°, Cu, Pol 7.58m: Fissure, 60°, Pln, Pol	
8					7.90 (90.40) 8.00 (90.30)		CORE LOSS = 100 mm						U50	U50 (7.9 - 8.3m)	8
		5				Sandy CLAY, high plasticity, orange, mottled cream, sand is fine to coarse grained, fissured, hard, some green layers [Possibly Tcbu]		Soil				PP SPT	PP @ 8.3m = > 600 kPa (UCS) SPT @ 8.3m = 9/15/21, N=36 Recovery = 450 mm		
9													8.85m: Fissure, 60°, Pln, Pol 9.0m: Fissure, 40°, Pln, Pol 9.05m: Fissure, 20°, Pln, Pol 9.1 - 9.25m: Fissure Fz, 40-60°, 20mm, Pln, Pol	9	
		6										U50	U50 (9.4 - 9.8 m)		
10												PP SPT	PP @ 9.8m = > 600 kPa (UCS) SPT @ 9.8m = 10/14/10", N=R Recovery = 400 mm	10	

GEO CORE LOG SHEET 12626209.GPJ_GHD_GEO_TEMPLATE_TASMANIA.GDT 13/9/24

See standard sheets for details of abbreviations & basis of descriptions



Job No.
12626209

CORE LOG SHEET

Client : Department of State Growth
Project : AFL Training Facility and High Performance Centre
Location : Kingston Twin Ovals

LOCATION No. BH_K04A

SHEET 3 OF 4

Position : 523226.0 E, 5241983.0 N \ **Surface RL :** 98.30m **Angle from Horiz. :** 90° **Processed :** JP
Contractor : South Western Drilling **Rig Type :** Comacchio Geo 405 **Checked :** ASH
Date Started : 3 Jun 24 **Date Completed :** 4 Jun 24 **Logged by :** OP **Date :** 10 Sep 24

DRILLING			MATERIAL						ADDITIONAL DATA					
SCALE (m)	Method	Run	Water	Depth/ (RL)metres	Graphic Log	Description ROCK TYPE, colour, grain size, structure (texture, mineral composition, hardness, alteration, cementation, etc. as applicable) and SOIL TYPE, colour, structure, minor components (origin)	Weathering	Estimated Strength	Core Recovery (%)	RQD (%)	Defect Spacing (mm)	Samples & Tests	Joints, partings, seams, zones and veins Fracture type, orientation, infilling or coating, shape, roughness, other Insitu test results	SCALE (m)
11		6										U50	10.85m: Fissure, 10°, Cu, Pol U50 (10.9 - 11.3m)	11
		7										PP SPT	PP @ 11.3m = > 600 kPa (UCS) SPT @ 11.3m = 7/10/12, N=22 Recovery = 450 mm	
12				12.00 (86.30)		Cobble, sandstone, fine grained, L strength							12.0m: Fissure, 30°, Pln, Pol	12
				12.15 (86.15)		SILT, trace sand and gravel, high plasticity, orange-brown mottled red and cream, sand is fine to coarse grained, gravel is fine, subrounded, gravel is cream, red, black, and white, hard, [Possibly Tcbu] Very stiff	Soil					U50 PP SPT	12.28m: Fissure, 30°, Pln, Pol U50 (12.4 - 12.45) PP @ 12.45m = > 600 kPa (UCS) SPT @ 12.45m = 6/11/13, N=24 Recovery = 450 mm	
13		8											13.25m: Fissure, 30°, Cu, Pol 13.35m: Fissure, 30°, Pln, Pol	13
				13.60 (84.70)		CORE LOSS = 300 mm								
14				13.90 (84.40)		SILT, trace sand and gravel, high plasticity, orange-brown mottled red and cream, sand is fine to coarse grained, gravel is fine, subrounded, gravel is cream, red, black, and white, hard, [Possibly Tcbu]	Soil					U50	U50 (13.9 - 14.3m)	14
		9										PP SPT	PP @ 14.3m = > 600 kPa (UCS) SPT @ 14.35m = 16/30/20, N=50 Recovery = 250mm	
15													14.85m: Fissure, 60°, Pln, Pol	15

GEO CORE LOG SHEET 12626209.GPJ_GHD_GEO_TEMPLATE_TASMANIA.GDT 13/9/24

See standard sheets for details of abbreviations & basis of descriptions



Job No.
12626209

CORE LOG SHEET

Client : Department of State Growth
Project : AFL Training Facility and High Performance Centre
Location : Kingston Twin Ovals

LOCATION No. BH_K04A

SHEET 4 OF 4

Position : 523226.0 E, 5241983.0 N \ **Surface RL :** 98.30m **Angle from Horiz. :** 90° **Processed :** JP
Contractor : South Western Drilling **Rig Type :** Comacchio Geo 405 **Checked :** ASH
Date Started : 3 Jun 24 **Date Completed :** 4 Jun 24 **Logged by :** OP **Date :** 10 Sep 24

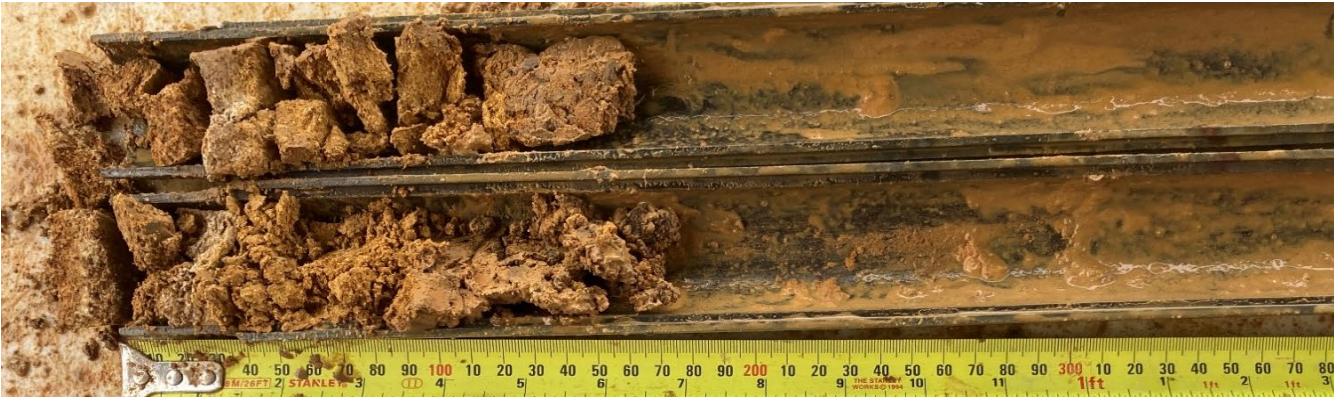
DRILLING				MATERIAL						ADDITIONAL DATA				
SCALE (m)	Method	Run	Water	Depth/ (RL)metres	Graphic Log	Description ROCK TYPE, colour, grain size, structure (texture, mineral composition, hardness, alteration, cementation, etc. as applicable) and SOIL TYPE, colour, structure, minor components (origin)	Weathering	Estimated Strength	Core Recovery (%)	RQD (%)	Defect Spacing (mm)	Samples & Tests	Additional Data	SCALE (m)
	HQ Coring	9		15.40 (82.90)		becoming grey						SPT	15.18m: Fissure, 20°, Pln, Pol SPT @ 15.4m = 9/16/18, N=34 Recovery = 450 mm	
16				15.85 (82.45)		EOH @ 15.85m - target depth reached. Standpipe installed on completion. End of hole at 15.9 metres.							Standpipe Construction Details (mBGL): 0.0 - 0.3m: Gatic cover and concrete plug 0.3 - 11.0m: Backfill 11.0 - 11.5m: Bentonite Plug 11.5 - 15.0m: Sand 12.0 - 15.0m: Screen	16
17														17
18														18
19														19
20														20

See standard sheets for details of abbreviations & basis of descriptions



Job No.
12626209

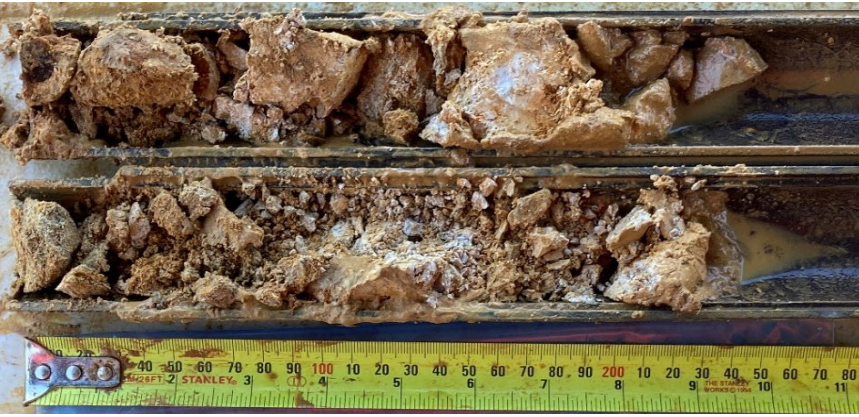
SPT (3.4 - 3.85), N* = R, 100 mm recovered



SPT (4.9 - 5.35), N* = 27, 450 mm recovered



SPT (6.8 - 7.0), N* = R, 200 mm recovered



SPT (8.3 - 8.75), N* = 36, 450 mm recovered



Job Number 12626209	Title A4	Kingston	Client Department of State Growth
BH_K04A		Photographic Record	

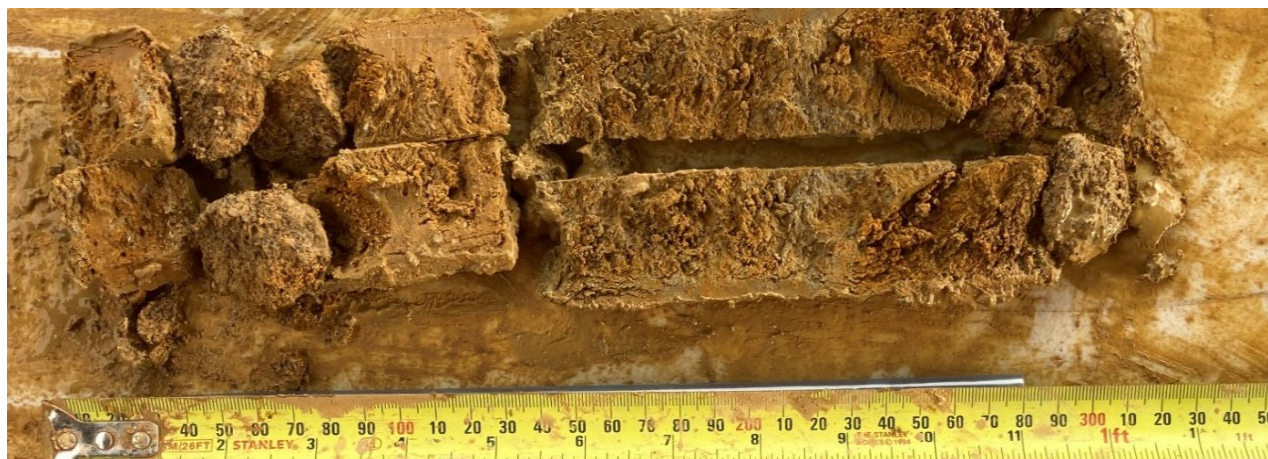
SPT (9.8 - 10.25), N* = R, 400 mm recovered



SPT (11.3 - 11.75), N* = 22, 450 mm recovered



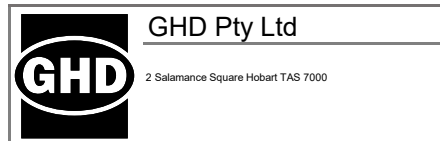
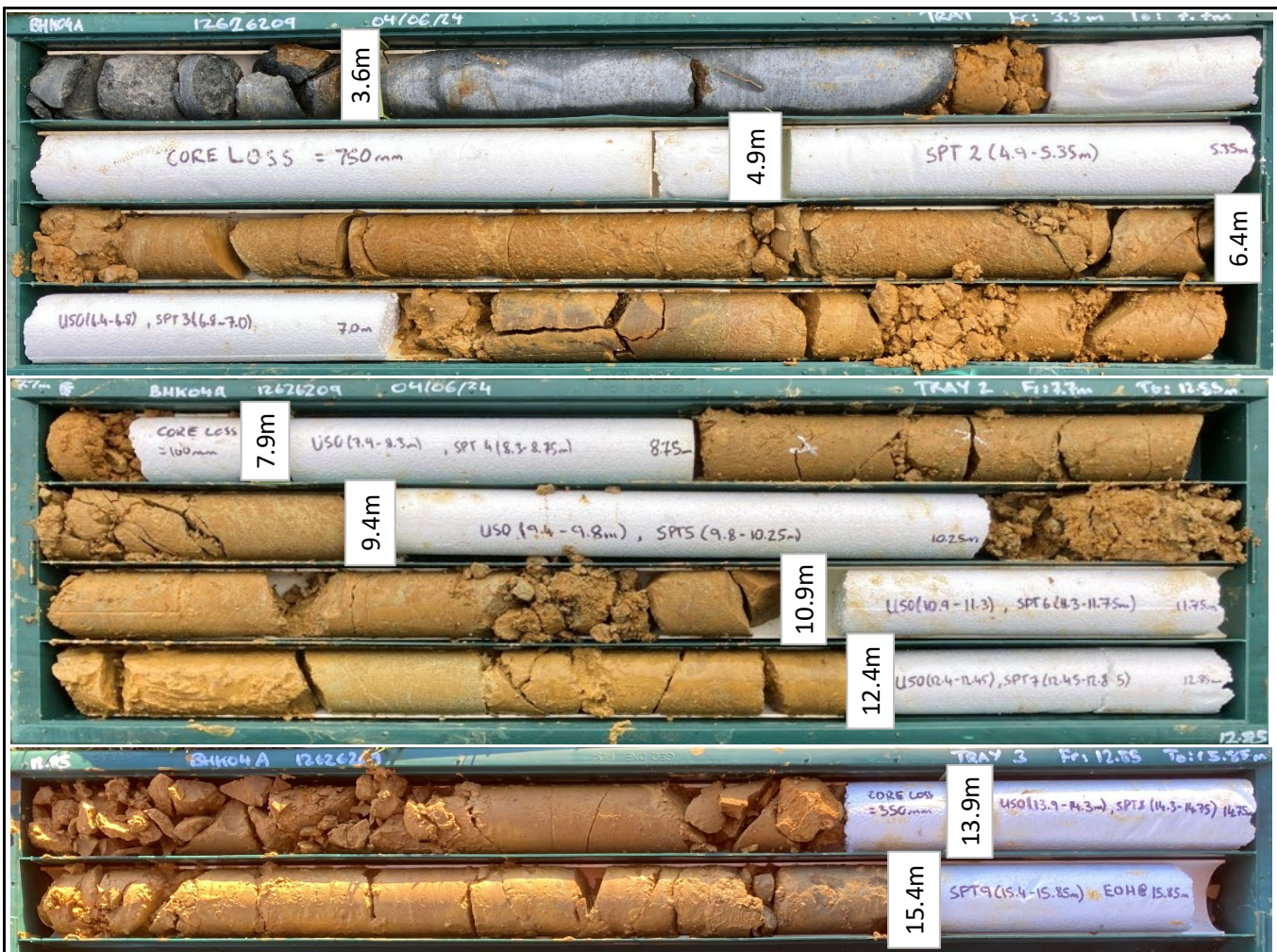
SPT (14.3 - 14.75), N* = 50, 250 mm recovered



SPT (15.4 - 15.85), N* = 34, 450 mm recovered



Job Number 12626209	A4	Title Kingston	Client Department of State Growth
BH_K04A		Photographic Record	



Job Number 12626209	A4	Title Kingston	Client Department of State Growth
BH_K04A		Photographic Record	

SOIL LOG SHEET

Client : Department of State Growth
Project : AFL Training Facility and High Performance Centre
Location : Kingston Twin Ovals

LOCATION No. BH_K05

SHEET 1 OF 3

Position : 523197.4 E, 5241909.0 N \ **Surface RL :** 94.60m **Angle from Horiz. :** 90° **Processed :** AOK
Contractor : South Western Drilling **Rig Type :** Comacchio Geo 405 **Checked :** ASH
Date Started : 2 Jun 24 **Date Completed :** 2 Jun 24 **Logged by :** OP **Date :** 10 Sep 24

DRILLING				MATERIAL					ADDITIONAL DATA					
SCALE (m)	Method	Hole Support	Run	Water	Depth/ (RL)metres	Graphic Log	Description Soil Name (USC Symbol) Other Minor Components, Plasticity or Particle Characteristics, Colour, Moisture Condition, Consistency, Structure	Group Symbol	Moisture Condition	Consistency / Relative Density	Samples & Tests	Comments/Observations Insitu test results	SCALE (m)	
					0.30 (94.30)		TOPSOIL: CLAY, trace sand, gravel and cobbles, low plasticity, brown, rootlets, sand is coarse grained, gravel is fine to coarse, subangular, cobbles are subangular, 60-150mm, w<PL	CL	D-M	VSt		Boulder @ 0.3m - moved ~1m north		
					1.60 (93.00)		CLAY, trace sand, gravel and cobbles, low plasticity, brown, sand is coarse grained, gravel is fine to coarse, subangular, cobbles are subangular, 60-150mm, w<PL [Upper Tcbu]	CL	D-M	VSt		U63	U63 (1.5 - 1.9m)	
					2.50 (92.10)		SILT with sand and gravel, high plasticity, orange-brown, fissured, sand is fine to coarse grained, gravel is fine to coarse, subangular, gravel is cream and black, w-PL, [RS/XW Tbat]	MH	M	VSt		PP SPT	PP @ 1.9m = >600kPa (UCS) SPT @ 1.9m = 4/8/10, N = 18 Recovery = 450mm	
					4.50 (90.10)		friable, w<PL		M-D	H		U63	U63 (3.0 - 3.4m)	
					5.00 (90.10)		Becoming sandy					PP SPT	PP @ 3.4m = 600 kPa (UCS) SPT @ 3.4m = 6/16/24/, N = 40 Recovery = 450mm PP @ 4.9m = >600 kPa (UCS) SPT @ 4.9m = 22/30*, N = R after 280mm Recovery = 280mm	

Solid Flight Auger

GEO SOIL BOREHOLE LOG SHEET 12626209.GPJ GHD_GEO_TEMPLATE_TASMANIA.GDT 12/9/24

See standard sheets for details of abbreviations & basis of descriptions



Job No.
12626209

SOIL LOG SHEET

Client : Department of State Growth
Project : AFL Training Facility and High Performance Centre
Location : Kingston Twin Ovals

LOCATION No. BH_K05

SHEET 2 OF 3

Position : 523197.4 E, 5241909.0 N \ **Surface RL :** 94.60m **Angle from Horiz. :** 90° **Processed :** AOK
Contractor : South Western Drilling **Rig Type :** Comacchio Geo 405 **Checked :** ASH
Date Started : 2 Jun 24 **Date Completed :** 2 Jun 24 **Logged by :** OP **Date :** 10 Sep 24

DRILLING				MATERIAL					ADDITIONAL DATA			
SCALE (m)	Method	Hole Support	Run Water	Depth/ (RL)metres	Graphic Log	Description Soil Name (USC Symbol) Other Minor Components, Plasticity or Particle Characteristics, Colour, Moisture Condition, Consistency, Structure	Group Symbol	Moisture Condition	Consistency / Relative Density	Samples & Tests	Comments/Observations In situ test results	SCALE (m)
	Solid Flight Auger			(89.60)		Sandy CLAY, trace gravel, high plasticity, orange-brown mottled cream and black, sand is fine to coarse grained, gravel is fine to medium grained, subangular, gravel is black, cream, friable, w-PL, [RS/XW Tbat]	CH	M-D	H			
6				6.00 (88.60)		red-brown, friable [RS/XW Tbat]	CH	M-D	H	U63	U63 (6.0 - 6.4m)	6
7				7.50 (87.10)		White clasts/marbling			H	U63	U63 (7.5 - 7.9m)	7
8				9.00 (85.60)		Sandy CLAY, trace gravel, high plasticity, orange-brown, sand is fine to coarse grained, gravel is fine, subangular, gravel is cream, brown, black, friable, w-PL, [RS/XW Tbat]	CH	M-D	H	U63	U63 (9.0 - 9.4m)	8
9										PP SPT	PP @ 6.4m = >600kPa (UCS) SPT @ 6.4m = 12/21/28, N = 49 Recovery = 450mm	9
10										PP SPT	PP @ 7.9m = >600kPa (UCS) SPT @ 7.9m: 12/21/30*, N = R after 380mm Recovery = 380mm	10
										PP SPT	PP @ 9.4m = >600kPa (UCS) SPT @ 9.4m: 16/30/30*, N = R after 400mm Recovery = 400mm	

GEO SOIL BOREHOLE LOG SHEET 12626209.GPJ GHD_GEO_TEMPLATE_TASMANIA.GDT 12/9/24

See standard sheets for details of abbreviations & basis of descriptions



Job No.
12626209

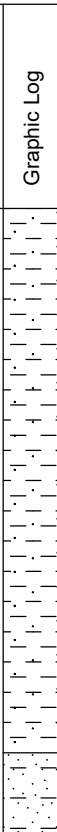
SOIL LOG SHEET

Client : Department of State Growth
Project : AFL Training Facility and High Performance Centre
Location : Kingston Twin Ovals

LOCATION No. BH_K05

SHEET 3 OF 3

Position : 523197.4 E, 5241909.0 N \ **Surface RL :** 94.60m **Angle from Horiz. :** 90° **Processed :** AOK
Contractor : South Western Drilling **Rig Type :** Comacchio Geo 405 **Checked :** ASH
Date Started : 2 Jun 24 **Date Completed :** 2 Jun 24 **Logged by :** OP **Date :** 10 Sep 24

DRILLING					MATERIAL					ADDITIONAL DATA			
SCALE (m)	Method	Hole Support	Run	Water	Depth/ (RL)metres	Graphic Log	Description Soil Name (USC Symbol) Other Minor Components, Plasticity or Particle Characteristics, Colour, Moisture Condition, Consistency, Structure	Group Symbol	Moisture Condition	Consistency / Relative Density	Samples & Tests	Comments/Observations Insitu test results	SCALE (m)
11	Solid Flight Auger				11.80 (82.80)			M-D	H		U63 U63 (10.5 - 10.9m)	PP @ 10.9m = >600kPa (UCS) SPT @ 10.9m = 15/30°, N = R after 250mm Recovery = 250mm	11
12		12.10 (82.50)					Silty SAND with gravel, fine to coarse grained, cream-brown, silt is low plasticity, gravel is fine grained, subangular, w<PL [Possibly Lower Tcbu]	SM	D	VD		11.5m: Auger grinding/struggling from 11.5m	12
13							EOH @ 12.1m - target depth reached. Standpipe installed on completion.					SPT @ 12.0m = 20°/-/-, N = R after 100mm Recovery = 100mm	13
14												Standpipe Construction Details (mBGL): 0.0 - 0.3m: Gatic cover and concrete plug 0.3 - 8.0m: Backfill 8.0 - 8.5m: Bentonite Plug 8.5 - 12.0m: Sand 9.0 - 12.0m: Screen	14
15													15

GEO SOIL BOREHOLE LOG SHEET 12626209.GPJ GHD_GEO_TEMPLATE_TASMANIA.GDT 12/9/24

See standard sheets for details of abbreviations & basis of descriptions



Job No.
12626209

SPT1 (1.9- 2.35), N* = 18, 450 mm recovered



SPT2 (3.4 - 3.85), N* = 40, 450 mm recovered



SPT3 (4.9 - 5.35), N* = R, 280 mm recovered



SPT4 (6.4 - 6.85), N* = 49, 450 mm recovered



SPT5 (7.9 - 8.35), N* = R, 380 mm recovered



GHD Pty Ltd

2 Salamance Square Hobart TAS 7000

Job Number

12626209

A4

Title

Kingston

Client

Department of State Growth

BH_K05

Photographic Record

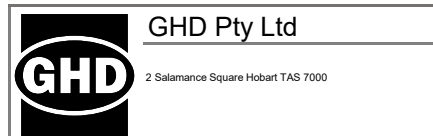
SPT6 (9.4 - 9.85), N* = R, 400 mm recovered



SPT7 (10.9 - 11.15), N* = R, 250 mm recovered



SPT8 (12 - 12.1), N* = R, 100 mm recovered



Job Number 12626209	A4	Title Kingston	Client Department of State Growth
BH_K05		Photographic Record	

SOIL LOG SHEET

Client : Department of State Growth
Project : AFL Training Facility and High Performance Centre
Location : Kingston Twin Ovals

LOCATION No. BH_K06

SHEET 1 OF 3

Position : 523040.6 E, 5241807.7 N \ **Surface RL :** 93.30m **Angle from Horiz. :** 90° **Processed :** AOK
Contractor : South Western Drilling **Rig Type :** Comacchio Geo 405 **Checked :** ASH
Date Started : 31 May 24 **Date Completed :** 31 May 24 **Logged by :** OP **Date :** 10 Sep 24

DRILLING				MATERIAL					ADDITIONAL DATA				
SCALE (m)	Method	Hole Support	Run	Water	Depth/ (RL)metres	Graphic Log	Description Soil Name (USC Symbol) Other Minor Components, Plasticity or Particle Characteristics, Colour, Moisture Condition, Consistency, Structure	Group Symbol	Moisture Condition	Consistency / Relative Density	Samples & Tests	Comments/Observations Insitu test results	SCALE (m)
					0.40 (92.90)		TOPSOIL: SILT with sand, high plasticity, brown, sand is fine grained, w<PL	MH	D	F			
					1.10 (92.20)		SILT, trace sand, high plasticity, brown mottled orange, sand is fine grained, w~PL, [Upper Tcbu]	MH	M	St	U63	U63 (0.5-0.9m): Recovery = 250mm	
					1.10 (92.20)		Becoming orange [Possibly Tbat]				PP SPT	PP @ 0.9m = 130kPa (UCS) SPT @ 0.9m = 2/3/7, N=10 Recovery = 300mm	
					3.00 (90.30)		SILT with gravel and sand, high plasticity, orange, mottled cream, fissured, gravel is fine, subangular to subrounded, sand is medium to coarse grained, gravel is black and cream, w~PL, [RS/XW Tbat]	MH	M	H	U63	U63 (3.0-3.4m)	
					4.50 (88.80)		CLAY, trace gravel and sand, high plasticity, orange, mottled red and cream, gravel is fine, subangular to subrounded, sand is coarse grained, friable, w~PL, [RS Tbat]	CH	M	H	SPT	SPT @ 4.5m = 7/12/21, N=33 Recovery = 450mm	

Solid Flight Auger

GEO SOIL BOREHOLE LOG SHEET 12626209.GPJ GHD_GEO_TEMPLATE_TASMANIA.GDT 13/9/24

See standard sheets for details of abbreviations & basis of descriptions



Job No.
12626209

SOIL LOG SHEET

Client : Department of State Growth
Project : AFL Training Facility and High Performance Centre
Location : Kingston Twin Ovals

LOCATION No. BH_K06

SHEET 2 OF 3

Position : 523040.6 E, 5241807.7 N \ **Surface RL :** 93.30m **Angle from Horiz. :** 90° **Processed :** AOK

Contractor : South Western Drilling **Rig Type :** Comacchio Geo 405 **Checked :** ASH

Date Started : 31 May 24 **Date Completed :** 31 May 24 **Logged by :** OP **Date :** 10 Sep 24

DRILLING				MATERIAL					ADDITIONAL DATA				
SCALE (m)	Method	Hole Support	Run	Water	Depth/ (RL)metres	Graphic Log	Description Soil Name (USC Symbol) Other Minor Components, Plasticity or Particle Characteristics, Colour, Moisture Condition, Consistency, Structure	Group Symbol	Moisture Condition	Consistency / Relative Density	Samples & Tests	Comments/Observations Insitu test results	SCALE (m)
					5.50 (87.80)		SILT, trace gravel and sand, high plasticity, orange, mottled red and cream, fissured, gravel is fine, subangular to subrounded, sand is coarse grained, friable, w-PL, [RS Tbat]	MH	M	H		Layer depth inferred	
6											U63	U63 (6.0-6.4m)	6
											PP SPT	PP @ 6.4m = >600kPa (UCS) SPT @ 6.4 m = 11/18/30*, N=R, *refusal after 410 mm Recovery = 410 mm	
7												Penetrated through hard layer @ 7.3m	7
					7.50 (85.80)		Becoming orange, mottled cream and red, fissured				SPT	SPT @ 7.5m = 9/19/30*, N=R, *refusal after 420 mm Recovery = 420 mm	
8													8
9											U63	U63 (9.0-9.4m)	9
											PP SPT	PP @ 9.40m = > 600kPa (UCS) SPT @ 9.4m: 15/19/20, N=39 Recovery = 450 mm	
10													10

GEO SOIL BOREHOLE LOG SHEET 12626209.GPJ GHD_GEO_TEMPLATE_TASMANIA.GDT 13/9/24

See standard sheets for details of abbreviations & basis of descriptions



Job No.
12626209

SOIL LOG SHEET

Client : Department of State Growth
Project : AFL Training Facility and High Performance Centre
Location : Kingston Twin Ovals

LOCATION No. BH_K06

SHEET 3 OF 3

Position : 523040.6 E, 5241807.7 N \ **Surface RL :** 93.30m **Angle from Horiz. :** 90° **Processed :** AOK
Contractor : South Western Drilling **Rig Type :** Comacchio Geo 405 **Checked :** ASH
Date Started : 31 May 24 **Date Completed :** 31 May 24 **Logged by :** OP **Date :** 10 Sep 24

DRILLING					MATERIAL					ADDITIONAL DATA			
SCALE (m)	Method	Hole Support	Run	Water	Depth/ (RL)metres	Graphic Log	Description Soil Name (USC Symbol) Other Minor Components, Plasticity or Particle Characteristics, Colour, Moisture Condition, Consistency, Structure	Group Symbol	Moisture Condition	Consistency / Relative Density	Samples & Tests	Comments/Observations In situ test results	SCALE (m)
11	Solid Flight Auger				11.10		Start of coring at 11.1 metres. See Core Log Sheet for cored interval.		M	H			11
12													12
13													13
14													14
15													15

GEO SOIL BOREHOLE LOG SHEET 12626209.GPJ GHD_GEO_TEMPLATE_TASMANIA.GDT 13/9/24

See standard sheets for details of abbreviations & basis of descriptions



Job No.
12626209

CORE LOG SHEET

Client : Department of State Growth
Project : AFL Training Facility and High Performance Centre
Location : Kingston Twin Ovals

LOCATION No. BH_K06

SHEET 1 OF 4

Position : 523040.6 E, 5241807.7 N \ **Surface RL :** 93.30m **Angle from Horiz. :** 90° **Processed :** AOK

Contractor : South Western Drilling **Rig Type :** Comacchio Geo 405 **Checked :** ASH

Date Started : 31 May 24 **Date Completed :** 31 May 24 **Logged by :** OP **Date :** 10 Sep 24

DRILLING				MATERIAL						ADDITIONAL DATA				
SCALE (m)	Method	Run	Water	Depth/ (RL)metres	Graphic Log	Description ROCK TYPE, colour, grain size, structure (texture, mineral composition, hardness, alteration, cementation, etc. as applicable) and SOIL TYPE, colour, structure, minor components (origin)	Weathering	Estimated Strength	Core Recovery (%) 20 80	RQD (%) 20 40 100 300 1000	Defect Spacing (mm)	Samples & Tests	Additional Data Joints, partings, seams, zones and veins Fracture type, orientation, infilling or coating, shape, roughness, other Insitu test results	SCALE (m)
11				11.10 (82.20)		Start of coring at 11.1 metres. See Soil Log Sheet for soil interval.								11
				11.60 (81.70)		SILT, trace sand and gravel, low plasticity, orange-brown, gravel is fine to coarse, subangular, sand is coarse grained, w~PL, [Possibly Tcbu]							11.6m: Fissure, 60°, Pln, Pol	
12		1		12.50 (80.80)		Boulder, HW dolerite, orange to grey							11.9m: Fissure, 30°, Pln, Pol 11.95m: Fissure, 60°, Pln, Pol	
				13.35 (79.95)		Sandy CLAY, trace gravel, high plasticity, orange-brown, gravel is fine to coarse grained, subangular, hard, w~PL, [Possibly Tcbu]						U50	U50 (12.5-12.0m)	
13	HQ Coring			14.40 (78.90)		gravel is fine, white						PP SPT	PP @ 12.9m: >600kPa (UCS) SPT @ 12.9m = 8/11/13, N = 24 Recovery = 400mm	13
		2				with XW dolerite cobbles, white with black speckles							U50	U50 (14-14.4m)
14												PP SPT	PP @ 14.4m = >600kPa (UCS) SPT @ 14.41m = 11/15/20, N=35 Recovery = 450 mm	14
													14.85m: Fissure, 60°, Pln, Pol	15

GEO CORE LOG SHEET 12626209.GPJ_GHD_GEO_TEMPLATE_TASMANIA.GDT 13/9/24

See standard sheets for details of abbreviations & basis of descriptions



Job No.
12626209

CORE LOG SHEET

Client : Department of State Growth
Project : AFL Training Facility and High Performance Centre
Location : Kingston Twin Ovals

LOCATION No. BH_K06

SHEET 2 OF 4

Position : 523040.6 E, 5241807.7 N \ **Surface RL :** 93.30m **Angle from Horiz. :** 90° **Processed :** AOK

Contractor : South Western Drilling **Rig Type :** Comacchio Geo 405 **Checked :** ASH

Date Started : 31 May 24 **Date Completed :** 31 May 24 **Logged by :** OP **Date :** 10 Sep 24

DRILLING				MATERIAL							ADDITIONAL DATA			
SCALE (m)	Method	Run	Water	Depth/ (RL)metres	Graphic Log	Description ROCK TYPE, colour, grain size, structure (texture, mineral composition, hardness, alteration, cementation, etc. as applicable) and SOIL TYPE, colour, structure, minor components (origin)	Weathering	Estimated Strength	Core Recovery (%)		Defect Spacing (mm)	Samples & Tests	Additional Data Joints, partings, seams, zones and veins Fracture type, orientation, infilling or coating, shape, roughness, other Insitu test results	SCALE (m)
									20	80				
16		4										U50	U50 (15.5-15.9m)	
				17.00 (76.30)		with gravel, XW dolerite						PP SPT	PP @ 15.9m = >600kPa (UCS) SPT @ 15.9m = 9/12/26, N=38 Recovery = 450 mm	16
17												U50	U50 (17-17.4m)	
	HQ Coring											PP SPT	PP @ 17.4m = >600kPa (UCS) SPT @ 17.4m: 10/13, /19, N=32 Recovery = 450mm	
18		5												
				18.50 (74.80)		SILT, with gravel and cobbles, high plasticity, orange-brown, hard, gravel is coarse, subrounded XW dolerite/siltstone, cobbles are <100mm, subrounded, white mottled black/red, [Possibly Tcbu]	Soil					U50	U50 (18.50-18.8m) - tube fell off rod - fully recovered	
19		6										PP	PP @ 18.9 = >600kPa (UCS)	
				19.10 (74.20)		19.1-19.3m: Sandy SILT, low plasticity, sand is coarse grained, subangular							19.1m: Fissure, 60°, Pln, Pol	
				19.30 (74.00)		SILT, with gravel and cobbles, high plasticity, orange-brown, hard, gravel is coarse, subrounded XW dolerite, cobbles are <100mm, subrounded, white, mottled black/red, [Possibly Tcbu]	Soil							
20		7										SPT	SPT @ 19.8m = 11/15°, N=R, *refusal after 225mm Recovery = 225mm	
		8		20.00										

See standard sheets for details of abbreviations & basis of descriptions



Job No.
12626209

GEO CORE LOG SHEET 12626209.GPJ_GHD_GEO_TEMPLATE_TASMANIA.GDT 13/9/24

CORE LOG SHEET

Client : Department of State Growth
Project : AFL Training Facility and High Performance Centre
Location : Kingston Twin Ovals

LOCATION No. BH_K06

SHEET 3 OF 4

Position : 523040.6 E, 5241807.7 N \ **Surface RL :** 93.30m **Angle from Horiz. :** 90° **Processed :** AOK

Contractor : South Western Drilling **Rig Type :** Comacchio Geo 405 **Checked :** ASH

Date Started : 31 May 24 **Date Completed :** 31 May 24 **Logged by :** OP **Date :** 10 Sep 24

DRILLING			MATERIAL							ADDITIONAL DATA				
SCALE (m)	Method	Run	Water	Depth/ (RL)metres	Graphic Log	Description ROCK TYPE, colour, grain size, structure (texture, mineral composition, hardness, alteration, cementation, etc. as applicable) and SOIL TYPE, colour, structure, minor components (origin)	Weathering	Estimated Strength	Core Recovery (%)	RQD (%)	Defect Spacing (mm)	Samples & Tests	Joints, partings, seams, zones and veins Fracture type, orientation, infilling or coating, shape, roughness, other Insitu test results	SCALE (m)
		8		(73.30)		Boulder, SW, VH strength dolerite, blue-grey, some joints							20.0m: Jt, 60°, Pln, Rf, Fe Sn	
				20.70 (72.60)		SILT, with sand and gravel, trace cobble, high plasticity, orange-brown, hard, gravel is coarse, subrounded XW Dolerite, cobbles are <100mm, subrounded, white, mottled black/red, [Possibly Tcbu]	Soil						20.36m: Jt, 60°, Cu, Rf 20.40m: Jt, 30°, Un, Rf	
				21.30 (72.00)		gravel is 5-30mm, trace Qtz sand							20.68m: Jt, 60°, Pln, Rf, Fe Sn 20.81m: Fissure, 0°, Cu, Pol 20.87m: Fissure, 60°, Cu, Pol	
		9		21.70 (71.60)		MIXTURE OF BOULDERS/COBBLES (50%) and Sandy SILT with gravel (50%), boulders and cobbles are XW to SW dolerite, H to EH strength, up to 600mm, silt is low plasticity, orange-brown, sand is fine to coarse grained, gravel is fine to coarse, XW-SW dolerite [Possibly Tcbu]							21.7-22.0m: Boulder	
	HQ Coring												22.15m: Fissure, 0°, Cu, Rf 22.3m: Fissure, 0°, Pln, Pol 22.6-22.9m: Boulder	
													22.9-23.3m: Boulder	
		10											23.33m: Jt, 0°, Pln, Sn 23.37m: Jt, 0°, Pln, Sn	
													23.68m: Fissure, 20°, Cu, Sm 23.82m: Fissure, 0°, Pln, Pol	
													24.21m: Fissure, 60°, Pln, Pol	
													24.4-24.65m: Boulder	
				24.55 (68.75)		DOLERITE BRECCIA, dark grey to blue-grey, matrix supported (70%), matrix is siltstone, clasts are dolerite (up to 60mm), subangular	M						Is (50) Is (50) (24.6m) = 0.40 MPa 24.65m: Jt, 60°, Pln, Rf, Ce, Sn 24.69m: Fissure, 0°, Un, Sm 24.78m: Jt, 0°, Pln, Rf	
				25.00										

See standard sheets for details of abbreviations & basis of descriptions



Job No.
12626209

GEO CORE LOG SHEET 12626209.GPJ GHD_GEO_TEMPLATE_TASMANIA.GDT 13/9/24

CORE LOG SHEET

Client : Department of State Growth
Project : AFL Training Facility and High Performance Centre
Location : Kingston Twin Ovals

LOCATION No. BH_K06

SHEET 4 OF 4

Position : 523040.6 E, 5241807.7 N \ **Surface RL :** 93.30m **Angle from Horiz. :** 90° **Processed :** AOK

Contractor : South Western Drilling **Rig Type :** Comacchio Geo 405 **Checked :** ASH

Date Started : 31 May 24 **Date Completed :** 31 May 24 **Logged by :** OP **Date :** 10 Sep 24

DRILLING				MATERIAL						ADDITIONAL DATA				
SCALE (m)	Method	Run	Water	Depth/ (RL)metres	Graphic Log	Description ROCK TYPE, colour, grain size, structure (texture, mineral composition, hardness, alteration, cementation, etc. as applicable) and SOIL TYPE, colour, structure, minor components (origin)	Weathering	Estimated Strength	Core Recovery (%)		Defect Spacing (mm)	Samples & Tests	Additional Data	SCALE (m)
									20	80				
				(68.30)		EOH - target reached @ 25m. Standpipe installed upon completion. End of hole at 25.0 metres.							Standpipe Construction Details (mBGL): 0.0 - 0.3m: Gatic cover and concrete plug 0.3 - 21.0m: Backfill 21.0 - 21.5m: Bentonite Plug 21.5 - 25.0m: Sand 22.0 - 10.0m: Screen	
26														26
27														27
28														28
29														29
30														30

GEO CORE LOG SHEET 12626209.GPJ GHD_GEO_TEMPLATE_TASMANIA.GDT 13/9/24

See standard sheets for details of abbreviations & basis of descriptions



Job No.
12626209

SPT (0.9 - 1.35), N* = 10, 300 mm recovered



SPT (1.5 - 1.9), N* = 14, 350 mm recovered



SPT (3.4 - 3.85), N* = 31, 450 mm recovered



SPT (4.5 - 4.9), N*= 33, 450 mm recovered



SPT (6.4 - 6.88), N* = R, 410 mm recovered



GHD Pty Ltd

2 Salamance Square Hobart TAS 7000

Job Number

12626209

A4

Title

Kingston

Client

Department of State Growth

BH_K06

Photographic Record

SPT (7.5 - 7.9m), N* = R, 420 mm recovered



SPT (9.4 - 9.85), N* = 39, 450 mm recovered



SPT (12.9 - 13.35), N* = 24, 400 mm recovered



SPT (14.4 - 14.85), N* = 35, 450 mm recovered



SPT (15.8 - 16.35), N* = 38, 450 mm recovered



SPT (17.4 - 17.85), N* = 32, 450 mm recovered



GHD Pty Ltd

2 Salamance Square Hobart TAS 7000

Job Number

12626209

A4

Title

Kingston

Client

Department of State Growth

BH_K06

Photographic Record

SPT (19.8 - 20.25), N* = R, 225 mm recovered



	GHD Pty Ltd
	2 Salamanca Square Hobart TAS 7000

Job Number 12626209	A4	Title Kingston	Client Department of State Growth
BH_K06		Photographic Record	



GHD Pty Ltd

2 Salamanca Square Hobart TAS 7000

Job Number 12626209	A4	Title Kingston	Client Department of State Growth
BH_K06		Photographic Record	

SOIL LOG SHEET

Client : Department of State Growth
Project : AFL Training Facility and High Performance Centre
Location : Kingston Twin Ovals

LOCATION No. BH_K07

SHEET 1 OF 3

Position : 522984.4 E, 5241785.3 N \ **Surface RL :** 93.60m **Angle from Horiz. :** 90° **Processed :** OP
Contractor : South Western Drilling **Rig Type :** Comacchio Geo 405 **Checked :** ASH
Date Started : 5 Jun 24 **Date Completed :** 6 Jun 24 **Logged by :** OP **Date :** 10 Sep 24

DRILLING				MATERIAL					ADDITIONAL DATA				
SCALE (m)	Method	Hole Support	Run	Water	Depth/ (RL)metres	Graphic Log	Description Soil Name (USC Symbol) Other Minor Components, Plasticity or Particle Characteristics, Colour, Moisture Condition, Consistency, Structure	Group Symbol	Moisture Condition	Consistency / Relative Density	Samples & Tests	Comments/Observations Insitu test results	SCALE (m)
					0.30 (93.30)		TOPSOIL: SILT with sand, high plasticity, brown, sand is fine to medium grained, w<PL	MH	D	St			
							CLAY, trace sand and gravel, high plasticity, brown mottled orange and grey, sand is fine to coarse grained, gravel is medium, angular, w-PL, [Upper Tcbu]	CH	M	F-St	U63	U63 (0.5 - 0.9m)	
1							Sandy CLAY, high plasticity, orange mottled cream, sand is fine to coarse grained, friable, w-PL, [RS/XW Tbat]	CH	D-M	VSt-H	PP SPT	PP @ 0.9m = 100 kPa (UCS) SPT @ 0.9m: 2/3/5, N = 8 Recovery = 450mm	1
					1.80 (91.80)						U63	U63 (1.5 - 1.9m)	
2							orange-brown, sand is medium to coarse grained, black clasts, friable			H	U63	U63 (3.0 - 3.4m)	
					3.00 (90.60)						PP SPT	PP @ 1.9m = 550 kPa (UCS) SPT @ 1.9m = 6/9/4, N = 23 Recovery = 450mm	2
3											U63	U63 (3.0 - 3.4m)	
											PP SPT	PP @ 3.4m = >600 kPa (UCS) SPT @ 3.4m = 8/26/30, N = 56 Recovery = 450mm	3
4											U63	U63 (4.5 - 4.9m)	
											PP SPT	PP @ 4.9m = >600 kPa (UCS) SPT @ 4.9m = 13/24/28, N = 52 Recovery = 450mm	4
5													5

Solid Flight Auger

GEO SOIL BOREHOLE LOG SHEET 12626209.GPJ GHD_GEO_TEMPLATE_TASMANIA.GDT 13/9/24

See standard sheets for details of abbreviations & basis of descriptions



Job No.
12626209

SOIL LOG SHEET

Client : Department of State Growth
Project : AFL Training Facility and High Performance Centre
Location : Kingston Twin Ovals

LOCATION No. BH_K07

SHEET 2 OF 3

Position : 522984.4 E, 5241785.3 N \ **Surface RL :** 93.60m **Angle from Horiz. :** 90° **Processed :** OP
Contractor : South Western Drilling **Rig Type :** Comacchio Geo 405 **Checked :** ASH
Date Started : 5 Jun 24 **Date Completed :** 6 Jun 24 **Logged by :** OP **Date :** 10 Sep 24

DRILLING					MATERIAL				ADDITIONAL DATA			
SCALE (m)	Method	Hole Support	Run	Water	Depth/ (RL)metres	Graphic Log	Description Soil Name (USC Symbol) Other Minor Components, Plasticity or Particle Characteristics, Colour, Moisture Condition, Consistency, Structure	Group Symbol	Moisture Condition Consistency / Relative Density	Samples & Tests	Comments/Observations Insitu test results	SCALE (m)
6	Solid Flight Auger								D-M M	VSt H	Auger punched through very hard layer just below the SPT depth	6
7									D	H	U63 U63 (6.0 - 6.1m) PP @ 6.1m = >600 kPa (UCS) SPT @ 6.1m = 14/30'±, N = R after 280mm Recovery = 280mm	7
7.50 (86.10)							Silty SAND with gravel, fine to coarse grained, pale grey to white, trace orange, silt is low plasticity, gravel is fine to medium, subangular, friable, w<PL, [RS/XW Tbat]	SM	D	H	U63 U63 (7.5 - 7.9m) Increased sand content PP @ 7.9m = >600 kPa (UCS) SPT @ 7.9m = 7/19/28, N = 47 Recovery = 450mm	8
8											U63 U63 (9.0 - 9.4m) PP @ 9.4m = >600 kPa (UCS) SPT @ 9.4m = 12/25/30, N = 55 Recovery = 450mm	9
10												10

GEO SOIL BOREHOLE LOG SHEET_12626209.GPJ_GHD_GEO_TEMPLATE_TASMANIA.GDT 13/9/24

See standard sheets for details of abbreviations & basis of descriptions



Job No.
12626209

SOIL LOG SHEET

Client : Department of State Growth
Project : AFL Training Facility and High Performance Centre
Location : Kingston Twin Ovals

LOCATION No. BH_K07

SHEET 3 OF 3

Position : 522984.4 E, 5241785.3 N \ **Surface RL :** 93.60m **Angle from Horiz. :** 90° **Processed :** OP
Contractor : South Western Drilling **Rig Type :** Comacchio Geo 405 **Checked :** ASH
Date Started : 5 Jun 24 **Date Completed :** 6 Jun 24 **Logged by :** OP **Date :** 10 Sep 24

DRILLING					MATERIAL					ADDITIONAL DATA			
SCALE (m)	Method	Hole Support	Run	Water	Depth/ (RL)metres	Graphic Log	Description Soil Name (USC Symbol) Other Minor Components, Plasticity or Particle Characteristics, Colour, Moisture Condition, Consistency, Structure	Group Symbol	Moisture Condition	Consistency / Relative Density	Samples & Tests	Comments/Observations In situ test results	SCALE (m)
					10.20		Start of coring at 10.2 metres. See Core Log Sheet for cored interval.		D	H			
11													11
12													12
13													13
14													14
15													15

GEO SOIL BOREHOLE LOG SHEET 12626209.GPJ GHD_GEO_TEMPLATE_TASMANIA.GDT 13/9/24

See standard sheets for details of abbreviations & basis of descriptions



Job No.
12626209

CORE LOG SHEET

Client : Department of State Growth	LOCATION No. BH_K07	
Project : AFL Training Facility and High Performance Centre		
Location : Kingston Twin Ovals	SHEET 1 OF 4	
Position : 522984.4 E, 5241785.3 N \	Surface RL : 93.60m	Angle from Horiz. : 90°
Contractor : South Western Drilling	Rig Type : Comacchio Geo 405	Processed : OP
Date Started : 5 Jun 24	Date Completed : 6 Jun 24	Logged by : OP
		Date : 10 Sep 24

DRILLING			MATERIAL						ADDITIONAL DATA					
SCALE (m)	Method	Run	Water	Depth/ (RL)metres	Graphic Log	Description ROCK TYPE, colour, grain size, structure (texture, mineral composition, hardness, alteration, cementation, etc. as applicable) and SOIL TYPE, colour, structure, minor components (origin)	Weathering	Estimated Strength	Core Recovery (%)	RQD (%)	Defect Spacing (mm)	Samples & Tests	Joints, partings, seams, zones and veins Fracture type, orientation, infilling or coating, shape, roughness, other Insitu test results	SCALE (m)
				10.20 (83.40)		Start of coring at 10.2 metres. See Soil Log Sheet for soil interval.								
		1		10.40 (83.20)		Sandy CLAY, trace gravel, low plasticity, orange-brown, hard, sand is medium to coarse grained, gravel is fine, subangular, black, cream and red, [RS/XW Tbat]	XW	Soil						
				10.55 (83.05)		Cobble, MW, H strength dolerite, grey-brown, Fe Sn, ~150mm								
				10.70 (82.90)		AGGLOMERATE, orange-brown, 5-10mm amygdalae, black, red and cream, ~20%, [Tbat]	HW	VL		0			Fz: 10.55 - 10.7m, 5 - 25mm	
				11.10 (82.50)		Boulder, MW-SW, H strength dolerite, grey, Fe Sn, ~400mm							10.7m: Jt, 60°, Pln, Sm, Fe Sn	
				11.10 (82.50)		AGGLOMERATE, orange-brown, 5-20mm amygdalae, black, red and cream, [Tbat]	HW	L		44			Is(50) Is(50) (11.1m) = 0.23 MPa	
				11.45 (82.15)		Boulder, MW, H strength volcanic breccia, dark grey, vesicular, clasts up to 10mm, ~200mm		H					11.2m: Jt, 0°, Un, Rf 11.34m: Jt, 10°, Un, Rf	
		2		11.65 (81.95)		AGGLOMERATE, orange-brown, 5-20mm amygdalae, black, red and cream, trace HW dolerite cobbles, [Tbat]	HW	L		44			11.73m: Jt, 20°, Un, Rf 11.92m: Jt, 10°, Pln, Rf 12.05m: Jt, 10°, Pln, Rf 12.18m: Jt, 10°, Un, Rf Fz: 12.2 - 12.4m, 10 - 30mm	
				13.40 (80.20)		CORE LOSS = 500mm							Fz: 12.6 - 12.7m, 5 - 15mm, dolerite	
		3		13.90 (79.70)		AGGLOMERATE, orange-brown, 5-20mm amygdalae, black, red and cream, trace HW dolerite cobbles, [Tbat]	XW HW						13.1 - 13.2m: XW soil strength, may be core loss	
				13.90 (79.70)		AGGLOMERATE, orange-brown, 5-20mm amygdalae, black, red and cream, trace HW dolerite cobbles, [Tbat]	HW	L					13.9 - 14.4m: IR defects, typically 40mm spacing	
		4		14.40 (79.20)		Sandy SILT, trace gravel, high plasticity, yellow-brown to green-brown, hard, sand is fine grained, gravel is fine to medium, subangular, orange and cream, [Tertiary Sediments]		Soil					Is(50) Is(50) (14.2m) = 0.28 MPa	

GEO CORE LOG SHEET 12626209.GPJ_GHD_GEO_TEMPLATE_TASMANIA.GDT 13/9/24

See standard sheets for details of abbreviations & basis of descriptions



Job No.
12626209

CORE LOG SHEET

Client : Department of State Growth
Project : AFL Training Facility and High Performance Centre
Location : Kingston Twin Ovals

LOCATION No. BH_K07

SHEET 2 OF 4

Position : 522984.4 E, 5241785.3 N \ **Surface RL :** 93.60m **Angle from Horiz. :** 90° **Processed :** OP
Contractor : South Western Drilling **Rig Type :** Comacchio Geo 405 **Checked :** ASH
Date Started : 5 Jun 24 **Date Completed :** 6 Jun 24 **Logged by :** OP **Date :** 10 Sep 24

DRILLING				MATERIAL						ADDITIONAL DATA				
SCALE (m)	Method	Run	Water	Depth/ (RL)metres	Graphic Log	Description ROCK TYPE, colour, grain size, structure (texture, mineral composition, hardness, alteration, cementation, etc. as applicable) and SOIL TYPE, colour, structure, minor components (origin)	Weathering	Estimated Strength	Core Recovery (%)	RQD (%)	Defect Spacing (mm)	Samples & Tests	ADDITIONAL DATA	SCALE (m)
16		4		16.20 (77.40)		Boulder, MW, H strength dolerite, blue-grey, Fe Sn, 250mm						U50	U50 (15.4 - 15.8m)	16
		5		16.45 (77.15)		AGGLOMERATE, orange-brown, 5-20mm amygdales, black, red and cream, ~20%, [Tbat]	HW	L-VL		0		PP SPT	PP @ 15.8m = >600 kPa (UCS) SPT @ 15.8m = 9/13/12*, N = R after 380mm Recovery = 380mm	
17													Fz: 16.45 - 16.9m, 20 - 30mm	
		6											Fz: 16.9 - 17.5m, 30 - 60mm	
18	HQ Coring												17.64m: Jt, 30°, Un, Rf	
													Fz: 17.8 - 18.2m, 50 - 80mm	
				18.20 (75.40)		CORE LOSS = 200mm						Is(50)	Is(50) (18.1m) = 0.26 MPa	
				18.40 (75.20)		Sandy SILT, trace gravel, high plasticity, orange-brown, sand is fine to coarse grained, gravel is fine, subangular, friable, [XW Tbat]	XW	Soil						
				18.80 (74.80)		Cobble, HW, M strength dolerite, orange-brown, Fe Sn, 250mm								
19				19.05 (74.55)		Boulder, SW, VH strength dolerite, blue-grey, Fe Sn, 850mm [Possibly Tcbuj]							Fz: 18.8 - 19.05m, ~5 - 20mm, HW dolerite	19
		7												
				19.90 (73.70)		SILTSTONE, orange brown, trace gravel inclusions,	HW	L-VL		75				

See standard sheets for details of abbreviations & basis of descriptions



Job No.
12626209

GEO CORE LOG SHEET 12626209.GPJ_GHD_GEO_TEMPLATE_TASMANIA.GDT 13/9/24

CORE LOG SHEET

Client : Department of State Growth
 Project : AFL Training Facility and High Performance Centre
 Location : Kingston Twin Ovals

LOCATION No. BH_K07

SHEET 3 OF 4

Position : 522984.4 E, 5241785.3 N \ Surface RL : 93.60m Angle from Horiz. : 90° Processed : OP
 Contractor : South Western Drilling Rig Type : Comacchio Geo 405 Checked : ASH
 Date Started : 5 Jun 24 Date Completed : 6 Jun 24 Logged by : OP Date : 10 Sep 24

DRILLING				MATERIAL						ADDITIONAL DATA				
SCALE (m)	Method	Run	Water	Depth/ (RL)metres	Graphic Log	Description ROCK TYPE, colour, grain size, structure (texture, mineral composition, hardness, alteration, cementation, etc. as applicable) and SOIL TYPE, colour, structure, minor components (origin)	Weathering	Estimated Strength	Core Recovery (%)	RQD (%)	Defect Spacing (mm)	Samples & Tests	Additional Data	SCALE (m)
		8		20.05 (73.55)		gravel is fine to medium, subangular to subrounded, black and cream (~10%) Sandy CLAY, trace gravel and cobbles, high plasticity, orange-brown, sand is fine to coarse grained, gravel is fine, subangular to subrounded, cobbles <150mm, subrounded, [Possibly Tcbu]							20.05m: Jt, 30°, Pln, Rf	
		9		21.75 (71.85)		with cobbles, MW, H strength dolerite up to 100mm [Possibly Tcbu]							SPT SPT @ 21.4m = 77/6*, N = R after 350mm (bouncing) Recovery = 350mm	
		10		21.90 (71.70)		SILTSTONE, orange-brown, trace gravel inclusions, gravel is fine to medium, subangular to subrounded, black, cream, orange (~10%), [Possibly Tcbu]	HW	VL-L		100			22.18m: Jt, 30°, Pln, Rf 22.31m: Jt, 70°, Pln, Rf 22.48m: Jt, 20°, Pln, Rf Fz: 22.55 - 22.6m, ~10mm	
	HQ Coring			23.10 (70.50)		Cobbles, HW-MW, M strength dolerite, orange-brown, Fe Sn, 100-200mm, [Possibly Tcbu]							Is(50) Is(50) (22.95m) = 0.24 MPa Dolerite boulders displaying weathering	
		11		23.65 (69.95)		CORE LOSS = 250mm								
				23.90 (69.70)		Boulder, HW, M strength dolerite, orange-brown and pale grey, [Possibly Tcbu]								
		12		24.25 (69.35)		SILTSTONE, orange-brown, trace gravel inclusions, fine to medium, subangular to subrounded (~10%), [Possibly Tcbu]	MW			100				
				24.40 (69.20)		Sandy CLAY, trace cobbles, medium plasticity, grey, orange, sand is fine to medium grained, ~20%, cobbles are 50-100mm, [Possibly Tcbu]								

GEO CORE LOG SHEET 12626209.GPJ_GHD_GEO_TEMPLATE_TASMANIA.GDT 13/9/24

See standard sheets for details of abbreviations & basis of descriptions



Job No. 12626209

CORE LOG SHEET

Client : Department of State Growth	LOCATION No. BH_K07	
Project : AFL Training Facility and High Performance Centre	SHEET 4 OF 4	
Location : Kingston Twin Ovals	Position : 522984.4 E, 5241785.3 N \	Surface RL : 93.60m
	Angle from Horiz. : 90°	Processed : OP
Contractor : South Western Drilling	Rig Type : Comacchio Geo 405	Checked : ASH
Date Started : 5 Jun 24	Date Completed : 6 Jun 24	Logged by : OP
		Date : 10 Sep 24

DRILLING				MATERIAL						ADDITIONAL DATA				
SCALE (m)	Method	Run	Water	Depth/ (RL)metres	Graphic Log	Description ROCK TYPE, colour, grain size, structure (texture, mineral composition, hardness, alteration, cementation, etc. as applicable) and SOIL TYPE, colour, structure, minor components (origin)	Weathering	Estimated Strength	Core Recovery (%)		Defect Spacing (mm)	Samples & Tests	Additional Data	SCALE (m)
									20	80				
	HQ Coring	12				grey, mottled orange						SPT	SPT @ 25.0m = 4/12/10, N = 22 Recovery = 450mm	
				25.45 (68.75)		EOH at 25.45m - Target depth reached. Standpipe installed upon completion. End of hole at 25.5 metres.							Standpipe Construction Details (mBGL): 0.0 - 0.3m: Gatic cover and concrete plug 0.3 - 21.0m: Backfill 21.0 - 21.5m: Bentonite Plug 21.5 - 25.0m: Sand 22.0 - 25.0m: Screen	
26														26
27														27
28														28
29														29
30														30

GEO CORE LOG SHEET 12626209.GPJ GHD_GEO_TEMPLATE_TASMANIA.GDT 13/9/24

See standard sheets for details of abbreviations & basis of descriptions



Job No. 12626209

SPT1 (0.9 - 1.35), N* = 8, 450 mm recovered



SPT2 (1.9 - 2.35), N* = 23, 450 mm recovered



SPT3 (3.4 - 3.85), N* = 56, 450 mm recovered



SPT4 (4.9 - 5.35), N* = 52, 450 mm recovered



	GHD Pty Ltd
	2 Salamance Square Hobart TAS 7000

Job Number 12626209	A4	Title Kingston	Client Department of State Growth
BH_K07		Photographic Record	

SPT5 (6.1 - 6.4), N* = R, 280 mm recovered



SPT6 (7.9 - 8.35), N* = 47, 450 mm recovered



SPT7 (9.4 - 9.85), N* = 55, 450 mm recovered



SPT8 (15.8 - 16.2), N* = R, 380 mm recovered



GHD Pty Ltd

2 Salamance Square Hobart TAS 7000

Job Number

12626209

A4

Title

Kingston

Client

Department of State Growth

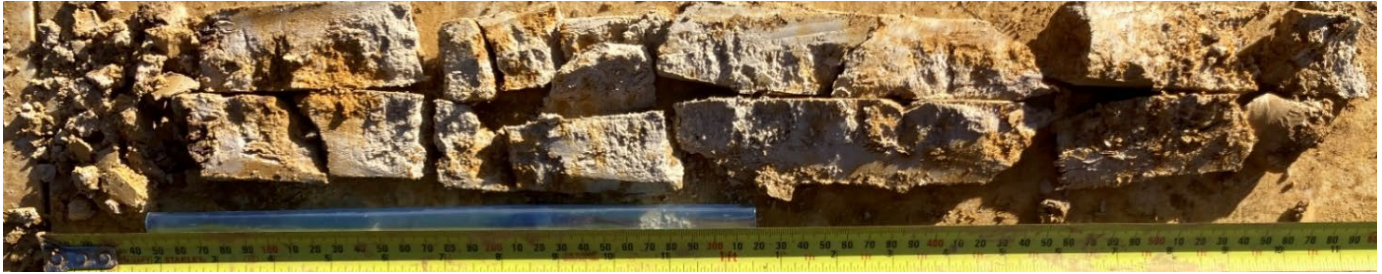
BH_K07


Photographic Record

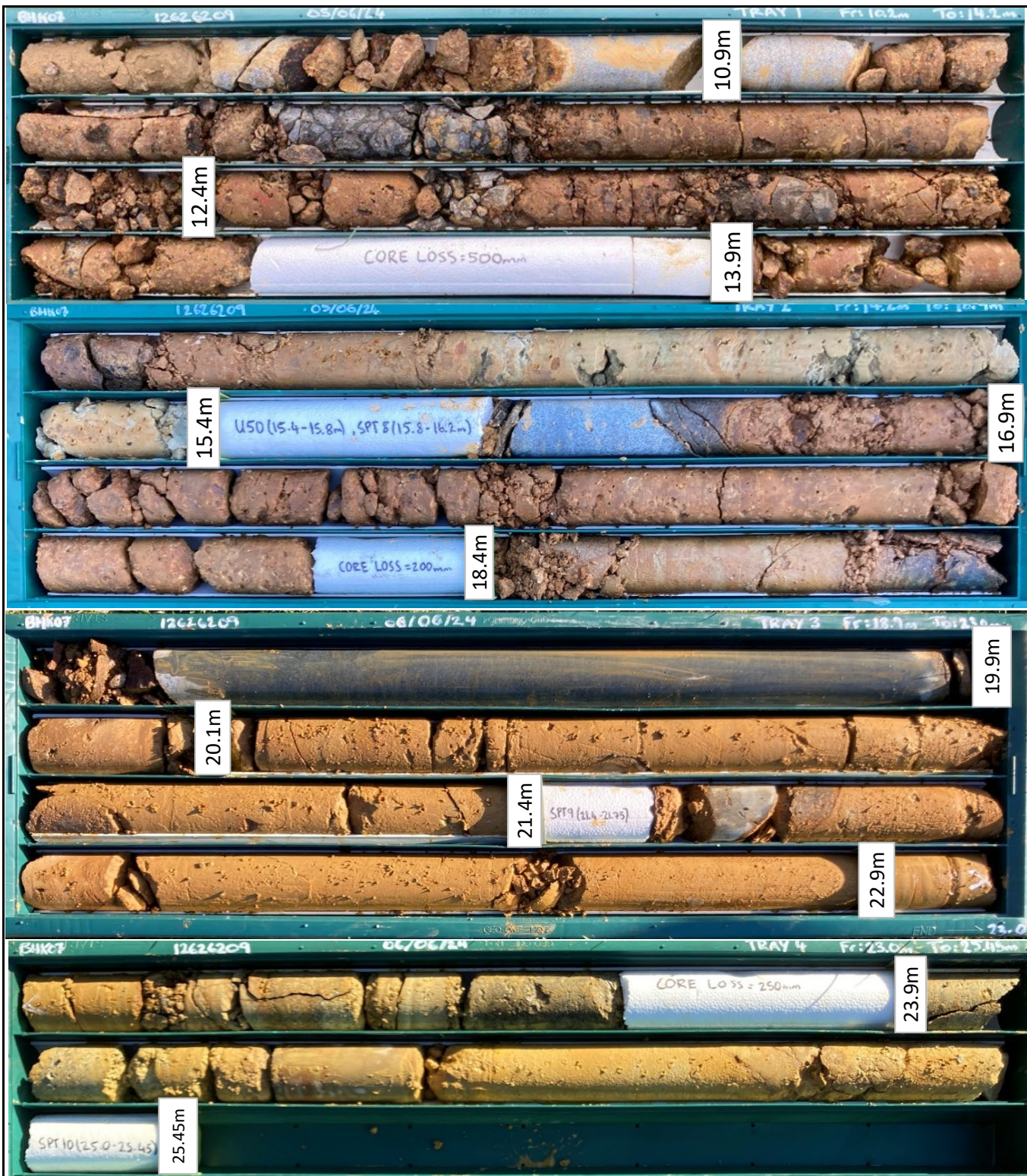
SPT9 (21.4 - 21.75), N* = R, 360 mm recovered




SPT10 (25.0 - 25.45), N* = 22, 450 mm recovered



				GHD Pty Ltd 2 Salamance Square Hobart TAS 7000
Job Number	12626209	Title	A4	Kingston
	BH_K07		Photographic Record	Department of State Growth



Job Number 12626209		Title A4	Kingston Photographic Record	 GHD Pty Ltd 2 Salamanca Square Hobart TAS 7000
BH_K07				