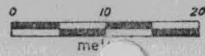


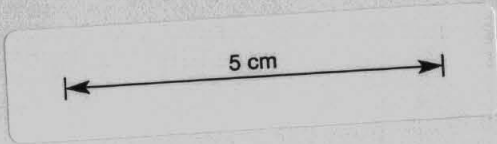
HOLE No. BT 141

SCALE:



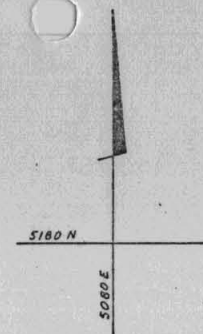
RENISON LIMITED
DIAMOND DRILL HOLE PLOT

BT 141

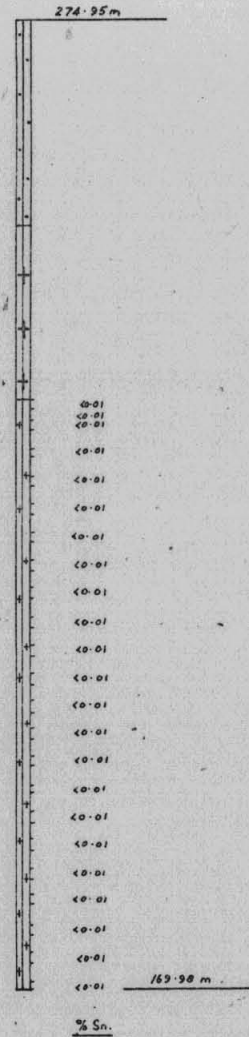


PLAN

⊗ 5188-19 N
5047-34 E



DIP PROFILE



892148

DIAMOND DRILL RECORD

HOLE NUMBER : BT 141

LOGGED BY : AFR

INTERVAL (m)		RECOVERY		DESCRIPTION	FORM.			% Sn.								
FROM	TO	m	%			FROM	TO	TOTAL	ACID SOL.	% Cu.	% As.				% Bi.	g/t Ag
<u>SUMMARISED LOG</u>						40.9	42.0	<0.01								
0	22.0			NON-CORING AND LOW RECOVERY OF PORPHYRITIC ADAMELLITE.		42.0	43.0	"				From	To	% Sn		
												88.0	89.0	<0.01		
22.0	40.9			MAINLY PORPHYRITIC ADAMELLITE WITH NARROW ZONES OF ALTERATION, OR APLITE. (POIMENA ADAMELLITE).		43.0	44.0	"				91.0	92.0	"		
												94.0	95.0	"		
	40.9			CONTACT												
						49.0	50.0	"				97.0	98.0	"		
40.9	104.0			ESSENTIALLY UNALTERED ALKALI GRANITE WITH MINOR ZONE OF ALTERATION NEAR UPPER CONTACT. (ANCHOR GRANITE)		52.0	53.0	"				100.0	101.0	"		
												103.0	104.0	"		
						58.0	59.0	"				Sn assays by Mines Dept. Launceston (XRF)				
<u>DETAILED LOG</u>						61.0	62.0	"								
0	15.0	0	0	Tricone. No recovery.		64.0	65.0	"								
15.0	18.0	0.2	67	Fragments of grey aplite and pegmatite.		67.0	68.0	"								
18.0	22.0	0.4	100	Fragments of weathered crumbly porphyritic adamellite.		70.0	71.0	"								
22.0	23.8	1.8	100	Pink-grey, partly weathered porphyritic adamellite and minor aplite.		73.0	74.0	"								
23.8	25.0	1.2	100	Grades into altered but pinkened porphyritic adamellite with diffuse feldspathic texture about an 8cm aplite sericite vein at 50°C.A.		76.0	77.0	"								
25.0	26.1	1.1	100	Grades back to pink-grey slightly argillised fresh porphyritic adamellite.		79.0	80.0	"								
						82.0	83.0	"								
26.1	26.9	0.8	100	Zone of pink-grey aplite, weak layering at 90°C.A. Broken core.		85.0	86.0	"								
26.9	27.1	0.2	100	Pinkened porphyritic adamellite.												
27.1	27.7	0.6	100	Altered P.A. with grey aplite greisen. No mineralization.												
27.7	29.4	1.7	100	Grades back into pink-grey slightly argillised P.A.												
29.4	32.4	3.0	100	Zone of pinkish grey aplite and mixed with adamellite (perhaps?) as in BT 140. No definite P.A. textures. Mixed rock. Zones of grey aplitic greisen as zones of weak veinlets.												

892149

DIAMOND DRILL RECORD

HOLE NUMBER : BT 141

LOGGED BY : AFR

INTERVAL (m)		RECOVERY		DESCRIPTION	FORM	% Sn.										
FROM	TO	m	%			FROM	TO	TOTAL	ACID SOL.	% Cu.	% As.	% S.	% Pb.	% Zn.	% Bi.	g/t Ag
32.4	32.7	0.3	100	Grades into grey greisenised P.A. Very broken core.												
32.7	40.6	7.9	100	Zone of porphyritic adamellite, although containing zones of alteration as aplitic-feldspathic alteration. Mainly pink-grey diffuse textured P.A. Slight argillisation. From 37.3 to 38.5 is very intense pink alteration. Last 60 cms contains pegmatite and aplitic segregations.												
40.6	40.9	0.3	100	Contact pegmatite and quartz.												
	40.9			CONTACT												
40.9	43.4	2.5	100	Dark grey intensely altered, greisenised fine grained alkali granite. Feldspars are weakly discernible. Alteration style is not indicative of usual cassiterite mineralization. Rare pegmatite segregation to 2cm wide.												
43.4	55.5	12.1	100	Grades into monotonous cream-grey fine to medium grained alkali granite. No significant alteration. Weak minor zones of magmatic pinkening. Rare sericite coating on joints.												
55.5	61.8	6.3	100	Grades into a medium grained alkali granite. Grey-cream. Weak sericitic clay joints. No significant alteration.												
61.8	68.0	6.2	100	Grey cream alkali granite with intense sericite clay coatings on joints. Pegmatite (5cm) from 63.95 to 64.0m. Several joints coated with fluorite.												
68.0	68.5	20.5	100	Fresh competent cream-grey medium grained alkali granite.												
88.5	104.0	15.5	100	Grades into a medium to coarse grained alkali granite. Weak zones of pink-cream granite. No significant alteration. One or two rare aplite veins at 30° CA up to 3cms wide.												
				END OF HOLE 104m.												

892150