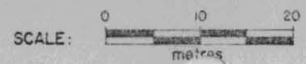
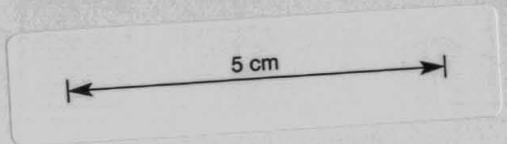


HOLE No: BT 144

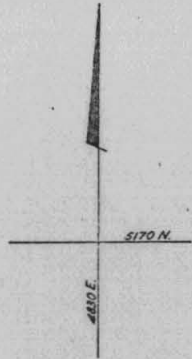



RENISON LIMITED DIAMOND DRILL HOLE PLOT

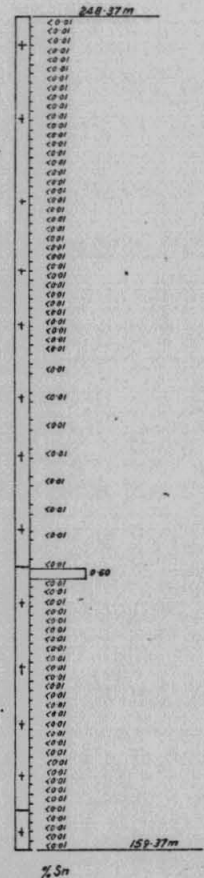
BT 144



PLAN



 5193.36 N.
4860.55 E.



DIP PROFILE

blotchy mica
Xeno. pyroclastic.

892162

DIAMOND DRILL RECORD

HOLE NUMBER : BT 144

LOGGED BY : A.F.R.

RWFS

INTERVAL (m)		RECOVERY		DESCRIPTION	FORM.	% Sn.										
FROM	TO	m	%			FROM	TO	TOTAL	ACID SOL	% Cu.	% As.	% S.	% Pb.	% Zn.	% Bi.	g/t Ag
				SUMMARISED LOG		0	1	<0.01								
						1	2	"								
0	59.0			WEATHERED TO FRESH ALKALI. NO SIGNIFICANT ALTERATION. (ANCHOR GRANITE).		2	3	"								
						3	4	"								
						4	5	"								
59.0	84.9			COMPLEX ZONE CONSISTING OF PEGMATITIC ROCKS, ALTERED UNUSUALLY TEXTURED ALKALI GRANITE - GREISEN		5	6	"								
						6	7	"								
						7	8	"								
84.9	89.0			MEDIUM GRAINED ALKALI GRANITE.		8	9	"								
						9	10	"								
						10	11	"								
				DETAILED LOG		11	12	"								
						12	13	"								
0	1.3	1.3	100	Fragments of cream alkali granite, grey-pink mixed contact rock. Weathered.		13	14	"								
						14	15	"								
						15	16	"								
1.3	6.8	5.5	100	Weathered limonitic stained cream, fine grained alkali granite and microgranite. No obvious alteration, except weak sericitic.		16	17	"								
						17	18	"								
						18	19	"								
6.8	11.2	4.4	100	Slightly more medium grained alkali granite-weak sericite greisen with several zones limonitic weathered material.		19	20	"								
						20	21	"								
						21	22	"								
11.2	17.4	6.2	100	Out of limonitic weathered material. Grey cream alkali granite - weak greisen. Several clayey joints.		22	23	"								
						23	24	"								
						24	25	"								
17.4	27.5	10.1	100	Greyish alkali granite with diffuse zones of slightly more siliceous and finer grained alkali granites. Generally unaltered.		25	26	"								
						26	27	"								
						27	28	"								
27.5	41.5	14.0	100	Grades into a uniform monotonous medium grained grey-cream alkali granite with several, minor zones of siliceous finer grained granite. No significant alteration.		28	29	"								
						29	30	"								
						30	31	"								
						31	32	"								
41.5	47.0	5.5	100	As before but with slight pink-cream colour. Very competent core.		32	33	"								
						33	34	"								
47.0	53.0	6.0	100	Increase in pink colouration. Medium grained alkali granite.		34	35	"								
						35	36	"								
53.0	56.5	3.5	100	Medium grained alkali granite with zones of intense scarlet colouring.		37	38	<0.01								
						38	39	<0.01								
56.5	59.0	2.5	100	Grades into pink-cream alkali granite.		39	40	<0.01								
						40	41	<0.01								
						41	42	<0.01								
						42	43	<0.01								
						43	44	<0.01								
						44	45	<0.01								
						45	46	<0.01								
						46	47	<0.01								
						47	48	<0.01								
						48	49	<0.01								
						49	50	<0.01								
						50	51	<0.01								
						51	52	<0.01								
						52	53	<0.01								
						53	54	<0.01								
						54	55	<0.01								
						55	56	<0.01								
						56	57	<0.01								
						57	58	<0.01								
						58	59	<0.01								
						59	60	<0.01								
						60	61	<0.01								
						61	62	<0.01								
						62	63	<0.01								
						63	64	<0.01								
						64	65	<0.01								
						65	66	<0.01								
						66	67	<0.01								
						67	68	<0.01								
						68	69	<0.01								
						69	70	<0.01								
						70	71	<0.01								
						71	72	<0.01								
						72	73	<0.01								
						73	74	<0.01								
						74	75	<0.01								
						75	76	<0.01								
						76	77	<0.01								
						77	78	<0.01								
						78	79	<0.01								
						79	80	<0.01								
						80	81	<0.01								
						81	82	<0.01								
						82	83	<0.01								
						83	84	<0.01								
						84	85	<0.01								
						85	86	<0.01								
						86	87	<0.01								
						87	88	<0.01								
						88	89	<0.01								
						89	90	<0.01								
						90	91	<0.01								
						91	92	<0.01								
						92	93	<0.01								
						93	94	<0.01								
						94	95	<0.01								
						95	96	<0.01								
						96	97	<0.01								
						97	98	<0.01								
						98	99	<0.01								
						99	100	<0.01								

892163

