

RENISON LIMITED - DRILL CORE RECORD

HOLE NUMBER	BT 92	SURVEY			From - To	Distance D	VERTICAL		HORIZONTAL	
		Depth	Bearing	Dip			D.Sin.Dip	R.L.	D.Cos.Dip	Prog. Total
PURPOSE	To investigate further the deeply occurring mineralization encountered in BT42	5m	(inside casing)	43°	0			326.4		
		41m	126° mag	43°	0-70	70	47.74	278.7	51.2	51.2
		106m	126° mag	42.5°	70-130	60	40.54	239.1	44.2	95.4
		160m	126° mag	42°	130-161	31	19.9	219.2	22.8	118.2
LOCATION	ANCHOR MINE									
COLIAR R.L.	326.4 m									
COORDINATES	5498mN ; 5097mE									
LENGTH	161.0m									
HOLE SIZE	0 - 27.0m H.Q. 27.0 - 36.0m N.Q. 36.0 - 161.0m B.Q.									
DATE DRILLED	10.7.80 - 16.7.80									
SIGNIFICANT CORE LOSS ZONES										
ORE ZONE GROUND CONDITIONS										
LOGGED BY	LINDA MARTIN									
COMMENTS	Significant mineralisation encountered as at the same low level of hole BT 42.									

SUMMARY - ASSAY DATA

LODE NAME	FROM	TO	LENGTH (m)	AVERAGE WEIGHTED ASSAYS											B.C.A.
				Sn.	Acid Sol. Sn.	Cu.	As.	S.	Pb.	Zn.	Bi.	WO ₃	Ag g/t		
0.2% Cut Off	68	74	6m (E.T.T. 4.1m)	0.28											
	82	107	25m (E.T.T. 17m)	0.37											
	119	124	5m (E.T.T. 3.2m)	0.24											
0.1% Cut Off	64	74	10m (E.T.T. 6.8m)	0.20											
	81	129	48m (E.T.T. 37.7m)	0.26											
	134	136	2m (E.T.T. 1.4m)	0.13											
	149	151	2m (E.T.T. 1.4m)	0.11											

038089

E No. 87 92

SCALE:

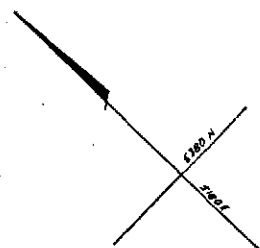
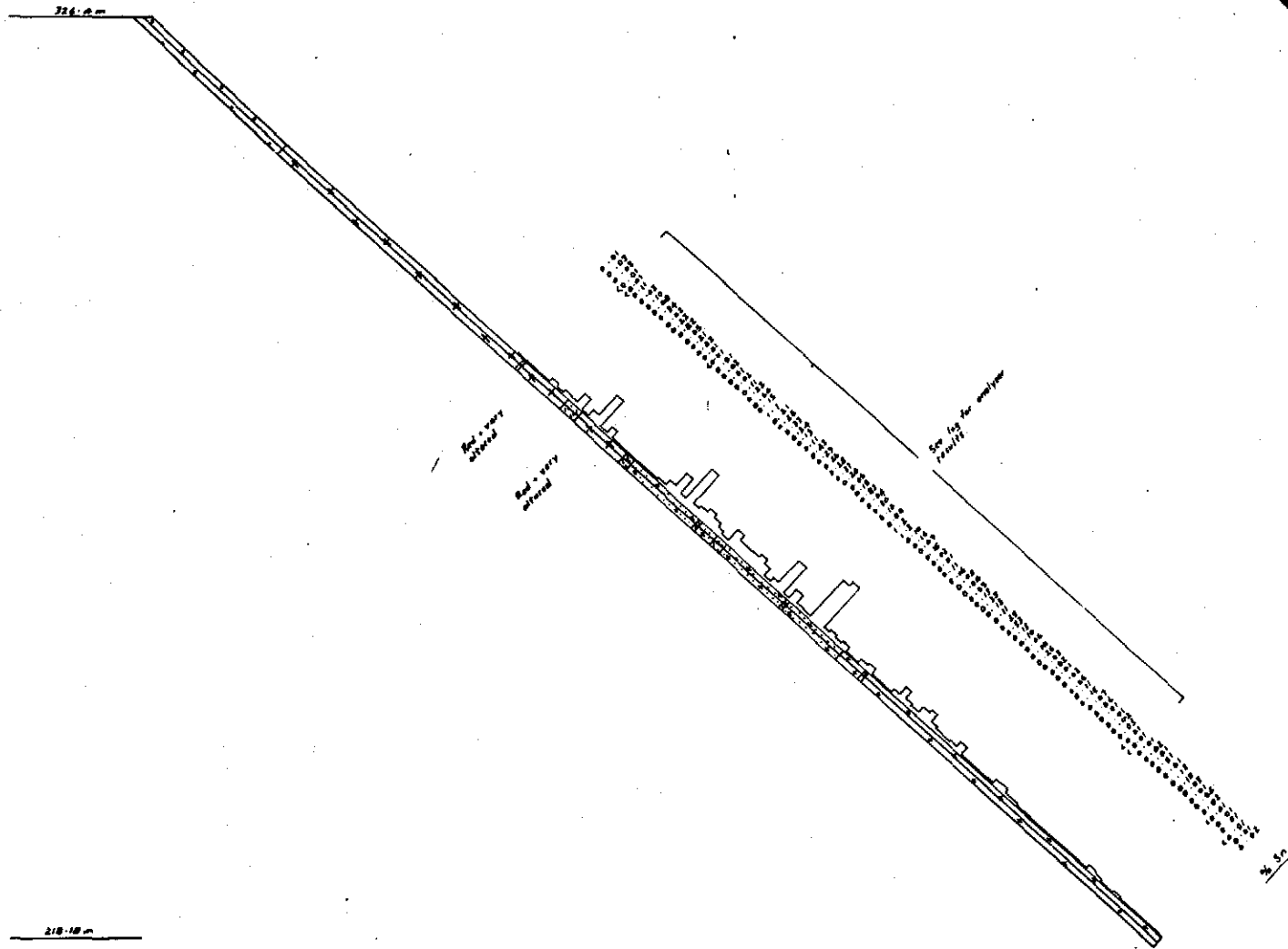


DIAMOND DRILL HOLE PLOT

6600-M
2507-2

6012-M
619-2

5 cm



038090

DIAMOND DRILL RECORD

HOLE NUMBER : BT 92

LOGGED BY : L. MARTIN

NWPS

INTERVAL (m)		RECOVERY		DESCRIPTION	FORM.	% Sn.										
FROM	TO	m	%			FROM	TO	TOTAL	ACID SOL.	% Cu.	% As.	% S.	% Pb.	% Zn.	% Bi.	g r Ag
0	22.5	-	-	SAND: Coarse grained, yellowish iron-oxide stained.												
22.5	60.3	3.6	72	POIMENA GRANITE: 22.5 - 27.5m: Coarse grained, porphyritic, light brown to pink weathered rock with pink feldspars. Fractured core with iron oxide staining on fracture surfaces. Aplite Vein at 22.9m, fine grained green at 50°, with 2cm wide reaction halo of dark grey hard Poimena granite. Core very fractured. Several Aplite Veins at 25.9 - 27.5m, fine grained, green, subvertical to 80°, with dark grey reaction halo of Poimena granite. Core very fractured and crumbly with much yellow clay filled veins.												
		3.33	90	27.5 - 31.2m: Light pink to grey, altered rock with minor fresh biotite in zones. Grey hard and fresh Poimena granite at 30.22 - 30.34, 30.44 - 30.55m. Aplite Vein at 30.08 - 30.23, fine grained, light grey at approx. 50° with no dark grey reaction selvage.												
		0.14	100	31.21 - 31.35m: Dark green-grey altered and greisenized zone of coarse grained Poimena granite. Vague gradational boundaries at approx. 45°.												
		4.65	100	31.35 - 36.0m: Pink to grey Aplite to fine grained greisenized granite vein at 35.56 - 35.68 light grey with vague gradational boundaries at approx. 20°. Minor zone of dark grey Poimena granite as a selvage. Aplite Vein at 36.23 - 36.54m, dark purplish-brown, with minor fragments of pink coarse grained feldspar to 2cm diameter. Upper boundary is sharp and irregular at approx. 20° while lower boundary is sharp at 45°. Altered Aplite Vein at 38.3 - 38.4m, light grey-brown, fine grained and 'sugary' textured with vague banding. Sharp boundaries upper at 35°, lower at 25°.												
		6.0	100	36.0 - 42.0m: Medium pink to grey with pink feldspars.												
		2.2	100	42.0 - 44.2m: Dark strong pink to grey rock with dark pink feldspars.												
		2.28	100	44.2 - 46.48m: Medium grey hard rock. Aplite - Pegmatite Vein at 46.37 - 46.48m, comprised of a band of coarse grained quartz and minor feldspar, between two bands of light grey aplite. Sharp boundaries at 45°.												
		2.42	100	46.48 - 48.9m: Pink to grey rock with minor zones of very bright pink altered feldspars. Greisenizing Veins, <1mm wide, oriented at 40° have alteration selvages of black biotite and dark grey quartz. At 46.87 - 46.94m the selvage is 5-6cm wide and at 47.62 - 47.95 it is 10cm wide (true width).												

038091

DIAMOND DRILL RECORD

HOLE NUMBER : BT 92

LOGGED BY : L.MARTIN

NWPS

INTERVAL (m)		RECOVERY		DESCRIPTION	FORM	% Sn.										
FROM	TO	m	%			FROM	TO	TOTAL	ACID SOL.	% Cu.	% As.	% S.	% Pb.	% Zn.	% Bi.	g/t Ag
		4.35	100	48.9 - 53.25m: Light grey, slightly pinkish in places. Greisen veins of very fine grained, light grey 'sugary' textured rock at 49.74 - 49.85m and at 49.90 - 50.01m. Slightly irregular sharp boundaries at approximately 40°. Black biotite and dark grey quartz greisenized zone at 52.24 - 52.36m with gradational irregular boundaries.												
		6.4	100	53.25 - 59.65m: Pinkish rock, very altered and crumbly in places. Greisen Vein at 54.50 - 54.70m composed of light green altered 'sugary' textured rock with gradational boundaries at approx. 15° (vein is 4cm wide). Pegmatite Zone at 55.31 - 55.60m, of coarse grained quartz, light pink feldspar, light green altered muscovite, and dark green altered biotite. Gradational irregular boundaries. Greisenizing Veins oriented at 40°, are 1cm wide at 56.11m and <1mm wide at 56.32m. The surrounding coarse grained granite is enriched in black biotite, altered and very crumbly from 55.95-56.38m, with feldspar altered to light green clays. Black biotite and dark grey quartz greisenized zones at 58.35 - 58.47m and at 59.3 - 59.5m.												
		0.65	100	59.65 - 60.3m: Greisenized zone of altered dark green biotite and dark grey quartz. Gradational upper boundary; sheared irregular lower boundary at approx. 15°.	NUTMAG	RESULTS	FIR COMPARISON (MAG)									
							Mines Department Assays Reg. No's 802187 - 802189 + 802047 - 802145									
60.3	60.5	0.2	100	FELDSPAR - MICA ROCK: Fine grained light pink feldspar rock with spots of light green altered mica. Gradational boundaries.		59	60	0.01								
							61	0.03								
							62	0.03								
							63	<0.01								
60.5	67.08	6.58	100	VERY ALTERED COARSE GRAINED GRANITE: Zones of coarse grained grey quartz in a matrix of very fine grained bright red feldspar, with minor altered light green mica and black to dark green specks of biotite. Grades to fine grained zones and to zones rich in dark green altered biotite at 65.6 - 65.85 and 66.14 - 66.5m. Gradational to:	<0.10		64	<0.01								
					0.16		65	0.11								
					0.12		66	0.03								
					0.08		67	0.10								
					0.22		68	0.08								
					0.40		69	0.34								
					0.05		70	0.02								
67.08	67.44	0.36	100	FELDSPAR - MICA ROCK: Fine grained medium pink feldspar rock with medium green altered micas, similar to rock at 60.3 - 60.5m. Gradational boundaries.	0.30		71	0.22								
					1.39		72	0.82								
					0.08		73	0.05								
67.44	68.6	1.16	100	VERY ALTERED COARSE GRAINED GRANITE: 67.44 - 67.58m: Description as for 60.5 - 67.08. 67.58 - 68.6m: Medium grained, medium green altered granite very rich in medium green altered mica and grey quartz, with very minor red feldspar spots.	0.18		74	0.21								
					1.13		75	0.03								
					-		76	0.01								
					<0.10		77	<0.01								
					<0.10		78	0.01								
					<0.10		79	0.02								
68.6	69.32	0.72	100	FELDSPAR - MICA ROCK: Description as for 67.08 - 67.44m. (Pet 68.0 - 68.06m)	<0.10		80	0.01								

038092

DIAMOND DRILL RECORD

HOLE NUMBER : BT 92

LOGGED BY : L. MARTIN

NWPS

INTERVAL (m)		RECOVERY		DESCRIPTION	FORM. NUMBER	% Sn.										
FROM	TO	m	%			FROM	TO	TOTAL	ACID SOL.	% Cu.	% As.	% S.	% Pb.	% Zn.	% Bi.	g/t Ag
69.32	76.48	7.16	100	<u>VERY ALTERED MEDIUM GRAINED GRANITE:</u>	0.16	80	81	0.02								
				69.32 - 70.46m: Medium grained, light to medium pink altered granite.	0.15		82	0.11								
				Description similar to unit at 60.5 - 67.08. Gradational boundaries.	0.25		83	0.22								
				70.46 - 76.48m: Dark green altered granite rich in dark green mica	0.55		84	0.64								
				and dark grey quartz, similar to unit at 67.58 - 68.6m. Pinkish in	0.20		85	0.15								
				places with a bright red zone at 72.92 - 72.76. Very crumbly core at	0.74		86	1.1								
				74.35 - 76.48m. (Pet 70.52-70.59m)	0.21		87	0.21								
					0.80		88	0.25								
76.48	77.7	1.22	100	<u>FELDSPAR - MICA ROCK:</u> Fine grained light pink feldspar rock with	0.41		89	0.33								
				flakes of light green altered mica. Some light green mica rich	0.34		90	0.24								
				zones. Fine pyrite nodules on fracture surfaces. Gradational	0.30		91	0.19								
				boundaries. (Pet 76.61-76.67m)	0.10		92	0.11								
					0.49		93	0.43								
77.7	87.95	10.25	100	<u>LOTTAH GRANITE - GREISEN:</u> Fine grained, medium to light green,	0.40		94	0.29								
				altered and 'sugary' textured. Harder and more greisenized in some	0.38		95	0.26								
				zones, crumbly in other zones. Minor spots of brown cassiterite	0.37		96	0.28								
				and purple bornite. Dark green mica rich altered zone at 84.72-	0.42		97	0.37								
				87.86m. (Pet 82.61-82.65m)	0.30		98	0.24								
					0.10		99	0.06								
87.95	88.30	0.35	100	<u>FELDSPAR - MICA ROCK:</u> Fine grained light pink to cream feldspar	0.18		100	0.15								
				rock with light green olive altered mica. Gradational boundaries.	0.41		101	0.32								
					0.16		102	0.04								
88.30	90.95	2.65	100	<u>LOTTAH GRANITE - GREISEN:</u>	0.19		103	0.30								
				88.30 - 88.61m: Medium grained, light grey-pink, slightly altered.	0.18		104	0.10								
				88.61 - 89.70m: Dark green mica rich zone, gradational boundaries.	0.10		105	0.04								
				89.70 - 90.10m: Light grey-pink similar to 88.30 - 88.61m.	0.32		106	1.2								
				90.10 - 90.47m: Dark green mica rich zone, as for 88.61 - 89.70m.	1.37		107	1.3								
				90.47 - 90.95m: Dark grey to pink zone, gradational boundaries.	0.10		108	0.10								
					0.22		109	0.16								
90.95	92.33	1.38	100	<u>FELDSPAR - MICA ROCK:</u> Fine grained medium pink to bright red	0.15		110	0.09								
				feldspar rock with minor light green altered mica flakes, and black	0.20		111	0.15								
				spots of biotite. Gradational boundaries.	0.10		112	0.02								
					0.18		113	0.01								
92.33	101.9	9.57	100	<u>VERY ALTERED LOTTAH GRANITE-GREISEN:</u>	0.25		114	0.11								
				92.33 - 93.6m: Fine to medium grained, altered bright pink to red	0.10		115	0.15								
				granite, with altered pinkish feldspars, grey quartz and dark	0.10		116	0.02								
				green altered micas; some mica rich zones. Grades into zones of	0.10		117	0.04								
				red feldspar-mica rock at 92.98 - 93.23m and 93.34 - 93.42m.	0.20		118	0.03								
				93.6 - 101.9m: Medium to dark green mica rich rock with minor	0.16		119	0.13								
				pinkish zones near upper unit at 93.8 - 94.48 and 94.8 - 95.05m,	0.44		120	0.35								
				and with light brown mica poor greisenized zones at 97.55 - 98.85m,												
				100.2 - 100.4m and 101.2 - 101.9m. (Pet 96.78-96.82m)												

038093

DIAMOND DRILL RECORD

HOLE NUMBER : ST 92

LOGGED BY : L. MARTIN

NW3

INTERVAL (m)		RECOVERY		DESCRIPTION	FORM. NUMBER	% Sn.											
FROM	TO	m	%			FROM	TO	TOTAL	ACID SOL.	% Cu.	% As.	% S.	% Pb.	% Zn.	% Bi.	g/t Ag	% WO ₃
101.9	102.34	0.44	100	FELDSPAR MICA ROCK: Fine grained, cream feldspar rock with light green altered mica flakes. Gradational boundaries.	0.62	120	121	0.15									
					0.37		122	0.11									
					0.62		123	0.25									
102.34	110.79	8.45	100	LOTTAH GRANITE GREISEN: Fine to medium grained, hard, medium to dark green mica rich rock. Granite zone with coarse grained dark green altered biotite 'books' at 105.47 - 106.2m. Gradational boundaries. (Pet. 108.04 - 108.09m)	0.66		124	0.33									
					0.45		125	0.13									
					0.58		126	0.10									
					0.10		127	0.06									
110.79	114.4	3.61	100	ALTERED LOTTAH GRANITE: Fine to medium grained, light yellowish green and altered. Fairly fractured and crumbly in places. Dark green zones richer in mica occur at 113.2 - 113.45m and 114.05 - 114.4m.	0.27		128	0.10									
					0.36		129	0.26									
					0.10		130	0.03									
					0.10		131	0.02									
114.4	114.93	0.53	100	APLITE: Very fine grained, light yellowish green, with minor spots of black biotite. Gradational upper boundary, sheared lower boundary at 10° with yellow clay infilling the shear.	0.10		132	0.01									
					0.10		133	0.03									
					0.12		134	0.06									
					0.30		135	0.11									
114.93	161.0	46.07	100	LOTTAH GRANITE: 114.93 - 128.7m: Fine grained, medium greenish yellow, altered; some slightly darker and more altered zones. Minor light brownish - yellow clay filled fractures. (Pet. 119.20 - 119.25m) (Pet. 123.74 - 124.0m) Altered darker Green Zone with two quartz-green biotite-pegmatite veins 1cm wide, oriented at 50°, at 125.89m and 125.97m. Aplite Vein of fine grained medium green rock at 128.93 - 129.01m, with diffuse contacts at approx. 40°. 128.7 - 161.0m: Fine grained, greenish yellow, slightly altered. Minor yellow clay filled fractures. (Pet. 128.19 - 128.85m) Fine Grained Aplite Zone at 133.13 - 133.27m, of medium greenish grey rock, with gradational boundaries at approx. 85-90°. Yellow talc filled fracture oriented at 5° at 132.15 - 132.5, 2cm wide.	0.31		136	0.15									
					0.20		137	0.07									
					0.14		138	0.06									
					0.10		139	0.01									
					0.10		140	0.01									
					0.10		141	0.02									
					0.10		142	0.03									
					0.10		143	0.01									
					0.10		144	0.01									
							145	0.01									
							146	0.02									
							147	0.01									
							148	0.01									
							149	0.01									
				END OF HOLE.			150	0.12									
							151	0.10									
							152	0.03									
							153	0.01									
							154	0.05									
							155	0.02									
							156	0.01									
							157	0.01									
							158	0.01									
							159	0.01									
							160	0.01									
							161	0.02									

038094