

COMALCO LIMITED
DRILL HOLE LOG

5 cm

TAS-78-118

HOLE No: TSD 1

LOCATION:
COMALCO Co-ORDS
875 S/500W

CORE SIZE: 0-1.5H
1.5-61.80 NQ
61.80-218.20 BQ

DATE DRILLED: 1980
LOGGED BY: P. ASKINS
SCALE: 1:250

PROJECT: TIN SPUR

ORIENTATION: -70° towards 045°M
66° at 50m; 60° at 100; 58° at 150; 54° at 200m

photographed: yes

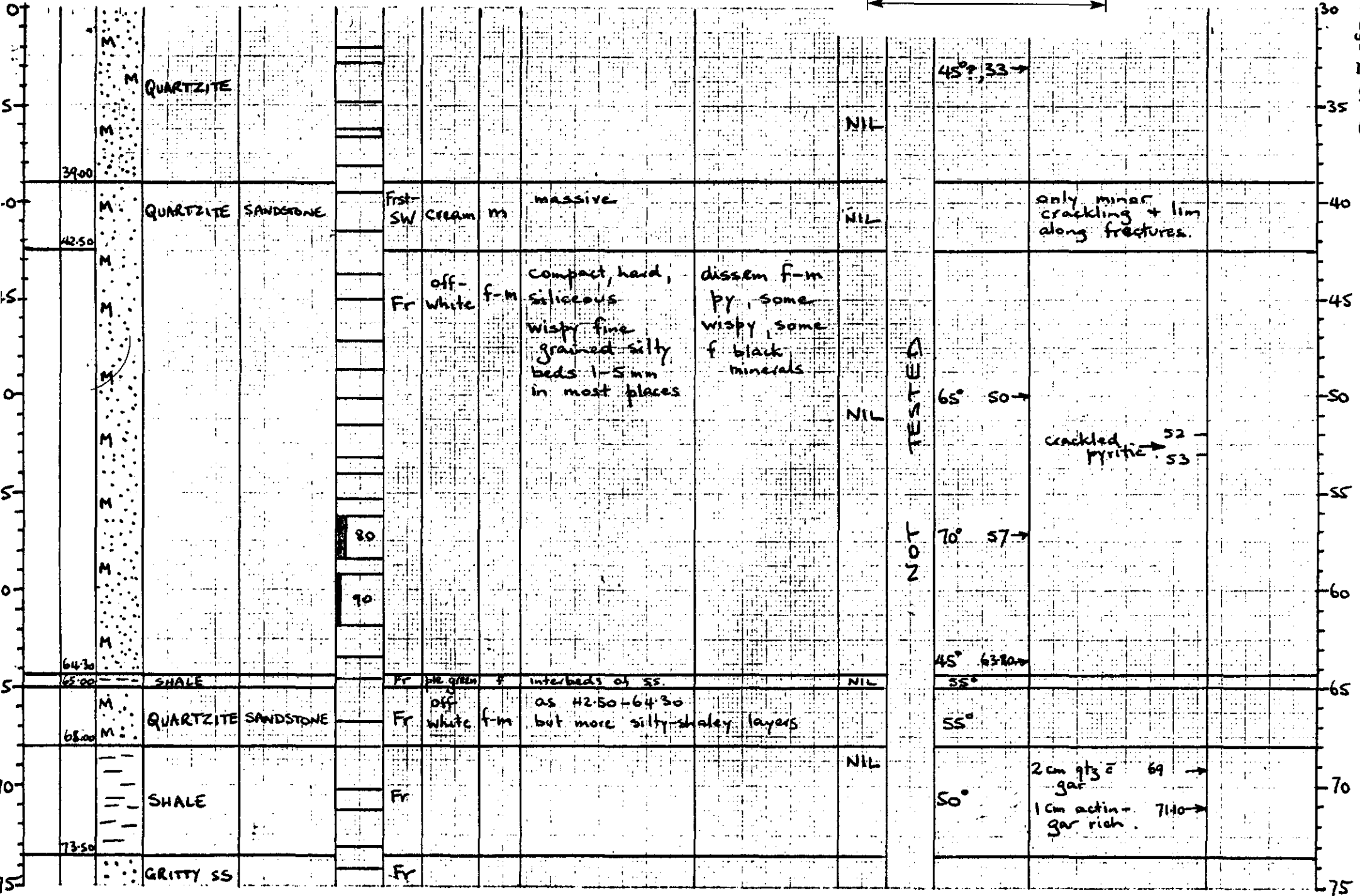
FROM	TO	GRAPHIC LOG	ROCK NAME	ORIGINAL ROCK (if different to rock name)	RECOVERY	WEATHERING	COLOUR	GRAIN SIZE	FABRIC TEXTURE COMPOSITION	MINERALIZATION (Sulphides cosiderite etc)	SCHHEELITE by UV lamp	reaction to dilute HCl	BEDDING	FRACTURES BRECCIATION VEINING ETC	REMARKS
0	7.00		SANDSTONE		74 75 80	SW-MW	off-white to iron stained orange	fm	Typical Moira sandstone Well bedded in places	limonite after pyrite on joints and disseminated	NIL		80° S-40° →		
7.00	9.00					Frst SW	blue				NIL			very cracked much py or limonite	
9.00	18.75					SW-MW			as at 0-7.00 but no obvious bedding.		NIL				
18.75	19.80		SILTSTONE		71 104 30	HW	blue	ff	Soft, clayey		NIL				
19.80	26.00		SANDSTONE			SW			as at 0-7.00		NIL		80° 22° →		
26.00			QUARTZITE SANDSTONE			Frst SW	off white, iron stained	m	hard, recrystallized		NIL		80° 28° →	very cracked with much lim. along fractures +/or bedding	

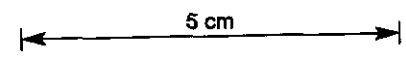
TESTED

NOT

5 cm

5 cm





77.20	GRITTY SS	Fr	grey	m-cr	quartzite with scattered sub-angular grains of white quartz to 5 mm. Poorly bedded.	NIL			
79.40		Fr	dk grey to reddish	m-cr	ditto plus rounded concentric red pebbles (pisolites?)	NIL			
80.10	SHALE	Fr	grey purple		Some gritty beds	NIL	80°		poor recov. due barrel failure
85.00	GRITTY SS	Fr	pale greenish	m-cr	Similar to above but altered	NIL			
86.00		Fr	dk grey to greenish	m-cr	Irreg folded + fractured bedding, alt incl.	NIL			
88.80		Fr	dk grey to greenish	m-cr	Variably altered	NIL	poorly bedded 50°	irreg minor qtz veinlets	
89.80		Fr	pale greenish	m-cr	shale interbedded	NIL	80°		
92.00		Fr	pale grey	m-cr	altered	NIL		irreg minor qtz veinlets	
93.50		Fr	dark grey	m-cr	unaltered	NIL			
94.80	SHALE	Fr	purple	f-m	interbedded irreg wispy dk purple ss	NIL	20°		
95.00	QUARTZITE	Fr	off white to greenish purple patches	m	purple patches unaltered; remainder ?altered.	NIL	ill defined		
102.00					scattered minor qtz with py trace ct coatings				
112.00		Fr	off white	m	cleaner purer more massive	NIL		gashy white qtz veinlets	
116.30		Fr		m	as 95 - 112	NIL			
117.80		Fr		m	as at 112-116.30	NIL			

NOT TESTED

