

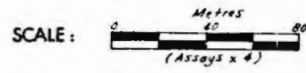
RENISON LIMITED - DRILL CORE RECORD

HOLE NUMBER	S495	SURVEY			From - To	Distance D	VERTICAL		HORIZONTAL	
		Depth	Bearing	Dip			D.Sin.Dip	R.L.	D.Cos.Dip	Prog.Total
PURPOSE	To test coincident I.P., Geochem, and magnetic anomalies on Line 13, Argent Grid.	Collar	065°23'	-52°11'	0-30.25	30.25	23.9	2236.0	18.6	18.6
		60.5	NA	-51.5°	- 75.75	45.5	35.7	2200.3	28.3	46.9
LOCATION	Line 13, Argent Grid, EL42/71	91.0	069°	-44°	-100.5	24.75	17.2	2187.1	17.8	64.7
		110.0	069°	-50°	-142.5	42.0	32.2	2150.9	27.0	91.7
COLLAR R.L.	2259.89	175.0	069°	-47.5°	-194.0	51.5	38.0	2112.9	34.8	126.5
		213.0	058°	-43.5°	-228.3	34.3	23.6	2089.3	24.9	141.4
CO-ORDINATES	N 19127.72 ; E 14418.95	243.6	069°	-43°	-256.8	28.5	19.4	2069.9	20.8	172.2
		270.0	067°	-43°	-287.3	30.5	20.8	2049.1	22.3	194.5
LENGTH	400.1m	304.6	065°	-43°	-319.8	32.5	22.2	2026.9	23.8	218.3
		335.0	061°	-42°	-350.3	30.5	20.4	2006.5	22.7	241.0
HOLE SIZE	0 - 3.0m triconed 3.0 - 67.3m NQ 67.3 - 400.1m BQ	365.6	059°	-41°	-377.8	27.5	18.0	1988.5	20.7	261.7
		390.0	058°	-41.5°	-400.1	22.3	14.8	1973.7	16.7	278.4
DATE DRILLED	22/3/78 - 6/4/78									
SIGNIFICANT CORE LOSS ZONES	5m recoveries									
ORE ZONE GROUND CONDITIONS										
LOGGED BY	L. D. Bond									
COMMENTS	<p>Appears to have collared in Dalcoath Member, and passed through fault into ?Donah Fmtn at 203.7m</p> <p>Intersected strongly pyritic tourmalinized zone in turbidite 321.4 - 338.4m, and sphalerite 329-333m</p> <p>Magnetic susceptibility of core was measured at 1.0m intervals, and found to be less than 0.2cgs units throughout, except for a reading of 1.9cgs units in the fault at 203m.</p>									

SUMMARY - ASSAY DATA

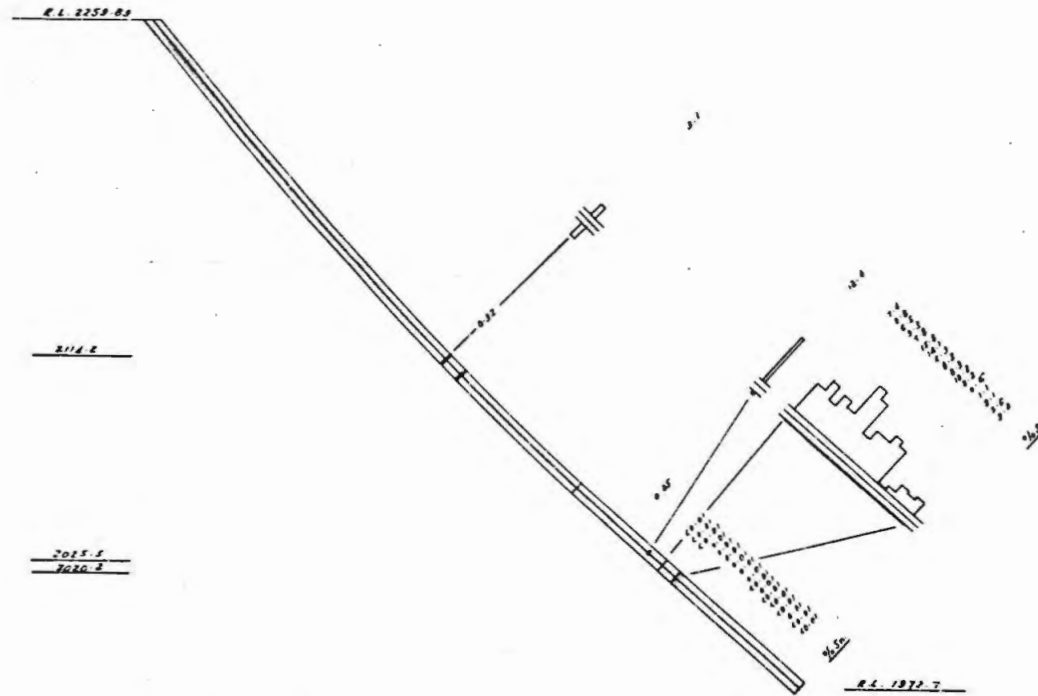
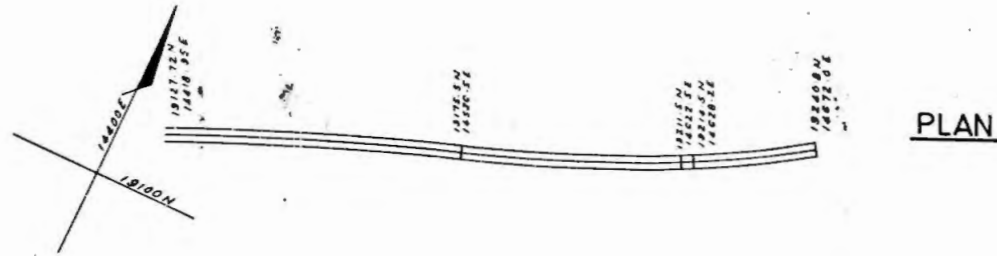
LODE NAME	FROM	TO	LENGTH (m)	AVERAGE WEIGHTED ASSAYS											B.C.A.
				Sn.	Acid Sol. Sn.	Cu.	As.	S.	Pb.	Zn.	Bi.	WO ₃	Ag g/t		
Fault ?	192.7	193.1	0.4	0.32	0.026	0.06	2.12	3.1	0.13	0.29	0.006		8		
				?	?										
	321.4	338.4	17.0	<0.01	0.013	0.05	<0.10	7.2	0.010	0.015	0.005		3		

HOLE No. : S495



RENISON LIMITED
DIAMOND DRILL HOLE PLOT

HWPS 3441



DIAMOND DRILL RECORD

HOLE NUMBER: S495

LOGGED BY: L.D. Sond

INTERVAL (m)		RECOVERY		DESCRIPTION	FORM	% Sn.										
FROM	TO	m	%			FROM	TO	TOTAL	ACID SOL.	% Cu	% As	% S	% Pb	% Zn	% Bi	gt Ag
248.3	261.7	13.4	100	BLACK SHALE, QUARTZITE												
				Well bedded, black shale and quartzite units up to 5cm thick. Very minor intraformational slumping. Fine quartz veins common, generally containing minor pyrite. BCA consistently 70°.												
				Firm, jointed parallel to bedding.												
261.7	400.1	138.4	100	BLACK SHALE/QUARTZITE TURBIDITE?, DOLOMITE, TUFF?												
				Turbidite composed of subangular clasts of medium grained quartzite in black shale matrix. Dolomite generally fine grained mid grey, with minor stylolites. Tuff? pale green, with subangular clasts oriented parallel to bedding.		312.9	313.1	0.05	0.029	0.11	0.79	12.4	0.91	18.1	0.007	26
				Turbidite minor 261.7 - 272.3m, with interbedded black shale and quartzite, extensively slumped, instead. Dolomite occurs at 271.7 - 272.3m (talcy recrystalline, minor pyrite); 323.7 - 323.9m, and 330.8 - 334.9m (interbedded with pyritic black shale).		321.4	322.4	0.01	0.021	0.05	0.10	7.4	0.009	0.082	0.003	1
				Tuff? occurs as thin (< 5cm) beds between 365.1 and 369.5m; and as thicker slumped units 379.9 - 380.2m, 380.8 - 381.3m, 382.5 - 382.8m, 384.1 - 384.3m, and 385.4 - 387.2m.			323.4	0.01	0.012	0.05	0.10	9.8	0.017	0.004	0.005	3
				Turbidite is strongly pyritic below quartz vein at 321.4; pyrite content decreases gradually downhole, becoming very minor below 338.4m. Black shale strongly tourmalinized in the region 321.4 - 338.4m.			324.4	0.01	0.012	0.05	0.10	6.5	0.013	0.005	0.006	2
				Breccia zones infilled by carbonate and sphalerite 312.9 - 313.1m, and 396.3. Minor quartz-carbonate veins elsewhere. Quartz veins and fracture filling common between 319.9 and 359.0m.			325.4	0.01	0.009	0.05	0.10	9.3	0.014	0.049	0.003	2
				Rock firm, slightly to moderately jointed generally; but very jointed parallel to bedding 324.5 - 334.0m. Broken ground 347.0 - 348.9m, 332.1 - 332.3m, and 399.5 - 399.9m.			326.4	0.01	0.021	0.05	0.10	7.8	0.009	0.006	0.004	2
				BCA's 303.3m-45°; 313m-70°; 322m-0°; 323m-50°			327.4	0.01	0.012	0.05	0.10	15.8	0.016	0.005	0.004	2
				327m-50°; 334m-60°; 345m-70°; 350m-60°; 356m-70°			328.4	0.01	0.009	0.05	0.10	14.1	0.015	0.043	0.006	3
				END OF HOLE. 397m-70°			329.4	0.01	0.018	0.05	0.10	5.9	0.007	0.004	0.008	4
							330.4	0.01	0.012	0.05	0.10	8.3	0.011	0.006	0.007	5
							331.4	0.01	0.015	0.05	0.10	8.3	0.011	0.009	0.006	8
							332.4	0.01	0.018	0.05	0.10	10.3	0.018	0.005	0.006	4
							333.4	0.01	0.003	0.05	0.10	9.2	0.012	0.004	0.004	3
							334.4	0.01	0.003	0.05	0.10	0.16	0.002	0.005	0.006	2
							335.4	0.01	0.003	0.05	0.10	1.1	0.003	0.005	0.005	2
							336.4	0.01	0.008	0.05	0.10	3.1	0.005	0.004	0.001	1
							337.4	0.01	0.003	0.05	0.10	2.6	0.004	0.013	0.002	1
							338.4	0.01	0.003	0.05	0.10	3.2	0.007	0.003	0.001	1