

Project VARATHAM T650

THE BROKEN HILL PROPRIETARY CO. LTD.

Drillhole No. WA-5

Sheet 2 of 3

094

DRILLING							DESCRIPTIVE				LOG				INTERSECTION ANGLE LEA				Box No
Core Size	From m	To m	Recover- passed m	Recover- area	% Recovery	From m	To m	LITHOLOGY	MINERALISATION	Sample No	Bedding	Veins	Other	Petrology etc.	Box No				
	117.8	118.4	0.6	0.45	75			SHALE											
	118.4	119.1	0.7	0.6	85.7														
	119.1	119.9	0.8	0.55	68.8														
	119.9	121.9	2.0	1.7	85			120.35-120.95 Shale, brown oxidised zone, thick quartz veins 2-3mm		AE 3068									
	121.9	122.9	1.0	0.7	70			120.95-123.1 Black Shale		AE 3069					7				
	122.9	124.1	1.2	0.9	75			123.1-124.1 Shale, brown weathered, oxidised zone		AE 3070									
	124.1	125.3	1.2	1.2	100			123.1-123.9 Black shale		AE 3071									
N	125.3	126.0	0.7	0.7	100					AE 3072									
Q	126.0	126.7	0.7	0.6	85.7														
	126.7	127.4	0.7	0.6	85.7														
	127.4	128.1	0.7	0.7	100														
	128.1	129.5	1.4	0.8	57.1										8				
	129.5	130.9	1.4	1.15	82.1					AE 3073									
	130.9	132.0	1.1	1.1	100														
C	132.0	133.0	1.0	1.0	100														
O	133.0	134.7	1.7	1.7	100														
R	134.7	135.8	1.1	1.0	90.9					AE 3074					9				
I	135.8	138.0	2.2	2.1	95.5														
N	138.0	139.9	1.9	1.7	89.5														
G	139.9	141.5	1.6	0.1	6.2					AE 3075									
	141.5	143.9	2.4	2.2	91.6			142.29-143.9 Black shale, higher siliceous content, quartz veining, microfaulting			42°				10				
	143.9	146.3	2.4	2.4	100			143.9-144.2 Black shale, bedding becomes shallower			20°								
	146.3	147.8	1.5	1.4	93.3			144.2-147.8 Black shale, quartz veining, very broken up		AE 3076									
	147.8	149.8	2.0	1.9	95			144.2-149.8 Black shale, veining parallel to bedding		AE 3077	35°								
	149.8	150.5	0.7	0.5	71.4			147.8-150.5 Black shale, very broken up, mixed, microfaulted			15°				11				
	150.5	152.4	1.9	1.7	89.4			150.55-150.65 Sandstone, light grey, siliceous, open fracture.											
								150.65-150.92 Black shale, lighter grey.			25°								
								150.92-151.42 Sandstone, very mixed, siliceous, black shale brecciated thereby.			35°	75°							
	152.4	155.5	3.1	3.1	100			151.42-151.62 Sandstone, very fine grained, open fractures, quartz - vermicular cemented.						WA5-1 151.58					
	155.5	157.5	2.0	2.0	100			151.62-157.5 Black shale, angled fault zone or fold zone, strongly mixed, sheared.		AE 3078	65°								
	157.5	160.5	3.0	3.0	100			157.5-158.04 Siltstone - sandstone breccia (trachypis) fine grained, carbonate and qtz veins.						WA5-2 157.98					
	160.5	163.5	3.0	3.0	100			158.04-160.1 Black shale, steeply mixed, brecciated.		AE 3079					12				
	163.5	166.5	3.0	3.0	100			160.1-165.0 Black shale, bedding again evident, microfaulting, folding		AE 3080									
								165.0-165.72 Black shale, mixed up zone, no bedding.		AE 3081	60°					13			

526094

Project VARATAH T.650

THE BROKEN HILL PROPRIETARY CO. LTD.

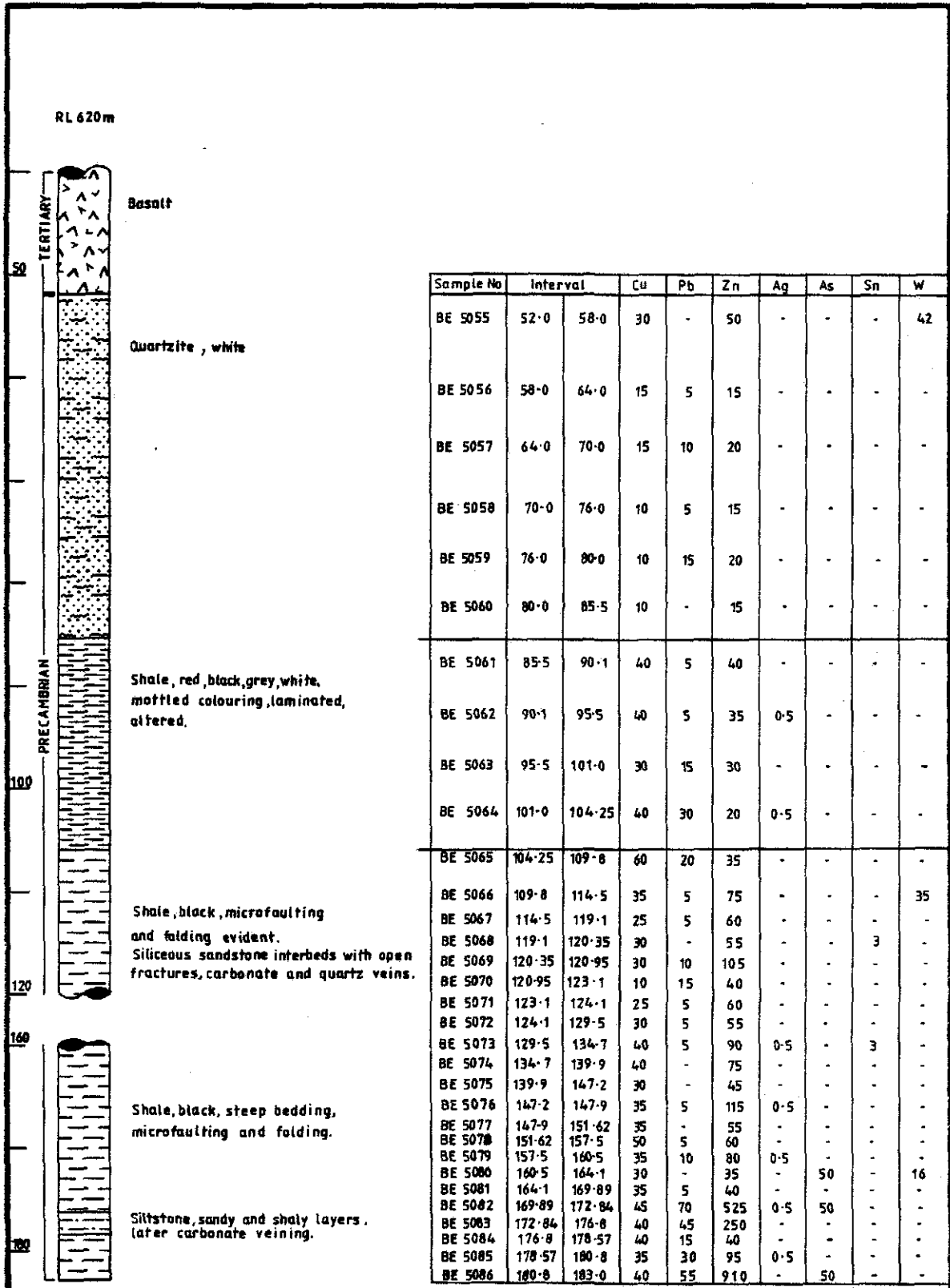
Drillhole No. UA.5.

Sheet 3 of 3

DRILLING						DESCRIPTIVE				LOG				INTERSECTION ANGLE LCA				Box No.
Core size	From m	To m	Inter-sected m	Recover-ment %	% Recovery	From m	To m	LITHOLOGY	MINERALISATION	Sample No.	Bedding	Veins	Other	Petrology etc				
	166.5	168.8	2.3	2.2	95.7			165.23-167.87 Black shale, slight folding, 1/2-1cm siliceous beds.				32°						
	168.8	171.1	2.3	2.3	100			168.87-170.07 Black shale, wavy d, overlid section		BR 2088								
N								170.07-170.24 Black shale, bedding steepens.				85°						
Q								170.24-170.74 Black shale, shallow bedding				32°						
	171.1	172.8	1.7	1.4	82.4			170.74-172.84 Black shale, bedding steepens, mottled zone, slate.				85°						
	172.8	174.7	1.9	1.9	100			172.84-174.7 Black shale, ductile cleaving, veins cut across bedding.	Py on vein, Fracture faces.	BR 2089	60°	60°			14			
	174.7	175.9	1.2	1.1	91.7			174.7-175.9 Black shale, steep bedding				78°						
	175.9	177.9	2.0	1.7	85			175.9-177.9 Siltstone, sandy and shaly, very fine grained, later calcareous veining.		BR 2090	76°			UAS.3 177.28				
	177.9	180.5	2.6	2.5	96.1			177.9-180.5 Black shale, lighter grey		BR 2091	75°				15			
C	180.5	181.2	0.7	0.55	78.5			180.5-181.2 Black shale, strongly bedded, bedding wiggly, mottled looking		BR 2092	85°							
O	181.2	183.0	1.8	1.7	94.4			181.2-183.0 Black shale, less mottled.				62°						
R																		
I								E.O.H. 183.0m										
N																		
G																		

0810

526095



Centre HOBART	THE BROKEN HILL PROPRIETARY CO. LTD. DRILL HOLE WA5 (ANOMALY H) GRAPHIC LOG AND GEOCHEMISTRY RESULTS	Project No. 1650
Date 9.5.83		Drawing No.