

COMPANY: Goldstream Mining N.L.
 PROJECT: O'Briens Mine
 HOLE NUMBER: GS 7

| | |
|-------------|-------------|
| Commenced: | 15 Oct 93 |
| Completed: | 19 Oct 93 |
| Logged By: | L.A.Newnham |
| Drilled By: | F.L.Ortner |

| Purpose of Hole |
|---|
| To test the O'Briens No. 2 Lode to the west and down plunge of previous drilling programs which intersected several substantial gold bearing qtz veins in a sandstone - shale sequence; |

| Comments on Completion |
|---|
| several zones of narrow qtz veins were intersected but gold values were very low; no major pyrite-arsenopyrite such as those drilled and mined further east were intersected; |

Collar Details

| Grid | Northing | Easting | Elevation | Dip | Bearing |
|------|-----------|---------|-----------|-----|---------|
| AMG | 5,417,502 | 569,468 | 440 | -60 | 348 |

| Length (m) |
|------------|
| 150.9 |

| Hole Size | |
|-----------|------|
| To (m) | Size |
| 15 | HQ |
| 150.9 | NQ-2 |
| | |
| | |

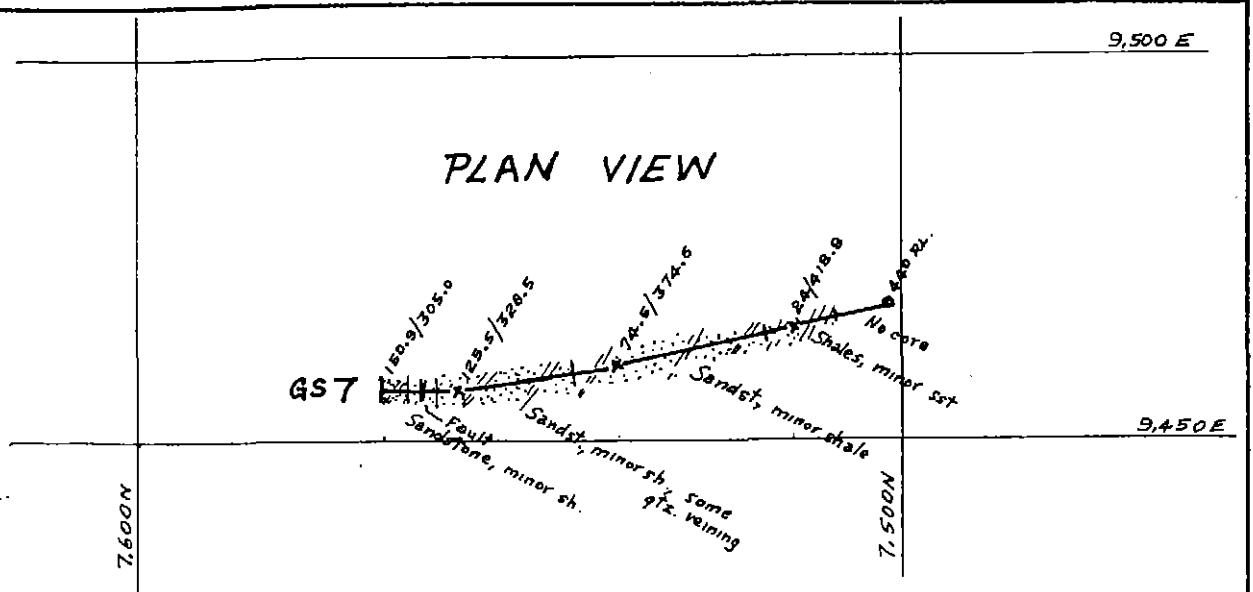
| Significant Core Loss Zones | | |
|-----------------------------|------|-------|
| From | To | %Rec. |
| 0.0 | 15 | 0 |
| 30.7 | 36.2 | 89 |
| | | |
| | | |

| Hole Condition on Completion |
|---------------------------------------|
| All rods and casing removed from hole |

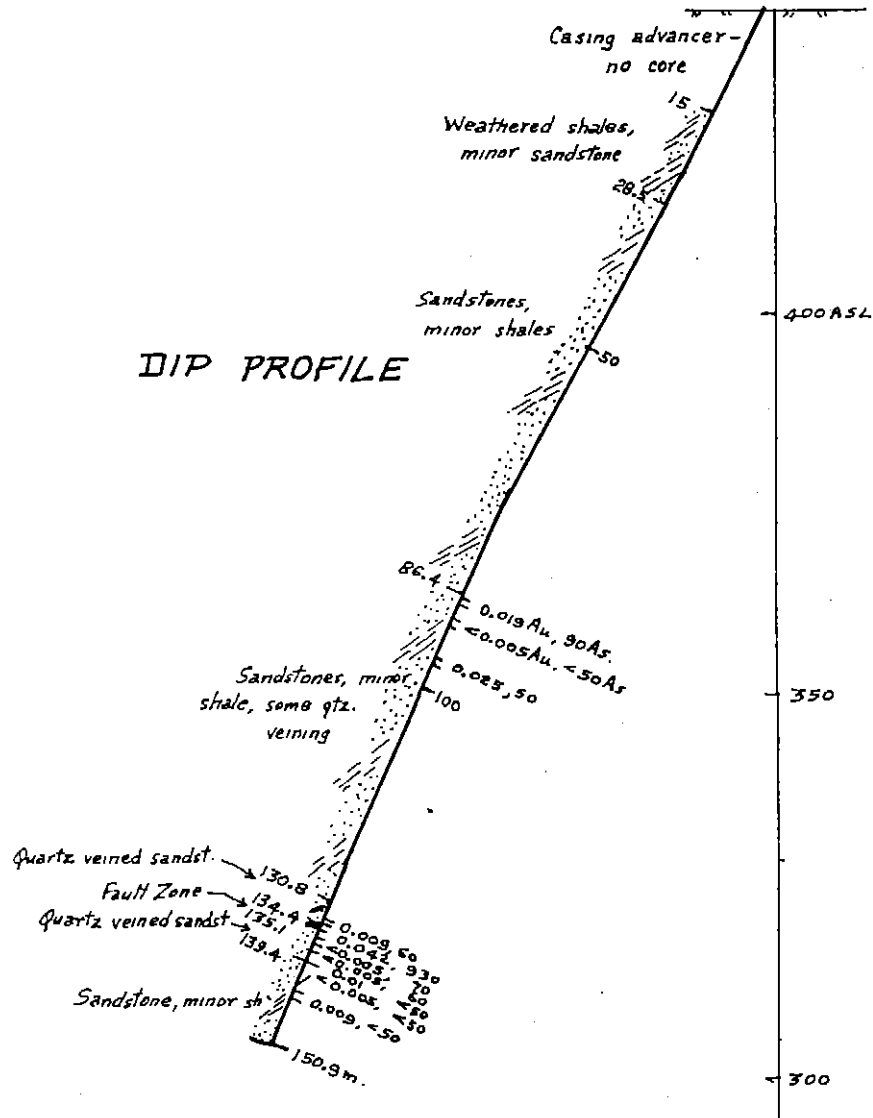
Summary of Results

| Depth | | Recovery | Description | Assays | | | | | | | | |
|-------|----|----------|------------------------------|--------|--|--|--|--|--|--|--|--|
| From | To | % | | Length | | | | | | | | |
| | | | No significant assay results | | | | | | | | | |
| | | | | | | | | | | | | |
| | | | | | | | | | | | | |
| | | | | | | | | | | | | |

PLAN VIEW



DIP PROFILE



NEWMHAM EXPLORATION AND MINING SERVICES

GOLDSTREAM MINING NL
 E.L.1/92 O'BRIENS MINE
 DRILL HOLE GS7

0 40 Scale: 1:1000

Drawn: L.A. Newham Date: Nov. 93 Figure:

| Description | | Core Recovery | | | RQD | | | Assays | | | | | | | | | |
|-------------|-------|--|-------|-------|-----|------|----|--------|-------|-------|--------|-----|--|--|--|--|--|
| From | To | | From | To | % | From | To | % | From | To | Au | As | | | | | |
| 130.8 | 134.4 | QUARTZ VEINED SANDSTONE: dark gray medium grained sandstone BCA 45; cut by numerous micro (<1 mm) - 10 mm. qtz veins typically 30 CA and striking perpendicular to strike of bedding; dissem and blebs pyrite 1-2 % associated with veins; core very competent; | 130.8 | 134.4 | 100 | | | | 133.4 | 134.4 | 0.009 | 60 | | | | | |
| 134.4 | 135.1 | FAULT ZONE: breccia of qtz veined sandstone and shale fragments set in siliceous groundmass; minor dissem pyrite and arsenopyrite (?) <1 % core broken with ilmonite on fractures; | 134.4 | 135.1 | 100 | | | | 134.4 | 135.3 | 0.042 | 930 | | | | | |
| 135.1 | 139.4 | QUARTZ VEINED SANDSTONE: dark gray medium grained sandstone with abundant qtz veins ranging from micro - 20 mm; several generations of veins often with brecciated textures; 1-2 % pyrite and possibly minor arsenopyrite in most veins; core competent; | 135.1 | 139.4 | 100 | | | | 135.3 | 136.3 | <0.005 | 70 | | | | | |
| | | | | | | | | | 136.3 | 137.3 | <0.005 | 60 | | | | | |
| | | | | | | | | | 137.3 | 138.3 | 0.01 | <50 | | | | | |
| | | | | | | | | | 138.3 | 139.3 | <0.005 | <50 | | | | | |
| 139.4 | 150.9 | SANDSTONE and MINOR SHALE: dark gray shales and sandstones cut by 1-3 mm. qtz veins whose abundance decreases down hole: sparse after 147 m; BCA 40; core orientation at 148 m. suggests bedding 70-80 degrees to SW; 143.7 m.: 15 mm. qtz vein with pyrite 30 CA; 144.5 m.: 50 mm brecciated qtz vein with pyrite and minor arsenopyrite (?); | 139.4 | 150.9 | 100 | | | | 143.4 | 144.6 | 0.009 | <50 | | | | | |
| | | END OF HOLE | | | | | | | | | | | | | | | |

927026