



PAMINCO EXPLORATION DIAMOND DRILL CORE RECORD

HOLE No. BPD 76

LOCATION	TASMANIA	OBJECTIVE	LOCATION/SURVEY DATA (AMG)		
PROJECT	BURNS PEAK	To test the western limb of a northeast plunging syncline, immediately east of the Burns Peak Summit, for base metal mineralisation in a sequence that includes shales, andesites and rhyolites, near a northeast trending shear zone. To test for the source of barium and base metal soil anomalies.	Grid	AMG	RL Collar m 550.7
PROSPECT	SUMMIT		Northing m	5 384 472.5	Bearing Collar 285°
DESIGNED BY	LINDSAY W KIRSNER		Easting m	378 757.4	Dip Collar -60°
LOGGED BY	LINDSAY W KIRSNER		DH Survey Type	EASTMAN CAMERA	
RELOGGED		RESULT	Depth m	Bearing	Dip
COMMENCED	1 OCTOBER 1992	An uphole-younging sequence of rhyolitic, shaley, ashy and andesitic lithologies with low-level sphalerite/galena/pyrite mineralisation throughout. Strong sericite/pyrite and sericite/fuchsite alteration in restricted zones associated with minor mineralisation (esp.468-472m). Sub-massive pyrite (up to 40% of rock) near faults/shear zone at 510m (Burns Peak Shear).	50	283.5	-59°
COMPLETED	3 NOVEMBER 1992		100	286	-59°
DRILLED BY	DIAMOND DRILLING T.A.S.		150	286.5	-58.25°
DRILL RIG	LONGYEAR 38		200	288	-58°
SIGNIFICANT INTERSECTIONS			250	289	-59°
From m	To m	Interval m	Comments		
			(Results not yet available)		
			300	290.5	-59°
			350	292.25	-58.26°
			400	293	-57.7°
			450	295	-58°
			500	296.75	-57.5°
			530	297.25	-57°
SIGNIFICANT CORE LOSS			POOR GROUND CONDITION ZONES		
From m	To m	% Lost	From m	To m	Condition
HOLE SIZE			HOLE CONDITIONS AFTER COMPLETION		
Size	Depth m	Collar	PVC CASES & PERMA-TAGGED		
HQ	0-34	Steel Casing	NIL		
NQ	34-532.5	PVC Casing	0-532.5m 40mm Class 9 (Vinidex)		
		Ground Water	-		
		Wedge	-		
		Drill Pad	Sump filled in & topsoil partly replaced.		

041107

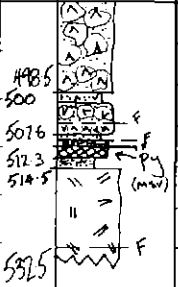
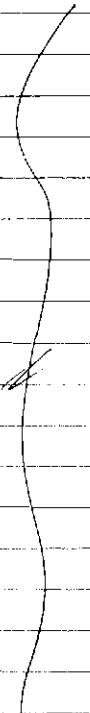
**PASMINCO EXPLORATION
SUMMARY DIAMOND DRILL CORE LOG**

HOLE No. BPD 76

PROJECT:

Graphic Scale 1:1000

Page 3 of 20

From m	Interval m	Code	Description	Depth	Graphic	From m	Interval m	Code	Description	Depth	Graphic
514.5	18.0		· RHYOLITIC TO DAKITIC LAVA / SHALLOW INTRUSIVE. - feldspathic, with minor sericite/epidote zones.	498.5 500 501.6 512.3 514.5							
532.5	-		END OF HOLE.	532.5							

041109

PASMINCO EXPLORATION
DIAMOND DRILL CORE LOG

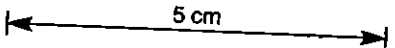
HOLE No. BPD 76

PROJECT: Burns Peak

Graphic Scale 1: 200

Page 5 of 20

CORE RECOVERY				DESCRIPTION				CODES						
From m	Interval m	%	ROD	From m	Interval m	(incl. LITHOLOGY, STRUCTURE & ALTERATION)	Depth	Graphic Lithology	Struct.	MINERALISATION	LITHO	STRUCT	ALTN	MIN
				17.8 to 19.6	81.8	• RHYOLITIC, QUARTZ-FELDSPAR PORPHYRITIC SILLS, LAVAS AND ASSOCIATED EPICLASTICS. Interval includes:-								
				17.8	1.3	- massive, grey gff. 1-4mm feldspars. ~3mm quartz. bleached and coarser interval ~18.7-19.1m.	50	+	+					
				19.1	1.4	- gff pseudo-clastic/clastic? Ragged contact at 19.1m is conformable (part of flow & flow-breccia gff pile which is partly extrusive, partly intrusive/sills)		+	+					
				20.5	1.5	- massive gff - qtz 1-5mm 30% sp 1/2-3mm 30% matrix 40%	60	+	+	faintly magnetic				
				22.0	1.2	- feldspar-rich zone ~50% crystalline feldspar in dark matrix		+	+	sil	63.6-64.2 - traces of sp. on tiny veinlets in silicified zone.			
				23.2	4.3	- massive gff, white bleached, silicified; qtz 2-5mm. pseudo-clastic textures 23.6-27.5. Some banded clasts.		+	+	sp				
				27.5	0.1	- FAULT - brittle ± clay & gravel pig zone.	70	+	+					
				27.6	72.0	- Grey, gff lava/subvolcanic shallow intrusive (?dome) Clastic & massive textures; varied feldspar (1/2-2mm) and quartz size (1-4mm) and content %. Clastic zones have flow-banded clasts with euhedral qtz crystals wrapped by the fabric. (eg: 34.0-34.2m.) 39.1-39.8m - Massive gff bleached white? brecciated - evidence of primary coarse breccias. - Domainal development of coarser feldspar crystals (~2mm) in clots & patches (possibly indicative of juvenile clasts? during emplacement, 'hot' ser/chl alt'd matrix between initially?) - More massive from 42.4m down hole. Firewhite? leucocrystals throughout.		+	+	sil/sp	70.7-71.4 - silicified zone ± tr. sphal. veinlets			
							80	+	+	sil				
								+	+					
								+	+					
							90	+	+	sil				
						57.5-57.8 - Bleached, faintly magnetic zone (? ~ 1m long magnetite crystals in gff host)		+	+					



041111

PASMINGO EXPLORATION DIAMOND DRILL CORE LOG

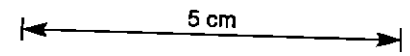
HOLE No. BPD 76

PROJECT :

Graphic Scale 1:200

Page 6 of 20

CORE RECOVERY				DESCRIPTION				CODES						
From m	Interval m	%	ROD	From m	Interval m	(incl. LITHOLOGY, STRUCTURE & ALTERATION)	Depth	Graphic Lithology	Struct.	MINERALISATION	LITHO	STRUCT	ALTM	AMN
						63.6-64.2 - white/pale grey silicified gff ± traces of sphalerite on tiny veinlets								
						70.7-71.4 - silicified zone with traces of sphalerite as blebs & veinlet fill.	97.4							
						74.9-75.0 - silicified/vein? with fragments of unsilicified gff	99.6				99.2-99.6:- - small blebs of sphalerite in sericitic matrix			
						89.9-90.2 - silicified/bleached gff & epidiastic.	100.4				99.6-100.4:- - traces of diene sp/py in sericite matrix.			
						94.5-95.1 - " " " "								
						- Character of rock begins to change from 97.4m to a finer-grained (<2mm) and less crystal-rich massive rhyolitic lavasill. Some sericite alteration of matrix and blebs of sphalerite (~0.5% locally) especially near base of unit at 99.2-99.6m	106.8				- veinlet sphalerite (tr)			
							110				- dark sp in carbonate veins			
				99.6	0.8	COARSE MASS FLOW EPICLASTIC	117.15							
						- matrix supported, non-graded, siliceous (rhyolitic) flow banded clasts (pale cream, ^{to pink} colour), in a completely chlorite/sericite altered matrix containing 0.5mm feldspar laths. Composition: feldspar crystals ~ 20% clasts ~ 40% (10-50mm) matrix ~ 40%	120				119.4-119.8m - sphalerite in veins & fractures			
						- traces of sp/py in matrix & fine leucocrone throughout.	120.7				- pyrite throughout shale			
							121.8				hercynite (& pale sphalerite)			
				100.4	6.4	RHYOLITE LAVA	130				- chocolate brown sph. blebs in matrix (121-123m) (traces)			
						- feldspathic, flow banded to massive, grey to pale grey/green, variably silicified, sericitic & pyritic.								
						- feldspar crystals ~ 1mm across form ~ 5% of rock both in the flow bands & wrapped by bands.								
						- strongly silicified and dehydrated in the intervals:-								



041112

**PASMINCO EXPLORATION
DIAMOND DRILL CORE LOG**

HOLE No. **BPD 76**

PROJECT :

Graphic Scale 1: 200

Page 7 of 20

CORE RECOVERY				DESCRIPTION										CODES			
From m	Interval m	%	RQD	From m	Interval m	(incl. LITHOLOGY, STRUCTURE & ALTERATION)	Depth	Graphic Lithology Struct.		MINERALISATION	LITHO	STRUCT	ALTR	MM			
						100.8 - 102.8 ; 105.2 - 105.5 ; 105.8 - 106.5.	140										
						- Pyrite mineralisation especially in the silicified zones, as coarse gash & joint fill and finer (1/8 mm) disseminated pyrite	150										
						- late-stage brittle carbonate veins also contain vugh-fill pyrite. About 1% total over entire interval.											
						- local dark brown sphalerite on brittle joints and veinlets (eg: 106.1 - 106.4 m).											
						- So/flowbands:- 101.2m 36° to LCA											
						102.8m 39° " "											
						105.3m 39° " "											
				106.8	10-35	RHYOLITIC HYALOCLASTITE / LAVA BRECCIA.	160										
						- Primary lava breccia / edge of lava pile hyaloclastite with well preserved jigsaw-fit textures. Sericitic inter-clast zones. Clasts ~ 2mm to 50mm, average 5-10mm.	170										
						Feldspar crystals 1-2mm form ~5% of rock clasts & in the matrix. Occasional flow banded clasts.											
						- Irregular, wispy sericite matrix zones rich in feldspar have a somewhat chaotic appearance (eg: 109.2 - 109.7m).											
						- Pyrite up to 2% locally & common throughout interval, as minor fine disseminations, coarser vein & joint fill & coarse replacement of matrix locally.	180										
						- Dark sphalerite intimately associated with carbonate veining (eg: 110.1m)											
						- Strong silicification & detexturing from 110.9 - 111.3m and 111.8 - 112.2m with up to 5% py in fractures & gashes, possibly picking out a more massive lava zone, with hints of flow banding & some 2mm black crystals (sub rounded? amygdales).											
						- 'textbook' hyaloclastic jigsaw textures on joint faces at 112.9m											

041113

PASMINGO EXPLORATION DIAMOND DRILL CORE LOG

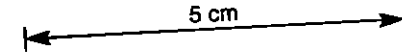
HOLE No. BPD 76

PROJECT :

Graphic Scale 1:200

Page 8 of 20

CORE RECOVERY				DESCRIPTION				CODES						
From m	Interval m	%	RQD	From m	Interval m	(incl. LITHOLOGY, STRUCTURE & ALTERATION)	Depth	Graphic Lithology	Struct.	MINERALISATION	LITHO	STRUCT	ALTN	MM
						- Possible flow bands at 20° to LCA at 114.0m. - large (>50mm) plastically deformed shale raft in the base of the unit (117.1-117.15m) "ripped up" from the underlying massive to bedded shale unit => up-hole younging	190							
				117.15	3.55	BLACK SHALE / MUDSTONE. - dark grey to black, with highly disrupted bedding. Contains sedimentary bands/laminae ~1/4 to 1/2 mm thick => soft sediment slump folds. 1/2 to 2mm feldspar crystals in very fine grained (clay/silt sized) carbonaceous (graphitic) sediment. Highly pyritic as vfg. laminae // to bedding and as coarser clots up to 20mm across. - 2-3mm carbonate blebs form ~2% of rock in more disturbed zones. Unit contains slightly more feldspar crystals and lithic fragments towards base, especially in a "mixed zone" at 120.2-120.7. - Sphalerite occurs as vein & fracture fill especially 119.4-119.8. - Conformable contact at ~25° to LCA at 120.7-120.8m with underlying epiclastic unit.	193+ 200 203.8		• Flc 5'-25' to LCA • cleaned 11 to LCA • S/LCA	- sp on carbonate veinlets - 202.0-203.8 - py/ser strongly developed.				
				120.7	1.1	COARSE EPICLASTIC WITH BLACK MUDSTONE MATRIX. - mixed/disrupted zone at the top of underlying massive epiclastic => reworked "loose" angular clasts with overlying mudstone having been disturbed & redeposited within this clast supported turbidite. - Clasts: angular, up to 200mm, mostly fsp phytic, flow banded rhyolite lava (pale cream/green) chlorite/sericite altered, etc. - Decreasing mudstone matrix down-hole, to be absent by 121.8m.	210 220 230		69° 50° 75° 20° 60° 47° 56° 35° 39° 30° 30° 39°	- pyrite 2-5% in shale (as fine disseminations, coarser blebs on bedding planes and as beds/laminations themselves)				



041114

PASMINGO EXPLORATION DIAMOND DRILL CORE LOG

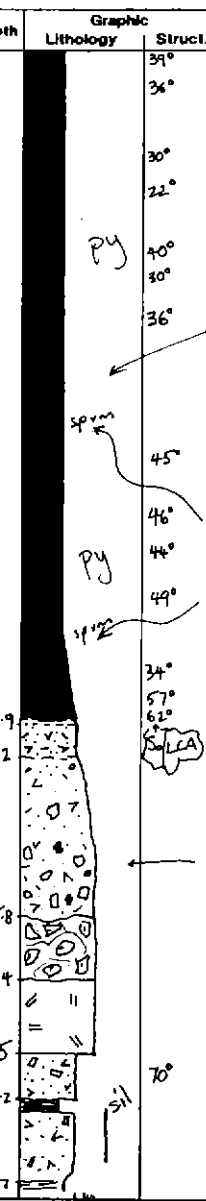
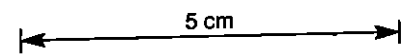
HOLE No. BPD76

PROJECT :

Graphic Scale 1:200

Page 9 of 20

CORE RECOVERY				DESCRIPTION				CODES									
From m	Interval m	%	RQD	From m	Interval m	(incl. LITHOLOGY, STRUCTURE & ALTERATION)	Depth	Graphic Lithology	Struct.	MINERALISATION	LITHO	STRUCT	ALTN	MIN			
				121.8	71.6	<p style="text-align: center;">RHYOLITIC AUTOBRECCIA (HYALOCCLASITE & LAVA BRECCIA)</p> <p>- flow banded, feldspathic, rhyolite lava clasts in a feldspathic, chloritic sericitic matrix (containing wisps & blebs of hydrothermally altered material)</p> <p>→ Primary auto breccia on the edge of a subaqueously emergent acid lava pile. Hyaloclastic jigsaw textures throughout.</p> <p>- Clasts - size: 2mm - 300mm, generally 5-40mm.</p> <p>clasts - angular, primary breccia textured, "proximal" source.</p> <p>form { - 90% flow banded, feldspathic rhyolite lava clasts 50% to 10% { 10% silica & feldspar crystals.</p> <p>- Matrix - chlorite/biotite - dark grey/green.</p> <p>- feldspar crystals mostly 1/2 - 2mm long. Minor quartz also.</p> <p>- more massive (?lava) zones exist but infrequent & narrow</p> <p>- Minor sediment - med. grained grey sandstones - interbedded / intercalated at 149.6 - 149.8m at ~25° to LCA - deformed & slumped.</p> <p>- Traces of fg. disseminated pyrite throughout interval.</p> <p>- Pale brown/pink matrix "bloom" in the matrix near the top of interval (121-125m) - hematite/albite alteration (?sph)</p> <p>- fine carbonate veinlets occur throughout interval (planar, brittle, varnished)</p> <p>- traces of chocolate brown sphalerite as blebs in matrix above ~133m. Variable but weak ser/sil alteration.</p>	240										
				193.4	10.4	<p style="text-align: center;">FELDSPAR PHYRIC RHYOLITE LAVA.</p> <p>- flow banded, dark grey, feldspathic. Pyritic & increasingly bleached (or) towards base of interval (esp: 202.0 - 203.8). Flow bands at 5° - 25° to LCA, somewhat distorted & deformed. Feldspars 1/4 - 2mm, pink to white, form ~2%. Carbonate veins & veinlets throughout.</p> <p>- Dramatic increase in pyrite content in lowest 30cm.</p>	270										



041115

PASMINGO EXPLORATION DIAMOND DRILL CORE LOG

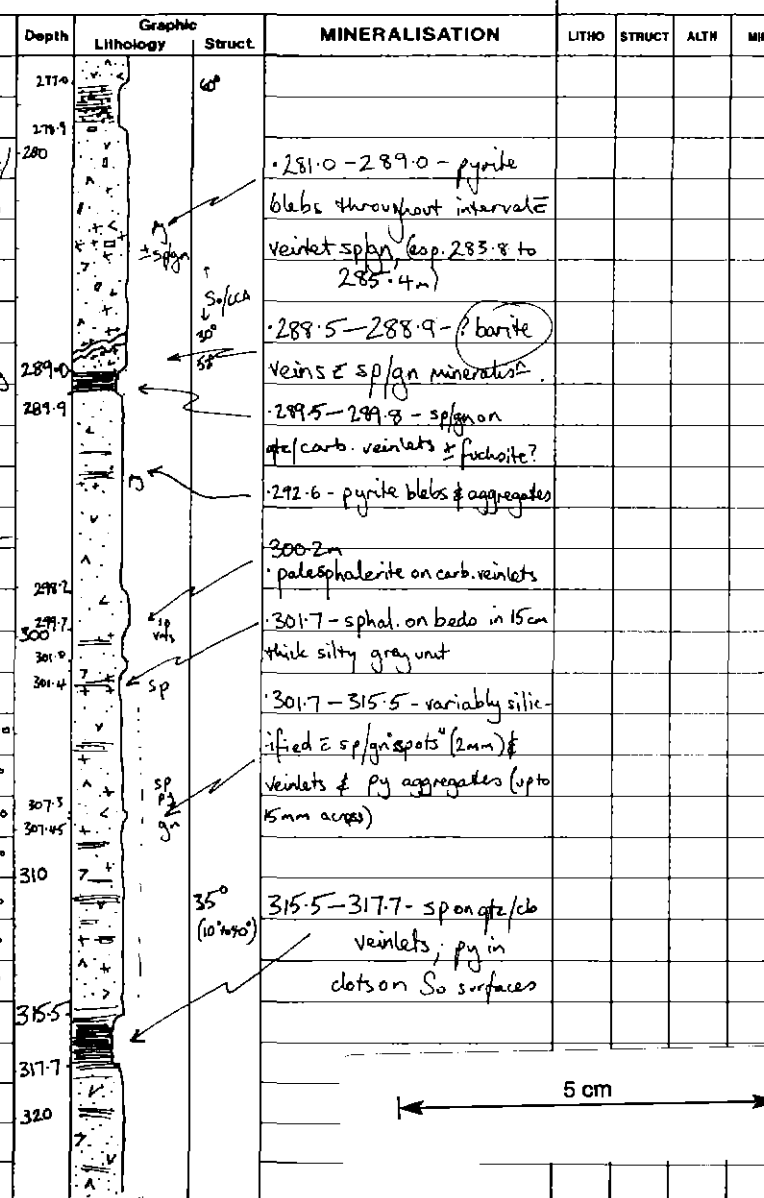
HOLE No. BPD 76

PROJECT :

Graphic Scale 1: 200

Page 10 of 20

CORE RECOVERY				DESCRIPTION										CODES					
From m	Interval m	%	RQD	From m	Interval m	(incl. LITHOLOGY, STRUCTURE & ALTERATION)										LITHO	STRUCT	ALTH	MIN
						Some cleavage developed // to LCA. - Coarser veins contain coarse sphalerite eg: 203.7m - 203.75 - 203.85 - interfingered/intermixed zone of bleached sericitic/pyritic lam & black mudstone wisps and injections, stretched // to a strong cleavage at 40° to LCA (basal contact of unit).													
				203.8	54.1	BLACK SHALE / MUDSTONE. - carbonaceous, down-hole coarsening to become an ashy grey sandstone. Strongly cleaved. Main cleavage is sub-parallel to LCA. Well bedded/thinly laminated, with much pyrite on bedding planes as both very fine laminae and as coarser aggregates and blebs, irregularly distributed along beds. - carbonate veinlets throughout, often // to beds. - ore breaks // to beds or // to cleavage predominantly.													
						MEASUREMENTS: depth(m): feature: angle to LCA:													
						So ANGLE TO LCA:													
						219.0	50°	247.2	45°										
						204.65	So	37°	221.5	35°	249.2	46°							
						205.6	So	40°	223.3	39°	250.9	44°							
						205.6	S ₁	17°	226.1	30°	253.0	49°							
						205.6	intersection of S ₀ & S ₁ ∈ L ₁		32°	227.8	30°	256.0	34°						
						209.5	So	69°	230.1	39°	258.8	57°							
						209.5	S ₁	30°	231.9	36°	257.4	62°							
						210.2	So	50°	234.7	30°									
						211.0	So	75°	236.0	22°									
						213.3	So	20°	238.3	40°									
						215.0	So	60°	239.7	30°									
						217.1	S ₀	47°	241.6	36°									



041116

PASMINGO EXPLORATION DIAMOND DRILL CORE LOG

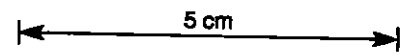
HOLE No. BPD 76

PROJECT :

Graphic Scale 1: 200

Page 11 of 20

CORE RECOVERY				DESCRIPTION						CODES				
From m	Interval m	%	ROD	From m	Interval m	(incl. LITHOLOGY, STRUCTURE & ALTERATION)	Depth	Graphic Lithology	Struct.	MINERALISATION	LITHO	STRUCT	ALTN	MIN
						- a second cleavage is present but difficult to determine overprinting relationship between it and the major cleavage. - soft sediment deformation indicates a consistent up-hole younging, particularly in the sandier units from 252.0 to 257.9m. Interval is highly pyritic but may contain fine sphalerite also. * CORE ORIENTATION SPEAR RUN AT: - 247.1m & 259.3m MARKS ON CORE DID NOT MATCH (out by ~50°) => DATA REJECTED.	322			<p>Sp (near) CORE ORIENTATION: - 319.5 & 322.5 => GOOD DATA</p> <p>depth: Sp: 320.5 ^{ANG} 074/52° NW 322.6 ^{ANG} 014/55° W</p> <p>• sp/py aggregates, gn/sp spots & veinlets throughout interval, especially at 319.0 - 328.0 334.3 - 342.0 349.5 - 352.0 354.5 - 359.0</p> <p>343.0 FAULT 15cm wide chloritic</p>				
				257.9	13.6	VOLCANICLASTIC SANDSTONE TO LAVA BRECCIAS. - down-hole coarsening sequence of feldspar & quartz crystal-rich volcaniclastic sandstone, coarser epiclastic conglomerate, "primary" volcaniclastic lava breccia and massive rhyolite lava. INTERVALS: • Volcaniclastic sandstone: ~ 257.9 - 259.2 - chl. matrix • Volcaniclastic mass flow conglom. ~ 259.2 - 265.8 • Lava breccia (rhyolitic): 265.8 - 268.4 • Rhyolite lava: 268.4 - 271.5 - bleached. - Pyrite ~ 1% disseminated throughout interval.	340							
				271.5	1.7	ASHY SANDSTONE - interbedded coarse feldspar crystal volcaniclastic sandstone and fine ashy sandstone with quartz crystals (2mm) / pyroclasts	350							
				273.2	0.5	GREY/BLACK SILT/SANDSTONE. (So @ 273.2) - grey/black, laminated, ashy mudstone to sandstone, with contorted beds at base, incorporating clasts of underlying unit.	352.8							
							354.4							
							356.0							
							358.5							
							360							



041117

PASMINGO EXPLORATION DIAMOND DRILL CORE LOG

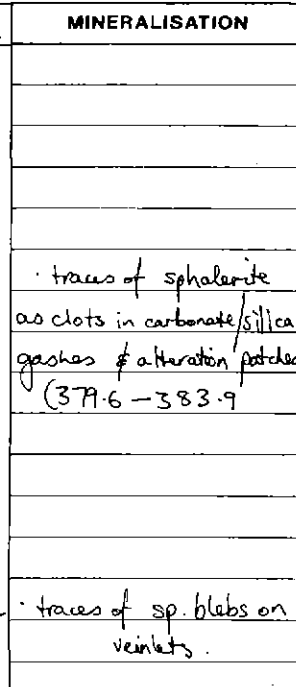
HOLE No. BPD 76

PROJECT:

Graphic Scale 1:200

Page 12 of 20

CORE RECOVERY				DESCRIPTION							CODES			
From m	Interval m	%	RQD	From m	Interval m	(incl. LITHOLOGY, STRUCTURE & ALTERATION)	Depth	Graphic Lithology	Struct.	MINERALISATION	LITHO	STRUCT	ALTN	MN
				273.7	15.3	FINE ASHY SANDSTONES TO GRAVELLY CRYSTAL SANDSTONES	369.5							
						-pale cream/grey/green fine ashy sandstones interbedded with gravelly feldspar-quartz crystal-rich volcaniclastic sandstones.	370		↑					
						-variably silicified (eg: 274.5-276.0 -strong) and sericitic in patches. Finer grained zones are well bedded.	371.3		↑					
						eg: 277.0-278.9 (-So at 60° to LCA at 278.3m)	375.9							
						* CORE ORIENTATION AT 283.3 & 286.4 - don't match => REJECT DATA	374.2							
						- Coarse, massive ? barite veins at base of unit from 288.5m to 288.9m associated with sp/gn mineralisation. Rock is yellow/green around the veins (=> ? epidote/fuchsite?) and turns bright apple green with conc. HCl. The veins don't fizz, but have a brown weathering coating that comes off with conc. HCl.	374.2							
						* NEED TO TEST SG! & GEOCHEMISTRY...	374.6							
						- vein material is a white to very pale cream/buff colour, with a strong mineral cleavage.	380							
							383.9							
							388.1							
							390							
							391.0							
							392.4							
							393.5							
				289.0	0.9	GREY/BLACK SILTSTONE	394							
						-bedded/laminated shale to siltstone. Upper contact is conformable at 30° to LCA; So at 289.2 is 52° to LCA	400							
						- much veining at 289.5-289.8 = gn/sp mineralisation								
						Veins aren't carbonate (no fizzing) but not qtz => feldspar?/barite?								
						=> Apple green colour = HCl => chrome rich? fuchsite?								
						Renovated sandstone/breccia at base = laminated clasts at varying attitudes. Conformable lower contact.	410							
				289.9	15.9	VOLCANICLASTIC SANDSTONES, GRAVELLY SANDSTONES	410							
				to 444.8		AND COARSER MASS FLOW UNITS WITH MINOR GREY/BLACK	414.3							



041118

CONTINUED ON PAGE 11

**PASMINCO EXPLORATION
DIAMOND DRILL CORE LOG**

HOLE No. BPD 76

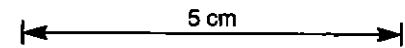
PROJECT :

Graphic Scale 1:200

Page 13 of 20

CORE RECOVERY				DESCRIPTION					CODES					
From m	Interval m	%	ROD	From m	Interval m	(incl. LITHOLOGY, STRUCTURE & ALTERATION)	Depth	Graphic Lithology	Struct.	MINERALISATION	LITHO	STRUCT	ALTN	MIN
				289.9 to 449.8	cont'd	<p><u>MUDSTONES AND ASHY UNITS.</u></p> <p>-interval varies from feldspar/quartz crystal volcanoclastic sandstones with a chloritic matrix to cream coloured ash fall siltstones with fine qtz/fsp crystals and grey laminated carbonaceous mudstones.</p> <p>-often grades from one unit to the others.</p> <p>-variable low-level sericitisation & silicification throughout.</p> <p>-some pyritic zones (~1% p) which contain blebs of sphalerite in the matrix, especially associated with "shaley" zones and carbonate veinlets. <u>Detailed intervals :-</u></p>								
				289.9	25.6	<p><u>BEDDED ASHY SANDSTONE</u></p> <p>-fine sand, grey/cream colour, with a coarse sand unit interbedded at: 298.2-299.7; 301.0-301.4; 307.3-307.45</p> <p>-gradational zone/interbedded zone between pale siliceous sandstone above and grey carbonaceous mudstone below:-</p>								
				315.5	2.2	<p><u>GREY CARBONACEOUS MUDSTONE</u></p> <p>-well bedded / laminated, with much soft sediment deformation and quartz/carbonate veining.</p> <p>-Chocolate brown sphalerite along veinlets. Pyrite clots // to bedding.</p> <p>-So between 40° ± 10° to LCA. Average ~35°.</p> <p>-Gradational/interbedded basal contact with underlying pale volcanoclastic sandstone.</p>								
					*	<p><u>CORE ORIENTATION AT 319.5 & 322.5 - MATCH UP -> GOOD DATA</u></p> <p>(see mineral column on p. 10)</p>								
				317.7	51.8	<p><u>VOLCANICLASTIC SANDSTONE.</u></p> <p>-interbedded grey sandstones and pale yellow/green</p>								

CONTINUED P. 15



041119

**PASMINCO EXPLORATION
DIAMOND DRILL CORE LOG**

HOLE No. BPD 76

PROJECT :

Graphic Scale 1:

Page 14 of 20

CORE RECOVERY				DESCRIPTION				CODES						
From m	Interval m	%	ROD	From m	Interval m	(incl. LITHOLOGY, STRUCTURE & ALTERATION)	Depth	Graphic Lithology	Struct.	MINERALISATION	LITHO	STRUCT	ALTN	MIN
						sandstones with minor feldspar crystal-rich coarser units at: 352.8-354.4; 356.0-356.5. (FAULT at 343.0. 15cm wide, chaotic.		2.15 CONTINUED	5 cm					
					*	CORE ORIENTATION @ 349.5 & 352.5 - GOOD MATCH → 400D (see p. 11)								
				369.5	1.8	CRYSTAL "MASS FLOW" SANDSTONES & MINOR CONGLOMERATES.								
						-uphole-fining feldspar crystal mass flow from ~3-4mm at base to 1-2mm at top. Cream/green colour, ± fsp x'ls & lithics.								
				371.3	2.1	-mass flow fining up-hole from 10mm-1mm feldspar crystals								
				373.4	0.8	-massive pale cream/green volcanoclastic sandstone. -Uphole younging, graded bed boundaries at 371.3 & 373.4m								
				374.2	5.4	-Pale greenish/yellow, ser/ep/chl altered volcanoclastic sandstone Some bedding preserved eg: 375.6 & 376.6m. Minor internal hydrothermal brecciation. Grain size: med to coarse sst (1/2-1mm) ± fsp & qtz x'ls.								
				379.6	4.3	-Gravelly sand-sized, crystal-lithic "tuff". Ser/ep/sil (low level). So at 30° to LCA.								
				383.9	4.2	-Volcanoclastic sandstone ± contorted beds; med to fine sand size, pale cream/grey colour; Minor silicification & coarser fsp. zones. ep/ser alt ⁿ at the base of unit.								
				388.1	2.9	-Crystal-Lithic CONGLOMERATE. Faint upward-fining. Mass debris slide deposit. Clasts: 1mm to 20mm. Average 5-8mm at base and 3-5mm at top. Chl/ser matrix. Clasts are: fsp. x'ls; msv. silica & pumiceous. Epidote alt ⁿ in top 50cm								
				391.0	1.4	-massive to bedded, med grained (< 1/2 mm) pale volcanoc. sst. (trisp)								
				392.4	1.1	-feldspar crystal-rich volcanoc. sandstone. ~2mm x'ls.								
				393.5	5.6	-Volcanoc. sst. with contorted (softsed def ⁿ) beds & blebs of sponveridite								
				399.1	15.2	-Coarse feldspar crystal-rich volcanoclastic mass flow units. Some uphole fining, mostly massive. Includes lithic clasts. Grain size: generally 2 to 20mm, rare clasts up to 150mm. Chl/ser matrix. Lithics are msv. silica or bedded sediments.								

041120

**PASMINCO EXPLORATION
DIAMOND DRILL CORE LOG**

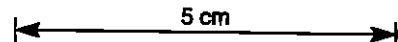
HOLE No. BPD 76

PROJECT :

Graphic Scale 1: 200

Page 15 of 20

CORE RECOVERY				DESCRIPTION										CODES			
From m	Interval m	%	ROD	From m	Interval m	(incl. LITHOLOGY, STRUCTURE & ALTERATION)	Depth	Graphic Lithology	Struct.	MINERALISATION	LITHO	STRUCT	ALTN	MIN			
						Uphole fining units at top of interval eg: 399.1 - 400.8m Pyrite on joints & veins. Minor epidote alteration.	414.3										
				414.3	7.7	- Volcaniclastic sandstone - fine - med sand size; grey/yellow colour; bedded at 25° to LCA (average) Minor coarser zones & contorted beds.	420			S/LCA 25°							
				422.0	1.7	- Coarser epiclastic breccia, with py/ser alteration.	423.7										
				423.7	8.4	Angular lithic clasts upto 40mm in a grey sericitic matrix - Pale cream/buff/grey med. grained Volc. sandstone. Some broken core (? Fault) and tr. galena/sphalerite on veins	430										
				432.1	12.7	- Coarse to gravelly volcaniclastic sandstone with crystals of feldspar & lithic (pale siliceous) clasts. Grey to cream colour. Clasts generally 1-2mm, up to 20mm. Chl/ep. alteration on joints at top of unit. Dissem. py & traces of sphalerite in better sorted units. Qtz/carb. veinlets contain sphalerite.	432.1										
						Uphole fining units at 433.7 - 435.4 441.2 - 444.8	440										
				444.8	3.9	<u>RHYOLITE LAVA?</u> - pink/grey, feldspathic, massive to slightly banded. Chloritic "patches" / alteration zones. Pyritic (~1%) disseminations & sericitic patches.	444.8										
				448.7	49.6	<u>ANDESITIC VOLCANICLASTICS:-</u> - includes epiclastic mass flows, hyaloclastite & pillowed lavas with minor sandstone to gravelly peperites intercalated	448.7										
				448.7	16.8	- Coarse epiclastic andesitic mass flow deposit. Large basaltic andesite, feldspathic/amygdaloidal clasts in a variably sericitic to fuchsite matrix.	460										



qtz/carb veinlets contain sphalerite

traces of py

453.8 - galena clots

451.5 - 460.3 - sphal. (py)

strong ser/fuchsite alt
457.5 - 457.7

041121

PASMINGO EXPLORATION DIAMOND DRILL CORE LOG

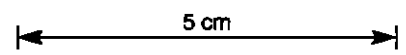
HOLE No. BPD 76

PROJECT :

Graphic Scale 1:

Page 16 of 20

CORE RECOVERY				DESCRIPTION				CODES						
From m	Interval m	%	RQD	From m	Interval m	(incl. LITHOLOGY, STRUCTURE & ALTERATION)	Depth	Graphic Lithology	Struct.	MINERALISATION	LITHO	STRUCT	ALTN	MIN
						Generally pink/grey colour in less altered patches; cream to green colour when altered. Pale brown sphalerite in altered patches.				tr. sphalerite & pyrite				
						ALTERATION:- sericite/pyrite strong to variable with galena dots (esp: 453.8) and fine grained sphalerite at 451.5 to 460.3, plus 1% disseminated pyrite - mainly in matrix in coarser andesitic epiclastic zones.	465.5			clots of py.				
						- especially strong alteration (fuchsite/sericite) at 457.5 to 457.7. (similar style to Hellyer Hanging Wall alteration?)	468.0			galena/sphalerite matrix				
				465.5	2.5	- Sandstone - silicified, pink/grey, with clots of pyrite, in a fine-grained (? ashy) sandstone, with a brecciated base. (Alteration (ser) increases gradually from moderate to strong from 460.3 to 465.5)	470			veins of galena/sphalerite				
				468.0	0.5	Gravelly Sandstone - siliceous, pink sandstone with a sulphide matrix - mainly a silver/grey mineral (? galena). Coarse/moderate sphalerite/galena veins cross-cut interval. Disseminated pyrite & chalcopyrite (fine) also.	471.6			fine gr. dissem py/cpy (~ 5% total sulphides)				
				468.5	39.8	Andesitic epiclastics & hyaloclastite - coarse andesitic epiclastic mass flows and hyaloclastic breccias. Strongly sericite/fuchsite altered (yellow/green) from 468.5 to 471.6m. (Striking similarities to Hellyer Hanging Wall-style alteration)	480			Strong sericite/fuchsite alteration 468.5 to 471.6				
						- sericite alteration moderate to weak (variably) from 471.6 to 508.3m. Dark grey/green colour & much carbonate veining also. Traces of sp/gn mineralisation	490			moderate/weak sericite 471.6 - 508.5				
						- Generally coarse, amygdaloidal andesite clasts but some fine grained, sandy bedded zones (498.5 to 500.5)	498.5			traces of sp/gn.				
							500							
							500.5							
							505.9							



041122

PASMINGO EXPLORATION DIAMOND DRILL CORE LOG

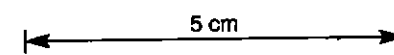
HOLE No. BPD 76

PROJECT :

Graphic Scale 1:

Page 17 of 20

CORE RECOVERY				DESCRIPTION										CODES			
From m	Interval m	%	RQD	From m	Interval m	(incl. LITHOLOGY, STRUCTURE & ALTERATION)	Depth	Graphic Lithology	Struct.	MINERALISATION	LITHO	STRUCT	ALTN	MIN			
						Clasts are more massive, dark grey, feldspathic and non-amphiboloidal from 500.5 - 508.3m	507.5			509.7 - 512.3m: - upto 40% fine-grained pyrite (replacing silica/sericite)							
						Brittle FAULT @ 45° to LCA at 505.9m (puggy)	510		ser/ps	- s plgn in carbonate blebs & veinlets.							
						" " " ≈ 50° " " 508.3m.	512.0		ser-py (msr py & ser)	- fg. sp lgn w/ in pyrite?							
						Gravelly sand unit (base of lava pile?) at 507.6 - 508.3	514.5		sil/ser								
				508.3	1.4	FAULT ZONE											
						- broken core below a narrow pug zone ± strong sericite/pyrite alteration and cleavage developed. Rock is pink to yellow/green, siliceous to andesitic breccia.	520			sphalerite in veinlets & cleavage at 515.4m.							
				509.7	-	FAULT PUG @ 45° to LCA (pyrite below it)											
				509.7	2.3	"SERICITE/PYRITE ROCK" (TYPE UNKNOWN)											
						- fine-grained pyrite, replacing the silicates, forms ≈ 40% of rock volume. The rest is cleaved sericite, with black (?chloride) zones developed in minor amounts.	530		ser/ep								
						- Zone is possibly high base metals? Some fine sp lgn in small carbonate blebs as well as w/ in the pyrite.	532.5										
				512.0	0.3	- brecciated/mixed between sulphide zone and pale massive sericite/silica rock below.											
				512.3	2.2	SERICITIC? ASHY ZONE.											
						- silicified, very fine grained pale sericitic rock, with zones of "crackle" breccia and veins of sphalerite/carbonate (513.4m)											
				514.5	18.0	- RHYOLITIC TO DACITIC LAVA / SHALLOW INTRUSIVE.											
						- grey to pink, feldspathic (2-3mm crystals). Massive. Minor sericitic/epidote zones at 426.9-429.0 & 431.0-432.5m											
				532.5	EOH	- Brittle fault at 532.3m											



532.5m
END OF HOLE

041123

HOLE No. BPD 76

PROJECT: Burns Peak

PASMINCO EXPLORATION
DIAMOND DRILL HOLE SUPPLEMENTARY DATA

Page 18 of 20

CORE PROCESSING RESULTS				DRILL HOLE				BPD76				PROCESSED BY				SW			
CORE RECOVERY				MAG. SUS				S.G & CHECK S.G				SAMPLING INTERVALS				ENTERED BY			
FROM	TO	REC	%REC	DEPTH	M.SUS	DEPTH	WEIGHT	VOL	S.G	FROM	TO	TICKET #	COMMENTS	FROM	TO	TICKET #	COMMENTS		
0	4	1.8	45.00	4	0				0.00								NQ		
4	8.9	5.7	116.33	8.9	0				0.00								NQ		
8.9	13.2	3.1	72.09	13.2	0.01				0.00								NQ		
13.2	16.5	3.5	106.06	16.5	0.02				0.00								NQ		
16.5	19.5	3.2	106.67	19.5	0				0.00								NQ		
19.5	22.5	3.2	106.67	22.5	0.04				0.00								NQ		
22.5	25.5	3.4	113.33	25.5	0.03				0.00								NQ		
25.5	27.6	1.2	57.14	27.6	0.01				0.00								NQ		
27.6	29.7	2.3	109.52	29.7	0				0.00								NQ		
29.7	34.2	4.40	97.78	34.2	0.02				0.00								NQ		
34.2	35.8	1.6	100.00	35.8	0				0.00								NQ		
35.8	37.8	1.8	90.00	37.8	0				0.00								NQ		
37.8	39.9	2.2	104.76	39.9	0.02				0.00								NQ		
39.9	42.8	3.2	110.34	42.8	0				0.00								NQ		
42.8	45.1	2.5	108.70	45.1	0.01				0.00								NQ		
45.1	46.7	1.7	106.25	46.7	0.01				0.00								NQ		
46.7	48.7	2.2	110.00	48.7	0.03				0.00								NQ		
48.7	52.2	3.9	111.43	52.2	0				0.00								NQ		
52.2	54.8	3	115.38	54.8	0.01	50	530	211	2.51								NQ		
54.8	57.6	3.1	110.71	57.6	0.04	50	527	209	2.52								NQ		
57.6	60.3	3.1	114.81	60.3	0				0.00								NQ		
60.3	64.5	3.6	85.71	64.5	0				0.00								NQ		
64.5	67.5	3.2	106.67	67.5	0.02				0.00								NQ		
67.5	70.3	3.1	110.71	70.3	0.01				0.00								NQ		
70.3	75	4.9	104.26	75	0.03				0.00								NQ		
75	77.3	2.3	100.00	77.3	0.06				0.00								NQ		
77.3	79.5	2.2	100.00	79.5	0.04				0.00								NQ		
79.5	82.2	2.9	107.43	82.2	0.09				0.00								NQ		
82.2	85.3	3.3	106.45	85.3	0				0.00								NQ		
85.3	87.1	2	111.11	87.1	0.01				0.00								NQ		
87.1	90.1	3.7	123.33	90.1	0.01				0.00								NQ		
90.1	92.2	2.6	113.33	92.2	0.11				0.00								NQ		
92.2	95.4	3.8	118.75	95.4	0.06				0.00								NQ		
95.4	97.2	1.8	100.00	97.2	0.03				0.00								NQ		
97.2	102.1	5.1	104.08	102.1	0.02				0.00								NQ		
102.1	104	2	103.26	104	0.02	100	451	175	2.58								NQ		
104	106.2	2.7	122.73	106.2	0.01	100	195	84	2.32								NQ half		
106.2	109.5	3.4	101.03	109.5	0.01				0.00								NQ		
109.5	112.5	3	100.00	112.5	0.02				0.00								NQ		
112.5	115.5	3	100.00	115.5	0.01				0.00								NQ		
115.5	118.5	3	100.00	118.5	0				0.00								NQ		
118.5	120.5	2.3	115.00	120.5	0.01				0.00								NQ		
120.5	123.3	2.8	100.00	123.3	0.01				0.00								NQ		
123.3	125.6	2.5	108.70	125.6	0.01				0.00								NQ		

CORE PROCESSING RESULTS				DRILL HOLE				BPD76				PROCESSED BY				SW			
CORE RECOVERY				MAG. SUS				S.G & CHECK S.G				SAMPLING INTERVALS				ENTERED BY			
FROM	TO	REC	%REC	DEPTH	M.SUS	DEPTH	WEIGHT	VOL	S.G	FROM	TO	TICKET #	COMMENTS	FROM	TO	TICKET #	COMMENTS		
125.6	127.3	1.5	88.24	127.3	0.01				0.00								NQ		
127.3	129.2	2.1	110.53	129.2	0.02				0.00								NQ		
129.2	132.3	3.1	100.00	132.3	0.01				0.00								NQ		
132.3	135.4	3.1	100.00	135.4	0.06				0.00								NQ		
135.4	138.5	3.3	106.45	138.5	0.01				0.00								NQ		
138.5	141.3	2.9	103.57	141.3	0.01				0.00								NQ		
141.3	144.3	3.1	103.33	144.3	0				0.00								NQ		
144.3	147.4	3.1	100.00	147.4	0.01				0.00								NQ		
147.4	148.5	1.1	100.00	148.5	0.01				0.00								NQ		
148.5	151.5	3.1	103.33	151.5	0.01	150	458	264	1.73								NQ		
151.4	154.4	2.9	96.67	154.4	0.01	150	458	181	2.53								NQ		
154.4	157.4	3.2	106.67	157.4	0.01				0.00								NQ		
157.4	159.6	2.2	100.00	159.6	0				0.00								NQ		
159.6	161.8	2.4	109.09	161.8	0.02				0.00								NQ		
161.8	163.5	1.6	94.12	163.5	0.02				0.00								NQ		
163.5	166.3	2.8	100.00	166.3	0.03				0.00								NQ		
166.3	167.1	0.9	112.50	167.1	0.01				0.00								NQ		
167.1	170.2	3.1	100.00	170.2	0.02				0.00								NQ		
170.2	174.2	4	100.00	174.2	0.04				0.00								NQ		
174.2	176.9	2.9	107.41	176.9	0				0.00								NQ		
176.9	178.5	1.5	93.75	178.5	0.01				0.00								NQ		
178.5	182.7	4.3	102.38	182.7	0.04				0.00								NQ		
182.7	185.7	3.3	110.00	185.7	0.02				0.00								NQ		
185.7	188.8	3.1	100.00	188.8	0.01				0.00								NQ		
188.8	191.9	3.1	100.00	191.9	0.02				0.00								NQ		
191.9	195	3.1	100.00	195	0.01				0.00								NQ		
195	198.1	3	96.77	198.1	0.01				0.00								NQ		
198.1	199.5	1.6	114.29	199.5	0.01				0.00								NQ		
199.5	202.4	2.3	79.31	202.4	0.01	200	434	166	2.61								NQ		
202.4	205.1	2.8	103.70	205.1	0.01	200	437	174	2.51								NQ		
205.1	207.4	2.3	100.00	207.4	0				0.00								NQ		
207.4	208.9	1.7	113.33	208.9	0.01				0.00								NQ		
208.9	211.5	3	115.38	211.5	0				0.00								NQ		
211.5	214	2.5	100.00	214					0.00								NQ		
214	215.7	1.9	111.76	215.7	0				0.00								NQ		
215.7	217.5	2	111.11	217.5	0.01				0.00								NQ		
217.5	220.5	2.9	96.67	220.5	0.02				0.00								NQ		
220.5	222.5	3	100.00	222.5	0.01				0.00								NQ		
222.5	226.5	3	100.00	226.5	0.01				0.00								NQ		
226.5	229.5	3.1	103.33	229.5	0.01				0.00								NQ		
229.5	232.5	3	100.00	232.5	0				0.00								NQ		
232.5	235.5	3	100.00	235.5	0				0.00								NQ		
235.5	237.9	2.4	100.00	237.9	0				0.00								NQ		
237.9	240.9	3	100.00	240.9	0				0.00								NQ		
240.9	244	3	96.77	244	0				0.00								NQ		
244	247.1	3.1	100.00	247.1	0				0.00								NQ		
247.1	250.1	3	100.00	250.1	0.01	250	337	160	2.11								NQ		
250.1	253.1	3	100.00	253.1	0	250	234	96	2.44								NQ half		
253.1	256.2	3	96.77	256.2	0.01				0.00								NQ		
256.2	259.3	3	96.77	259.3	0.01				0.00								NQ		

041124

PASMINCO EXPLORATION
DIAMOND DRILL HOLE SUPPLEMENTARY DATA

PROJECT: Burns Peak

CORE PROCESSING RESULTS DRILL HOLE BPD76 PROCESSED BY SW
MAG.SUS ENTERED BY SW
CORE RECOVERY (UNITS: ST&G.01) S.G & CHECK S.G SAMPLING INTERVALS

CORE PROCESSING RESULTS DRILL HOLE BPD76 PROCESSED BY SW
MAG.SUS ENTERED BY SW
CORE RECOVERY (UNITS: ST&G.01) S.G & CHECK S.G SAMPLING INTERVALS

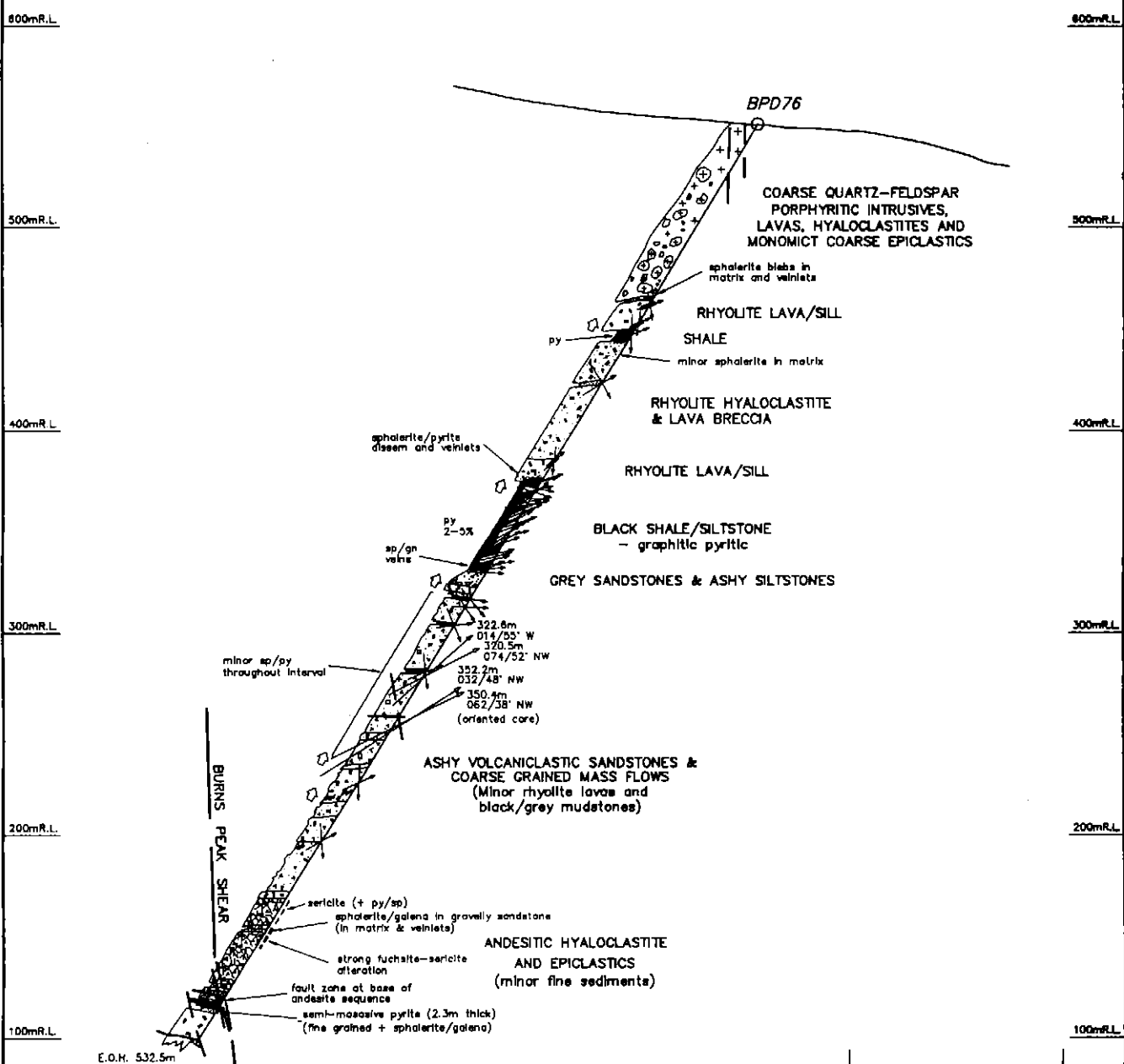
FROM	TO	REC	NREC	DEPTH (M.SUS)	DEPTH (WEIGHT (VOL) S.G)	FROM	TO	TICKET #	COMMENTS
259.3	262.4	3.2	103.23	262.4	0.01				NQ
262.4	265.5	3.1	100.00	265.5	0.02				NQ
265.5	268.5	3	100.00	268.5	0				NQ
268.5	271.5	3	100.00	271.5	0.01				NQ
271.5	274.5	3	100.00	274.5	0				NQ
274.5	277.5	3	100.00	277.5	0				NQ
277.5	280.2	2.6	96.00	280.2	0.01				NQ
280.2	283.3	3.1	100.00	283.3	0				NQ
283.3	286.4	3.2	103.23	286.4	0	288.5	369	137	2.69
286.4	289.5	3.1	100.00	289.5	0.02	288.7	171	71	2.41
289.5	292.4	2.8	96.55	292.4	0.02	288.9	367	145	2.53
292.4	294	1.8	112.50	294	0				NQ
294	295.7	1.6	94.12	295.7	0				NQ
295.7	298.4	3	111.11	298.4	0.02				NQ
298.4	301.4	2.9	100.00	301.4	0				NQ
301.4	304.4	3.1	103.33	304.4	0	300	390	157	2.48
304.4	307.5	3	96.77	307.5	0.01	300	401	160	2.51
307.5	310.5	3	100.00	310.5	0.01				NQ
310.5	313.5	3	100.00	313.5	0.01				NQ
313.5	316.5	3	100.00	316.5	0.03				NQ
316.5	319.5	3.1	103.33	319.5	0				NQ
319.5	322.5	3	100.00	322.5	0				NQ
322.5	325.5	3	100.00	325.5	0.02				NQ
325.5	328.5	3	100.00	328.5	0.02				NQ
328.5	331.5	3	100.00	331.5	0.01				NQ
331.5	334.5	3	100.00	334.5	0.01				NQ
334.5	337.5	3.1	103.03	337.5	0.01				NQ
337.5	340.5	3.1	103.33	340.5	0.01				NQ
340.5	343.5	3	100.00	343.5	0.01				NQ
343.5	346.5	3	100.00	346.5	0.02				NQ
346.5	349.5	3.1	103.33	349.5	0.01	350	677	253	2.68
349.5	352.5	3	100.00	352.5	0.02	350	564	221	2.55
352.5	355.5	3	100.00	355.5	0.01				NQ
355.5	358.5	3	100.00	358.5	0.01				NQ
358.5	361.5	3	100.00	361.5	0.03				NQ
361.5	364.5	3	100.00	364.5	0.04				NQ
364.5	367.5	3	100.00	367.5	0				NQ
367.5	370.5	3	100.00	370.5	0.03				NQ
370.5	373.5	3	100.00	373.5	0.05				NQ
373.5	376.5	3	100.00	376.5	0.03				NQ
376.5	379.5	3	100.00	379.5	0.03				NQ
379.5	382.5	3	100.00	382.5	0.03				NQ
382.5	385.5	3	100.00	385.5	0.02				NQ
385.5	388.4	3	103.45	388.4	0.03				NQ
388.4	391.5	3	96.77	391.5	0.02				NQ
391.5	394.5	3	100.00	394.5	0.03				NQ
394.5	395.6	1.15	104.55	395.6	0				NQ
395.6	397.5	1.8	94.74	397.5	0				NQ
397.5	400.5	3	100.00	400.5	0	400	649	248	2.62
400.5	403.5	3	100.00	403.5	0	400	647	257	2.52

FROM	TO	REC	NREC	DEPTH (M.SUS)	DEPTH (WEIGHT (VOL) S.G)	FROM	TO	TICKET #	COMMENTS
403.5	406.5	3	100.00	406.5	0.01				NQ
406.5	409.5	3	100.00	409.5	0.01				NQ
409.5	412.5	3	100.00	412.5	0				NQ
412.5	415.5	3	100.00	415.5	0.01				NQ
415.5	418.5	3	100.00	418.5	0.01				NQ
418.5	421.5	3	100.00	421.5	0.01				NQ
421.5	424.5	3	100.00	424.5	0.02				NQ
424.5	427.5	3	100.00	427.5	0.02				NQ
427.5	430.5	3	100.00	430.5	0.01				NQ
430.5	433.5	3	100.00	433.5	0				NQ
433.5	436.5	3	100.00	436.5	0.02				NQ
436.5	439.5	3	100.00	439.5	0.01				NQ
439.5	442.5	3	100.00	442.5	0				NQ
442.5	445.5	3	100.00	445.5	0.03				NQ
445.5	448.5	3	100.00	448.5	0.02				NQ
448.5	451.5	3	100.00	451.5	0.06	450	672	264	2.55
451.5	454.5	3	100.00	454.5	0.03	450	567	222	2.55
454.5	457.5	3	100.00	457.5	0.02				NQ
457.5	460.5	3	100.00	460.5	0.02				NQ
460.5	463.5	3	100.00	463.5	0.78				NQ
463.5	466.5	3	100.00	466.5	0.02				NQ
466.5	469.5	3	100.00	469.5	0.05				NQ
469.5	472.5	3	100.00	472.5	0.04				NQ
472.5	475.5	3	100.00	475.5	0.04				NQ
475.5	481.5	2.9	96.67	481.5	0.02				NQ
481.5	484.5	2.9	96.67	484.5	0.04				NQ
484.5	487.5	3	100.00	487.5	0.05				NQ
487.5	490.5	3	100.00	490.5	0.05				NQ
490.5	493.5	3	100.00	493.5	0.04				NQ
493.5	496.5	3	100.00	496.5	0.05				NQ
496.5	499.5	3	100.00	499.5	0.02				NQ
499.5	502.5	3	100.00	502.5	0.02	500	744	268	2.78
502.5	505.5	2.8	93.33	505.5	0.05	500	395	153	2.58
505.5	508.5	3	100.00	508.5	0.04				NQ
508.5	511.3	3	107.14	511.3	0.02				NQ
511.3	514.5	3	93.75	514.5	0.04				NQ
514.5	517.5	3	100.00	517.5	0				NQ
517.5	520.5	3	100.00	520.5	0				NQ
520.5	523.5	3	100.00	523.5	0.01				NQ
523.5	526.5	3	100.00	526.5	0.01				NQ
526.5	529.5	2.9	96.67	529.5	0.02				NQ
529.5	532.5	3	100.00	532.5	0.01				NQ

E.O.H. E.O.H. E.O.H. E.O.H. E.O.H. E.O.H. E.O.H. E.O.H. E.O.H. E.O.H. E.O.H. E.O.H. E.O.H. E.O.H.

041125

378 500mE 378 600mE 378 700mE 378 800mE 378 900mE



E.O.M. 532.5m

5 cm

PASMINCO EXPLORATION <small>A Division of Pasminco Australia Limited</small>	
COMPILED : L.W.K.	E.L. 44/88 - BURNS PEAK JV SUMMIT PROSPECT DRILL SECTION BPD76 LOOKING NORTH NORTHEAST
DATE : Rev. 1992	
DRAWN : G.M.B.	
REFERENCE :	
REVISIONS :	
DRIVING No. BPD76_A3	SCALE 0 20 40 m
	FIG. No. 18