

**COMPANY:** GOLDSTREAM MINING NL/TITAN RESOURCES NL  
**PROJECT:** MOINA RL 8810  
**HOLE NUMBER:** HS 003

<b>Commenced:</b>	01Jun94
<b>Completed:</b>	21Jun94
<b>Logged By:</b>	LA Newnham
<b>Drilled By:</b>	Dia. Drill Tas.

Purpose of Hole
To test the eastern margin of the Hugo Skarn between MD 39 and MD 43.

Comments on Completion
Hole passed through Moina Sandstone and Rowland Conglomerate to 134 metres, then into unit of intensely silicified sediments. If these were Moina Sandstone again, then the hole must have passed beneath an upturned skarn unit to the south.

**Collar Details**

Grid	Northing	Easting	Elevation	Dip	Bearing
AMG	5406430	423680	610	-90	-

Length (m)
199.6

Hole Size	
To (m)	Size
4.0	HW
50.8	HQ
199.6	NQ

Significant Core Loss Zones		
From	To	%Rec.

Hole Condition on Completion
All rods and casing withdrawn from hole.

**Summary of Results**

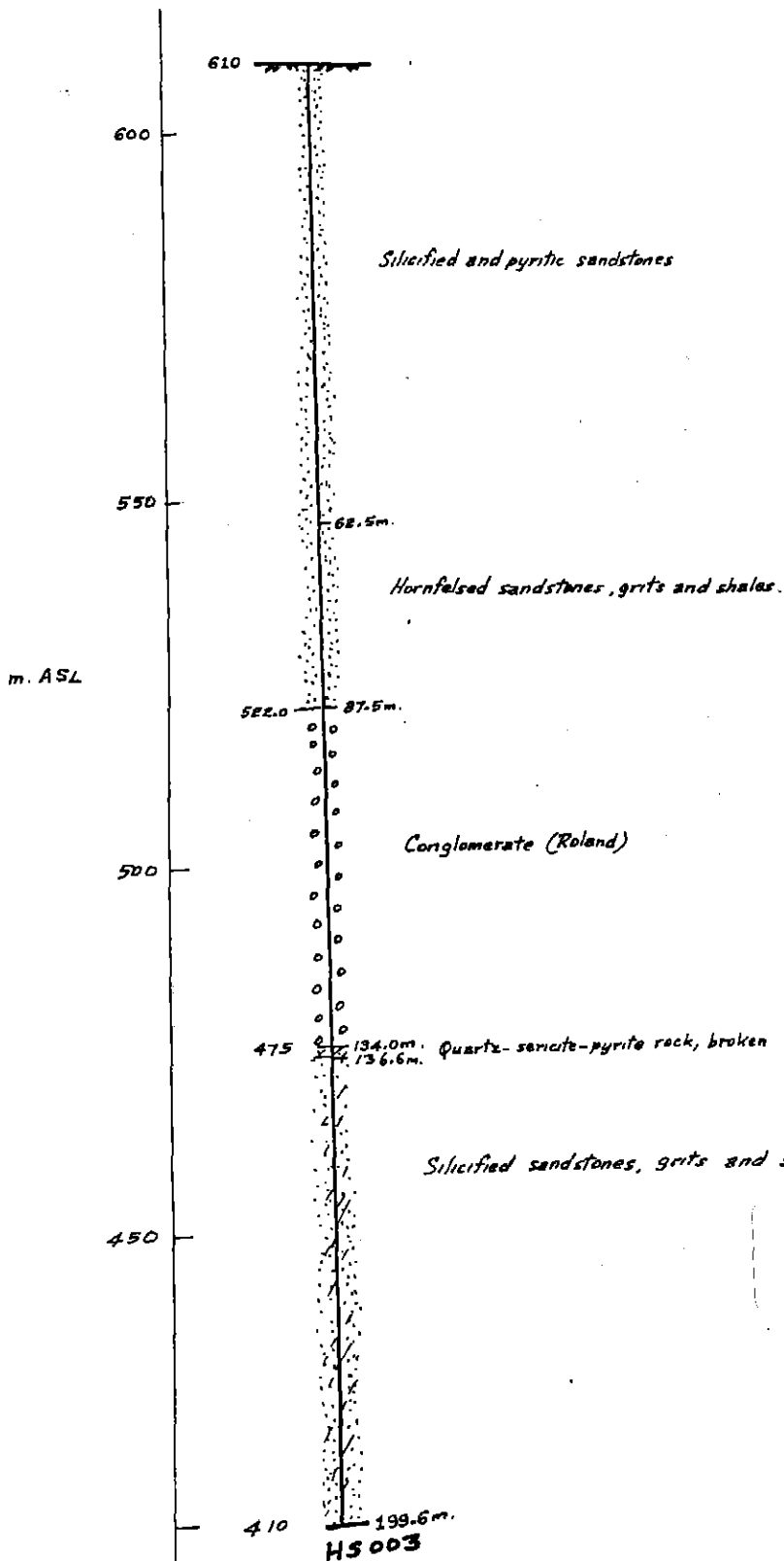
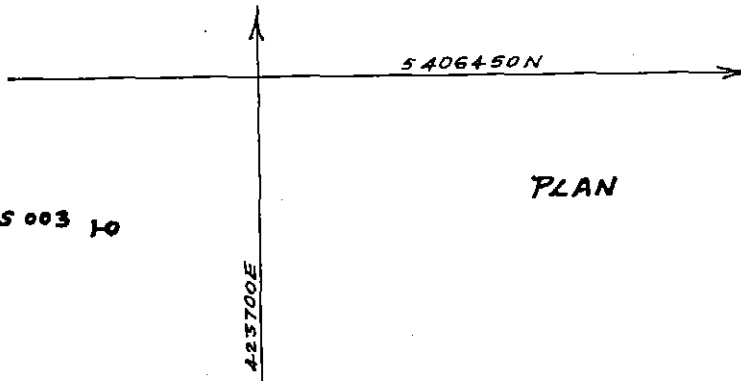
Depth		Recovery	Description	Assays							
From	To	%		Length	Au	Ag	Cu	Pb	Zn	As	S
			No significant mineralisation.								

184049



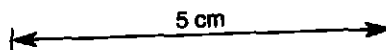
HS 003 10

PLAN



SECTION

No Significant Assays.



NEWNHAM EXPLORATION AND MINING SERVICES		
RL 8810 - MOINA AREA		
HUGO SKARN DRILLING		
DDH HS 003		
10m.	40	Scale: 1:1,000
Drawn: Z.A. Newham	Date: Sept 94	Figure:



COMPANY: GOLDSTREAM-TITAN  
 PROJECT: MOINA RL 8810  
 HOLE NUMBER: HS 003

Description		Core Recovery			RQD			Assays							
From	To	From	To	%	From	To	%	From	To	Au	Sn	W			
		0.5-1% disseminated pyrite in sandstone beds and on joint and fracture surfaces.													
		Core moderately broken along steep joints in sandstones and softer bedding planes in clay beds.													
87.5	134.0	<b>Rowland Conglomerate:</b>													
		88.6	93.6	100											
		93.6	94.8	80				104.6	105.6	0.01	9	10			
		94.8	97.6	100											
		Course quartz conglomerate with hard siliceous matrix, occasionally hematitic. 1-2% pyrite common in thin veinlets, disseminated in matrix and on joint surfaces.													
		97.6	100.6	90											
		100.6	121.6	100											
		121.6	124.6	30											
		124.6	136.6	100											
		Generally very hard and quite competent except for several narrow intervals (eg. 93.7-95.0).													
		Base of unit marked by dark grey grit unit.													
134.0	136.6	<b>Quartz-Sericite-Pyrite Rock:</b>													
		Grey fragmental rock, mainly quartz and grey-green sericite.													
		Highly fractured; some zones intensely pyritic, in fracture and disseminated as blebs and aggregates.													
136.6	190.6	<b>Silicified Sediments:</b>													
		136.6	138.6	70											
		To 145 m, massive white siliceous rock with irregular light green patches; quartz spotty in places.													
		138.6	163.4	100				144.6	145.6	<0.01	<4	<10			
		163.4	166.3	97				154.6	155.6	<0.01	<4	<10			
		166.3	167.3	80				157.2	158.2	<0.01	<4	<10			
		167.3	169.2	75				163.8	164.8	<0.01	5	15			
		Pyrite 2-3% disseminated in quartz and sericite, veinlets and as course in-filling on joint fracture surfaces.													
		169.2	184.6	100				170.8	171.8	<0.01	30	35			
		184.6	187.8	84				174.4	175.4	<0.01	4	15			
		187.8	190.6	100				182.6	183.6	<0.01	7	20			
		Below 145 m, massive siliceous rock with minor disseminated pyrite and trace													
								183.6	184.6	<0.01	4	10			
								184.6	185.6	<0.01	10	10			
								185.6	186.6	<0.01	8	<10			

101001

**COMPANY:** GOLDSTREAM-TITAN  
**PROJECT:** MOINA RL 8810  
**HOLE NUMBER:** HS 003

Description		Core Recovery			RQD			Assays							
From	To	From	To	%	From	To	%	From	To						
		chalcopyrite; brittle fracturing in several directions.  Below 151 m, soft green material reappears and pyrite becomes common veinlets, fracture filling, and disseminated in both siliceous and soft green materials.  Fragmental?/conglomeratic appearance in places.  Below 157 m, strongly silicified sandstone with sericitic fracture surfaces; pyrite 1-3% as veinlets, blebs and on fracture surfaces amount of sericite decreases below 160 m, 20 cm chlorite-garnet zone 163.9 m, coarse brown-red garnet clots.  Sandstone creamy appearance 168-170; cut by numerous 2-10 mm white quartz veins.  Below 170 m, sericite on fracture surfaces less common.  Below 174 m, more fragmented and sericitic; 5-20 mm quartz veining common; pyrite 1-2% in fractures and veinlets in sandstone.  Below 183 m, intensely fractured and brecciated sandstone with abundant 3-5% pyrite, occasionally up to 10%(near fault?).  Sericite common along fractures and surrounding pebbles.  Quartz veins common but post-date pyrite.													
190.6	193.6	<b>Altered Shale:</b>													
		190.6	193.6	66											
		Grey-buff brown soft altered unit; minor weathered/leached pyrite; 90 cm cavity.													

187032

