

PRSMINCO EXPLORATION  
DIAMOND DRILL CORE LOG

HOLE No. **YNC9**

PROJECT: YOLANDE: NEWTON CREEK

Vertical Scale 1 : 200

Page 1 of 10

DESCRIPTION					GRAPHIC			STRUCTURES
From	To	LITHOLOGY	ALTERATION	MINERALISATION	Depth	Lith	Structures	
0.00	27.50	DACITE Pale, Grey, Feldspar phynic, Possibly autoclastic in part. CONTACT: Indistinct,	Moderately Oxidised,		0			
					10			
					20			
27.50	32.50	DACITE Pink, Grey, Feldspar phynic, Zone of bleaching and detexturing associated with faults.	Moderately Bleached,					

BROKEN CORE, Zone of broken core, oxidised zone.

FALL. R 75, Brittle.

897202

PASMINCO EXPLORATION  
DIAMOND DRILL CORE LOG

HOLE No. **YNCS**

PROJECT: VOLANDE: NEWTON CREEK

Vertical Scale 1 : 200

Page 2 of 10

DESCRIPTION					GRAPHIC			STRUCTURES
From	To	LITHOLOGY	ALTERATION	MINERALISATION	Depth	Lith	Structures	
27.50	32.50	DACITE Pink, Grey, Feldspar phyrlic, Zone of bleaching and detexturing associated with faults. CONTACT: Indistinct,	Moderately Bleached.		30		FALLT, A 75, Brittle.	
32.50	40.00	DACITE Pink, Zone of pink alteration and detexturing associated with stockworking of quartz, carbonate and (very coarse grained dark green) chlorite. Core loss at 38.5 to 40m. CONTACT: Missing,	Highly Bleached.	VEIN, abundant in veins, abundant carbonate in veins.			FALLT, A 60, Brittle.	
40.00	54.40	DACITE Dark, Grey, Feldspar phyrlic, Zone of minor irregular carbonate veinlets minor breccia texture in part and minor irregular alteration throughout. CONTACT: Indistinct,	Slightly Bleached.		40		FRACTURE, Chlorite, Carbonate, Quartz. Zone with abundant stockwork chlorite-carbonate-quartz veining. Core is bleached pink. Core missing from 38.5 to 40m. Carbonate, Minor white carbonate veining in moderately broken core. FALLT, Brittle, Pug. FALLT, A 75, Brittle, Pug.	
					50			

897203

PASMINCO EXPLORATION  
DIAMOND DRILL CORE LOG

HOLE No. **YNCS**

PROJECT: YOLANDE: NEWTON CREEK

Vertical Scale 1 : 200

Page 3 of 10

DESCRIPTION					GRAPHIC			STRUCTURES
From	To	LITHOLOGY	ALTERATION	MINERALISATION	Depth	Lith	Structures	
					60			
64.40	75.80	DACITE Pink, Zone of red pink alteration and detexturing emanating from stockwork quartz carbonate chlorite veining. CONTACT: Gradational,	Highly Bleached.	VEIN. abundant in veins, abundant carbonate in veins.	70		Abundant fine white carbonate veins and fracture fillings.	
75.80	80.30	DACITE Pink, Zone of red alteration and detexturing emanating from a fault. CONTACT: Gradational,	Highly Bleached.		80		VEIN. Chlorite, Carbonate, Quartz. Abundant irregular dark green chlorite with carbonate and quartz veining in pink altered rock.	
80.30	84.30	DACITE Pink, Grey, Feldspar phyrlic, Zone with minor pink bleaching associated with fractures. CONTACT: Gradational,	Slightly Bleached.				FALLT. Brittle, Pug.	

5 cm

897204

PASMINCO EXPLORATION  
DIAMOND DRILL CORE LOG

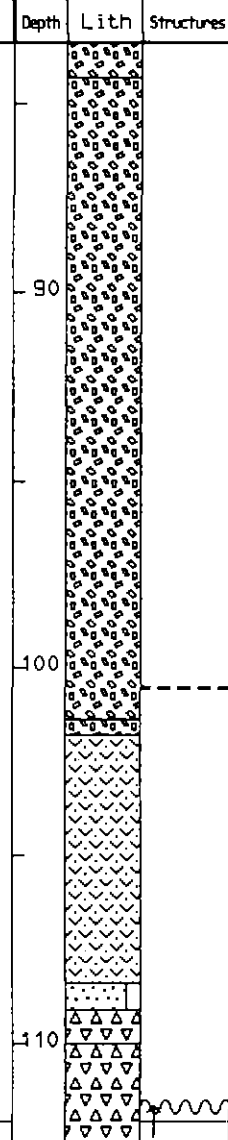
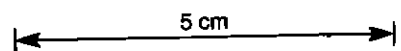
HOLE No. **YNCS**

PROJECT: YOLANDE: NEWTON CREEK

Vertical Scale 1 : 200

Page 4 of 10

DESCRIPTION				GRAPHIC			STRUCTURES
From	To	LITHOLOGY	ALTERATION	MINERALISATION	Depth	Lith	
84.30	101.40	DACITE Green, Grey, Massive, Feldspar phyrlic, Ubiquitous 1 - 3mm white feldspars, minor autobrecciation in part, minor carbonate veinlets throughout. CONTACT: Faulted.					
		DACITE Grey, Brecciated, Zone of faulting with pug at 35 degrees to LCR, and fracturing and white carbonate veining along the core. CONTACT: Faulted.					
		PUMICEOUS MASS FLOW CONTAINING CLASTS OF DACITE Pink, Grey, Coarse grained, Pumiceous, Lithic, Abundant 1 - 3mm pink feldspars and 3 - 5mm pink dacite clasts in a pale grey wispy pumiceous matrix. Minor 20cm grey dacite clasts. Possible fold at 105.8m. CONTACT: Conformable abrupt.					
101.40	108.40	SANDSTONE Pale, Green, Medium grained, Massive, Pumiceous, Pumiceous sandstone with only minor fine feldspars in bands. CONTACT: Conformable abrupt.					
		BRECCIA Green, Grey, Coarse grained, Poorly sorted, Polymict, Pumiceous, Clasts include abundant green mafics from underlying unit, also siliceous siltstones and white altered volcanics. Irregular gradation uphole into pumiceous sandstone and downhole into mafic derived sandstone.	Slightly Sericitised.				
108.40	109.10						
109.10	110.00		Slightly Sericitised.				
110.00	114.00	CONTACT: Gradational. BRECCIA CONTAINING CLASTS OF DACITE Green, Grey, Very coarse grained, Poorly sorted, Matrix supported,					
				DISSEMINATED, very minor barite			



FAULT, R 40. Brittle, Pug.

FOLD, Possible fold closure.

BEDDING, R 60. Grading

897205

PASMINCO EXPLORATION  
DIAMOND DRILL CORE LOG

HOLE No. **YNCS**

PROJECT: YOLANDE: NEWTON CREEK

Vertical Scale 1 : 200

Page 5 of 10

DESCRIPTION				GRAPHIC			STRUCTURES				
From	To	LITHOLOGY	ALTERATION	MINERALISATION	Depth	Lith					
		BRECCIA CONTAINING CLASTS OF DACITE Green, Grey, very coarse grained, Poorly sorted, Matrix supported, Polymict, Pumiceous, Clasts (from 5 to 50mm) include dacite, white siliceous altered volcanic, fine grained siltstone and pyritic siltstone. Matrix is pumiceous in part but grades up into massive mafic derived sandstone. Note 20cm siliceous white altered dacite clast. CONTACT: Conformable abrupt,		DISSEMINATED, very minor pyrite disseminated. Minor clasts of very fine grained massive pyrite..			Closure. BEDDING, A 60. Grading uphole.				
114.00	115.00	BRECCIA Grey, Green, Coarse grained, Clast supported, Polymict, Clasts (from 3 to 20mm) include mafics, white altered siliceous (quartz phyrlic?) volcanic, altered dacite and pumice. Grading upwards to thin shale band, mixed with pumice/feldspar layer. CONTACT: Conformable abrupt, BASALT Green, Medium grained, Coarse grained, Brecciated, Irregular monomict mafic clastic, clasts are of irregular size and distribution, fine grained in part. CONTACT: Faulted,			120		Abundant patchy carbonate. FAULT, A 40. Brittle, Pug.				
115.00	122.80				122.80			133.40	130	DISSEMINATED, very minor pyrite associated with alteration, Minor 10mm spots of massive fine grained pyrite associated with carbonate alteration and veining..	FIRST CLEAVAGE, A 60.
					PUMICEOUS MASS FLOW Grey, Pink. Pumiceous, Feldspar phyrlic, Abundant 1 - 3mm pink feldspars and minor diffuse chloritic patches in pale grey wispy pumiceous matrix. Minor 3 - 5mm pink dacite clasts. Minor irregular Mn carbonate veinlets throughout. CONTACT: Conformable mixed,			Slightly Sericitised.			
133.40	133.90	BRECCIA Cream, Green, Coarse grained, Irregular altered mafic breccia. CONTACT: Faulted,	Moderately Carbonatised,				FAULT, Brittle, Pug.				
133.90	137.30	DACITE Grey, Pink, Feldspar phyrlic, Altered on micro-fractures from faulted contact, becoming massive downhole.	Slightly Bleached.								
137.30	148.10	DACITE Pink, Massive, Feldspar phyrlic, Zone of pink potassic? alteration in massive feldspar phyrlic dacite with ghost perlitic texture. minor carbonate veinlets throughout. CONTACT: Gradational,	Highly Bleached.								

5 cm

807206

PRSMINCO EXPLORATION  
DIAMOND DRILL CORE LOG  
Vertical Scale 1 : 200

HOLE No. **YNC9**

PROJECT: YOLANDE: NEWTON CREEK

Page 6 of 10

DESCRIPTION					GRAPHIC			
From	To	LITHOLOGY	ALTERATION	MINERALISATION	Depth	Lith	Structures	STRUCTURES
		throughout. CONTACT: Gradational,			140			
148.10	159.70	DACITE Grey, Massive, Feldspar phyrlic, Minor carbonate veinlets throughout. CONTACT: Gradational,			150			FALLT, A 50, Brittle.
159.70	164.00	DACITE Pink, Massive, Feldspar phyrlic, Zone of pink alteration including alteration of feldspars. CONTACT: Gradational, .	Moderately Bleached.		160			FIRST CLEAVAGE, A 60,
164.00	180.90	DACITE Grey, Massive, Feldspar phyrlic, Autobreccia in part. Minor carbonate veinlets throughout. CONTACT: Gradational,						

5 cm

897207

PASMINCO EXPLORATION  
DIAMOND DRILL CORE LOG

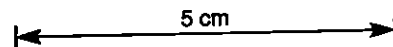
HOLE No. **YNCS**

PROJECT: YOLANDE: NEWTON CREEK

Vertical Scale 1 : 200

Page 7 of 10

DESCRIPTION					GRAPHIC			STRUCTURES
From	To	LITHOLOGY	ALTERATION	MINERALISATION	Depth	Lith	Structures	
					170			
180.90	184.30	DACITE Buff, Pink, Massive, Feldspar phyrlic, CONTACT: Gradational,	Moderately Bleached.		180			
184.30	188.20	DACITE Grey, Massive, Feldspar phyrlic, Minor auto-breccia texture in part. CONTACT: Gradational,						
188.20	193.10	DACITE Pink, Grey, Sheared, Feldspar phyrlic, Zone of irregular bleaching around a fault and associated fractures. CONTACT: Gradational,	Highly Bleached.		190			Minor fine white carbonate veining.
193.10	195.00	DACITE Pink, Massive, Feldspar phyrlic, CONTACT: Gradational,	Moderately Bleached.					BROKEN CORE, Possible crush zone with abundant chlorite and carbonate filled fractures.
195.00	209.40	DACITE Grey, Massive, Feldspar phyrlic, Minor irregular carbonate veining throughout. Zone of bleaching						



807208

PASMINCO EXPLORATION  
DIAMOND DRILL CORE LOG

HOLE No. **YNC9**

PROJECT: YOLANDE: NEWTON CREEK

Vertical Scale 1 : 200

Page 8 of 10

DESCRIPTION				GRAPHIC		STRUCTURES	
From	To	LITHOLOGY	ALTERATION	MINERALISATION	Depth		Lith
195.00	209.40	DACITE Grey, Massive, Feldspar phytic, Minor irregular carbonate veining throughout. Zone of bleaching surrounding quartz carbonate and chlorite vein. CONTACT: Gradational.			200		VEIN: Chlorite, Carbonate, Quartz. Massive dark green chlorite.
209.40	219.80	DACITE Pink, Massive, Feldspar phytic, Minor irregular carbonate veinlets. CONTACT: Gradational.	Moderately Bleached,	DISSEMINATED, very minor pyrrhotite associated with alteration. Minor disseminated to patchy pyrrhotite associated with alteration (possibly potassic?)..	210		
219.80	223.00	DACITE Grey, Massive, Feldspar phytic, CONTACT: Gradational.			220		
223.00	245.90	DACITE Buff, Pink, Massive, Feldspar phytic, Minor carbonate and potassic? alteration. CONTACT: Gradational.	Slightly Carbonatised. Moderately Bleached.				

5 cm

897209

PASMINCO EXPLORATION  
DIAMOND DRILL CORE LOG

HOLE No. **YNC9**

PROJECT: YOLANDE: NEWTON CREEK

Vertical Scale 1 : 200

Page 9 of 10

DESCRIPTION					GRAPHIC			STRUCTURES
From	To	LITHOLOGY	ALTERATION	MINERALISATION	Depth	Lith	Structures	STRUCTURES
223.00	243.50	ORCITE buff, pink, massive, Feldspar phytic, minor carbonate and potassic? alteration. CONTACT: Gradational,	Slightly Carbonised. Moderately Bleached.		230			
					240			
245.90	262.00	ORCITE Grey, Massive, Feldspar phytic, Minor fine chlorite flecks throughout.			250			
								VEIN, Quartz, Chlorite, Carbonate.

5 cm


897210

PASMINCO EXPLORATION  
 DIAMOND DRILL CORE LOG  
 Vertical Scale 1 : 200

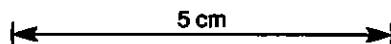
HOLE No. **YNCS**

PROJECT: YDLANDE: NEWTON CREEK

Page 10 of 10

DESCRIPTION				GRAPHIC			STRUCTURES
From	To	LITHOLOGY	ALTERATION	MINERALISATION	Depth	Lith	
					260		Minor fine white carbonate veinlets.
					270		
					280		

5 cm



897211

