

COMPANY: Goldstream-Titan
PROJECT: Stormont Mine
HOLE NUMBER: SD 30

Commenced:	November 95
Completed:	November 95
Logged By:	L A Newnham
Drilled By:	Dia. Drill Tas

Purpose of Hole
To test for gold in the mineralised skarn adjacent to the Stormont Fault to the south east of the former mine.

Comments on Completion
.A 30m. thick skarn zone was intersected beneath thin basalt cover. Clays beneath the basalt are interpreted as weathered limestone/skarn. Only minor gold(1.0m 0.34 Au) and low level zinc were intersected. Hole shows that the skarn zone extends well south of the Stormont open cut.

Collar Details

Grid	Northing	Easting	Elevation	Dip	Bearing
AMG	5405722.2	419056.0	674.5	-90	-

Length (m)
70.9

Hole Size	
To (m)	Size
70.9	HQ

Significant Core Loss Zones		
From	To	%Rec.
0.0	32.6	see log

Hole Condition on Completion
all rods and casing were withdrawn from the hole and a PVC collar pipe installed;

Summary of Results:

Depth		Recovery	Description	Assays					
From	To	%		Length	Au	Au d1	Zn	Bl	Mo
27.0	28.0	95	weathered skarn	1.0	0.34	0.45	360	60	<3
56.5	57.5	100	calc-silicate and skarn	1.0	0.16	0.17	97	5	<3

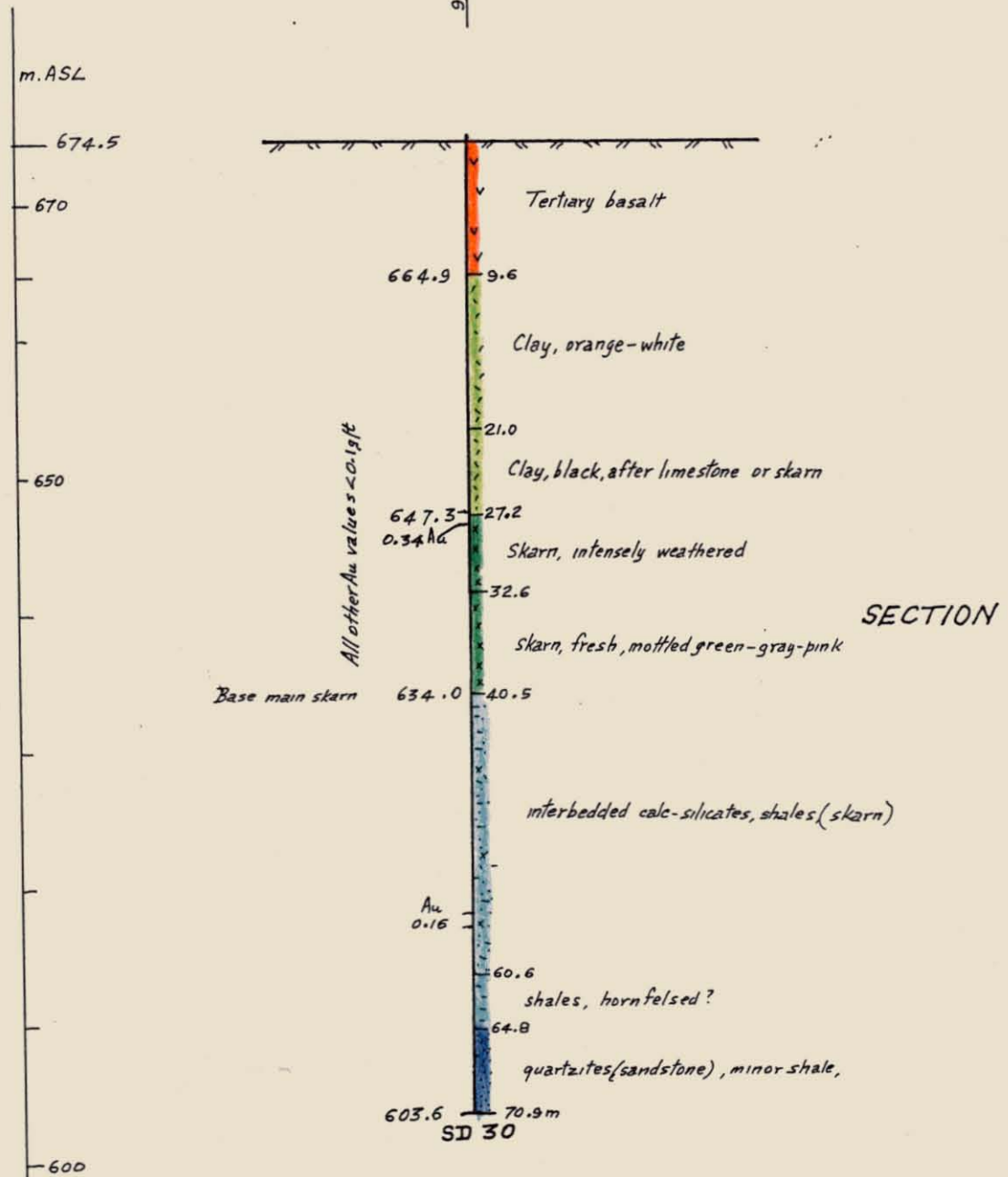
338027

SD 30
Collar 674.5

9.056E

5,722.2N

PLAN



SECTION

NEWNHAM EXPLORATION AND MINING SERVICES		
GOLDSTREAM-TITAN J/V.		
E.L.20/92-STORMONT AREA		
DDH SD 30		
0m.	20m	Scale: 1:500
Drawn: L.A. Newnham	Date: Jan. 96	Figure:

Description		Core Recovery			RQD			Assays							
From	To	From	To	%	From	To	%	From	To	Au	Au d1	Au d2	Zn	Bi	Mo
0.0	9.6	TERTIARY BASALT: tertiary basalt, very broken and weathered; fresh sections are dark gray with light spots;													
		0.0	2.1	24											
		2.1	3.6	90											
		3.6	5.1	67											
9.6	21.0	CLAY: orange-white clay; some quartzite fragments embedded in clay at 21m; rellict bedding suggests this unit may be weathered limestone rather than weathered basalt; generally good recoveries; (* driller 1 m. out in measurements)													
		5.1	6.6	55											
		6.6	7.2	85											
		7.2	9.6	85				9.6	11.1	<0.01			64	5	<3
		9.6	11.1	60				11.1	12.6	0.04			48	5	<3
		11.1	12.6	55											
		12.6	13.1	0				13.1	15.6	<0.01			37	5	<3
		13.1	15.6	100				15.6	17.1	<0.01			43	5	<3
		15.6	17.1	55				17.1	18.6	0.05			110	5	<3
		17.1	20.1	100				18.6	20.1	<0.01			145	5	<3
		20.1	21.6	60				20.1	21.6	<0.01			400	5	<3
21.0	27.2	BLACK CLAY (?after skarn?): black and dark gray pyritic clays; rellict bedding in top section of unit suggests may be formed from either limestone or skarn; crenulated and colliform texture near base of unit suggests derived from skarn seen fresh below; pervasive 1-2% pyrite, typically coarse grained and euhedral; occasionally as clusters and nodules; very sharp contact with unit below;													
		21.6	23.1	90				21.6	23.1	<0.01			780	5	<3
		23.1	27.2	100				23.1	24.7	<0.01			2500	10	<3
								24.7	26.0	<0.01			720	5	<3
								26.0	27.0	<0.01			340	5	<3
27.2	32.6	INTENSELY WEATHERED SKARN: mottled green-pink skarn with interbedded quartzite; severely weathered, probably after epidote-idocrase-garnet skarn; core soft and rubbly in places with some zones of significant core loss;													
		27.2	27.6	100				27.0	28.0	0.34	0.45	0.4	360	60	<3
		27.6	29.1	75				28.0	29.0	<0.01			740	5	<3
		29.1	30.3	42				29.0	30.0	<0.01			660	10	<3
		30.3	31.0	45				30.0	31.0	0.04			680	5	<3
		31.0	32.1	45				31.0	32.5	<0.01			400	5	<3
32.6	40.5	SKARN: mottled gray-green-pink epidote-idocrase?-garnet skarn; smaller reddish-brown garnet zones common; occasional 100-200 mm. dark gray-black diopside? zones with coarse pyrite; unit soft but fresh with good recoveries; prominent steep 5-10 mm. wide quartz-pyrite vein set 30 CA, ? small greisen veins;													
		32.1	32.6	80											
		32.6	40.5	100				32.5	33.5	<0.01			320	5	<3
								33.5	34.5	<0.01			280	10	<3
								34.5	35.5	<0.01			220	5	<3
								35.5	36.5	<0.01			280	5	<3
								36.5	37.5	<0.01	<0.01		220	5	<3
								37.5	38.5	<0.01			240	15	<3
								38.5	39.5	<0.01			260	10	<3

338029

Description		Core Recovery			RQD			Assays									
From	To	From	To	%	From	To	%	From	To	Au	Au d1	Au d2	Zn	Bi	Mo		
40.5	52.2	INTERBEDDED SKARN, ALTERED SANDSTONE and minor calc-silicates: soft mottled green-pink epidote-garnet skarn zones within a dark gray altered sandstone; minor intervals laminated gray-pink calc-silicates, probably altered shales; pervasive 1-3% pyrite, especially in the darker sandstone units, where typically present as large aggregates euhedral crystals; small flecks silvery mineral throughout; core very broken 45.3-48.0m, mainly quartzite rubble; strong vein/joint set 30 CA, typically infilled with vuggy crystalline quartz and pyrite;	40.5	52.2	100				39.5	40.5	<0.01			200	5	3	
										40.5	41.5	0.04	0.03	0.04	280	5	3
										41.5	42.5	<0.01			185	5	3
										42.5	43.5	<0.01			120	5	3
										43.5	44.5	<0.01			220	5	3
										44.5	45.5	<0.01			91	5	3
										45.5	46.5	0.01	<0.01	<0.01	320	<0.01	<0.01
										46.5	47.5	0.02	<0.01		65	5	3
										47.5	48.5	<0.01			135	5	3
										48.5	49.5	<0.01			110	5	3
							49.5	50.5	<0.01			115	5	3			
							50.5	51.5	0.02			83	5	3			
							51.5	52.5	0.03			83	5	3			
52.2	60.6	ALTERED SHALE/CALC-SILICATE and minor skarn: pink-dark gray banded rock, probably metasomatised /altered shale or calc silicate, interbedded with narrow intervals of pink-green garnet-epidote skarn; 1-2% fine grained disseminated pyrite in altered shales; banding/bedding 80 CA; core generally competent with some narrow fawn-green clay zones;	52.2	60.6	100				53.5	54.5	<0.01	<0.01		44	5	3	
										56.5	57.5	0.16	0.17		97	5	3
										57.5	58.5	<0.01			83	5	4
										58.5	59.5	<0.01			280	5	3
60.6	64.8	SHALE: dark gray fine grained laminated unit, probably a hornfelsed shale; narrow calc-silicate and skarn beds; bedding 80-85 CA; abundant clay filled micro veinlets <1 mm; pervasive fine euhedral pyrite <0.5%; gradational with unit below;	60.6	64.8	100				64.5	65.5	0.04	<0.01		145	10	3	
64.8	70.9	QUARTZITE with minor shale, skarn and calc-silicate interbeds: mottled light-dark gray hornfelsed sandstone-quartzite with narrow interbeds of dark gray hornfelsed shale; minor hard calc-silicate and epidote-garnet skarn intervals;	64.8	70.9	100				68.0	69.0	<0.01			99	20	3	
										69.0	70.0	<0.01			160	10	3

338030

