

COMPANY: Goldstream-Titan
PROJECT: Stormont Mine
HOLE NUMBER: SD 31

Commenced:	November 95
Completed:	November 95
Logged By:	L A Newnham
Drilled By:	Dia. Drill Tas

Purpose of Hole
To test for gold in the mineralised skarn adjacent to the Stormont Fault to the south east of the former mine.

Comments on Completion
.Intersected 34 vm. skarn beneath sheared quartzites, interpreted as a thrust fault which has pushed Molina Sandstone over the top of the skarn; skarn was low in gold (best 1m 0.11Au) but moderately anomalous in Bi, suggesting close proximity to gold mineralised zone;

Collar Details

Grid	Northing	Easting	Elevation	Dip	Bearing
AMG	5405838.6	418989.7	660.6	-90	-

Length (m)
63.0

Hole Size	
To (m)	Size
63.0	HQ

Significant Core Loss Zones		
From	To	%Rec.
0.0	8.0	see log
21.5	23.0	33

Hole Condition on Completion
all rods and casing were withdrawn from the hole and a PVC collar pipe installed;.

Summary of Results:

Depth		Recovery %	Description	Assays						
From	To			Length	Au	Au d1	Zn	Bi	Mo	

333032

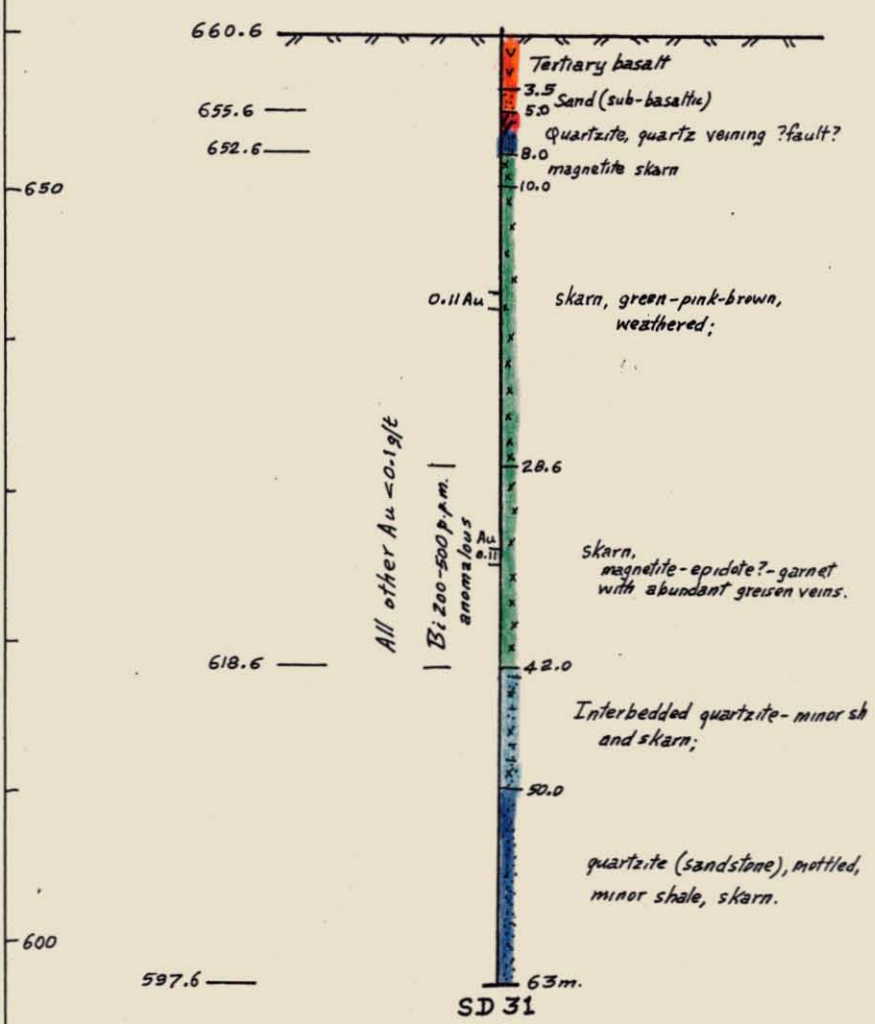
SD 31
Collar 660.6 R.L.

5,838.6N

PLAN

8,989.7E

m. ASL



SECTION

NEWNHAM EXPLORATION AND MINING SERVICES		
GOLDSTREAM-TITAN J/V.		
E.L. 20/92-STORMONT AREA		
DDH SD 31		
10m.	20m	Scale: 1:500
Drawn: L.A. Newnham	Date: Jan. 96	Figure:

Description		Core Recovery			RQD			Assays								
From	To		From	To	%	From	To	%	From	To	Au	Au d1	Au d2	Zn	Bi	Mo
0.0	3.5	TERTIARY BASALT: broken but fresh basalt; poor core recovery; magnetic;	0.0	3.5	20											
3.5	5.0	SAND: brown and white quartz sand; possibly developed on Ordovician surface beneath basalt; poor recovery;	3.5	5.0	20											
5.0	6.6	QUARTZITE AND QUARTZ VEINING: rubbly massive white quartz veining and white saccharoidal quartzite rubble; poor recovery;	5.0	6.6	55				5.0	6.5	0.03			13	10	4
6.6	8.0	QUARTZITE minor skarn: quartzite as above but lesser quartz veining; minor skarn-very weathered and friable;	6.6	8.0	65				6.5	8.0	<0.01			17	35	<3
8.0	10.0	MAGNETITE SKARN: dark gray-orange, intensely weathered limonitic skarn containing abundant magnetite;	8.0	10.0	90				8.0	9.5	0.04			140	600	8
									9.5	11.0	0.07			240	50	<3
10.0	28.6	SKARN: green-pink-brown skarn, intensely leached and weathered, very soft and friable; possibly originally an epidote-idocrase-garnet skarn; Irregular patches granular magnetite throughout 5-10%; minor clay filled veins at low CA angle, possibly weathered greisen veins; small grains silvery mineral in top half of unit;	10.0	14.0	90				11.0	12.5	<0.01			125	15	<3
			14.0	21.5	100				12.5	14.0	<0.01			360	10	<3
			21.5	23.0	33				14.0	15.0	0.06			360	10	<3
			23.0	28.6	100				15.0	16.0	0.04			190	20	<3
									16.0	17.0	<0.01			180	<5	<3
									17.0	18.0	0.11			900	20	<3
									18.0	19.0	0.03			460	15	<3
									19.0	20.0	<0.01			320	<5	<3
									20.0	21.0	<0.01			360	<5	<3
									21.0	23.0	<0.01			320	<5	<3
28.6	42.0	MAGNETITE SKARN WITH ABUNDANT GREISEN VEINS: magnetite-epidote-pyroxene-?garnet skarn with abundant greisen veins; in the upper part of the unit, the core has a dark (magnetite) and light (? epidote) banded	23.0	24.0	<0.01				23.0	24.0	<0.01			280	<5	<3
			28.6	42.0	100				24.0	25.0	<0.01			155	<5	<3
									25.0	26.0	0.05			105	<5	<3
									26.0	27.0	<0.01	0.02		150	65	<3
									27.0	28.0	<0.01			105	5	<3
									28.0	29.0	<0.01			105	45	<3

338034

Description		Core Recovery			RQD			Assays							
From	To	From	To	%	From	To	%	From	To	Au	Au d1	Au d2	Zn	Bi	Mo
28.6 cont.....	42.0							29.0	30.0	0.01	0.01		110	440	12
								30.0	31.0	<0.01			110	400	6
								31.0	32.0	<0.01			83	140	3
								32.0	33.0	0.07			72	500	3
								33.0	34.0	<0.01			85	320	4
								34.0	35.0	0.11			110	175	3
								35.0	36.0	0.06			145	340	3
								36.0	37.0	0.08			80	185	3
								37.0	38.0	0.02			71	240	4
								38.0	39.0	0.05			155	195	3
								39.0	40.0	<0.01			170	200	3
								40.0	41.0	<0.01			110	520	4
								41.0	42.0	<0.01	<0.01	<0.01	155	380	4
42.0	50.0	INTERBEDDED QUARTZITE-SKARN-CALC SILICATE:	42.0	50.0	100										
		gradational with unit above;						42.0	43.0	0.02	0.01		100	260	3
		light gray quartzite interbedded with mottled						43.0	44.0	0.01			71	160	3
		greenish diopside?-chlorite-epidote skarn,						44.0	45.0	0.01			33	30	4
		minor magnetite;						45.0	46.0	<0.01			42	50	6
		minor zones of banded fawn calc-silicates						46.0	47.0	<0.01			125	135	3
		(altered shales?);						47.0	48.0	<0.01			125	240	3
		greisen veins still common but not abundant						48.0	49.0	<0.01			80	65	3
		as in unit above, generally 5-10mm. wide and						49.0	50.0	<0.01			74	75	3
		strongly pyritic;													
		2-3% euhedral pyrite pervasive as coarse													
		clusters and aggregates;													
		core severely broken along several sericite													
		coated joint directions;													
50.0	63.0	QUARTZITES-CALC SILICATES-minor skarn:	50.0	56.5	100			50.0	51.0	<0.01			85	30	3
		gradational with unit above;						56.5	57.5	50					
		banded light-dark gray calc silicates (?altered						51.0	52.0	<0.01			115	50	3
		shales) near top of unit,BCA 70-80;													
		light-dark gray quartzite with irregular													
		mottled appearance due to minor green-brown													
		skarn component;													
		minor greisen veins;													
		<1% disseminated euhedral pyrite;													
		core very broken, reduced to rubble 55-58.5m.,													
		and 61-62.2; numerous sericitic joint sets;													
		END OF HOLE													

333035