

COMPANY: Goldstream-Titan
PROJECT: Stormont Mine
HOLE NUMBER: SD 39

Commenced:	December 95
Completed:	January 96
Logged By:	L A Newnham
Drilled By:	Dia. Drill Tas

Purpose of Hole
To test for gold in the mineralised skarn adjacent to the southern tip of the old tunnel from the open cut.

Comments on Completion
A 33m thick skarn zone was intersected, the top 19.6m. of which averaged 2.95 g/t Au; the bottom 4 m. of this zone averaged 9.7 Au; unit represent the SW extension of the mineralisation intersected in the main Stormont Mine open cut and adit;

Collar Details

Grid	Northing	Easting	Elevation	Dip	Bearing
AMG	5405916.5	418876.1	639.9	-70	074

Length (m)
61.5

Hole Size	
To (m)	Size
61.5	HQ

Significant Core Loss Zones		
From	To	%Rec.

Hole Condition on Completion
all rods and casing were withdrawn from the hole and a PVC collar pipe installed;

Summary of Results:

Depth		Recovery	Description	Assays							
From	To	%		Length	Au	Au d1	Zn	Bi	Mo		
0.0	19.6	100	complex skarn zone containing variable magnetite	19.6	2.95		186	944	9		
15.6	19.6	100	magnetite skarn	4.0	9.7	9.54	118	3495	4		

000000

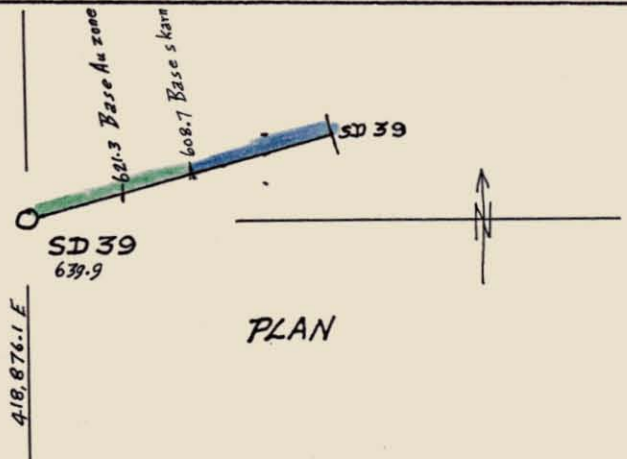
DOWN HOLE SURVEY DATA

COMPANY: Goldstream Mining-Titan Resources
PROJECT: Stormont Mine
HOLE NUMBER: SD 39

Depth (m)	Dip	Bearing (AMG)	Interval		Length (D)	Vertical Distance		Horizontal Distance		Co-ordinates			
			From	To		D.sin dip	R.L.	D. cos dip (HD)	Cumulative HD	N. distance HD. cos brg.	N. co-ordinate	E. distance HD. sin brg.	E. co-ordinate
COLLAR	-70	74					639.90		0.00		5,405,916.5		418,876.1
0	-70	74	0	30.75	30.75	28.90	611.00	10.52	10.52	2.90	5,405,919.4	10.11	418,886.2
61.5	-70	74	30.75	61.5	30.75	28.90	582.11	10.52	21.03	2.90	5,405,922.3	10.11	418,896.3
61.5													
no down hole surveys													
hole assumed straight													

003067

5,405,916.5 N



PLAN

m. ASL

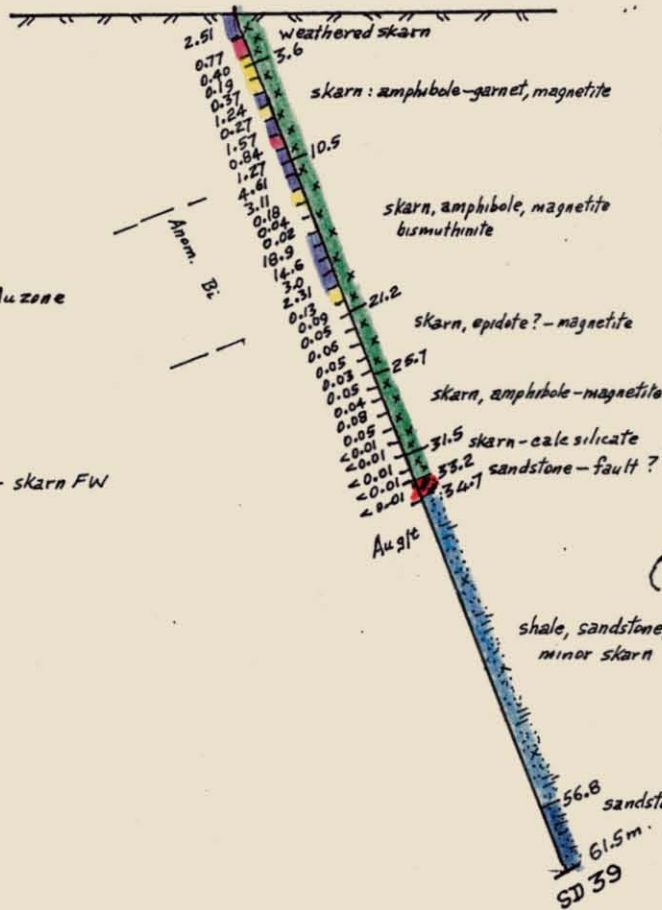
639.9

621.3 Base Au zone

608.7 skarn FW
608.0 Fault.

600

582.1



SECTION
(DIP PROFILE)

5 cm

NEWNHAM EXPLORATION AND MINING SERVICES

GOLDSTREAM-TITAN J/V.
E.L.20/92-STORMONT AREA
DDH SD 39

10m.	20m	Scale: 1:500
Drawn: L.A. Newnham	Date: Jan. 96	Figure:

Description		Core Recovery			RQD			Assays							
From	To	From	To	%	From	To	%	From	To	Au	Au d1	Au d2	Zn	Bi	Mo
0	3.6	WEATHERED SKARN: green-orange intensely weathered skarn; all joint and fracture surfaces coated with steel gray hematite?/ manganese or possibly a bismuth sulfur salt; minor wispy magnetite in places;		0	3.6	100		0	1.6	2.51	3.15		380	840	48
								1.6	3.1	0.77	0.76		300	280	18
								3.1	3.7	0.4			320	125	16
3.6	10.5	SKARN: very dense green (augite/? actinolite) skarn with pink patches (garnet/? idocrase) with some streaky zones of hematite/magnetite; several intensely weathered limonitic zones are more magnetite rich; trace? bismuthinite;		3.6	10.5	100		3.7	4.7	0.19			170	110	4
								4.7	5.6	0.37			280	195	4
								5.6	6.6	1.24	1.28		135	360	<3
								6.6	7.6	0.27			53	20	<3
								7.6	8.6	1.57	1.75		82	170	4
								8.6	9.6	0.84	0.78		48	115	6
								9.6	10.6	1.27	1.17		56	135	10
10.5	21.2	MAGNETITE SKARN: streaky green (diopside-actinolite?) and reddish brown hematite-magnetite skarn; bismuthinite associated with magnetite; core competent, few weathered and broken limonitic zones;		10.5	21.2	100		10.6	11.6	4.61	4.45		170	780	4
								11.6	12.6	3.11	2.84		560	740	4
								12.6	13.6	0.18			160	40	4
								13.6	14.6	0.04			95	15	<3
								14.6	15.6	0.02			145	20	4
								15.6	16.6	18.9	19.2		110	7300	4
21.2	25.7	SKARN: magnetite- diopside-epidote-garnet/idocrase skarn; magnetite concentrated in abundant thin veinlets 30-40 CA; also bands green honey colored mineral, ? epidote;		21.2	25.7	100		16.6	17.6	14.6	13.9	13	83	3800	<3
								17.6	18.6	3	2.67		125	880	4
								18.6	19.6	2.31	2.39		155	2000	4
								19.6	20.6	0.13			135	660	6
								20.6	21.6	0.09			135	55	4
								21.6	22.6	0.05			105	30	<3
								22.6	23.6	0.06			135	200	4
25.7	31.5	SKARN: magnetite-actinolite-augite skarn, dark gray - black, with some lighter green- pink (epidote/idocrase/garnet) skarn; several greisen veins consisting of soft white fibrous mineral and white saccharoidal mineral;		25.7	31.5	100		23.6	24.6	0.05			320	45	<3
								24.6	25.6	0.03			105	25	<3
								25.6	26.6	0.05			130	40	4
								26.6	27.6	0.04			185	25	4
								27.6	28.6	0.08			300	260	6
								28.6	29.6	0.05	Sn	W	115	200	4
								29.6	30.6	<0.01	105	70	130	480	4
								30.6	31.6	<0.01	62	<10	85	260	<3
31.5	33.2	INTERBEDDED CALC SILICATE-SKARN: Interbedded dark green mottled diopside skarn and light brown epidote ? calc silicate rocks; BCA 65;		31.5	33.2	100		31.6	32.6	0.01	45	15	155	195	4
								32.6	33.2	<0.01	19	<10	110	45	<3

003009

