

CRA EXPLORATION PTY. LIMITED
DRILL-HOLE SUMMARY LOG

HOLE NAME: DD95DB111 AMG EAST 366311 NORTH 5361431
 PROSPECT: BLACKJACKS GRD EAST 67171 NORTH 61700
 EL: MT. DUNDAS EL45/92 RL DEPTH 289m.

DATE DRILLED: 2/3/95

LOGGED BY: S.J. TEAR

DRILLING CO.: DIAMOND DRILLING TAI.

DRILL TYPE: DIAMOND

DRILL RIG: L738

LOC DRILL CORE: 2 SECTION

SURVEYS:					
DEPTH (m)	AZIM (AMG)	DIP	DEPTH	AZIM (AMG)	DIP
0	077°	45°	289	076°	41°
52	079.5°	43.5°			
100	080°	41.0°			
151	077°	40.5°			
205	077°	40°			
253	076°	41°			

OBJECTIVES OF HOLE:

Drill test the basal sandstone contact of the Gordon Limestone in particular the extensive siderite zone. Also testing air-core end-of-hole sample with 3% Spinc on sphalerite.

LITHOLOGICAL SUMMARY:

FROM	TO	FORM CODE	COMMENTS
0	3.0	Qha	Overburden; no recovery
3.0	164.8	Ogul	Argillaceous calcarenites with laminated micrite units and minor fault zones; occ siderite
164.8	191.5	Ogdl	Partially dolomitised argillaceous calcarenite + fine grained micritic calcarenite
191.5	196.06	Ogsd	Siderite unit with zones of hematitically altered limestone/calcarenite.
196.06	224.2	Ogdl	Partially dolomitised recrystallised calcarenite - possibly fault altered with hematitically altered zones; also inc laminated units; +/- locally siderite.
224.2	245.4	Ogsd	Siderite unit with clay zones + hematite alteration - dolomitic
245.4	253.7	Ogdl	Partially dolomitic limestone - locally extensive
253.7	268.5	Ogsd	Siderite unit with dolomite + dark grey clays + fault zones
268.5	273.85	Ogst	Silty Transition unit - mixed dolomitic siltstones + sandstones
273.85	282.7	Om	Mixed quartzites (siltstones)
282.7	289.0	Om	Fine grained fawn coloured quartzite - banded appearance +/- siltstones

MINERALISATION SUMMARY:

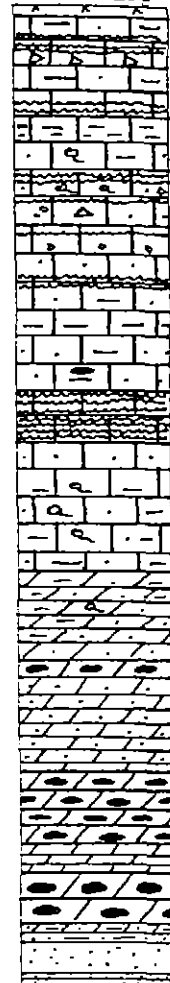
FROM	TO	COMMENTS
74.9	75.2	4.5% Zn as sphalerite hosted by a limestone breccia proximal to a calcite vein.
167.84	168.63	0.7% Zn as disseminated sphalerite associated with hematitised, dolomitic limestone.
267	267.9	0.22% Zn sideritic clay gouge with dolomite fragments.

CONCLUSIONS:

Bedding @ 17m 80° to c/a @ 84m 65° to c/a @ 145m 75° to c/a @ 192m 60° to c/a @ 219m 80° to c/a @ 272m 75° to c/a @ 282m 90° to c/a.

Drillhole intersected a major sideritic zone in association with extensive partial dolomitisation. Zinc grades in siderite are low. Contact between Gordon Limestone and Moira Sandstone may be a thrust see DD95DB110.

Graphic Log



100

240

300

C.R.A. EXPLORATION PTY. LIMITED
DRILL CORE LOG

SHEET No. 1 of 18

TENEMENT NAME BLACK JACK No. 10918
PLAN - MAP REFERENCE.....

CO-ORDINATES 366311E AZIMUTH..... DRILLERS DDTAS COMMENCED 2.3.95 DEPTH 289m HOLE No. DB1101
RL COLLAR 5361431N INCLINATION 45° DRILL TYPE LY38 COMPLETED 15.3.95 CASING LEFT..... DPO No(s).....

DEPTH		Core Rec. %	RQ DATA	Graphic Log	CORE DESCRIPTION	SPECIAL FEATURES Weath, Alteration, Fracturing, Veining, Mineralization	Sample No.	From (M)	To (M)	Rec (M)	ASSAY VALUES (Analysed by.....)						
From (M)	To (M)																
0	3.0	0	0	OB	Overburden - NO recovery												
3.0	5.5	75	3	Ogul.	Dark grey/black partially rotted limestone												
5.5	12.85	100	1	Ogul.	Grey fine grained calcarenite with dark grey argillaceous mud grain calcarenite in bands - locally bioclastic. minor bioturbation	Occ calcite vein 0.5 - 3cm. 90° E. c/A, 80° E. c/A, 40° E. c/A. Cleavage. 50° E. c/A. Bedding 30° E. c/A.											
12.85	14.3	100	1	Ogmu.	Fine grained grey calcarenite well laminated - laminae becoming more argillaceous at base.	Calcite veining parallel to cleavage 35° E. c/A. St. surge? Coriol @ 11.5-11.7m											
14.3	16.3	100	1	Ogul.	Mixed unit of varying limestone including? Sign sedimentary breccias.	Calcite ?ung in all.											
16.3	17.0	100	1	Ogmu.	Laminated fine grained grey calcarenite + dark grey argillite	Bedding 30° E. c/A.											
17.0	19.01	100	1	Ogul.	Interbedded fine grained grey calcarenite - micritic and darker fine grained calcillite (argillaceous) Coarsening upwards bands. Also 3 bands < 1cm of coarsely bioclastic calcarenite	Bedding 75° E. c/A.											

696056

C.R.A. EXPLORATION PTY. LIMITED
DRILL CORE LOG

SHEET No. 5 of 18

TENEMENT NAME BLACKJACK PLAN - MAP REFERENCE

CO-ORDINATES 366311E AZIMUTH DRILLERS DDTAS COMMENCED 2.3.95 DEPTH 289m HOLE No. DB111
RL COLLAR 5361431N INCLINATION 45° DRILL TYPE LY38 COMPLETED 15.3.95 CASING LEFT DPO No(s)

DEPTH		Core Rec. %	RQ	Graphic Log	CORE DESCRIPTION	SPECIAL FEATURES Weath, Alteration, Fracturing, Veining, Mineralization	Sample No.	From (M)	To (M)	Rec (M)	ASSAY VALUES (Analysed by.....)				
From (M)	To (M)														
75.85	77.20	100	1	Ogul	Brecciated fine grained calcarenite (+ calcisilite) matrix calcarenite coarsening downhole.	Brecciation due to calcite veining; vein outcrop 45° c/A. (or 90° c/A) Manganese staining of some veins.	86	75.80	76.67			87.0	91.00	4.0	100
												91.0	94.0	2.0	66
												94.0	97.0	1.0	33
												97.0	100.0	3.0	100
												100.0	103.0	3.0	100
77.2	78.6	100	1	Ogul	red grained calcarenite with calcite veining, locally coarsely bioclastic.							103.0	105.6	2.6	100
												105.6	108.4	1.6	60
												108.4	109.4	1.0	100
												109.4	111.0	1.0	66
78.6	84.75	100	1	Ogul	Laminated micrite + red grained calcarenite unit.	Bedding 60° c/A						111.1	114.4	3.2	95
												114.4	118.0	3.0	80
												118.0	119.9	1.9	100
84.75	83.0	100	1	Ogul	Disrupted unit of fine grey calcarenite with argillite and dark calcarenite.	localised calcite brecciation 82.6 - 82.8						119.9	125.0	3.7	66
												125.0	127.0	1.3	66
												127.0	130.0	2.5	80
												130.0	132.8	0.2	7
83.0	83.7	100	1	Ogul	Laminated micrite + calcarenite unit.	Bedding 65° to c/A.						132.8	134.0	0.4	33
												134.0	136.0	0.8	40
												136.0	138.6	2.0	70
83.7	90.5	100	1	Ogul	Fine grained grey calcarenite and dark grey argillaceous calcarenite - bioturbated locally more argillaceous + recrystallised + bioclastic zones.	Solitary calcite veins <1cm. ~ 30° to c/A Bedding 60° to c/A.						138.6	142.0	3.2	95
												142.0	143.8	1.8	100
												143.8	145.4	1.6	100
												145.4	148.0	2.6	100
												148.0	151.0	3.0	100
90.5	92.15	100	1	Ogul	Recrystallised limestone unit - Argillaceous unit?							151.0	154.0	3.0	100
												154.0	157.0	3.0	100
92.15	97.00	30	4x	Ogul	Cracks? fault zones.							157.0	160.0	2.7	90
												160.0	163.0	0.5	17
97.00	97.5	100	1	Ogul	Argillaceous (recrystallised) dominant fine calcarenite unit. Unseen bedding contacts							163.0	166.0	3.0	100
												166.0	169.0	3.0	100
												169.0	172.0	3.0	100

696060

C.R.A. EXPLORATION PTY. LIMITED
DRILL CORE LOG

TENEMENT NAME BLACK JACK No. 9 of 18

SHEET No.

CO-ORDINATES 366311 E AZIMUTH DRILLERS DDTAS COMMENCED 2.3.95 DEPTH 289 m HOLE No. DB111
RL COLLAR 5361431 N INCLINATION 45° DRILL TYPE LY38 COMPLETED 15.3.95 CASING LEFT DPO No(s)

DEPTH		Core Rec	RQ	Graphic Log	CORE DESCRIPTION	SPECIAL FEATURES Weath, Alteration, Fracturing, Vainng, Mineralization	Sample No.	From (M)	To (M)	Rec (M)	ASSAY VALUES (Analysed by			
From (M)	To (M)													
162.6	164.8	890	2	Ogdl.	Fine grained grey calcarenite with aristite; localised bioclatic (coarse) beds; locally laminated	Bedding 70° to c/a.					1724	1737	1.7	100
											1737	1762	2.5	100
											1762	178.0	1.8	100
											1790	181.0	2.0	100
164.8	168.2	100	1	Ogdl.	light grey fine grained calcarenite (with aristite) with calcite (thick) veining + alteration - red alteration (some brick red colour) cut by a later veins.	Calcite veins - irregular cont'd. (15° E c/a over cross cut by 70° to c/a zone) Partial dolomitisation.	414	200	165.05	166.4	1810	184.0	1.35	40
							201		166.4	167.84	184.0	187.0	3.0	100
							202		167.84	168.63	187.0	189.7	1.7	100
											1997	191.5	0.6	33
											1915	193.0	0.1	7
											1930	196.6	0.8	50
168.2	169.5	100	1	Ogdl.	Fine grained grey calcarenite with aristite grading into a more micritic unit.	Partially dolomitised breccia zone 168.2-168.45 - minor sphalerite.					1946	195.8	0.6	50
											1958	197.8	2.0	100
											1978	199	0.4	66
											199	201.8	2.8	100
169.5	171.8	100	1	Ogdl.	Weakly laminated micritic unit. with aristite passing down into a fine grained (ft) grey calcarenite minor stylitites - ? alteration partially dolomitised red alteration very local. associated with dol breccia.	Partially dolomitised breccia zones @ 170.5 - 170.8 m. Dolomite @ 171.15 - 171.30 m. with disseminated sphalerite - fine grained cut/dol vein 35° E c/a.	203	169.5	170.43		201.8	205	3.2	100
							414	204	170.43	171.46	205	207.2	1.4	70
											2072	209.2	1.9	90
											2092	211	1.9	100
											211	214	3.0	100
											214	217	3.0	100
											217	220	3.0	100
											220	223	3.0	100
171.8	174.9	100	1	Ogdl.	Fine grained grey calcarenite (micritic) with darker red grained aristite calcarenite						223	226	1.8	60
											226	228.7	1.3	50
											228.7	230.6	1.0	50
											230.6	231.9	1.3	100
174.9	176.0	100	2	Ogdl.	Breccia zone - cal/dol veining of dark grey calcarenite Different to above Ogdl. no red alteration.						231.9	235.0	1.0	33
											235.0	238.0	3.0	100
											238	241.8	3.0	100
											241	244	2.0	66
											244	245.4	0.9	50

696064

