

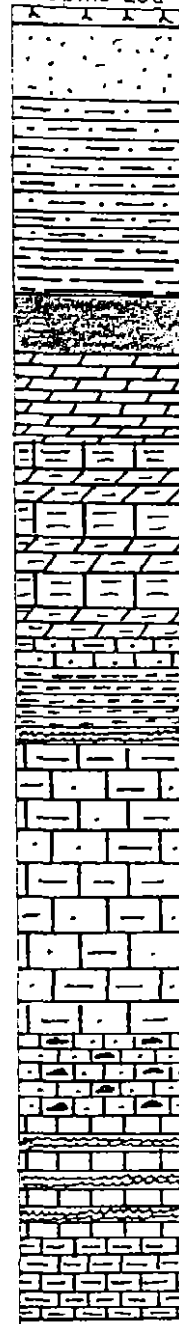
DRILL-HOLE SUMMARY LOG

HOLE NAME: DD95DS98 AMG EAST 365725 NORTH 5357671
 PROSPECT: SUNNY CORNER GRID EAST 65290 NORTH 57726
 EL: MT. DUNDAS EL45/92 RL DEPTH 345.7m

DATE DRILLED: 4/5/95
 LOGGED BY: S.J. TEAR
 DRILLING CO.: DIAMOND DRILLING TAS.
 DRILL TYPE: DIAMOND
 DRILL RIG: LY38
 LOC DRILL CORE: ZEEHAN

SURVEYS:					
DEPTH	AZIM (AMG)	DIP	DEPTH	AZIM (AMG)	DIP
0	45°	45°	300m	46.5°	48°
50m	46°	47.5°			
104m	46°	48°			
149m	47°	49.5°			
198m	45°	51.5°			
250m	47°	50.5°			

Graphic Log



OBJECTIVES OF HOLE:
 DIAMOND DRILL TEST OF UPPER SANDSTONE / LIMESTONE CONTACT - BEST
 AIR-CORE RESULT 15m @ 3.6% Zn. DEPENDING ON LIMESTONE THICKNESS
 WILL TEST LOWER SANDSTONE / LIMESTONE CONTACT

LITHOLOGICAL SUMMARY:

FROM	TO	FORM CODE	COMMENTS
0	4.5	Qpa	Overburden; no recovery
4.5	24.0	Sc	Massive med grained sandstone - Crotty Quartzite
24.0	61.1	Sc	Mixed quartzites and silts + shales - Crotty Quartzite
61.1	75.15	Sc	Dark grey ?sheared quartzites and clays - Crotty Quartzite
75.15	90.7	Ogdc	Dark grey clay unit
90.7	114.7	Ogul	Upper Dolomite Unit with clay zones
114.7	166.0	Ogul	Rotted argillaceous limestone with zones of calcareous clays
166.0	173.7	Ogul	Argillaceous calcarenites
173.7	189.5	Ogsi	Siltstone Unit.
189.5	193.5	Ogmu	Laminated micrite unit
193.5	269.8	Ogul	Argillaceous bioclastic calcarenites with minor fault zones
269.8	286.5	Ogul	V: distinctive bioturbated fine grained argillaceous calcarenite with ?stromatolites; micrite nodules + bioclasts. Dolomitic
286.5	323.7	Ogul	Micritic calcarenites with laminated units + cavities + faults
323.7	345.7	Ogul	Faulted zone of argillaceous calcarenites and clays

345.7m

MINERALISATION SUMMARY:

FROM	TO	COMMENTS
310.8	311.72	10% Zn as sphalerite ?vein related; iron-rich sphalerite
313	313.92	6.2% " " " " " "
67.8	69.5	0.56% Zn as sphalerite; shear related crotty quartzite - ?shale
75.15	76.5	0.57% Zn as sphalerite; dark grey clay ?quartzite or limestone?
314.5	316	0.55% Pb as galena blebs (<1cm) in limestone.

CONCLUSIONS:

Sphalerite mineralisation found at surface and in air-core drilling is represented as a 32m wide anomalous zone of ^{weak} zinc mineralisation across the ?sheared Upper Sandstone (limestone contact).

C.R.A. EXPLORATION PTY. LIMITED
DRILL CORE LOG

TENEMENT NAME SUNNY CORNER SHEET No. 1 of 14
No. 14

CO-ORDINATES 365725 E AZIMUTH..... DRILLERS DDTAS COMMENCED 3.5.95 DEPTH 345.7m HOLE No. DS98
RL COLLAR 5357671N INCLINATION 45° DRILL TYPE L738 DDM COMPLETED 6.6.95 CASING LEFT..... DPO No(s).....

DEPTH		Core Rec %	RQ DATA	Graphic Log	CORE DESCRIPTION	SPECIAL FEATURES Weath, Alteration, Fracturing, Veining, Mineralization	Sample No.	From (M)	To (M)	Rec (M)	ASSAY VALUES (Analysed by.....)								
From (M)	To (M)										Rec (g)	Rec (%)	Rec (g)	Rec (%)					
0	4.5	0		Qha	Overburden no recovery														
4.5	17.0	20	3	Sc	Grey weathered med grained quartzite with locally coarse bands, with pinkered zones	bedding 30° to c/a													
17.0	24.0	90	3x	Sc	Med fine grained quartzite - less weathered + more siliceous than dense unit; lt grey locally med. grained + locally greenish tinge.	② 21.3 bedding 65° to c/a													
24.0	29.2	90	1	Sc	Grey/green banded med/fine grained quartzite; localized coarser grained bands, possible x-bedding.	② 26.5 bedding 40° to c/a. minor qtz veining 35° to c/a.	546564	24.0	25.4										
29.2	29.3	100	5	Sc	Clay gouge - fault 60° to c/a														
29.3	37.8	70	3	Sc	Sheared grey/green fine grained quartzite possibly with clay gouges. banded	lt. minor quartz veining clay gouge 10cm @ 37.7 90° to c/a @ 37.1 90° to c/a (15cm) @ 37.7 10cm 80° to c/a.													
39.8	41.5	55	4c	Sc	Grey fine grained quartzite with laminated bedding	Bedding 75° to c/a / 85° to c/a slightly folded.													
41.5	43.1	90	5x	Sc	Grey quartzite brecciated with clay zones.	Fracturing sets parallel to c/a	546564	41.5	43.1										

DELETED CORE MAX 3.7m
DROPPED CORE MAX 4.7m

696098

C.R.A. EXPLORATION PTY. LIMITED
DRILL CORE LOG

SHEET No. 4

TENEMENT NAME SEAWAY CORNER No. 579

PLAN - MAP REFERENCE

CO-ORDINATES 365725E AZIMUTH..... DRILLERS ODTAS COMMENCED 3.5.95 DEPTH 345.7 HOLE No. D398
RL COLLAR 5357671N INCLINATION 45° DRILL TYPE LX 38 COMPLETED 6.6.95 CASING LEFT..... DPO No(s).....

DEPTH		Core Rec %	RQ DATA	Graphic Log	CORE DESCRIPTION	SPECIAL FEATURES Weath, Alteration, Fracturing, Veining, Mineralization	Sample No.	From (M)	To (M)	Rec (M)	ASSAY VALUES (Analysed by.....)			
From (M)	To (M)										Fe (%)	Pb (%)	Zn (%)	Cu (%)
90.7	92.5	90	5x	Ogud	Dark grey dolomitised limestone - broken angular core with minor clay zones		27	90.0	89.5		58.2	61.1	1.7	74
							28	89.5	90.7		61.1	62.5	0.7	50
							29	90.7	92.5		62.5	63.7	1.0	83
							5465630	92.5	93.7		63.7	65.2	1.5	100
92.5	97.4	7	5x	Ogud	Broken, angular dark grey dolomite - major core loss - (note clay on surfaces of core can react to acid).		31	93.7	95.5		65.2	67.0	0.9	50
											67.0	68.5	1.0	66
											68.5	70.0	1.5	100
											70.0	71.5	0.9	60
											71.5	72.5	0.3	30
											72.5	74.5	0.5	25
97.4	102.1	95	5	Ogdc	Dark grey/black clay ore with dark grey dolomitic fragments. (angular)		32	97.4	98.5		74.5	75.3	0.6	75
							33	98.5	100.3		75.3	76.5	0.4	33
							34	100.3	102.1		76.5	77.5	0.2	20
											77.5	78.0	0.1	20
											78.0	81.6	0	0
102.1	106.4	100	5x	Ogud	Angular dolomite fragments with black clay zones. Brecciated appearance.	minor calcite veining	35	102.1	104.5		81.6	82.1	0.5	100
							36	104.5	106.4		82.1	83.5	0.9	64
											83.5	84.1	0	0
											84.1	85.3	0.2	66
106.4	107.5	100	5	Ogdc	Black featureless clay		37	106.4	107.5		85.3	86.5	0.4	33
											86.5	88.0	1.5	100
107.5	114.7	60	5x	Ogud	Dark grey/black angular limestone fragments in black clay	Sideritic top 2cm. and sideritic in places	38	107.5	109.8		88.0	90.7	2.7	100
							39	109.8	111.4		90.7	91.6	0.3	33
							5165640	111.4	114.7		91.6	92.5	0.7	63
114.7	121.0	75	5	Ogud	Dark grey/black rotted limestone with zones of black/dark grey clays - clay generally predominant		41	114.7	116.5		92.5	93.7	0.2	10
							42	116.5	118.1		93.7	95.5	0.3	16
							43	118.1	119.5		95.5	97.4	0	0
							44	119.5	121.0		97.4	98.5	1.1	100
											98.5	100.3	1.5	86
121.0	123.5	100	2	Ogud	Rotted limestone - possibly argillaceous - minor clay zones	Calcite vein subparallel to c.l.	45	121.0	122.4		100.3	101.5	1.2	100
							46	122.4	124.0		101.5	103.1	1.6	100

696101

C.R.A. EXPLORATION PTY. LIMITED
DRILL CORE LOG

SHEET No. 4

TENEMENT NAME SUNNY CORNER No. 5719

PLAN - MAP REFERENCE

CO-ORDINATES 365725E AZIMUTH..... DRILLERS ODTAS COMMENCED 3.5.95 DEPTH 345.7 HOLE No. D398
RL COLLAR 535767N INCLINATION 45° DRILL TYPE LX 38 COMPLETED 6.6.95 CASING LEFT..... DPO No(s).....

DEPTH		Core Rec %	RQ DATA	Graphic Log	CORE DESCRIPTION	SPECIAL FEATURES Weath, Alteration, Fracturing, Veining, Mineralization	Sample No.	From (M)	To (M)	Rec (M)	ASSAY VALUES (Analysed by.....)			
From (M)	To (M)										Fe (Fr.)	Rec (Fr.)	Rec (Fr.)	Rec (Fr.)
90.7	92.5	90	5x	Ogud	Dark grey dolomitised limestone - broken angular core with minor clay zones		27	90.0	89.5		58.2	61.1	1.7	74
							28	89.5	90.7		61.1	62.5	0.7	50
							29	90.7	92.5		62.5	63.7	1.0	83
							5465630	92.5	93.7		63.7	65.2	1.5	100
92.5	97.4	7	5x	Ogud	Broken, angular dark grey dolomite - major core loss - (probe clay on surfaces of core can react to acid).		31	93.7	95.5		65.2	67.0	0.9	50
											67.0	68.5	1.0	66
											68.5	70.0	1.5	100
											70.0	71.5	0.9	60
											71.5	72.5	0.3	30
											72.5	74.5	0.5	25
97.4	102.1	95	5	Ogud	Dark grey/black clay ore with dark grey dolomitic fragments. (angular)		32	97.4	98.5		74.5	75.3	0.6	75
							33	98.5	100.3		75.3	76.5	0.4	33
							34	100.3	102.1		76.5	77.5	0.2	20
											77.5	78.0	0.1	20
											78.0	81.6	0	0
102.1	106.4	100	5x	Ogud	Angular dolomite fragments with black clay zones. Brecciated appearance.	minor calcite veining	35	102.1	104.5		81.6	82.1	0.5	100
							36	104.5	106.4		82.1	83.5	0.9	64
											83.5	84.1	0	0
											84.1	85.3	0.8	66
106.4	107.5	100	5	Ogud	Black featureless clay		37	106.4	107.5		85.3	86.5	0.4	53
											86.5	88.0	1.5	100
107.5	114.7	60	5x	Ogud	Dark grey/black angular limestone fragments in black clay	Sideritic top 20cm. and sideritic in places	38	107.5	109.8		88.0	90.7	2.9	100
							39	109.8	111.4		90.7	91.6	0.8	33
							5465640	111.4	114.7		91.6	92.5	0.7	63
114.7	121.0	75	5	Ogud	Dark grey/black rotted limestone with zones of black/dark grey clays - clay generally predominant		41	114.7	116.5		92.5	93.7	0.8	10
							42	116.5	118.1		93.7	95.5	0.3	16
							43	118.1	119.5		95.5	97.4	0	0
							44	119.5	121.0		97.4	98.5	1.1	100
											98.5	100.3	1.5	86
121.0	123.5	100	2	Ogud	Rotted limestone - possibly argillaceous - minor clay zones	calcite vein subparallel to c/a.	45	121.0	122.4		100.3	101.5	1.2	100
							46	122.4	124.0		101.5	103.1	1.6	100

696102

C.R.A. EXPLORATION PTY. LIMITED
DRILL CORE LOG

SHEET No. 5
of 14

TENEMENT NAME SUNNYCORN No. 914
PLAN - MAP REFERENCE.....

CO-ORDINATES 365725E AZIMUTH..... DRILLERS DDTA COMMENCED 3.5.95 DEPTH 345.7 HOLE No. DS98
RL COLLAR 5357671N INCLINATION 45° DRILL TYPE LY38 COMPLETED 6.6.95 CASING LEFT..... DPO No(s).....

DEPTH		Core Rec. %	RC	Graphic Log	CORE DESCRIPTION	SPECIAL FEATURES Weath, Alteration, Fracturing, Veining, Mineralization	Sample No.	From (M)	To (M)	Rec (M)	ASSAY VALUES (Analysed by.....)					
From (M)	To (M)										Rec (g/t)	Rec (g/t)	Rec (g/t)	Rec (g/t)		
					localized bioclastic Bedding highlighted by argillite bands.	Bedding 85° to c/a. minor calcite stringer veins - locally orthoquartz some conjugate pair.	47	124	125.5			103.3	101.5	1.4	100	
							48	125.5	127.1			104.5	106.1	1.6	100	
							49	127.1	128.5			106.1	107.5	1.4	100	
												107.5	109.8	1.7	74	
												109.8	111.4	1.6	100	
128.5	131.2	100	4X	Ogul	Mixed rotted limestone and dark grey clays - limestone argillaceous in places.	Minor calcite veining	5465650	128.5	130.2			111.4	113.5	0.07	5	
							51	130.2	131.50			113.5	114.7	0.6	50	
							52	131.5	133.6			114.7	116.5	1.5	124	
							53	133.6	135.0			116.5	118.1	1.6	100	
134.2	132.34	100	1	Ogul	15cm coarse bioclastic band underlain by fine grained grey bioclastic calcarenite with 4cm bands of dark grey black argillaceous limestone.		54	135	137.6			118.1	119.5	1.0	70	
							55	137.6	141.9			119.5	121.0	1.0	66	
												121.0	122.4	1.0	70	
												122.4	124.0	1.6	100	
												124.0	125.5	1.5	100	
												125.5	127.1	1.6	100	
												127.1	128.5	1.4	100	
132.34	133.2	100	2X	Ogul	Dark grey rotted limestone with major dark grey clay zones.							128.5	130.1	1.6	100	
												130.1	131.5	1.4	100	
												131.5	133.1	1.6	100	
												133.1	134.5	1.4	100	
133.2	133.63	100	1	Ogul	Unrotted grey fine grained calcarenite with minor argillite zones; locally bioclastic.							134.5	136	0.45	90	
												136	136	0.3	30	
												136	137.5	0.2	13	
												137.5	138	0.2	78	
133.63	148.0	100	5X	Ogul	Dark grey clay with dark grey rotted limestone fragments (angular) fragments.	? minor calcite veining	5469101	147.9	150.6			138	149.2	150.6	0.8	56
												149.2	150.6	0.8	56	
												150.6	151.3	0.5	70	
												151.3	152.7	0.3	33	
												152.7	153.3	0.7	63	
												153.3	154.4	0.3	27	
												154.4	155.2	0.6	75	
148.0	149.0	100	1	Ogul	Grey fine grained calcarenite with argillaceous interstitial calcarenite							155.2	156.0	0.6	75	

Dropped core

696103

C.R.A. EXPLORATION PTY. LIMITED
DRILL CORE LOG

SHEET No.

TENEMENT NAME SUNNY CORNER No. 7074

PLAN - MAP REFERENCE

CO-ORDINATES 365725 E AZIMUTH DRILLERS DDTAS COMMENCED 3.5.95 DEPTH 345.7 HOLE No. DS9R

RL COLLAR 5357671 N INCLINATION 45 DRILL TYPE LY38 COMPLETED 6.6.95 CASING LEFT DPO No(s)

DEPTH		Core Rec %	RQ DATA	Graphic Log	CORE DESCRIPTION	SPECIAL FEATURES Weath, Alteration, Fracturing, Veining, Mineralization	Sample No.	From (M)	To (M)	Rec (M)	ASSAY VALUES (Analysed by.....)			
From (M)	To (M)										Fe (Iron)	P2O5 (P)	Al2O3 (Al)	SiO2 (Si)
189.5	190.3	100	1	Ogmu	Grey clay with broken coarse possibly laminated micritic int.						156	157.1	1.1	100
											157.1	158	0.7	77
											158	160	1.0	50
											160	161.5	0.8	55
190.3	193.5	88	3	Ogmu	Grey clay with grey calcarenite (med fine grained) micritic, laminated units	Bedding 80° E. c/A. cleavage 45° E. c/A	5465916	191.5	193.0		161.5	163.5	0.3	40
							17	193.0	195.0		163.5	164.3	0.5	37
											164.3	165.7	0.6	42
											165.7	167	0.7	55
193.5	193.6	100	5	Ogkz	clay gouge ? fault zone						167	168.3	1.3	100
											168.3	169.9	0.7	45
193.6	195.5	100	3x	Ogpl	Dark grey / grey micritic fine calcarenite, minor dark grey clays - broken core	Sub-parallel flat. c/A fabric					169.9	171.9	2.0	100
											171.9	172.8	0.9	100
											172.8	173.7	0.3	77
											173.7	174.4	0.5	70
											174.4	176.0	1.6	100
195.5	201.1	100	1	Ogpl	Grey med/fine grained calcarenite with disrupted bedding / pyroclastic brecciation, locally argillaceous, locally biotactic grey calcarenite, nodular looking.		18	195.0	196.6		176.0	178.1	2.1	100
											178.1	179.5	1.4	100
											179.5	182.5	3.0	100
											182.5	185.5	3.0	100
											185.5	188.5	3.0	100
											188.5	191.5	3.0	100
											191.5	194.8	2.4	95
201.1	204.3	100	1	Ogpl	lt grey micritic band (5cm) followed by grey biotactic fine grained calcarenite with minor interstitial argillaceous zones, possible bird's eyes.	cleavage 30° E. c/A.	19	201.0	202.7		194.8	196.6	2.5	100
											196.6	199.7	3.1	100
											199.7	202.7	3.0	100
											202.7	205.9	3.2	100
											205.9	208.3	3.1	100
											208.3	211.7	2.9	100
204.3	207.1	100	1	Og	Inter-laminated argillite and grey fine calcarenite, more argillaceous at base.	Bedding 70° E. c/A.	5465920	204.15	206.0		211.7	215.5	7.8	100
											215.5	218.3	2.8	100
											218.3	219.6	1.3	100

696102

C.R.A. EXPLORATION PTY. LIMITED
DRILL CORE LOG

SHEET NO.

TENEMENT NAME SUNNY CORNER No. 9/14

PLAN - MAP REFERENCE

CO-ORDINATES 365725 E AZIMUTH

DRILLERS DDTAS COMMENCED 3.5.95

DEPTH 345.7 HOLE No. DS98

RL COLLAR 5357671N INCLINATION 45°

DRILL TYPE LY38 COMPLETED 6.6.95

CASING LEFT DPO No(s)

DEPTH		Core Rec. %	RQ	Graphic Log	CORE DESCRIPTION	SPECIAL FEATURES Weath, Alteration, Fracturing, Veining, Mineralization	Sample No.	From (M)	To (M)	Rec (M)	ASSAY VALUES (Analysed by.....)				
From (M)	To (M)										REC (g/t)	REC (T/S)	REC (A1)	REC T ₆	
					Becoming more argillaceous downhole.							219.6	221.1	1.3	90
												221.1	222.8	1.7	100
												222.8	224.3	1.5	100
232	233.8	30	100	Ogfr	Calcite vein zone with clay gouges in dark grey/black altered argillaceous calcilitides, well sheared	Veins up to 3cm thick. 30+10" to c/A. Clay gouge 233.3cm 90" to c/A; calcite veins 6" + 35" to c/A. Some veins cleavage parallel, others cross cut cleavage (45° to c/A).	5465927	231	233			224.3	226.7	2.4	100
												226.7	231.6	4.9	100
												231.6	233.5	1.9	100
												233.5	236.6	3.1	100
												236.6	237.6	1.0	100
												237.6	239.5	1.9	100
												239.5	242.6	3.1	100
												242.6	245	2.4	100
233.1	246.0	100	100	Ogfr	Dark grey micritic-looking calcilitide; possibly fault altered; slight waxy brecciated appearance. Sheared looking; Broken core.	Irregular calcite vein, thin < 0.2cm. Massive pyrite replacement at 233cm - 5cm slug of pyrite. Fault/fracture foliate sub-parallel to c/A.	28	233	235			245	248.5	3.5	100
												248.5	249.6	1.1	100
												249.6	253.7	3.1	100
												253.7	255.8	3.1	100
												255.8	257.6	1.8	100
												257.6	258.8	1.2	100
												258.8	261.3	2.5	100
												261.3	264.4	3.1	100
												264.4	270.4	6.0	100
												270.4	273.5	3.1	100
												273.5	276.7	3.2	100
												276.7	279.3	3.1	100
246.0	249.65	100	1	Ogfr	Intensely varied (calcite) grey/light grey? fault altered limestone	? weak pervasive dolomitisation. Irregular stringer vein system > 3cm veins @ 247.5 30° E c/A @ 247.8 30° E c/A @ 249.2 45° E c/A Breccia vein @ 249.6 - 249.65 75° E c/A.	34	247.5	249.7			249.7	251.7		

696107

C.R.A. EXPLORATION PTY. LIMITED
DRILL CORE LOG

SHEET No.

TENEMENT NAME SUNNY CORNER No. 12 of 11

CO-ORDINATES 365725 E AZIMUTH DRILLERS DD TAS COMMENCED 3.5.95 DEPTH 345.7 HOLE No. D398
RL COLLAR 535767 N INCLINATION 45° DRILL TYPE LY 38 COMPLETED 6.6.95 CASING LEFT DPO No(s)

PLAN - MAP REFERENCE

DEPTH		Core Rec. %	RQ DATA	Graphic Log	CORE DESCRIPTION	SPECIAL FEATURES Weath, Alteration, Fracturing, Veining, Mineralization	Sample No.	From (M)	To (M)	Rec (M)	ASSAY VALUES (Analysed by			
From (M)	To (M)										Fe (%)	Fe (ppm)	Fe (ppm)	Fe (ppm)
						Unusual textures @ 291.6m.					277.8	283	3.0	94
						localised zones of calcite					283	284.9	1.6	84
						stringer veining + more					284.9	286.5	1.6	100
						major veining 35-45° E c/a					286.5	289	2.5	100
											289	292	3.0	100
											292	294	2.0	100
297	304.8	100	1	Agal	Lt grey/grey micritic fine grained calcarenite with significant red grained dark grey argillaceous calcarenite becoming much more micritic and less argillaceous downwards.	cleavage 45° E c/a					294	297.1	3.1	100
											297.1	300.2	3.1	100
											300.2	303.3	3.1	100
							2165940	300.2	301.8		303.3	306.4	3.1	100
											306.4	309.5	3.1	100
											309.5	310.1	0.6	100
											310.1	310.8	0	0
											310.8	312.2	1.2	86
302.8	307.5	100	1	Agal	Grey fine grained calcarenite with irregularly interbedded with dark grey argillaceous calcarenite/calcarenite grey calcarenites locally bioclastic/micritic.	Minor amounts of calcite stringers 90° E c/a, 70° E c/a	41	303.8	310.1		312.2	313	0.7	88
											313	314.5	1.5	100
											314.5	316	1.5	100
											316	317.1	1.1	100
											317.1	319	1.3	68
											319	319.7	0.45	64
											319.7	321.1	1.1	79
307.5	30.1	100	3	Agal	Well bedded/laminated dk grey argillite and fine grained grey calcarenite - slightly rathol	Bedding 60° E c/a. cleavage parallel to bedding					321.1	322.4	1.0	77
											322.4	323.5	0.9	82
											323.5	325.2	1.6	70
											325.2	327	0.68	50
											327	328.4	0.9	64
310.1	310.8	0	0	Agal	Cavity						328.4	329.4		
											329.4	330.4	0.6	60
310.8	311.4	75	4X	Agal	Dk grey clay and limestone calcite breccia veins	Locally massive ophiolite - hornblende - with chlorite banding	42	310.8	311.72		330.4	330.7	0.05	10
											330.7	332.5	1.6	100
											332.5	333.9	1.6	100

696110

C.R.A. EXPLORATION PTY. LIMITED
DRILL CORE LOG

SHEET No. 14

TENEMENT NAME Sunny Corner No. 14

PLAN - MAP REFERENCE

CO-ORDINATES 365725E AZIMUTH

DRILLERS DD TFS

COMMENCED 3.5.95

DEPTH 345.7

HOLE No. D318

RL COLLAR 5357671N INCLINATION 45°

DRILL TYPE LY 38

COMPLETED 6.6.95

CASING LEFT

DPO No(s)

DEPTH		Core Flec. %	RQ DATA	Graphic Log	CORE DESCRIPTION	SPECIAL FEATURES Weather, Alteration, Fracturing, Veining, Mineralization	Sample No.	From (M)	To (M)	Rec (M)	ASSAY VALUES (Analysed by)				
From (M)	To (M)										Rec (ppm)	Rec (%)	Rec (%)	Rec (%)	
315.4	323.7	72	4X	Og	Partially rotted calcarenite with argillaceous material; occ. dk grey clay zones locally laminated units	Minor - calcite veining Bedding 60° to c/A ? partial dolomitisation ? small sideritic zones	5465947	316	317.1			335.1	335.7	1.6	100
							48	317.1	319.0			335.5	337	1.5	100
							49	319.0	321.1			337	337.5	1.3	86
							50	321.1	323.5			338.5	337.7	1.2	100
												337.7	341.2	1.5	100
												341.2	343	0.45	25
323.7	328.75	60	5x	Og/z	Faulted zone of brecciated limestones and clay gouges	Minor irregular calcite veining	51	323.5	325.8			343	344.5	1.5	100
							52	325.8	327.0			344.5	345.7	0.75	50
							53	327.0	329.4						
328.75	330.7	50	4F	Og/z	Well cleaved fault altered fine grained ? argillaceous calcarenite - rotted core.	cleavage (? bedding parallel) 60° to c/A.	54	329.4	330.9						
330.9	341.5	76	2	Og/z	Grey med. grained calcarenite with small-scale (cm) micrite nodules and v. minor argillaceous calcarenite interstitial fill + wisps.	Fabric / bedding 60° to c/A.	55	330.9	333.0						
							56	332.7	341.2						
341.5	343.3	53	5x	Og/z	Fault zone / cavity - major core loss + badly broken core. Dark grey clays		57	341.2	343.3						
343.3	344.3	100	2	Og/z	Micritic fine grained calcarenite with ore boudins.		58	343.3	345.7						
344.3	345.7	70	3x	Og/z	Mixed zone of clays and micritic calcarenite	Fault gouge 20° to c/A. Irregular calcite veining	5465958								
END OF HOLE 345.7m.															