

CRA EXPLORATION PTY. LIMITED
 DRILL-HOLE SUMMARY LOG

342042

HOLE NAME: DD95ZM188 AMG EAST 364473 NORTH S351933
 PROSPECT: MYRTLE GRID EAST 60558 NORTH S0130
 EL: ZEEHAN 1 EL28/88 RL DEPTH 201.1m

DATE DRILLED: 5/6/95
 LOGGED BY: S.J. TEAR
 DRILLING CO.: DD.TAS.LTD.
 DRILL TYPE: DIAMOND
 DRILL RIG: U250
 LOC DRILL CORE: ZEEHAN

SURVEYS:

DEPTH	AZIM (AMG)	DIP	DEPTH	AZIM (AMG)	DIP
0	93°	60°			
100m	93°	61°			
150m	93°	61°			
200m	70°	61.5°			

OBJECTIVES OF HOLE:

Diamond Drill Test of Lower Sandstone/Limestone Contact

LITHOLOGICAL SUMMARY:

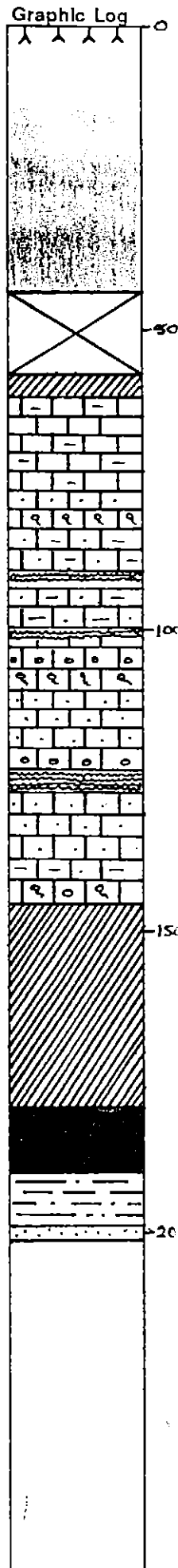
FROM	TO	FORM CODE	COMMENTS
0	43.7	Qph	Overburden; inc. sandstone gravels and dark grey clays - surficial weathering of limestone.
43.7	46.7	Ogdl	Dolomitised calcarenite with red shale unit and ?conglomerate/fault breccia at top of dolomite
46.7	57.5	-	Caully
57.5	61.3	Ogfs	Faulted unit with red shale
61.3	145.4	Ogul	Undifferentiated Limestones - with laminated micrite top. - Grey med/fine grained calcarenites/micrites. - with occ faulted zones and laminated
145.4	178.9	Ogfs	Faulted micrite units
178.9	179.1	Ogsd	Sidelite Unit.
179.1	189.8	Ogfs/Ogdc	Faulted zone with dark grey clays (Ogdc)
189.8	198.65	Ogst	Silty Transition Unit.
198.65	201.1	Om	Moina Quartzite

MINERALISATION SUMMARY:

FROM	TO	COMMENTS
0	43.7	Elevated zinc values with the weathered clays up to 503ppm
192.4	194.5	556 ppm Zinc in the Silty Transition Unit.

CONCLUSIONS:

Bedding @ top of hole is 75° to c/a.
 The dark clays in the base of the hole appear to represent a fault structure; weathering of the limestones has penetrated downhole depths of 180m.
 Movement on fault is unknown.



C.R.A. EXPLORATION PTY. LIMITED
DRILL CORE LOG

SHEET No. 2
No. 211

TENEMENT NAME MYRTLE
PLAN - MAP REFERENCE

364473E

CO-ORDINATES 5351933 N AZIMUTH DRILLERS D.T.A.S. COMMENCED 5.6.95 DEPTH 201.1 m HOLE No. ZM188

RL COLLAR INCLINATION 60° DRILL TYPE 4.250 COMPLETED CASING LEFT DPO No(s)

DEPTH		Core Rec. %	RA DATA	Graphic Log	CORE DESCRIPTION	SPECIAL FEATURES Weath, Alteration, Fracturing, Veining, Mineralization	Sample No.	From (M)	To (M)	Rec (M)	ASSAY VALUES (Analysed by.....)				
From (M)	To (M)										REC (mm)	REC (%)	REC (m)	REC (%)	
42.4	43.7	50	5	Qna	Dark grey black clay Major zone of core loss							57.5	58.1	0.5	84
												58.1	59.5	0.5	39
												59.5	60.7	0.8	67
43.7	46.7	5	5	Ogll	Dark grey ? laminated calcareous - nodal + weakly calcareous.							60.7	61.7	0.9	90
												61.7	63.0	0.9	70
												63.0	66.1	2.0	63
												66.1	67.1	0.3	10
46.7	57.5	0	-	Oad1	CAVITY.							67.1	72.1	2.0	67
												72.1	75.1	2.0	67
57.5	58.1	84	5	Ogflz	Dark grey/black clay with nodal dk grey calcareous pieces	calcite veining matrix scale.	5465818	57.5	59.5			75.1	78.1	2.7	90
												78.1	81.1	1.0	33
												81.1	82.6	1.0	33
												82.6	84.1	0.3	20
58.1	59.5	39	5X	Ogflz	Brecciated calcarenite with minor clay zones.	irregular calcite veining						84.1	87.1	3.0	100
												87.1	89.0	1.9	100
												89.0	91.2	2.2	100
59.5	60.7	70	4X	Ogflz	Light grey fine grained calcareous micritic in places; localized hematite alteration.	calcite veining with hematite alteration	411	59.5	60.7			91.2	93.1	1.6	89
												93.1	94.8	1.7	100
												94.8	96.6	1.8	100
												96.6	99.1	2.5	100
												99.1	102.1	3.0	100
60.7	61.3	90	3X	Ogflz	Red hematitic shale - calcareous; red alteration associated with calcite veining.		5465900	60.7	61.3			102.1	105.1	3.0	100
												105.1	109.1	3.0	100
												109.1	111.1	3.0	100
												111.1	114.1	3.0	100
												114.1	117.1	3.0	100
61.3	62.7	90	3X	Ogflz	Laminated micrite unit with Red shale zones - Surface burrowing with emergence.	Bedding 75° to c/A.	5466001	61.3	62.7			117.1	119.4	1.5	100
												119.4	120.6	0.4	33
												120.6	123.1	1.5	100
												123.1	124.4	0.9	69
												124.4	125.6	0.3	25

342044

C.R.A. EXPLORATION PTY. LIMITED
DRILL CORE LOG

SHEET No. 3
No. 211

364473E

TENEMENT NAME MYRTLE

CO-ORDINATES 5351933 AZIMUTH..... DRILLERS DDTAS COMMENCED 5.6.95 DEPTH 201.1m HOLE No. ZM188
RL COLLAR..... INCLINATION 60° DRILL TYPE U250 COMPLETED..... CASING LEFT..... DPO No(s).....

DEPTH		Core Rec. %	RQ DATA	Graphic Log	CORE DESCRIPTION	SPECIAL FEATURES Weath, Alteration, Fracturing, Veining, Mineralization	Sample No.	From (M)	To (M)	Rec (M)	ASSAY VALUES (Analysed by.....)											
From (M)	To (M)																					
62.7	70.8	45	2	Qgsl	Mixed light grey micrite with calcite veining and limestone conglomerate units; clots of veined micrite + dark grey black argillite conglomerate sub rounded clots. Coarsening upwards in congl. units and within units. micrite locally fractured; dk grey clay zone from 67.1m for ~20cm. followed by calcite breccia vein for 3cm.	Minor pyrite blks with vein (? sphalerite)	5466002	62.7	67.2													
							3	67.2	66.1													
							4	66.1	69.1													
							5	69.1	70.8													
70.8	82.6	65	3V	Qgsl	light grey micrite with stylolites and calcite veining - locally brecciated mud facies; fractured block at base.	Note: localized zones of micro- quartz veining possible dolomite in calcite vns shears; foliation sub parallel to dip; veining (calcite) sub parallel to CIA and 45° E. / A.		72.1	75.1													
							7	75.1	78.1													
							8	81.1	82.6													
82.6	84.65	20	5x	Qgsl	porous micritic - possible cavity; some argillaceous calcarenite + light grey clay/sand matrix																	
84.65	85.55	100	3	Qgsl	grey med fine grained calcarenite intermixed with dk grey argillaceous calcarenite	Minor stylolite brecciation and some hematitic alteration at 84.2m - breccia related																

342045

C.R.A. EXPLORATION PTY. LIMITED
DRILL CORE LOG

SHEET No. 8
No. of 11

TENEMENT NAME MYRTLE
PLAN - MAP REFERENCE.....

364473 E
CO-ORDINATES 5351933 N AZIMUTH..... DRILLERS DD TAS COMMENCED 5.6.0 DEPTH 201.1 m HOLE No. 2M 188
RL COLLAR..... INCLINATION 60° DRILL TYPE 4250 COMPLETED..... CASING LEFT..... DPO No(s).....

DEPTH		Core Rec	RQ	Graphic Log	CORE DESCRIPTION	SPECIAL FEATURES Weath, Alteration, Fracturing, Veining, Mineralization	Sample No.	From (M)	To (M)	Rec (M)	ASSAY VALUES (Analysed by.....)			
From (M)	To (M)										GR	IR	TK	MC
143.0	145.4	75	3f	Ogfl	Grey med fine grained calcarenite with interstitial argillite zones						125.4	127.1	1.0	67
											127.1	128.1	1.0	100
											128.1	130.6	2.2	90
145.4	146.7	75	3	Ogfl	Weakly laminated rotted lt grey micritic unit	Bedding 70° to c/a					130.6	133.4	2.8	100
											133.4	135.0	0.15	25
											135.0	136.0	1.0	100
146.7	147.8	63	5x	Ogfl	Clay gouge zone with red shale fragments and altered argillaceous calcarenite	Clay zone 30° to c/a minor pyrite blebs					136.0	137.9	1.6	85
											137.9	139.4	1.5	100
											139.4	141.1	0.8	50
											141.1	142.6	1.5	100
147.8	149.3	33	2	Ogfl	Biotitic grey calcarenite unit - fault altered	Heavily calcite veined.					142.6	144	1.1	77
											144	145.4	1.2	84
											145.4	146.9	1.3	86
149.3	151.6	25	5x	Ogfl	Red shale unit - heavily brecciated with a zone of micritic calcarenite with argillite		54660 22	149.3	151.6		146.9	147.8	0.5	55
											147.8	149.3	0.5	33
											149.3	150.6	0.6	46
											150.6	151.6	0.15	15
											151.6	153.1	0.5	33
151.6	156.2	52	3x	Ogfl	Faulted zone - abundant calcite veining and occ clay gouge in brecciated calcarenite.		23	151.6	154.6		153.1	154.6	1.0	67
							24	154.6	156.2		154.6	156.1	1.5	100
											156.1	157.6	0.6	40
											157.6	159.1	0.65	44
											159.1	160.6	0.7	46
156.2	171.0	40	4x	Ogfl	lt grey micritic limestone; locally well rotted; with clay zones and laminated zones	lt. localised zones of pyrite very fine Bedding 70° to c/a.	25	156.2	157.6		160.6	161.6	0.5	50
							26	157.6	160.6		161.6	163.6	0.9	45
							27	163.6	165.1		163.6	165.1	0.9	60
							28	165.1	166.6		165.1	166.6	0.4	26
							29	166.6	168.1		166.6	168.1	0.9	60
171.0	174.1	30	5x	Ogfl	Dark grey fault altered and rotted argillaceous calcarenite with some argillite and interstitial fill.		30	168.1	169.6		168.1	169.6	0.15	10
							31	169.6	170.9		169.6	171.1	0.9	60
							32	170.9	172.6		171.1	172.6	0.3	20

342050

C.R.A. EXPLORATION PTY. LIMITED
DRILL CORE LOG

SHEET No. 9
No. of 11

TENEMENT NAME Myrtle
PLAN - MAP REFERENCE.....

CO-ORDINATES 364473E S351933N AZIMUTH..... DRILLERS DDTAS COMMENCED 56.75 DEPTH 201.1m HOLE No. Zm 188
RL COLLAR..... INCLINATION 60° DRILL TYPE U250 COMPLETED..... CASING LEFT..... DPO No(s).....

DEPTH		Core Rec. %	RA DATA	Graphical Log	CORE DESCRIPTION	SPECIAL FEATURES Weath, Alteration, Fracturing, Veining, Mineralization	Sample No.	From (M)	To (M)	Rec (M)	ASSAY VALUES (Analysed by.....)				
From (M)	To (M)										REC (mm)	REC (T)	REC (M)	REC (%)	
174.1	178.9	40	Sx	Og/z	Fault zone - clay gouge with altered calcareous fragments, argillite fragments and red shale fragments.	Possible fabric 75° to c/a.	5466033	172.6	174.1			172.6	174.1	0.6	40
								34	174.1	175.6		174.1	175.6	0.6	40
								35	175.6	177.1		175.6	177.1	0.6	40
								36	177.1	178.9		177.1	178.6	0.3	20
178.9	179.1	100	3	Og/sd	Siderite zone with brecciated ?limestone fragments; breccia fragments re-broken and held by clays.	Pyrite matrix to breccia	37	178.9	179.1			178.6	180.1	1.0	67
												180.1	181.6	1.5	100
												181.6	183.1	1.5	100
												183.1	184.6	1.5	100
												184.6	186.1	1.5	100
179.1	180.1	40	Sx	Og/z	light grey calcareous clay ?heavily rotted ?micrite.		38	179.1	180.1			186.1	177.6	0.75	50
												187.6	178.5	0.3	33
												188.5	190.1	1.1	69
												190.1	191.2	1.0	90
180.1	180.65	100	Sx	Og/z	Fault zone - clay gouge with brecciated fragments including red shale; non calcareous.	Fabric 75° to c/a.	39	180.1	181.6			191.2	193.1	1.2	60
												193.1	194.5	0.2	14
												194.5	195.7	1.2	100
												195.7	196.6	0.7	77
180.65	182.3	100	Sx	Og/z	Fault zone - clay gouge with smaller fragments, inc vein quartz	Diverminated pyrite throughout latter half of core ?10%. Fabric 70° to c/a.	40	181.4	182.3			196.6	198.3	1.7	100
												198.3	199.2	0.9	100
												199.2	199.6	0.3	75
												199.6	201.1	1.5	100
182.43	182.9	100	Sx	Og/z	Clay zone with sub rounded light grey/brown clots - fault gouge or weathered conglomerate bands within dark grey clay	Coarser grained dissemblable of pyrite associated with conglom. bands.	41	182.3	182.9						
182.9	183.9	100	Sx	Og/dc	Dark grey/black rotted sandstone and siltstone (+/- shales) - now a dark grey clay		42	182.9	183.9						

342051

