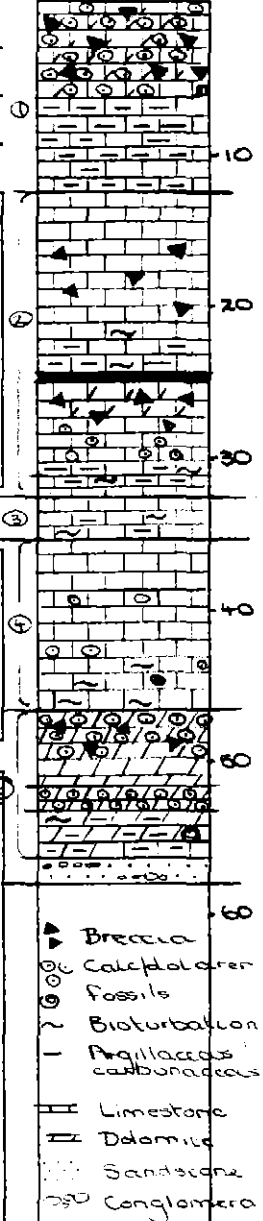


HOLE NAME: DD96SW5 AMG EAST 275728mE NORTH 5324094mN  
 PROSPECT Swift Creek GRID EAST 5250 NORTH 10800  
 L: Swift Creek EL64/94 RL DEPTH 58m

Graphic Log



DATE DRILLED: 16/4/96-18/4/96  
 LOGGED BY: Sandy Menpes  
 MILLING CO.: All Terrain Expl  
 DRILL TYPE: Diamond BOTK  
 DRILL RIG: "Grapher"  
 LOC DRILL CORE: Zeehan Shed

SURVEYS:

DEPTH	AZIM (AMG)	DIP	DEPTH	AZIM (AMG)	DIP
0	069°	50°			
20m	066°	48°			
58m	068°	46 1/2°			

OBJECTIVES OF HOLE:  
 To test Gordon Group below location of wacker samples that returned 0.37% Pb, sphalerite nugget, and 0.15% Pb

LITHOLOGICAL SUMMARY:

FROM	TO	FORM CODE	COMMENTS
0	0.2	C	Soil and gravels
0.2	51.7	Og1	5 x PAC's (punctuated aggradational cycles)
51.7	53.2	Og00	Coarse grained dolarenite, partially silicified
53.2	56.3		Transition unit. Very fine grained dolarenite, light grey dolomitic, carbonaceous limestone and micrite.
56.3	58.0		Very fine grained quartz sandstone with argillaceous matrix. Includes poorly sorted gravelly conglomerate horizons

\* PACs should be thinner. Several truncated PACs probably missed by logger

MINERALISATION SUMMARY:

FROM	TO	COMMENTS
16.2	16.4	0.2m @ 0.78% Pb in light grey micrite. Same unit as returned 0.37% Pb in wacker sample, and 1.5m at 1.2% from 12.2m in DD96SW4

CONCLUSIONS:

- Mineralisation intersected in wacker hole (0.37% Pb) at 5270 E is very narrow and low grade.
- Mineralisation intersected in wacker holes at 5275 E and 5295 E has very limited extent (no mineralisation intersected downdip of anomalous samples)

CRA EXPLORATION PTY LIMITED  
 DRILL CORE LOG

Local  
 5250E 10800N  
 CO-ORDINATES 375728 m E AZIMUTH 057° Mag DRILLERS P.T.E. COMMENCED 16/1/96 DEPTH 58 m HOLE No. DD9LSWS  
 RL COLLAR 5324094 m N INCLINATION 50° DRILL TYPE Casing COMPLETED 18/1/96 CASING LEFT 15 mm PVC 1.05 m DPO No(s) 81260

Depth		Core Rec %	Rock Quality	Form Code	CORE DESCRIPTION	SPECIAL FEATURES Weath, Alteration, Fracturing, Veining, Mineralization	Sample No.	Dfrom (m)	Dto (m)	MagSus		Recovery									
From (m)	To (m)									Depth	Value	From (M)	To (M)	Cut (M)	Rec (M)	Rec %					
0	0.2			C	<u>Cover</u>																
					Soil and gravels																
0.2	51.7			ng	<u>Shallowing upward cycles</u>	("PAC's")	1142064	1.5	4.5	1.5	0	4.5	6.0	1.5	1.1				73		
					0 0.2 - 12.5m	Trace very fine pyrite on fracture faces	1142065	9.0	12.0	2.5	0	9.0	9.0	1.5	1.2					80	
				3-4 BF	Predominant dark grey argillaceous, variably carbonaceous, very fine gr calcarenite below 7m					3.0	0	9.0	10.5	1.5	0.9					63	
					Overlain by predominantly fine to med. gr. grained, variably brecciated and dolomitised equigranular calcarenite					3.5	0	10.5	12.0	1.5	1.3					87	
										4.0	0	12.0	13.5	1.5	1.3					90	
										4.5	0	13.5	15.0	1.5	1.4					93	
										5.0	0	15.0	16.5	1.5	1.1					73	
										5.5	0	16.5	18.0	1.5	1.4					93	
										6.0	0	18.0	19.5	1.5	1.5					100	
										6.5	2	19.5	21.0	1.5	1.5					100	
										7.0	0	21.0	22.5	1.5	1.5					100	
				2-3 F	12.5 - 24.4m					7.5	0	22.5	24.0	1.5	1.5					100	
					Dark grey, very fine gr. med. calcarenite, generally to coarse sandstone with scattered argillaceous, carbonaceous laminae. Variably brecciated																
					Overlain by recessed, grey limestone facies. Originally fine grained calcarenite	Minor very fine pyrite on fracture faces															
					Overlain in turn by predominantly light grey micrite. Variably brecciated																
					Minor bedding. Perforation near top of wall	16.2 - 16.4m with 5-10% sulphide replacement & Fe Sphalerite and galena?	066	16.2	16.4	13.5	0	16.5	17.0	1.5	1.4						93
										14.0	0	17.0	18.5	1.5	1.5						100
							067	18.0	19.5	14.5	0	18.5	19.0	1.5	1.5						100
										15.0	0	19.0	20.5	1.5	1.5						100
										15.5	0	20.5	22.0	1.5	1.5						97

CRA EXPLORATION PTY LIMITED  
 DRILL CORE LOG

CO-ORDINATES 375728mE AZIMUTH..... DRILLERS..... COMMENCED..... DEPTH..... HOLE No.....  
 RL COLLAR 5324094mN INCLINATION..... DRILL TYPE..... COMPLETED..... CASING LEFT..... DPO No(s).....

Depth		Core Rec %	Rock Quality	Form Code	CORE DESCRIPTION	SPECIAL FEATURES Weath, Alteration, Fracturing, Veining, Mineralization	Sample No.	Dfrom (m)	Dto (m)	MagSus		Recovery				
From (m)	To (m)									Depth	Value	From (M)	To (M)	Cut (M)	Rec (M)	Rec %
					24.4 - 25.0m					16.0	0	4.5	5.5	1.5	1.5	83
					0.6m cavity					16.5	0	5.5	5.0	1.5	1.5	97
										17.0	0	5.0	5.2	1.5	1.5	100
				1-2BF	25.0 - 31.1m		417068	25.5	27.0	17.5	0	5.2	5.4	1.5	1.5	100
					Banded grey and dark grey, variably argillaceous & fine grained calcareous grading to fine sandstone overlain by tidal channel sequences. ?Dolomite, ?bioclastic gravels grad. to light grey micrite	Minor pyrite in fractures	069	27.0	28.5	18.0	0	5.4	5.5	1.5	1.5	100
							070	30.0	33.0	18.5	0	5.5	5.7	1.5	1.4	93
										19.0	0	5.7	5.8	1.0	0.9	90
										19.5	0					
										20.0	0					
										20.5	0					
										21.0	0					
										21.5	0					
										22.0	0					
										22.5	0					
										23.0	0					
										23.5	0					
										24.0	0					
										24.5	0					
										25.0	0					
				1-2B	31.1 - 32.7m					25.5	0					
										26.0	0					
										26.5	4					
										27.0	0					
										27.5	2					
										28.0	0					
										28.5	7					
										29.0	0					
										29.5	0					
										30.0	0					
										30.5	0					
										31.0	0					
										31.5	0					

CRA EXPLORATION PTY LIMITED  
 DRILL CORE LOG

CO-ORDINATES 375 228 60 E AZIMUTH DRILLERS COMMENCED DEPTH HOLE No.  
 RL COLLAR 532 094 00 MIN INCLINATION DRILL TYPE COMPLETED CASING LEFT DPO No(s)

Depth		Core		Form Code	CORE DESCRIPTION	SPECIAL FEATURES Weath, Alteration, Fracturing, Veining, Mineralization	Sample No.	D from (m)	D to (m)	MagSus		Recovery							
From (m)	To (m)	Rec %	Rock Quality							Depth	Value	From (M)	To (M)	Cut (M)	Rec (M)	Rec %			
			2-3B		③ 32.7-35.3m	Minor pyrite				32.0	0								
					Variable bioturbated,					32.5	1								
					very fine grained calcarenite					33.0	0								
					with darker grey argillaceous					33.5	0								
					beds					34.0	0								
					Grades upward to more					34.5	0								
					massive, light grey					35.0	0								
					very fine grained calcarenite					35.5	0								
					with occasional argillaceous					36.0	0								
					laminae. Not bioturbated					36.5	0								
										37.0	0								
			1-2BF		④ 35.3-46.5		4142071	38.0	40.5	37.5	0								
					Banded, variably bioturbated,	Dolomite	072	40.5	43.4	38.0	0								
					grey and dark grey, very		073	42.4	45.0	38.5	0								
					fine grained calcarenite		074	43.0	46.5	39.0	0								
					Occasional fossiliferous					39.5	0								
					and bioclastic lenses					40.0	0								
					Fine beds of coarse					40.5	2								
					grained equigranular calcarenite (? dolomitised)					41.0	2								
					Overlain by more massive,					41.5	0								
					light grey, fine grained					42.0	0								
					calcarenite					42.5	0								
					Overlain in turn by					43.0	0								
					light grey, fine grained					43.5	0								
					calcarenite and massive					44.0	0								
					with dark grey argillaceous					44.5	0								
					laminae					45.0	0								
										45.5	0								
										46.0	2								
										46.5	4								
										47.0	8								
										47.5	7								

**CRA EXPLORATION PTY LIMITED**  
**DRILL CORE LOG**

CO-ORDINATES 375125mE AZIMUTH..... DRILLERS..... COMMENCED..... DEPTH..... HOLE No.....  
 RL COLLAR 532494mN INCLINATION..... DRILL TYPE..... COMPLETED..... CASING LEFT..... DPO No(s).....

Depth		Core		Form Code	CORE DESCRIPTION	SPECIAL FEATURES Weath, Alteration, Fracturing, Veining, Mineralization	Sample No.	Dfrom (m)	Dto (m)	MagSus		Recovery						
From (m)	To (m)	Rec %	Rock Quality							Depth	Value	From (M)	To (M)	Cut (M)	Rec (M)	Rec %		
					⑤ 46.9-51.7m					46.0	2							
					Fairly massive, dark grey, very fine grained dolarenite overlain by light grey, medium to coarse grained, recrystallised, equigranular dolarenite. Brecciated in parts.	Partially silicified in parts	4152075	46.5	48.7	46.5	3							
						Illite pyrite replacement	076	48.7	49.7	49.0	3							
							077	49.7	51.7	49.5	6							
										50.0	5							
										50.5	0							
										51.0	2							
										51.5	2							
51.7	53.2		2F	Og	<u>Coarse Grained Dolarenite</u>		078	51.7	53.25	52.0	15							
					Equigranular, partially silicified					52.5	18							
										53.0	11							
										53.5	7							
										54.0	5							
53.2	56.3		2BF	Og	<u>Transition Unit</u>		079	53.25	54.15	54.5	5							
					Fine to very fine grained dolarenite with disrupted carbonaceous argillaceous laminae. Variably bioturbated		080	54.15	55.6	55.0	6							
					Fossiliferous (with brachiopod shells) bed at base of unit		081	55.6	57.0	55.5	10							
										56.0	6							
										56.5	5							
										57.0	10							
										57.5	12							
										58.0	2							
					Overlying laminated beds of dark grey, v to grained dolarenite, light grey dolarenite, carbonaceous limestone, and micrite													
					Possibly significant clastic component													

304148

CRA EXPLORATION PTY LIMITED  
 DRILL CORE LOG

CO-ORDINATES 275128mE AZIMUTH..... DRILLERS..... COMMENCED..... DEPTH..... HOLE No.....  
 RL COLLAR 5375095mN INCLINATION..... DRILL TYPE..... COMPLETED..... CASING LEFT..... DPO No(s).....

Depth		Core Rec %	Rock Quality	Form Code	CORE DESCRIPTION	SPECIAL FEATURES Weath, Alteration, Fracturing, Veining, Mineralization	Sample No.	Dfrom (m)	Dto (m)	MagSus		Recovery							
From (m)	To (m)									Depth	Value	From (M)	To (M)	Cut (M)	Rec (M)	Rec %			
54.3	58.0		ZDF		<u>Clastic Unit</u>		442082	57.0	58.0										
					Very fine grained quartz sandstone with abundant dark grey and olive grey argillaceous matrix. Includes poorly sorted, gravelly conglomerate horizons. Subangular quartz and siltstone clasts.	Minor pyrite													
						<u>Surveys</u>													
						Depth Azim Incl													
						20m 054° mag 48°													
						58m 056° mag 46.5°													