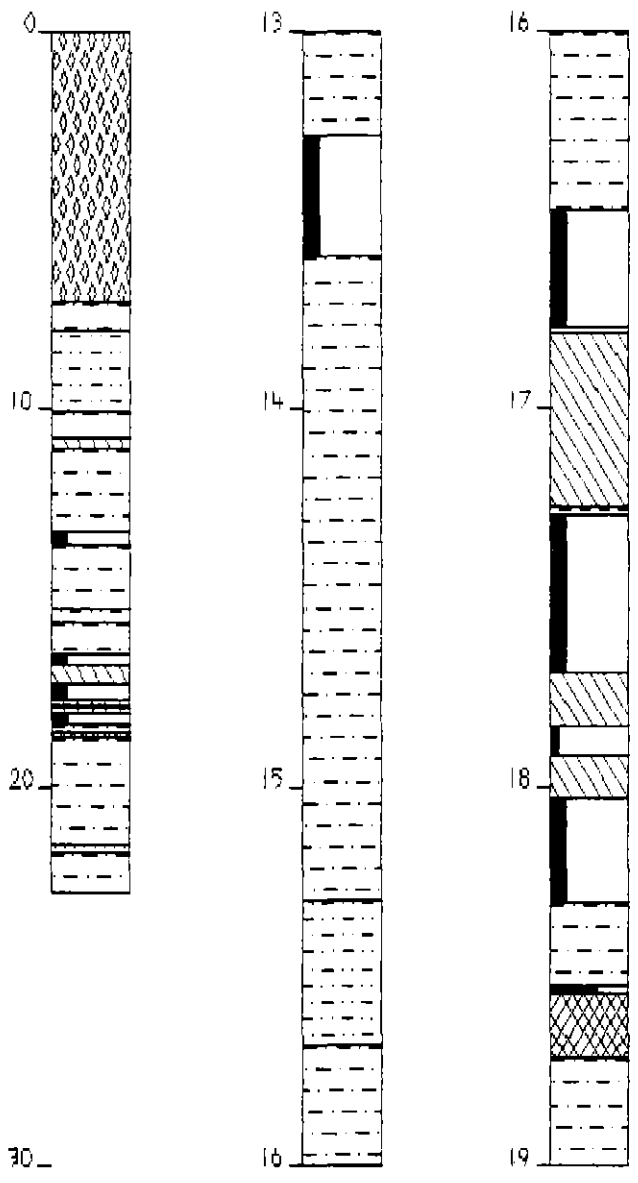


CORNWALL COAL HAREFIELD "F"

Location:	Harefield	Logged by:	J. Bryan
AMG Co-ordinates:	595963.9E	Drilled by:	Stacpoole Drilling
	5391113.4N		
Collar R.L.:	293.12	Commenced:	Dec 1998
Total Depth:	22.80m	Completed:	Dec 1998

	Estimated Thickness (m)	Estimated Depth to Base of Stratum (m)	Remarks
SCREE (NON CORE)	7.20	7.20	
MUDSTONE, grey./green, weathered at top	0.78	7.98	HQ Core
SILTSTONE, grey, hard, moderately strong	2.12	10.10	
MUDSTONE, grey/green, weak	0.70	10.80	
MUDSTONE, dark grey, carbonaceous	0.25	11.05	
MUDSTONE, mid grey, micaceous, becoming sandy towards base, relatively weak	2.23	13.28	
COAL, dull minor bright, core broken	0.32	13.60	Core loss 0.16m
MUDSTONE, grey to grey/green, relatively weak	1.70	15.30	
SILTSTONE, grey, hard, massive	0.38	15.68	
MUDSTONE, grey to grey green, weak	0.80	16.48	
COAL, dull minor bright	0.31	16.79)
CLAYSTONE, grey, hard, ?tuffaceous	0.01	16.80) 16.48-18.31
MUDSTONE, black coaly and coal stony	0.46	17.26) DE SEAM
CLAYSTONE, mid grey, hard	0.02	17.28) 1.83m
COAL, dull minor bright	0.42	17.70)
MUDSTONE, black, carbonaceous	0.14	17.84)
COAL, dull	0.08	17.92)
MUDSTONE, brown to black, coaly	0.11	18.03)
COAL, dull minor bright, with minor claystone bands	0.28	18.31)
MUDSTONE, grey, slickensided, weak	0.22	18.53	
COAL, bright and dull	0.02	18.55	
CORE LOSS (? in mudstone or coal unit above)	0.17	18.72	
MUDSTONE, green/grey, weak	2.78	21.50	
SANDSTONE, grey, lithic	0.22	21.72	
MUDSTONE, grey, sandy at top, laminated, relatively weak	1.08	22.80	T.D. 22.80m



<ul style="list-style-type: none"> CORE LOSS COAL Dull and b COAL Dull CLAYSTONE COAL Dull minor CARBONACEOUS MU SILTSTONE MUDSTONE GRAVEL SANDSTONE 	CORNWALL COAL HAREFIELD
	CORNWALL COAL "F"
	DATE DRILLED: DEC 98
	GEOLOGY BY: MBCS
	LOGGED BY: JH-BRYAN
PROLOG	