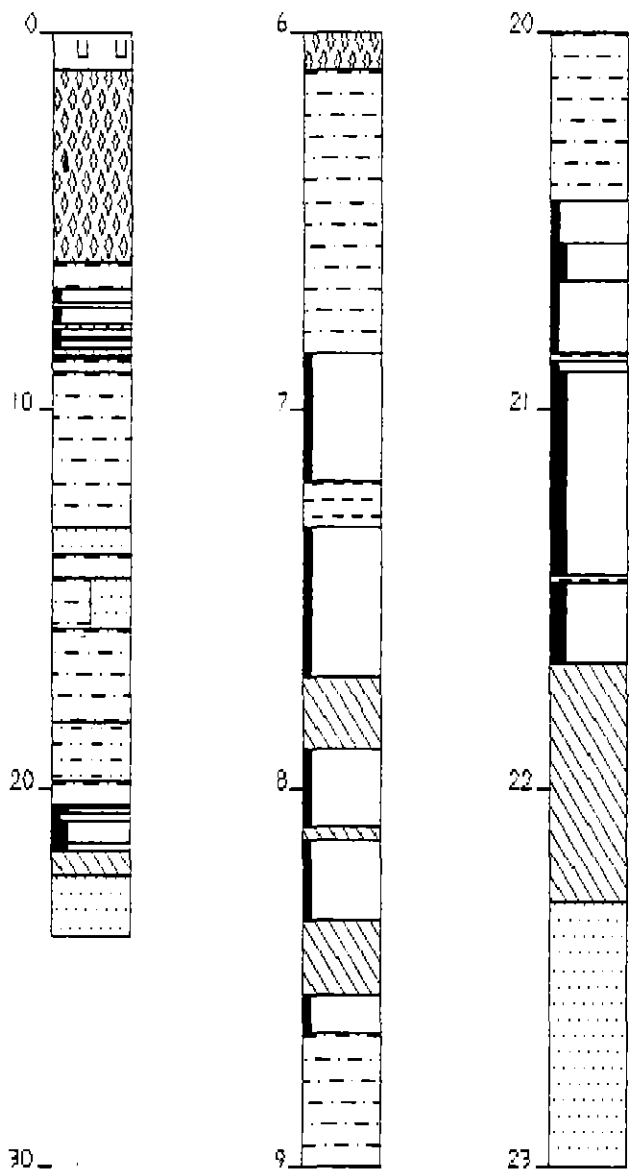








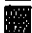


**CORNWALL COAL HAREFIELD "L"**

Location:	Harefield	Logged by:	J. Bryan
AMG Co-ordinates:	596368.5E	Drilled by:	Stacpoole Drilling
	5391697.9N		
Collar R.L.:	281.57m	Commenced:	Dec. 98
Total Depth:	22.80m	Completed:	Dec. 98

	Estimated Thickness (m)	Estimated Depth to Base of Stratum (m)	Remarks
SCREE & SOIL	6.10	6.10	
MUDSTONE, grey/brown, slightly weathered, weak	0.75	6.85	HQ Core
COAL, dull, slightly weathered	0.34	7.19	)
CLAYSTONE, dark grey, hard	0.12	7.31	)
COAL, dull to stony, hard	0.40	7.71	) DE Seam
CLAYSTONE, dark grey, carbonaceous	0.19	7.90	) 6.85-8.65
COAL, dull	0.20	8.10	) 1.80m
CLAYSTONE, black, carbonaceous	0.04	8.14	)
COAL, dull	0.21	8.35	)
CLAYSTONE, coaly	0.20	8.55	)
COAL, dull	0.10	8.65	)
MUDSTONE, grey, soft with carbonaceous interbeds	0.35	9.00	
MUDSTONE, grey, laminated, relatively weak	4.10	13.10	
SANDSTONE, grey, lithic, hard	0.70	13.80	
MUDSTONE, black with claystone interbeds, some coaly intervals up to 0.04m thick	0.65	14.45	
MUDSTONE & SANDSTONE interbedded, grey, hard	1.35	15.80	
MUDSTONE, green/grey laminated, carbonaceous in part, relatively weak	2.50	18.30	
SILTSTONE, grey, hard, relatively strong	1.55	19.85	
MUDSTONE, grey, laminated moderate strength	0.60	20.45	
COAL, dull	0.11	20.56	)
COAL, dull minor bright	0.10	20.66	) E3 Seam
COAL, dull	0.19	20.85	) 20.45-21.67

<b>CORNWALL COAL HAREFIELD "L" CONT'D</b>			
CLAYSTONE, grey/brown, hard	0.02	20.87	) <b>1.22m</b>
COAL, dull to stony	0.03	20.90	)
COAL, dull minor bright	0.54	21.44	) <b>E3 Seam</b>
CLAYSTONE, grey, tuffaceous	0.02	21.46	) <b>(cont'd)</b>
COAL, dull minor bright	0.21	21.67	)
MUDSTONE, black, carbonaceous	0.63	22.30	
SANDSTONE, grey, lithic, hard with carbonaceous partings (strong)	1.60	23.90	<b>T.D.</b>



-  COAL Dull minor
-  SILTSTONE
-  SANDSTONE
-  CARBONACEOUS MU
-  CLAYSTONE
-  COAL Dull
-  MUDSTONE
-  GRAVEL
-  SOIL

CORNWALL COAL HAREFIELD

CORNWALL COAL "L"

DATE DRILLED: DEC 98

GEOLOGY BY: MBGS

LOGGED BY: JH-BRYAN

PROLOG