

# DIAMOND DRILL CORE RECORD

943  
460

Hole No. 116  
 Drilled by ASSOCIATED DIAMOND DRILLERS  
 Core Recovery 69%  
 Geological Logging by —  
D. J. PERKIN

Area of Operation SAVAGE RIVER, TAS.  
 Location of Site 16' W ALONG TRAV. 2000S; 18'S  
 Date Commenced 3 - 8 - 1965  
 Date Completed 22 - 9 - 1965  
 COORDINATES 20,903 N / 20,412 E

Reduced Level of Site 1000.5  
 Bearing of Hole 270° 33 184  
 Dip of Hole 0° -55° 200' -53° 400' 600' 800'  
-51'30" -50'30" -52'30"  
 Bore Depth 900'

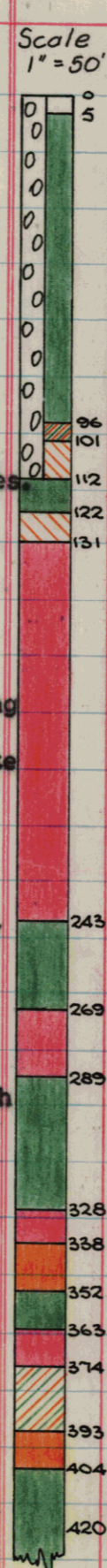
AMG Co-ords: 351022 E 5404617 N

Ref No 2091

DRILL RECORD				GEOLOGICAL LOG			GEOLOGICAL SECTION		ASSAY RESULTS							
Date 1965	From	To	Core Recov.	From	To	Description	Core	Sample	Sample No.	From	To	CRUDE	CONCENTRATE (-325 Mesh)			
									From Ft.	To Ft.	%Fe	Recovery	%Fe	%SiO <sub>2</sub>	%Ni	%TiO <sub>2</sub>
3/8	0.0	5.0	5.0	0.0	5.0	OVERBURDEN; Amphibolite scree and clay			0	96	(Amph)					
4/8	5.0	14.0	6.4						96	112	33.39	30.49	70.35		0.082	0.150
5/8	14.0	39.0	17.3	5.0	96.0	AMPHIBOLITE			112	122	(Amph)					
6/8	39.0	74.0	34.6			From 5.0 to 74.0 is amphibolite clay.			122	131	31.93	34.17	70.18		0.080	0.290
7/8	74.0	116.0	39.7			From 5.0 - 39.0 fine to medium-grained,			131	147	53.81	65.33	69.94		0.079	0.345
9/8	116.0	146.0	30.0			fairly massive with occasional soft zones,			147	163	48.79	61.64	70.43		0.050	0.345
10/8	146.0	177.0	30.6			quite oxidised, yellow-brown in color with			163	183	48.30	62.93	70.18		0.036	0.230
11/8	177.0	204.0	21.3			black oxidised chlorite along fracture planes.			183	203	53.83	68.72	70.31		0.051	0.190
13/8	204.0	239.0	27.7			Hematite - rich amphibolite clay zone from			203	223	55.52	71.22	70.80		0.039	0.195
14/8	239.0	261.0	8.8			10.0 to 12.0. Oxidised quartzo-feldspathic			223	243	59.97	77.03	71.20		0.036	0.200
16/8	261.0	281.0	4.0			vein at 20.0. Slightly sheared and altered			243	269	(Amph)					
17/8	281.0	308.5	12.2			amphibolite zone from 33.0 to 35.0 containing			269	289	60.94	77.81	70.78		0.058	0.130
18/8	308.5	321.5	9.5			moderate amounts of feldspathic and tremolite			289	328	(Amph)					
19/8	321.5	352.0	13.0			- actinolite minerals. From 39.0 to 74.0			328	338	59.00	75.97	71.12		0.051	0.160
20/8	352.0	374.0	10.8			clay is fine - grained, massive, fairly			338	352	26.51	28.57	70.96		0.042	0.155
21/8	374.0	409.0	19.9			oxidised, yellow-brown in color - Originally			352	363	(Amph)					
23/8	409.0	433.0	20.8			suffered minor alteration. Black oxidised			363	374	62.16	79.48	71.86	<0.5	0.037	0.185
24/8	433.0	465.0	29.6			chlorite film along fracture planes. From			374	393	30.75	30.89	69.12	3.40	0.070	0.250
25/8	465.0	487.0	20.7			72.0 - 74.0. Moderately oxidised and greenish			393	404	44.03	48.93	70.90	1.15	0.052	0.225
26/8	487.0	534.0	45.8			- yellow in color.			404	603	(Amph)					
27/8	534.0	552.0	15.1			From 74.0 to 96.0 amphibolite is fine-			603							
28/8	552.0	577.0	23.6			grained, massive, moderately oxidised,										
6/9	577.0	592.0	13.5			greenish - yellow, generally fairly hard										
7/9	592.0	614.5	15.6			with some soft zones. Broken zone from										
8/9	614.5	632.0	13.3			89.0 - 96.0.										
9/9	632.0	686.0	22.8													

LEGEND.

RICH	>55%Fe	MEDIUM LEAN	>22%Fe
MEDIUM RICH	>44%Fe	LEAN	>11%Fe
MEDIUM	>33%Fe	AMPHIBOLITE	<11%Fe
ZONE OF OXIDATION			



043

DRILL RECORD				GEOLOGICAL LOG			GEOLOGICAL SECTION		ASSAY RESULTS									
Date	From	To	Core Recov.	From	To	Description	Core	Sample	Sample No.	From Ft.	To Ft.	CRUDE %Fe	Wt. Recovery	%Fe	%SiO <sub>2</sub>	%Ni	%TiO <sub>2</sub>	
1965																		
10/9	686.0	709.5	18.2						603	611	51.96	61.09	71.86	0.54	0.028	0.130		
11/9	709.5	754.0	11.5						611	645	(Amph)							
13/9	754.0	758.0	3.2						645	656	54.63	67.24	71.86	0.52	0.035	0.225		
14/9	758.0	781.0	17.1						656	667	52.20	63.67	71.22	1.20	0.050	0.500		
15/9	781.0	792.0	8.5						667	686	38.04	47.95	70.90	1.45	0.026	0.470		
16/9	792.0	814.0	10.2						686	709	(Amph)							
17/9	814.0	845.0	9.9						709	719	40.63	44.27	70.49	1.65	0.070	0.540		
18/9	845.0	847.0	0.1	96.0	101.0	<u>MAGNETITE (LEAN)</u>			719	735	55.11	69.70	70.90	1.15	0.041	0.520		
20/9	847.0	872.5	8.1			Moderately oxidised, fine-grained magnetite			735	751	58.59	76.48	71.06	0.70	0.027	0.440		
21/9	872.5	898.0	19.8			occurs in blebs and stringers throughout a			751	867	(Amph)							
22/9	898.0	900.0	1.5			groundmass of moderately oxidised tremolite-			867	900	waste							
	<u>END OF HOLE</u>					actinolite and occasional feldspar, moderately												
				101.0	112.0	<u>MAGNETITE (MEDIUM LEAN)</u>												
						Fairly fine-grained, massive magnetite occurs												
						with minor pyrite and fair amounts of slightly												
						oxidised tremolite - actinolite and occasional												
						serpentine with a tendency to alignment (Delta												
						Angle = 40°) slightly oxidised with limonite												
						and oxidised chlorite along fracture planes.												
						Barren altered amphibolite zone from 107.5 -												
						109.0 and chlorite - rich altered amphibolite												
						zone from 110.0 to 111.5.												
				112.0	122.0	<u>AMPHIBOLITE</u>												
						Fine-grained, massive, fairly altered with												
						moderate amounts of epidote and chlorite and												
						minor pyrite disseminated throughout.												
				122.0	131.0	<u>MAGNETITE (MEDIUM LEAN)</u>												
						Bands, blebs and stringers of magnetite												
						alternate with bands containing tremolite -												
						actinolite, serpentine, epidote, chlorite												
						and minor pyrite (Delta Angle = 30°) Brownish												
						oxidised chlorite along fracture planes.												

33 185 461



DRILL RECORD				GEOLOGICAL LOG			GEOLOGICAL SECTION		ASSAY RESULTS								
Date	From	To	Core Recov.	From	To	Description	Core	Sample	Sample No.	From	To						
				289.0	328.0	Continued actinolite = rich zone from 290.0 to 297.0 and occasional pyrite blebs 289.0 = 297.0. Fairly broken core from 289.0 to 310.0.											
				328.0	338.0	<u>MAGNETITE (RICH).</u> Fairly fine-grained, massive with moderate amounts of tremolite = actinolite, pyrite and occasional serpentine throughout with a slight tendency to alignment (Delta Angle = 30° - 40°).											
				338.0	352.0	<u>MAGNETITE (MEDIUM)</u> Magnetite zones and blebs and stringers occur throughout a fine-grained massive altered amphibolite containing fair amounts of epidote, tremolite = actinolite and minor serpentine. Magnetite has a tendency to alignment and is associated with moderate amounts of pyrite, serpentine and minor talc. Fairly massive magnetite zone from 342.0 = 351.0.											
				352.0	363.0	<u>AMPHIBOLITE.</u> Fairly fine-grained, fairly massive, slightly altered with minor amounts of pyrite, tremolite-actinolite, black iron silicate and occasional talc and serpentine. = Fairly broken core. Chlorite and serpentine along fracture planes.											
				363.0	374.0	<u>MAGNETITE (RICH)</u> Fairly fine-grained, massive with minor amounts of tremolite = actinolite, pyrite and occasional talc and serpentine disseminated throughout. Fairly broken core.											
				374.0	393.0	<u>MAGNETITE (LEAN)</u> From 374.0 to 382.0, fairly fine-grained											

33 187 463





DRILL RECORD				GEOLOGICAL LOG			GEOLOGICAL SECTION		ASSAY RESULTS									
Date	From	To	Core Recov.	From	To	Description	Core	Sample	Sample No.	From	To							
				404.0	603.0	Continued pyrite and actinolite - rich zone with a tendency to mineral alignment (Delta Angle = 30° - 45°) occurs from 586.5 - 587.5 with transgressing hematite veinlets running across the lination (Delta Angle for hematite veinlets is approx. 90°). - Minor magnetite vein from 594.4 to 594.6. - Hematite and chlorite along fracture planes.												
				603.0	611.0	<u>MAGNETITE (RICH)</u> Fairly fine-grained, massive with minor pyrite and tremolite - actinolite disseminated throughout with a slight tendency to alignment (Delta Angle = 40° - 50°).												
				611.0	645.0	<u>AMPHIBOLITE</u> Fine grained, massive, fairly altered with many epidote and actinolite veinlets disseminated irregularly throughout with blebs of pyrite and occasional carbonate veinlets. - Epidote - rich magnetite zone from 635.0 - 636.0.												
				645.0	667.0	<u>MAGNETITE (RICH)</u> Fine to medium - grained, massive with minor pyrite and tremolite - actinolite disseminated throughout with a slight tendency to irregular alignment. (Delta Angle = 30° - 50°).												
				667.0	686.0	<u>MAGNETITE (MEDIUM RICH)</u> Fine to medium - grained, massive with moderate amounts of tremolite - actinolite and minor pyrite and serpentine disseminated throughout with a slight tendency to irregular alignment (Delta Angle = 30° - 45°).												
				686.0	709.0	<u>AMPHIBOLITE</u>												

33 190 466

043

DRILL RECORD				GEOLOGICAL LOG			GEOLOGICAL SECTION		ASSAY RESULTS								
Date	From	To	Core Recov.	From	To	Description	Core	Sample	Sample No.	From	To						
				668.0	709.0	Continued											
						Fairly fine-grained, massive, fairly altered with minor amounts of actinolite epidote, pyrite, carbonate and hematite disseminated irregularly throughout in veinlets. - Hematite and chlorite film a fracture planes.											
				709.0	719.0	<u>MAGNETITE (MEDIUM RICH)</u> Fine to medium grained, massive with occasional voids, friable in parts with moderate amounts of tremolite - actinolite and serpentine and minor pyrite disseminated throughout - moderately broken core, fairly poor core recovery.											
				719.0	751.0	<u>MAGNETITE (RICH)</u> Fine to medium-grained, massive with occasional voids, moderately friable with minor pyrite, tremolite - actinolite and serpentine disseminated throughout. - Fairly broken core. - Poor core recovery.											
				751.0	814.0	<u>AMPHIBOLITE.</u> Fairly fine-grained, massive, fairly altered with moderate amounts of epidote and occasional pyrite, magnetite and black iron silicate minerals disseminated throughout in blebs and stringers. Magnetite - rich zone from 360.0 - 365.0. Moderately broken core - hematite and chlorite along fracture planes.											
				814.0	867.0	<u>AMPHIBOLITE.</u> Fairly fine-grained, massive, fairly altered with minor hematite and epidote veinlets disseminated throughout with a slight tendency to irregular banding (Delta angle = 30° - 40°) - Magnetite - rich zones											

33 191

467

DRILL RECORD				GEOLOGICAL LOG			GEOLOGICAL SECTION		ASSAY RESULTS								
Date	From	To	Core Recov.	From	To	Description	Core	Sample	Sample No.	From	To						
				814.0	867.0	Continued occur at 834.2 - 834.9, 814.0 - 845.8, 847.0 - 849.3. Chlorite and hematite film along fracture planes. - Fairly broken core.											
				867.0	900.0	<u>BANDED QUARTZOFELDSPATHIC - CARBONATE - CHLORITE SCHIST.</u>											
				<u>END OF HOLE</u>		Fine-grained, fairly hard and massive with slightly wavy bands of quartzofeldspathic material and carbonate alternating with chlorite and occasional actinolite. - Minor pyrite blebs occur occasionally throughout, generally strung out and aligned parallel to the banding and schistosity (Delta Angle of Banding and Schistosity = 20° - 45° but generally about 35°). - Occasional quartz and carbonate veinlets occur which cut across and are normal to the schistosity.											
						<u>END OF HOLE.</u>											

33 192 468