

DIAMOND DRILL CORE RECORD

Hole No. 118
 Drilled by ASSOCIATED DIAMOND DRILLERS
 Core Recovery 69%
 Geological Logging by —
D. J. PERKIN, T. MUNRO

Area of Operation SAVAGE RIVER, TASMANIA
 Location of Site 390°E ALONG TRAV. B80 ; 56°S
 Date Commenced 24-11-'65
 Date Completed 12-1-'66
 COORDINATES: 23,712 N ; 21,677 E

Reduced Level of Site 1016.5
 Bearing of Hole 270°
 Dip of Hole 0° 50° 250° 400° 600° 800°
-45° -47° -48°30' -49° -49° -48°30'
 Bore Depth 800'

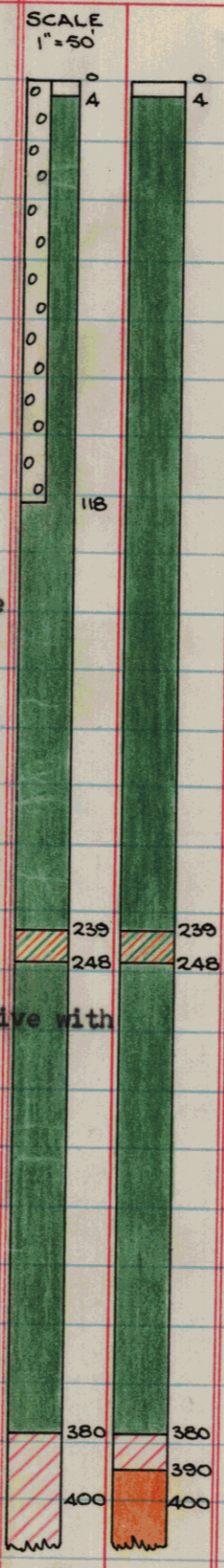
043
478
33 204

A 29297

AMG G-ordo: 351405 E 5405427 N

Ref N° 2093

DRILL RECORD				GEOLOGICAL LOG		GEOLOGICAL SECTION	ASSAY RESULTS								
Date 1965	From	To	Core Recov.	From	To		Description	Sample No.	From	To	CRUDE	CONCENTRATE (-325 Mesh)			
										%Fe	Recovery	%Fe	%SiO ₂	%Ni	%TiO ₂
24/11	0.0	32.5	11.0	0.0	4.0	OVERBURDEN		0	4	Overburden					
25/11	32.5	101.0	29.3	4.0	239.0	AMPHIBOLITE:		4	239	(Amph)					
26/11	101.0	145.0	21.9			From 4.0 to 101.0 is amphibolite clay,		239	248	18.27	12.88	70.23		0.031	0.235
27/11	145.0	179.0	30.2			massive, fairly soft and friable, quite		248	260	37.34	44.84	71.04		0.01	0.145
29/11	179.0	183.5	2.4			oxidised, yellow-brown in color; originally		260	307	(Amph)					
30/11	183.5	210.0	24.8			fairly altered and sheared in places with		307	313	35.24	30.76	69.99		0.057	0.112
1/12	210.0	240.0	27.2			quartzofeldspathic and epidote blebs and		Redrilled from 248 ft. after hole ran off							
2/12	240.0	270.0	29.1			veinlets throughout. Soft and broken core.		248	380	(Amph)					
3/12	270.0	281.0	9.8			Poor core recovery.		380	390	48.81	55.34	70.07		0.086	0.345
4/12	281.0	301.0	18.6			From 101.0 to 118.0, amphibolite is quite		390	409	34.43	38.55	69.34		0.078	0.340
6/12	301.0	313.0	11.3			to fairly oxidised, fairly fine-grained,		409	423	(Amph)					
						REDRILLED		423	437	40.01	46.21	70.96		0.043	0.395
15/12	248.0	282.0	15.2			massive with a tendency to shearing and		437	452	52.21	64.73	70.31		0.039	0.385
17/12	282.0	288.0	4.2			crystal alignment in some places (Delta		452	467	57.22	73.21	69.99		0.039	0.410
18/12	288.0	323.0	24.3			Angle = 5°-10°). Originally fairly altered.		467	482	52.37	66.27	70.39		0.027	0.345
19/12	323.0	337.3	10.3			Yellow-brown to greenish-brown in color.		482	498	30.87	31.59	68.53		0.072	0.270
20/12	337.3	378.0	25.3			From 118.0 to 123.0 amphibolite is only		498	514	12.43	7.00	-		-	-
21/12	378.0	394.0	10.8			slightly oxidised, fairly fine-grained, massive with		514	533	16.46	11.58	66.91		0.069	0.09
22/12	394.0	429.0	7.9			brown limonite film on fracture planes.		533	553	15.82	11.25	68.68		0.028	0.370
29/12	429.0	448.0	5.5			From 123.0 to 157.0, generally fairly		553	573	15.82	11.02	69.25		0.034	0.165
30/12	448.0	468.0	3.3			fine-grained, massive, fairly altered with a		573	589	53.11	65.05	70.94		0.037	0.090
31/12	468.0	495.7	20.8			spotted appearance and a tendency to crystal		589	605	50.60	61.20	70.51		0.033	0.09
1/1	495.7	521.5	15.8			alignment (Delta Angle = 15°). Slightly		605	621	55.93	71.56	70.78		0.043	0.140
3/1	521.5	562.5	23.8			magnetic. Soft and friable magnetic-rich		621	636	53.11	67.80	70.70		0.041	0.195
4/1	562.5	569.0	1.5			zone 128.0 - 129.0. Generally only slightly		636	650	22.60	12.84	69.17		0.097	0.112
5/1	569.0	619.0	35.5			oxidised. Rock is a sheared amphibolite or		650	658	24.54	22.63	69.25		0.078	0.135
6/1	619.0	626.0	6.0			a metasomatised schist(?)		658	753	(Amph)					
						From 157.0 to 200.0, fine to medium-grained,									



A 29297

479 043

DRILL RECORD				GEOLOGICAL LOG		GEOLOGICAL SECTION		ASSAY RESULTS									
Date	From	To	Core Recov.	From	To	Description	Core	Sample	Sample No.	From Ft.	To Ft.	CRUDE %Fe	WE Recovery	CONCENTRATE (-325 Mesh) %Fe	%SiO ₂	%Ni	%TiO ₂
				4.0	239.0	Continued...				753	770	48.51	63.12	69.73		0.034	0.235
						massive, with epidote blebs and occasional veinlets throughout. Moderately altered with quartzofeldspathic, actinolite and hematite veinlets disseminated irregularly throughout. Brown limonite film along fracture planes in places. Occasional soft shear zones.	400	400		770	800	(Amph)					
						From 200.0 to 223.0, fairly fine grained, fairly massive, fairly altered and slightly sheared with epidote, quartzofeldspathic and hematite veinlets throughout. Slightly moderately oxidised with a brown limonite film on fracture planes. Moderately soft and broken core. Very soft puggy clay zone 222.5 - 223.0.	409	409									
						From 223.0 to 239.0, fairly fine - grained and fairly massive, fairly sheared tending towards a tremolite - actinolite chlorite schist (Delta Angle = 25°), Minor pyrite blebs and occasional veinlets disseminated throughout. Soft magnetite - rich zone 2230. - 224.0. Fairly broken core	423	423									
				239.0	248.0	<u>MAGNETITE (LEAN)</u>	452	452									
						Massive, fairly fine-grained; irregular blebs and stringers of magnetite and moderate amounts of pyrite occur throughout a tremolite and serpentine-rich altered amphibolite with a tendency to alignment (Delta Angle varies from 0°-35°). Moderately fissile in places. Massive, hard, altered amphibolite zone 243.0 - 245.6. Serpentine along fracture planes.	467	467									
							482	482									
							498	498									
							513	513									
							605	605									
							621	621									
							636	636									
							658	658									
							753	753									
							770	770									
							800	800									

L E G E N D

RICH	>55%Fe		MEDIUM LEAN	>22%Fe	
MEDIUM RICH	>44%Fe		LEAN	>11%Fe	
MEDIUM	>33%Fe		AMPHIBOLITE	<11%Fe	
			ZONE OF OXIDATION		

481 047

DRILL RECORD				GEOLOGICAL LOG			GEOLOGICAL SECTION		ASSAY RESULTS									
Date	From	To	Core Recov.	From	To	Description	Core	Sample	Sample No.	From	To							
						REFILLED AFTER RUN-OFF OF HOLE												
				248.0	380.0	<u>AMPHIBOLITE</u> From 248.0 to 282.0, fairly fine-grained, massive, fairly altered with minor epidote and actinolite blebs and stringers and occasional quartz veinlets. From 282.0 to 380.0 fine-grained, fairly massive, fairly altered with minor quartz, carbonate, epidote, hematite and quartzfeldspathic veinlets throughout. Fine to medium-grained epidote-rich zone 349.0 - 375.0 with minor black iron silicate blebs throughout. Minor sheared and broken zone 282.0 - 283.0. Soft puggy clay zone 376.7 - 376.8. Chlorite and minor hematite on fracture planes. Moderately broken core.												
				380.0	409.0	<u>MAGNETITE (MEDIUM-RICH)</u> Fine-grained, massive, with moderate amounts of pyrite and serpentine and minor tremolite + actinolite disseminated throughout with a slight tendency to alignment (Delta Angle = 30°-50°). Broken, fairly altered, fine-grained amphibolite zone 389.7 - 391.8. Moderately broken core.												
				409.0	423.0	<u>AMPHIBOLITE</u> Fine-grained, massive, fairly altered with minor epidote, pyrite and actinolite veinlets throughout. Epidote-rich zone with blebs of black iron silicates 417.0 - 423.0. Chlorite on fracture planes.												
				423.0	482.0	<u>MAGNETITE (RICH)</u> Fairly fine-grained, fairly massive, with moderate amounts of pyrite, serpentine,												

33 207

DRILL RECORD				GEOLOGICAL LOG			GEOLOGICAL SECTION		ASSAY RESULTS									
Date	From	To	Core Recov.	From	To	Description	Core	Sample	Sample No.	From	To							
				658.0	753.0	Continued... pyrite. Quartz-rich veins up to 0.5" thick. Serpentine and hematite films on fracture planes. Core relatively unbroken. Fine-grained amphibolite zones - 699.6 - 700.1, 701.0 - 702.1, and 734.9 - 736.3.												
				753.0	770.0	<u>MAGNETITE (RICH)</u> Fairly fine-grained with minor pyrite, serpentine and tremolite - actinolite disseminated throughout in blebs and with a tendency for irregular alignment (Delta Angle = 70°). Serpentine, hematite and clay on fracture planes. Core recovery poor. Core very broken. Amphibolite zone 755.6 - 756.0.												
				770.0	800.0	<u>AMPHIBOLITE</u> Fine to medium - grained, fairly altered, with fair amounts of tremolite - actinolite, epidote, moderate feldspar and minor serpentine. Thin epidote and tremolite - actinolite veinlets throughout. Serpentine on fracture planes. Core broken from 788.0 - 800.0. Very poor core recovery 790.7 - 800.0. Fine - grained zone 772.9 - 773.8.												
						<u>END OF HOLE.</u>												
						<u>END OF HOLE.</u>												

33 210