

DIAMOND DRILL CORE RECORD

Hole No. 204
 Drilled by Associated Diamond Drillers
 Core Recovery 41.5%
 Geological Logging by D.J. Perkin

Area of Operation Savage River, Tasmania
 Location of Site 266 Along Trav. 250 S; 31'S
 Date Commenced 17th .3. 1965
 Date Completed 9th. 4. 1965

Reduced Level of Site 941.8°
 Bearing of Hole 270°
 Dip of Hole -55
 Bore Depth 208'

MINI? COORDS 22 533 N 20 522 E

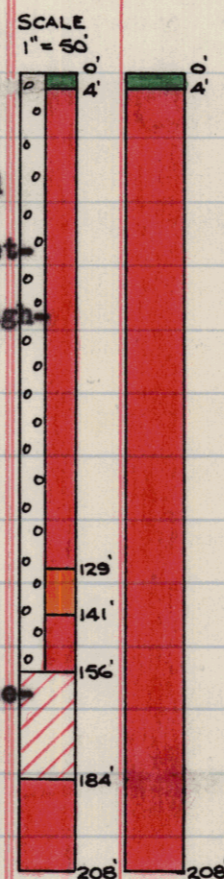
AMG Co-ords: 351055E 540 5072 N.

Ref No 200

42 042

A 22375

DRILL RECORD				GEOLOGICAL LOG			GEOLOGICAL SECTION		ASSAY RESULTS <i>No Core held.</i>							
Date	From	To	Core Recov.	From	To	Description	Core	Sample	Sample No.	From	To	CRUDE	CONCENTRATE (-325 Mesh)			
1965									From Ft.	To Ft.	%Fe	Wt. Recovery	%Fe	%SiO2	%Ni	%TiO2
17/3	0.0	6.0	2.4	0.0	4.0	<u>OVERBURDEN</u>			0	4	(Amph)					
19/3	6.0	11.0	4.6	4.0	129.0	<u>MAGNETITE (RICH)</u> Fairly fine grain, massive;			4	24	65.63	21.25	69.67	0.024	0.030	
20/3	11.0	13.5	2.5			from 4.0-6.0 the magnetite is quite oxidised			24	44	65.71	34.11	68.67	0.027	0.030	
22/3	13.5	28.0	11.2			with a slightly pitted surface. Weakly magnet-			44	64	67.08	59.13	71.76	0.024	0.027	
23/3	28.0	54.0	12.4			ic with hematite, limonite and goethite through-			64	84	67.00	56.45	69.50	0.023	0.025	
24/3	54.0	66.0	8.2			out.			84	99	67.40	21.64	69.50	0.017	0.022	
26/3	66.0	94.0	7.5			Weakly to moderately magnetic 6.0 to 54.0;			99	114	66.60	6.93	-	-	-	
30/3	94.0	107.0	3.2			moderately magnetic 54.0 to 62.0; weakly			114	129	64.82	72.66	69.99	0.038	0.017	
31/3	107.0	129.0	8.6			magnetic 62.0 to 70.0; moderately magnetic			129	141	56.82	62.51	69.18	0.039	0.023	
1/4	129.0	156.0	5.1			70.0 to 84.5; weakly magnetic 84.5 to 115.0;			141	161	60.29	75.41	71.12	0.043	0.095	
2/4	156.0	166.0	3.9			moderately magnetic 115.0 -120.0 and moderate-			161	181	55.12	67.86	71.12	0.053	0.22	
5/4	166.0	174.0	2.8			ly to strongly magnetic 120.0-129.0.			181	194	58.35	72.08	71.12	0.039	0.40	
6/4	174.0	184.0	1.3			Fairly fine grain to 66.0, fine-medium grain			194	208	58.92	73.07	71.28	0.035	0.63	
9/4	184.0	208.0	12.7			66.0-129.0. From 6.0 to 120.0 the magnetite										
						<u>HOLE ABANDONED.</u>										
				129.0	141.0	<u>MAGNETITE (MEDIUM)</u> Fine-medium grained fair-										
						ly oxidised with minor pyrite and hematite										
						throughout. Clayey zone 129.0-136.0 poor										
						core recovery.										
				141.0	156.0	<u>Magnetite (RICH)</u> Fine-medium grained, only										
						slightly oxidised, massive with moderate										



LEGEND

RICH	55%Fe		MEDIUM LEAN	22%Fe
MEDIUM RICH	44%Fe		LEAN	11%Fe
MEDIUM	33%Fe		AMPHIBOLITE	11%Fe

ZONE OF OXIDATION

○○○○○
○○○○○
○○○○○

