

DIAMOND DRILL CORE RECORD

Hole No. **210**
 Drilled by **ASSOCIATED DIAMOND DRILLERS**
 Core Recovery **77.4%**
 Geological Logging by —

Area of Operation **SAVAGE RIVER, Tasmania**
 Location of Site **410' W ALONG TRAY, AOBQ; 55' N**
 Date Commenced **21-6-65**
 Date Completed **24-6-65**

Reduced Level of Site **1082.0**
 Bearing of Hole **270°**
0° **130°**
-45° **-44°**
 Dip of Hole
 Bore Depth **156'**

D. J. PERKIN

MINE COORDS 23111 N 20999 E

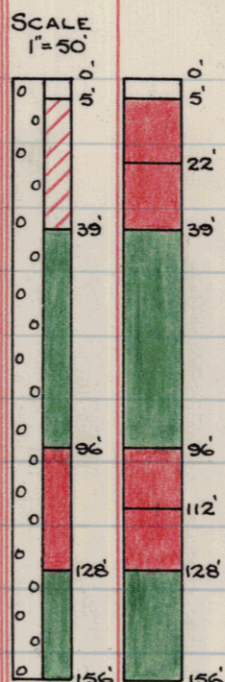
Ref No 2106.

42 061

AMG Co-ords: 351200 E 5405245 N.

A 22375

DRILL RECORD				GEOLOGICAL LOG			GEOLOGICAL SECTION		ASSAY RESULTS <i>No Core held.</i>									
Date	From	To	Core Recov.	From	To	Description	Core	Sample	Sample No.	From	CRUDE	WT	CONCENTRATE	% S102	% N1	% T102		
									From Ft.	To Ft.	% Fe	Recovery	% Fe					
1965																		
21/6	0.0	5.0	0.1	0.0	5.0	OVERBURDEN - Ironstone gravel and scree.			0	5	Overburden							
22/6	5.0	31.0	32.9						5	22	65.58	54.00	69.80		0.073	0.19		
23/6	51.0	91.0	27.9	5.0	39.0	MAGNETITE (Medium - Rich), fine - medium grain, massive, fairly oxidised with a pitted surface. Weakly to moderately magnetic 5.0 - 23.5 and moderately to strongly magnetic 25.0 - 39.0 with moderate amounts of hematite and minor limonite and goethite throughout. soft oxidised clay zone 23.5 - 25.0. - Limonite and clay film along fracture planes.			22	39	65.74	68.88	69.96		0.056	0.22		
24/6	91.0	156.0	60.0						39	96	(Amph)							
									96	112	64.93	50.97	69.23		0.090	0.41		
									112	128	64.60	43.40	68.66		0.082	0.40		
									128	156	(Amph)							
									End									
				39.0	96.0	AMPHIBOLITE: from 39.0 to 77.0, amphibolite clay is fairly massive, fairly fine grained, quite oxidised, orange-brown in colour. - Fairly soft zone 40.0 - 50.0 and fairly friable 50.0 - 77.0. From 77.0 to 84.0, amphibolite clay is fairly oxidised, friable and yellow - brown in colour. From 84.0 to 91.0, the amphibolite is slightly oxidised, greenish and moderately friable. - Moderately oxidised greenish - yellow clay to 93.0 and fairly oxidised yellow - brown clay to 96.0. - Black oxidised hematite and chlorite along fracture planes.												



END.

LEGEND			
RICH	> 55% Fe		MEDIUM LEAN > 22% Fe
MEDIUM RICH	> 44% Fe		LEAN > 11% Fe
MEDIUM	> 33% Fe		AMPHIBOLITE < 11% Fe
			ZONE OF OXIDATION

