

DIAMOND DRILL CORE RECORD

Hole No. 225
 Drilled by ASSOCIATED DIAMOND DRILLERS
 Core Recovery 72%
 Geological Logging by —
D. J. PERKIN

Area of Operation SAVAGE RIVER, Tas.
 Location of Site 540°W ALONG TRAV. 500S; 22°S
 Date Commenced 17-9-1965
 Date Completed 22-9-1965
 COORDINATES 22,269 N; 20,266 E

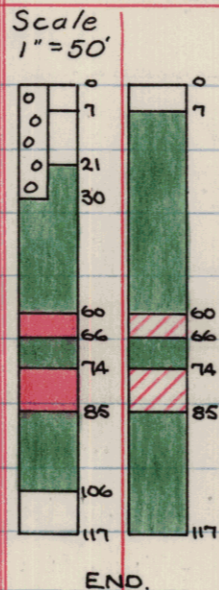
Reduced Level of Site 865.9
 Bearing of Hole 270°
 Dip of Hole 0° 90°
-55° -54°
 Bore Depth 117'

AMG Co-ords: 350977 E 540499 N.

Ref No 2121

42 111

DRILL RECORD				GEOLOGICAL LOG			GEOLOGICAL SECTION		ASSAY RESULTS								
Date 1965	From	To	Core Recov.	From	To	Description	Core	Sample	Sample No.	From Ft.	To Ft.	CRUDE %Fe Recovery Wt.	CONCENTRATE (-325Mesh)				
												%Fe	%SiO ₂	%Ni	%TiO ₂		
17/9	0.0	26.0	14.2	0.0	7.0	<u>OVERBURDEN</u>				0	7	Overburden					
19/9	26.0	49.0	17.1			Ironstone and clay scree.				7	60	(Amph)					
20/9	49.0	84.0	29.5	7.0	21.0	<u>RECEMENTED SCREE</u>				60	66	52.28	63.07	71.14	<0.5	0.063	0.405
21/9	84.0	115.0	21.7			Angular pebbles of hematite, goethite and limonite are held together with an iron-rich cement - numerous voids throughout and hard and massive in places. Very broken core. Weakly to non-magnetic. Poor core recovery.				66	74	(Amph)					
22/9	115.0	117.0	1.6			<u>END OF HOLE</u>				74	85	52.93	65.11	71.71	<0.5	0.024	0.125
				21.0	60.0	<u>AMPHIBOLITE CLAY</u>				85	106	(Amph)					
						Fine-grained massive though generally soft, fairly oxidised and yellow-brown in color from 21.0 to 26.0, greenish brown and moderately oxidised to 30.0 and slightly oxidised greenish amphibolite from 30.0 - 60.0. Generally slightly altered and slightly sheared with minor carbonate veins and minor epidote throughout. Minor fine-grained magnetite zones with minor pyrite 43.0 - 43.3 and 55.0 - 56.0.				106	117	(Amph)					
				60.0	66.0	<u>MAGNETITE (RICH)</u>											
						Medium-grained, massive, fairly friable with minor pyrite and tremolite + actinolite disseminated throughout.											
				66.0	74.0	<u>AMPHIBOLITE</u>											
						Fine-grained, fairly broken, slightly altered and slightly sheared in places, with											



LEGEND.					
RICH	> 55%Fe	(Red)	MEDIUM LEAN	> 22%Fe	(Diagonal lines)
MEDIUM RICH	> 44%Fe	(Diagonal lines)	LEAN	> 11%Fe	(Green)
MEDIUM	> 33%Fe	(Green)	AMPHIBOLITE	< 11%Fe	(White with circles)
			ZONE OF OXIDATION		(White with circles)

