

DIAMOND DRILL CORE RECORD

Hole No. 228
 Drilled by ASSOCIATED DIAMOND DRILLERS
 Core Recovery 71%
 Geological Logging by —
D. J. PERKIN

Area of Operation SAVAGE RIVER, Tas.
 Location of Site 160' E ALONG TRAV. B8CO; 125' N
 Date Commenced 7-10-1965
 Date Completed 16-10-1965
 CO-ORDINATES: 24,337 N; 21,156 E

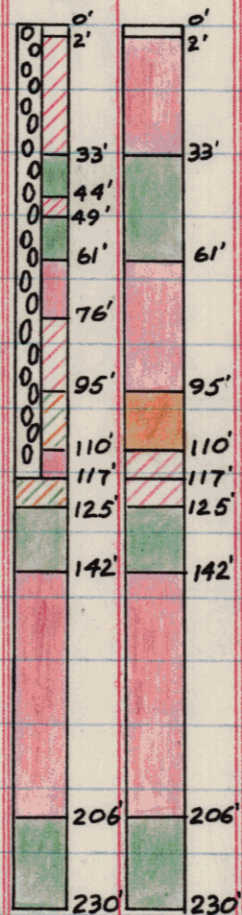
Reduced Level of Site 1020.9
 Bearing of Hole 270°
 Dip of Hole 55°00' 200'
54°30'
 Bore Depth 230'

42 124

AMG Co-ords: 351249 E 5405610 N.

Ref No 2124

DRILL RECORD				GEOLOGICAL LOG			GEOLOGICAL SECTION		ASSAY RESULTS <i>No Core held</i>								
Date 1965	From	To	Core Recov.	From	To	Description	Core	Sample	Sample No.	From Ft.	To Ft.	CRUDE %Fe	Recovery Wt.	CONCENTRATE (-325 Mesh)			
												%Fe	%Fe	%SiO ₂	%Al	%TiO ₂	
7/10	0.0	44.0	24.8	0.0	2.0	<u>OVERBURDEN</u>				0	2	Overburden					
8/10	44.0	71.0	13.5			Ironstone scree and clay				2	18	66.36	67.40	70.25	<0.5	0.048	0.175
9/10	71.0	97.0	21.5	2.0	33.0	<u>MAGNETITE (MEDIUM-RICH)</u>				18	33	64.42	52.87	69.76	<0.5	0.052	0.280
11/10	97.0	128.0	25.4			Fine to medium - grained, massive with a pitted surface, moderately oxidised with moderate amounts of hematite and minor goethite and limonite throughout.				33	61	(Amph)					
12/10	128.0	145.0	15.6							61	76	65.72	76.93	70.09	<0.5	0.059	0.150
13/10	145.0	167.0	13.5							76	95	57.38	66.94	69.93	<0.5	0.052	0.245
14/10	167.0	198.0	26.9							95	110	35.12	36.48	70.90	<0.5	0.044	0.255
15/10	198.0	220.0	14.1			Moderately to strongly magnetic. Clay and limonite along fracture planes. - Minor oxidised amphibolite clay zones occur throughout although a portion of these appears to have washed away. - Poor core recovery.				110	125	44.47	54.44	70.61	<0.5	0.037	0.185
16/10	220.0	230.0	8.1							125	142	(Amph)					
										142	158	59.24	72.45	71.83	<0.5	0.054	0.175
										158	174	57.62	73.08	71.91	<0.5	0.027	0.340
										174	190	62.41	79.31	71.83	<0.5	0.023	0.500
										190	206	57.38	72.08	71.75	<0.5	0.024	0.660
				33.0	44.0	<u>AMPHIBOLITE CLAY.</u>				206	206	(Amph)					
						Fine - grained, massive, fairly altered, moderately oxidised, greenish to reddish-brown in color. - Poor core recovery.				206	230						
				44.0	49.0	<u>MAGNETITE (MEDIUM-RICH).</u>											
						Fine to medium - grained, fairly massive with a pitted surface, moderately to slightly oxidised. Moderately to strongly magnetic. Minor hematite, limonite and goethite throughout. - Very poor core recovery. - Clay zones washing away.											
				49.0	61.0	<u>AMPHIBOLITE</u>											
						Fine-grained, fairly massive, slightly											

Scale
1" = 50'

END.

LEGEND.

RICH	> 55%Fe		MEDIUM LEAN	> 22%Fe	
MEDIUM RICH	> 44%Fe		LEAN	> 11%Fe	
MEDIUM	> 33%Fe		AMPHIBOLITE	< 11%Fe	
			ZONE OF OXIDATION		

