

DIAMOND DRILL CORE RECORD

675 (47)

Hole No. 230  
Drilled by ASSOCIATED DIAMOND DRILLERS  
Core Recovery 65%  
Geological Logging by —  
D. J. PERKIN

Area of Operation SAVAGE RIVER, TAS.  
Location of Site 173' W ON TRAV. B80; 35'S  
Date Commenced 6-11-1965  
Date Completed 15-11-1965  
COORDINATES: 23,710 N; 21,113 E

Reduced Level of Site 1088.9  
Bearing of Hole 270°  
Dip of Hole 0° 220°  
-45° -46° 30'  
Bore Depth 272'

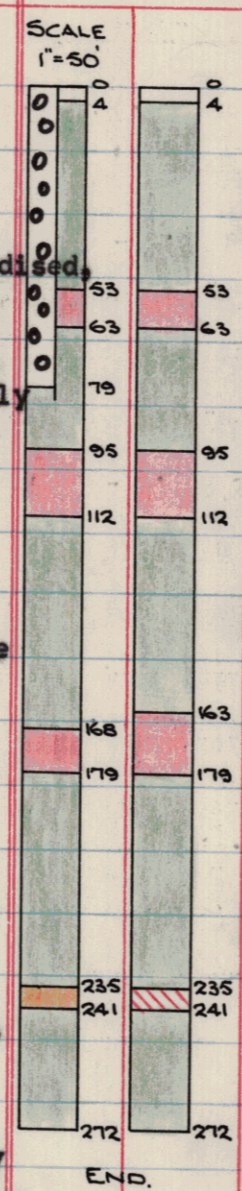
General  
AMG Co-ords: 351000 E

5405000 N. Box Not plotted.

Ref No 2126

42 134

DRILL RECORD				GEOLOGICAL LOG			GEOLOGICAL SECTION		ASSAY RESULTS							
Date 1965	From	To	Core Recov.	From	To	Description	Core	Sample	Sample No.	From	CRUDE	CONCENTRATE (-325 Mesh)				
									From Ft.	To Ft.	%Fe	Recovery %Fe	%SiO <sub>2</sub>	%Ni	%TiO <sub>2</sub>	
6/11	0.0	39.2	27.0	0.0	4.0	OVERBURDEN			0	4	Overburden					
8/11	39.2	88.0	39.9			Clay and ironstone scree.			4	53	(Amph)					
9/11	88.0	151.5	47.1	4.0	53.0	AMPHIBOLITE CLAY			53	63	59.08	29.47	69.52	<0.5	0.019	0.34
10/11	151.5	175.0	14.2			Fairly fine grained, massive, quite oxidised,			63	95	(Amph)					
11/11	175.0	188.0	4.5			reddish - brown in colour to 15.0, yellow-			95	112	56.81	69.59	71.38	<0.5	0.035	0.29
12/11	188.0	201.5	10.7			brown 15.0 - 53.0. Moderately hard and fairly			112	163	(Amph)					
13/11	201.5	234.5	13.5			friable throughout. Red and black hematite			163	179	56.09	73.88	71.86	<0.5	0.01	0.20
15/11	234.5	272.0	18.1			chlorite film along fracture planes.			179	235	(Amph)					
	END OF HOLE			53.0	63.0	MAGNETITE (MEDIUM-RICH)			235	241	29.14	35.22	69.93	<0.5	0.01	1.0
						Fine medium grain, massive with moderate			241	272	(Amph)					
						amounts of oxidised tremolite - actinolite										
						minerals and amphibolite clay together with										
						minor pyrite throughout. Magnetite is										
						moderately oxidised with moderate amounts of										
						hematite and minor limonite and goethite										
						throughout. - Weakly to moderately magnetic.										
				63.0	95.0	AMPHIBOLITE										
						From 63.0 to 89.0, amphibolite is fairly										
						fine grained, massive, yellow-brown in colour,										
						quite oxidised with oxidation colour - banding										
						and zoning in places. Fairly oxidised medium										
						grained magnetite zones 72.0 - 74.0, and 78.0										
						oxidised										
						- 79.0. Red and black hematite and chlorite										
						film along fracture planes.										
						From 89.0 to 95.0, amphibolite is a										
						soft greenish fairly altered amphibolite clay										



RICH	> 55%Fe	(Red)	MEDIUM LEAN	> 22%Fe
MEDIUM RICH	> 44%Fe	(Red with diagonal lines)	LEAN	> 11%Fe
MEDIUM	> 33%Fe	(Orange)	AMPHIBOLITE	< 11%Fe
			ZONE OF OXIDATION	(Green with circles)



