

DIAMOND DRILL CORE RECORD

683

043

Hole No. 233
 Drilled by ASSOCIATED DIAMOND DRILLERS
 Core Recovery 82%
 Geological Logging by —
D. J. PERKIN

Area of Operation SAVAGE RIVER, Tas.
 Location of Site 165' E ALONG TRAV. B80; 112' N
 Date Commenced 1-12-1965
 Date Completed 13-12-1965
 COORDINATES: 23,861 N ; 21,447 E

Reduced Level of Site 1039.7
 Bearing of Hole 270°
 Dip of Hole 0° 2008
-45° -44 30'
 Bore Depth 263'

42 145

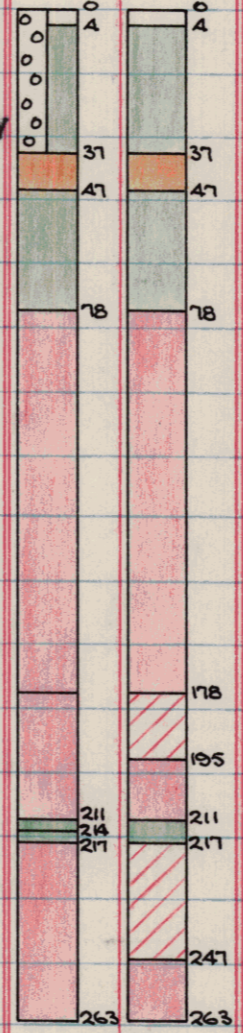
Ref No. 2129

AMG Co-ords: 351335E 5405472 N.

DRILL RECORD				GEOLOGICAL LOG			GEOLOGICAL SECTION		ASSAY RESULTS									
Date	From	To	Core Recov.	From	To	Description	Core	Sample	Sample No.	From	To	CRUDE %Fe	Recovery %Fe	CONCENTRATE (-325 Mesh) %SiO ₂	%Ni	%TiO ₂		
1/12	0.0	47.0	34.0	0.0	4.0	OVERBURDEN			0	4	0	4	Overburden					
2/12	47.0	78.0	21.0	4.0	37.0	AMPHIBOLITE CLAY			4	37	4	37	(Amph)					
3/12	78.0	97.1	12.6			Fairly fine grained, massive, moderately friable, quite to fairly oxidised, orange - brown to yellow - brown in color with brown and black oxidised chlorite film along fracture planes. Amphibolite was originally moderately altered.			37	47	37	47	35.01	41.59	69.37	0.56	0.024	0.280
4/12	97.1	114.5	14.6						47	78	47	78	(Amph)					
7/12	114.5	151.0	34.7						78	98	78	98	61.08	80.60	70.67	<0.5	0.029	0.145
8/12	151.0	192.5	37.5						98	118	98	118	62.55	81.60	70.83	<0.5	0.040	0.08
9/12	192.5	214.0	19.4						118	138	118	138	62.89	82.52	70.51	<0.5	0.054	0.08
10/12	214.0	230.0	15.7						138	158	138	158	58.18	73.52	70.01	<0.5	0.056	0.08
11/12	230.0	248.0	15.2	37.0	47.0	MAGNETITE (MEDIUM)			158	178	158	178	56.73	73.20	69.44	<0.5	0.055	0.105
13/12	248.0	263.0	11.5			Fine - medium grain, massive, moderately to strongly magnetic, only slightly oxidised with limonite stained tremolite - actinolite and talcose veinlets and blebs 37.0 - 42.3 together with minor pyrite. Sheared puggy actinolite rich amphibolite zone 42.3 - 45.0 and soft puggy and friable magnetite zone 45.0 - 47.0. Delta Angle of Magnetite - Amphibolite contact = 25°.			178	195	178	195	54.22	68.88	69.76	<0.5	0.052	0.135
									195	211	195	211	60.38	75.78	70.57	<0.5	0.059	0.175
									211	217	211	217	(Amph)					
									217	232	217	232	50.99	64.40	69.60	0.59	0.060	0.225
									232	247	232	247	52.12	64.22	69.93	<0.5	0.062	0.295
									247	263	247	263	59.00	73.60	70.09	<0.5	0.055	0.345
									263		263							
									END.									
				47.0	78.0	AMPHIBOLITE												
						Fairly fine grained, fairly massive, only slightly oxidised with brown limonite film along fracture planes. - Moderately soft with some puggy zones throughout, light green in colour, generally fairly altered with minor epidote and quartzofeldspathic veinlets throughout. Spotted appearance 52.0 - 68.0 with magnetite and actinolite grains disseminated throughout.												

No Core hold.

Scale 1" = 50'



LEGEND.					
RICH	>55%Fe	(Red)	MEDIUM LEAN	>22%Fe	(Green)
MEDIUM RICH	>44%Fe	(Red with diagonal lines)	LEAN	>11%Fe	(Green with diagonal lines)
MEDIUM	>33%Fe	(Red with horizontal lines)	AMPHIBOLITE	<11%Fe	(Green)
				ZONE OF OXIDATION	(Circles)

