

DIAMOND DRILL CORE RECORD

Hole No. 239
 Drilled by GLINDEMANN & KITCHING
 Core Recovery 71%
 Geological Logging by —
T. MUNRO

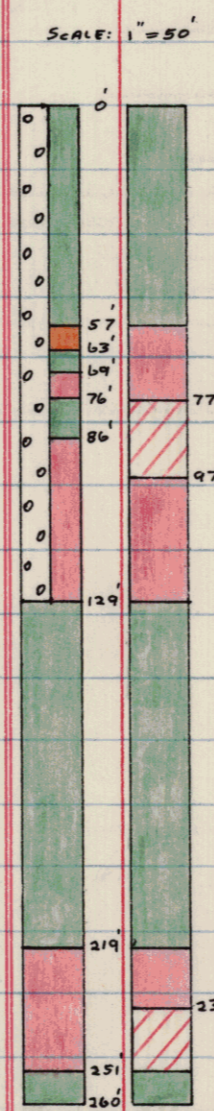
Area of Operation SAVAGE RIVER, TAS.
 Location of Site 21501 N ; 20608 E
 Date Commenced 30 - 7 - 1966
 Date Completed 12 - 8 - 1966

Reduced Level of Site 1017.7
 Bearing of Hole 270°
 Dip of Hole 0° ; 120' ; 260'
-55° ; -60° ; -54°30'
 Bore Depth 260.0' 42 170

AMG Co-ords: 351080E 540754N.

Ref N° 2135

DRILL RECORD				GEOLOGICAL LOG			GEOLOGICAL SECTION		ASSAY RESULTS <i>No Core held.</i>									
Date	From	To	Core Recov.	From	To	Description	Core	Sample	Sample No.	From Ft.	To Ft.	CRUDE % Fe % S	CONCENTRATE (-325 Mesh)					
													% Fe	% SiO ₂	% Ni	% TiO ₂	% V	
30/7	0.0	30.5	24.7	0.0	57.0	AMPHIBOLITE			0	57		(Amph)						
31/7	30.5	43.5	12.8			Fairly massive, fine-grained amphibolite			57	77		58.11 1.39	19.38	68.51	0.53	0.044	0.11	0.43
1/8	43.5	78.5	29.0			clay. Light brown color with abundant fracture			77	97		51.00 0.48	36.28	68.67	0.55	0.052	0.29	0.39
2/8	78.5	113.8	26.6			planes coated with a black, oxidised iron-			97	117		60.25 1.14	28.71	68.57	0.41	0.053	0.26	0.44
3/8	113.8	129.2	8.1			rich mineral.			117	129		57.26 2.68	32.10	68.41	0.30	0.041	0.23	0.43
4/8	129.2	152.0	8.1	57.0	63.0	MAGNETITE (MEDIUM)			129	219		(Amph)						
5/8	152.0	163.0	10.5			Quite oxidised, broken with clay, limonite			219	235		60.52 3.41	77.43	71.15	0.30	0.030	0.22	0.35
8/8	163.0	171.0	7.5			and hematite - rich ore separating more			235	251		53.28 5.36	66.23	69.86	0.69	0.040	0.42	0.32
9/8	171.0	184.0	11.0			massive fine-grained oxidised magnetite.			251	260		(Amph.)						
10/8	184.0	197.7	10.7			Has leached joints and a pitted surface.												
11/8	197.7	237.0	27.0			Talc at 57.0.												
12/8	237.0	260.0	8.2	63.0	69.0	AMPHIBOLITE												
	END OF HOLE					Massive in parts, fine-grained amphibolite												
				69.0	76.0	MAGNETITE (RICH)												
						Fairly fine-grained, massive and moderately												
						oxidised with moderate amounts of pyrite.												
						Many leached joints and voids and secondary												
						limonitic minerals. Reddish-brown hematite												
						abundant. Weakly to moderately magnetic.												
				76.0	86.0	AMPHIBOLITE												
						Fairly massive, fine-grained, light-brown												
						amphibolite clay. Oxidised black mineral												
						on fracture planes.												



LEGEND			
RICH	> 55% Fe	MEDIUM LEAN	> 22% Fe
MEDIUM RICH	> 44% Fe	LEAN	> 11% Fe
MEDIUM	> 33% Fe	AMPHIBOLITE	< 11% Fe
ZONE OF OXIDATION			

DRILL RECORD				GEOLOGICAL LOG			GEOLOGICAL SECTION		ASSAY RESULTS														
Date	From	To	Core Recov.	From	To	Description	Core	Sample	Sample No.	From	To												
				86.0	129.0	<u>MAGNETITE (RICH)</u> Fairly fine-grained, fairly massive, moderately oxidised with leached joints and large voids. Hematite present and minor pyrite. Limonite on fractures. Minor talc blebs with pyrite at 109 (Delta Angle Alignment = 40°). Patches of clay, and some minor disaggregated zones throughout.																	
				129.0	152.0	<u>AMPHIBOLITE</u> Medium to coarse grained, slightly oxidised with many decomposed patches. Coarse grained variety contains about 40% feldspar laths and 60% blue-green amphibole with minor pockets and patches of limonitic material.																	
				152.0	219.0	<u>AMPHIBOLITE</u> From 152.0 to 187.0 medium to coarse-grained, quite oxidised and decomposed with minor disseminated magnetite. Soft limonite on fractures. From 187.0 to 206.0 fine-grained, hard and massive, relatively unoxidised with limonite and hematite on fracture planes. Small irregular pyrite = epidote stringers 205.0 - 206.0. From 206.0 to 219.0 medium-grained, massive. sharp planar contact at 206.0 (Delta Angle = 35°).																	
				219.0	237.0	<u>MAGNETITE (RICH)</u> Fairly fine-grained, slightly oxidised with minor pyrite and minor patches and blebs of clay and limonite some intergranular leaching. Limonite and tremolite = actinolite clay on fracture planes.																	

42 171

DRILL RECORD				GEOLOGICAL LOG			GEOLOGICAL SECTION		ASSAY RESULTS													
Date	From	To	Core Recov.	From	To	Description	Core	Sample	Sample No.	From	To											
				237.0	251.0	<u>MAGNETITE (RICH)</u> Fine to medium grained, slightly oxidized with moderate pyrite and tremolite in lbs and stringers (Delta Angle Alignment = 0°) Limonite on fractures. Leaching along lamination at 250. Delta Angle 248 - 251 = 20°. rite - rich zone 250 - 251.																
				251.0	260.0	<u>AMPHIBOLITE</u> Fairly fine-grained, very broken, decomposed to pyritic clay 251 - 254. Limonite on fracture planes. Slightly oxidised.																
						<u>END OF HOLE</u>																

42 172