

# DIAMOND DRILL CORE RECORD

Hole No. 240  
 Drilled by GLINDEMANN & KITCHING  
 Core Recovery 56%  
 Geological Logging by —  
T. MUNRO

Area of Operation SAVAGE RIVER TAS.  
 Location of Site 21473 N ; 20316 E  
 Date Commenced 30 - 7 - 1966  
 Date Completed 9 - 8 - 1966

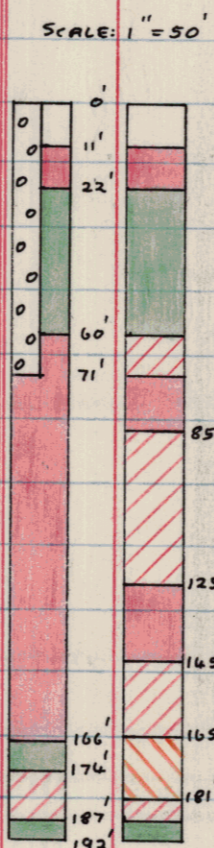
Reduced Level of Site 908.9  
 Bearing of Hole 270°  
 Dip of Hole 0° 100° 196°  
-55° -58° -57°30'  
 Bore Depth 197.0

42 174

AMG Co-ords: 350992 E 5404754 N.

Ref No 2136

DRILL RECORD				GEOLOGICAL LOG			GEOLOGICAL SECTION		ASSAY RESULTS									
Date	From	To	Core Recov.	From	To	Description	Core	Sample	Sample No.	From- To Ft.	Y % Fe	To % S	CRUDE % Wt.	CONCENTRATE -325 Mesh				
													% Fe	% SiO <sub>2</sub>	% Ni	% TiO <sub>2</sub>	% V	
30/7	0.0	25.7	11.5	0.0	11.0	OVERBURDEN.			0	11	Overburden							
31/7	25.7	54.5	13.2			Ironstone scree and amphibolite clay.			11	22	59.88	0.09	65.42	69.62	0.57	0.026	0.11	0.16
1/8	54.5	77.2	19.9			Possibly in situ 10.0 - 11.0.			22	60	Amph.							
2/8	77.2	96.5	6.1	11.0	22.0	MAGNETITE (RICH)			60	71	52.31	0.22	23.15	67.61	0.45	0.059	0.14	0.45
3/8	96.5	137.0	24.7			Quite oxidised, fairly massive, fairly			71	85	61.65	4.79	77.36	70.34	0.32	0.050	0.17	0.48
4/8	137.0	142.0	3.9			fine-grained and containing blebs and stringers			85	105	52.15	6.13	63.07	70.58	0.59	0.055	0.16	0.40
5/8	142.0	146.1	3.9			of clayey decomposed amphibole. Moderately			105	125	53.12	4.95	65.89	70.91	0.64	0.056	0.39	0.42
5/8	146.1	167.0	10.5			magnetic with hematite present in patches.			125	145	60.51	5.95	75.12	70.50	0.57	0.049	0.45	0.41
3/8	167.0	176.5	8.0			Clay and limonite on fractures. Little			145	165	52.40	4.01	65.98	70.99	0.51	0.048	0.29	0.38
1/8	176.5	197.0	8.4			pyrite.			165	181	30.58	3.93	31.32	70.99	0.77	0.061	0.27	0.33
	<u>END OF HOLE</u>			22.0	60.0	AMPHIBOLITE			181	187	45.80	6.55	53.70	70.99	0.58	0.056	0.27	0.32
						From 22.0 - 44.0, quite oxidised,			187	192	Amph.							
						partly massive homogenous brown plastic												
						clay.												
						From 44.0 - 60.0, brown clayey												
						decomposed amphibolite with minor												
						indeterminate oxidised and extremely												
						broken ore zones. Limonite and clay on												
						fracture planes.												
				60.0	142.0	MAGNETITE (RICH)												
						From 60.0 to 71.0, fine grained,												
						moderately oxidised, large voids and leached												
						joints with clay seams and secondary												
						limonite. Disaggregated in parts. Hematite												
						abundant in patches. Amphibolite zone 64.0 -												
						68.0.												
						From 71.0 to 98.0 slightly oxidised,												



LEGEND			
RICH	>	55% Fe	MEDIUM LEAN > 22% Fe
MEDIUM RICH	>	44% Fe	LEAN > 11% Fe
MEDIUM	>	33% Fe	AMPHIBOLITE < 11% Fe
			ZONE OF OXIDATION



