

710 Q43

DIAMOND DRILL CORE RECORD

Hole No. 242
 Drilled by GLINDEMANN & KITCHING
 Core Recovery 71%
 Geological Logging by —
T. MUNRO

Area of Operation SAVAGE RIVER, TAS.
 Location of Site 21065 N 20270 E
 Date Commenced 17 - 8 - 1966
 Date Completed 31 - 8 - 1966

Reduced Level of Site 953.5
 Bearing of Hole 90°
 Dip of Hole 0° 120° 240°
-45° -46° -45°30'
 Bore Depth 300.0

42 181

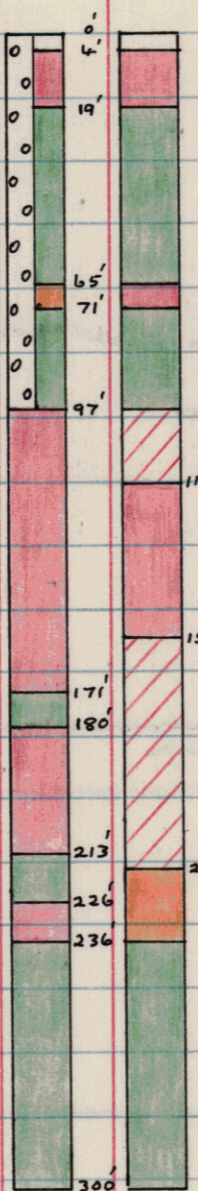
Ref No 2138

AMG G-ords: 350 977 E 5404621 N.

A 24092

DRILL RECORD				GEOLOGICAL LOG			GEOLOGICAL SECTION		ASSAY RESULTS <i>No Core held.</i>										
Date	From	To	Core Recov.	From	To	Description	Core	Sample	Sample No. From Ft.	To Ft.	CRUDE % Fe	% S	CONCENTRATE % Wt	% Fe	% SiO ₂	Mesh % Ni	% TiO ₂	% V	
17/8	0.0	24.8	22.3	0.0	4.0	<u>OVERBURDEN</u>			0	4	Overburden								
18/8	24.8	46.0	18.3			Amphibolite and ironstone talus.			4	19	62.46	0.12	54.73	69.78	0.38	0.038	0.10	0.33	
19/8	46.0	68.7	21.6	4.0	19.0	<u>MAGNETITE (RICH)</u>			19	65	Amph								
20/8	68.7	74.8	5.2			Fairly fine-grained, moderately oxidised, massive in parts, leached, with limonitic and broken clayey zones and containing fair amounts of hematite.			65	71	55.62	0.14	68.06	70.41	0.38	0.054	0.16	0.40	
22/8	74.8	90.0	13.5			Blebs and pods of amphibole have been weathered to clay leaching along foliation (Delta Angle Foliation = 50°). Weakly to strongly magnetic.			71	97	Amph.								
23/8	90.0	136.0	27.7						97	117	54.65	5.82	67.99	70.73	0.39	0.041	0.10	0.34	
24/8	136.0	176.0	19.8						117	137	55.46	6.16	69.42	70.33	0.39	0.038	0.10	0.31	
25/8	176.0	180.0	0.8						137	157	58.43	4.46	75.69	70.41	0.34	0.040	0.20	0.36	
26/8	180.0	214.0	23.3						157	177	54.33	4.00	70.23	70.41	0.30	0.036	0.17	0.35	
27/8	214.0	226.6	9.9						177	197	51.44	5.50	64.41	69.92	0.57	0.043	0.12	0.30	
29/8	226.6	248.5	17.8						197	217	47.26	3.64	58.93	70.57	0.72	0.041	0.10	0.35	
30/8	248.5	278.0	21.3	19.0	46.0	<u>AMPHIBOLITE</u>			217	236	39.30	3.62	44.85	70.73	0.69	0.040	0.22	0.37	
31/8	278.0	300.0	10.5			Fine-grained, originally massive amphibolite clay with black oxidised mineral on fracture planes. Minor, hard fresh zones at 43 and 44.			236	300	Amph.								
						<u>END OF HOLE</u>													
				46.0	65.0	<u>AMPHIBOLITE</u>													
						From 46.0 to 60.0 quite oxidised, decomposed amphibolite clay, originally massive with black oxidised film and limonite on fracture planes. Fairly fine grain.													
						From 60.0 to 65.0 amphibolite is slightly to moderately oxidised, fine-grained, hard with black oxidised film on fractures.													
				65.0	71.0	<u>MAGNETITE (MEDIUM)</u>													
						Fine-grained, quite oxidised, broken													

SCALE: 1" = 50'



LEGEND

RICH > 55%Fe	MEDIUM LEAN > 22%Fe
MEDIUM RICH > 44%Fe	LEAN > 11%Fe
MEDIUM > 33%Fe	AMPHIBOLITE < 11%Fe
ZONE OF OXIDATION	

