

DIAMOND DRILL CORE RECORD

Hole No. 244
 Drilled by GLINDEMANN & KITCHING
 Core Recovery 58%
 Geological Logging by —
T. MUNRO

Area of Operation SAVAGE RIVER, TAS
 Location of Site 21356 N ; 20352 E
 Date Commenced 4 - 9 - 1966
 Date Completed 21 - 9 - 1966

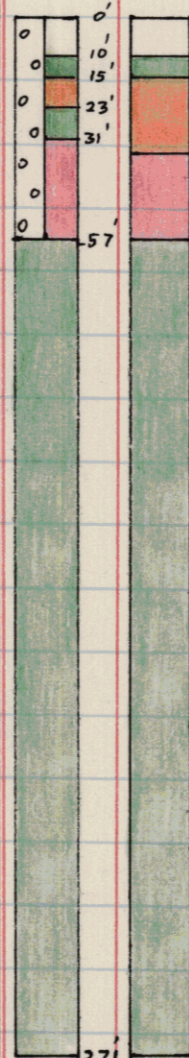
Reduced Level of Site 923.5
 Bearing of Hole 90°
 Dip of Hole 0° 100' 200'
-45° -44° 30' -45°
 Bore Depth 271.0

42 190

AMG Co-ords: 351003 E 5404700 N.

Ref No 2140 ..

DRILL RECORD				GEOLOGICAL LOG			GEOLOGICAL SECTION		ASSAY RESULTS <i>No core held</i>									
Date	From	To	Core Recov.	From	To	Description	Core	Sample	Sample No.	From	To	CRUDE	CONCENTRATE -325 Mesh					
									From Ft.	To Ft.	% Fe	% S	% Wt.	% Fe	% SiO ₂	% Ni	% TiO ₂	% V
1966																		
4/9	0.0	20.3	8.6	0.0	10.0	OVERBURDEN			0	10	Overburden							
5/9	20.3	42.2	20.0			Amphibolite clay with ironstone pebbles.			10	15	Amph.							
6/9	42.2	49.9	6.9	10.0	15.0	AMPHIBOLITE			15	35	39.54	0.05	29.03	69.20	0.67	0.034	0.10	0.35
7/9	49.9	60.5	4.9			Quite oxidised, broken clay with			35	46	66.16	Nil	71.60	69.96	0.20	0.032	0.10	0.33
8/9	60.5	83.0	16.2			moderate amounts of disseminated magnetite.			46	57	64.46	0.03	44.33	70.12	0.12	0.023	0.10	0.16
13/9	83.0	90.0	7.0	15.0	23.0	MAGNETITE (MEDIUM)			57	271	Amph.							
14/9	90.0	120.5	18.7			Fairly fine-grained, generally												
15/9	120.5	162.0	22.4			broken, moderately oxidised with amphibole												
16/9	162.0	190.7	16.4			blebs and stringers decomposed to clay.												
17/9	190.7	211.5	10.6			Amphibolite clay zone 19 - 21. Clay and												
19/9	211.5	221.8	2.5			limonite on fracture planes.												
20/9	221.8	235.0	4.0	23.0	31.0	AMPHIBOLITE												
21/9	235.0	271.0	19.5			Fairly fine-grained, moderately												
						oxidised, light green to brown with black												
						oxidised material on fractures. Quite												
						broken.												
				31.0	57.0	MAGNETITE (RICH)												
						Fairly fine-grained, generally broken												
						except for massive zone 47.0 - 57.0,												
						moderately oxidised with moderate amounts												
						of clay and hematite. Abundant voids.												
						Limonite on fractures, cave-ins numerous.												
				57.0	83.0	AMPHIBOLITE												
						From 57.0 to 72.0 amphibolite is												
						decomposed to a light brown broken friable												
						clay. Limonite and black oxidised material												
						on fracture planes.												



LEGEND					
RICH	>	55% Fe	MEDIUM LEAN >	22% Fe	
MEDIUM RICH	>	44% Fe	LEAN	>	11% Fe
MEDIUM	>	33% Fe	AMPHIBOLITE	<	11% Fe
ZONE OF OXIDATION					

