

# DIAMOND DRILL CORE RECORD

721 Q43

Hole No. 246  
 Drilled by GLINDEMANN & KITCHING  
 Core Recovery 73%  
 Geological Logging by —  
T. MUNRO

Area of Operation SAVAGE RIVER, TAS.  
 Location of Site 24129 N ; 21310 E  
 Date Commenced 27 - 9 - 1966  
 Date Completed 10 - 10 - 1966

Reduced Level of Site 988.8  
 Bearing of Hole 270°  
 Dip of Hole 0° -45° 120° -47° 240° -48°30'  
 Bore Depth 301.0

42 196

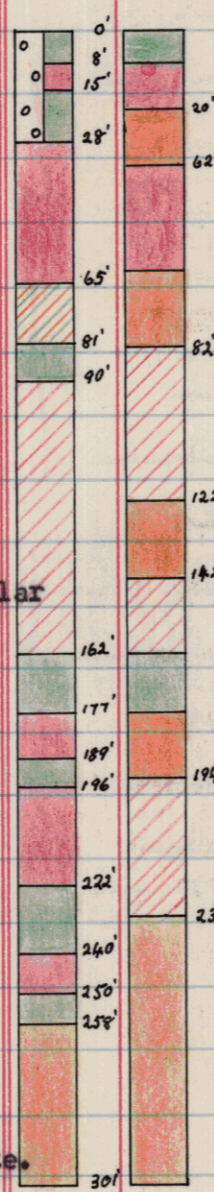
Rj No 2142

AMG Co-ords: 351115 E 5405200 N.

A 24092

DRILL RECORD				GEOLOGICAL LOG			GEOLOGICAL SECTION		ASSAY RESULTS <i>No Core held.</i>										
Date	From	To	Core Recov.	From	To	Description	Core	Sample	Sample From Ft.	Sample To Ft.	CRUDE % Fe	% S	% Wt.	% Fe	% SiO <sub>2</sub>	% Ni	% TiO <sub>2</sub>	% V	
27/9	0.0	23.6	16.2	0.0	8.0	<u>AMPHIBOLITE.</u>			0	8	Amph.								
28/9	23.6	50.3	23.3			Friable fine-grained clay.			8	20	56.24	3.63	68.30	70.83	0.44	0.045	0.45	0.38	
29/9	50.3	81.0	19.5	8.0	15.0	<u>MAGNETITE (RICH)</u>			20	35	34.85	2.47	35.71	69.86	0.59	0.053	0.47	0.38	
30/9	81.0	114.5	16.6			Fine to medium-grained, slightly oxidised,			35	50	60.95	5.12	77.83	69.70	0.43	0.048	0.53	0.44	
1/10	114.5	155.2	25.8			massive in parts with moderate amounts of			50	62	59.81	5.93	75.63	69.94	0.47	0.050	0.58	0.52	
4/10	155.2	171.3	12.7			oxidised amphibolite clay. Limonite on			62	82	38.58	4.99	45.98	69.62	0.81	0.048	0.53	0.39	
5/10	171.3	211.3	28.3			fracture planes.			82	102	54.14	3.23	71.10	70.18	0.53	0.039	0.64	0.44	
6/10	211.3	240.0	20.6	15.0	28.0	<u>AMPHIBOLITE</u>			102	122	48.65	7.11	59.51	69.11	0.74	0.107	0.40	0.44	
7/10	240.0	255.4	11.3			Pale, moderately oxidised amphibolite clay.			122	142	41.40	5.88	49.49	69.60	1.11	0.087	0.37	0.42	
8/10	255.4	268.1	12.6			Broken, with minor magnetite.			142	162	48.74	4.38	63.64	68.62	1.30	0.073	0.33	0.43	
10/10	268.1	301.0	31.6	28.0	65.0	<u>MAGNETITE (RICH)</u>			162	177	Amph.								
						Massive, slightly oxidised with moderate			177	194	42.79	3.81	52.05	70.50	0.63	0.059	0.14	0.50	
						amounts of white - coloured tremolite -			194	210	50.37	3.70	66.28	69.44	0.53	0.055	0.28	0.47	
						actinolite and pyrite with vague and irregular			210	230	46.70	3.95	58.28	70.09	0.56	0.051	0.37	0.43	
						alignment.			230	250	38.06	2.70	45.22	70.74	0.62	0.044	0.24	0.44	
				65.0	81.0	<u>MAGNETITE (LEAN)</u>			250	270	42.22	4.38	49.72	71.07	0.53	0.056	0.16	0.47	
						Irregular bands and disseminated magnetite			270	285	38.79	6.49	41.40	70.74	0.57	0.034	0.16	0.49	
						in fine-grained host rock. Low grade,			285	301	36.10	3.13	42.75	68.95	0.61	0.055	0.16	0.46	
						fairly broken. Clay zone 71.2 - 71.7.													
				81.0	90.0	<u>AMPHIBOLITE</u>													
						Pale greenish brown moderately oxidised,													
						fairly fine-grained and broken. Clay													
						88.0 - 90.0 with some disseminated magnetite.													
				90.0	162.0	<u>MAGNETITE (MEDIUM-RICH)</u>													
						Fairly fine-grained, massive in parts with													
						fair amounts of pale tremolite - actinolite													
						and moderate pyrite in blebs, bands and													

SCALE: 1" = 50'



RICH	>	55%Fe	MEDIUM LEAN	>	22%Fe
MEDIUM RICH	>	44%Fe	LEAN	>	11%Fe
MEDIUM	>	33%Fe	AMPHIBOLITE	<	11%Fe
ZONE OF OXIDATION					



