

DIAMOND DRILL CORE RECORD

746 Q43

41 024

Hole No. 257
 Drilled by GLINDEMANN & KITCHING
 Core Recovery 81%
 Geological Logging by —
T. MUNRO

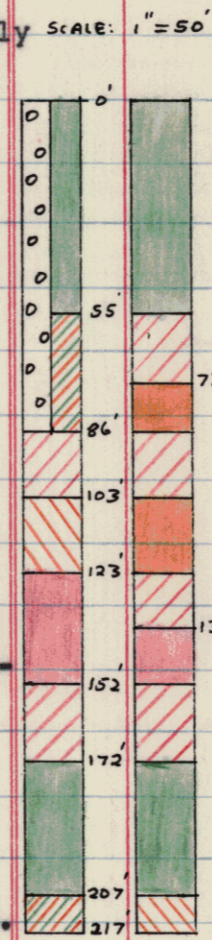
Area of Operation SAVAGE RIVER, TAS.
 Location of Site 17585 N ; 19169 E
 Date Commenced 3 - 2 - 1967
 Date Completed 9 - 2 - 1967

Reduced Level of Site 951.60
 Bearing of Hole 270°
 Dip of Hole 0° 80° 160°
-45° -44° -44° 30'
 Bore Depth 217.0

General AMG Co-ords: 351000E 5405000N Bore not plotted.

Ref N° 2153

DRILL RECORD				GEOLOGICAL LOG			GEOLOGICAL SECTION		ASSAY RESULTS									
Date	From	To	Core Recov.	From	To	Description	Core	Sample	Sample No.	From	To	CRUDE	CONCENTRATE - 325 Mesh					
									From Ft.	To Ft.	% Fe	% S	% Wt.	% Fe	% SiO ₂	% Ni	% TiO ₂	% V
3/2	0.0	21.5	18.4	0.0	55.0	<u>AMPHIBOLITE CLAY</u>			0	55	Amph.							
4/2	21.5	77.5	50.1			Fine-grained, light brown, friable clay with			55	73	47.01	1.71	47.78	69.78	0.50	0.016	0.08	0.43
6/2	77.5	130.5	47.0			black oxidised film on fracture planes.			73	86	41.58	0.75	43.26	69.86	0.91	0.017	0.14	0.43
7/2	130.5	193.0	42.4			Quite sheared, chloritic 42.0 - 55.0.			86	103	52.92	3.69	66.62	70.75	0.33	0.017	0.16	0.46
8/2	193.0	208.2	13.3	55.0	86.0	<u>MAGNETITE (LEAN)</u>			103	123	37.20	3.38	42.60	70.83	0.56	0.017	0.24	0.44
9/2	208.2	217.0	4.7			From 55.0 to 63.0 massive rich ore, moderately oxidised with limonite and hematite.			123	137	52.84	6.59	63.94	70.67	0.50	0.18	0.47	0.43
						From 63.0 to 73.0 brown amphibolite clay.			137	152	57.70	6.92	69.72	70.83	0.54	0.018	0.63	0.41
						From 73.0 to 86.0 broken, quite oxidised medium-lean ore with alternating rich and barren phases.			152	172	47.01	3.72	59.89	69.86	0.64	0.044	1.15	0.35
									172	207	Amph.							
									207	217	30.72	5.06	31.74	69.78	1.10	0.055	0.74	0.33
				86.0	103.0	<u>MAGNETITE (MEDIUM-RICH)</u>												
						Medium-grained, massive with sugary texture containing moderate amphibole and pyrite with a tendency to Alignment in places (Delta Angle = 80°). Amphibolite zone 96.0 - 99.0.												
				103.0	123.0	<u>MAGNETITE (MEDIUM - LEAN)</u>												
						Broken, soft, sheared and chloritic barren zones alternating with harder rich magnetite.												
				123.0	152.0	<u>MAGNETITE (RICH)</u>												
						Fairly fine-grained with moderate pyrite and amphibole. Broken, soft and chloritic 123.0 - 126.0, otherwise fairly massive.												
				152.0	172.0	<u>MAGNETITE (MEDIUM - RICH)</u>												
						Medium-grained with moderate talc, pyrite and serpentine.												



LEGEND			
RICH	>	55% Fe	MEDIUM LEAN > 22% Fe
MEDIUM RICH	>	44% Fe	LEAN > 11% Fe
MEDIUM	>	33% Fe	AMPHIBOLITE < 11% Fe
			ZONE OF OXIDATION

