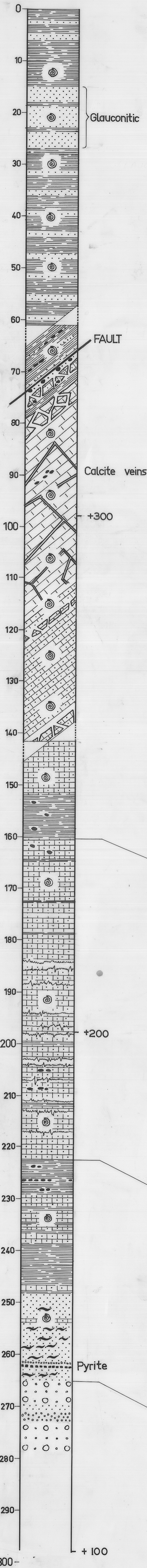
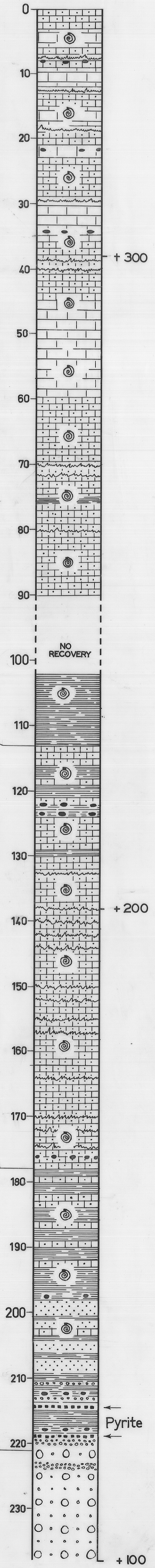


5 cm

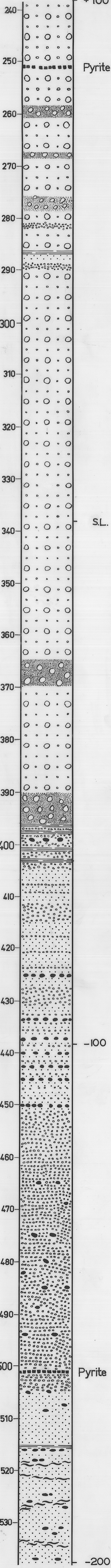
DDH. 2



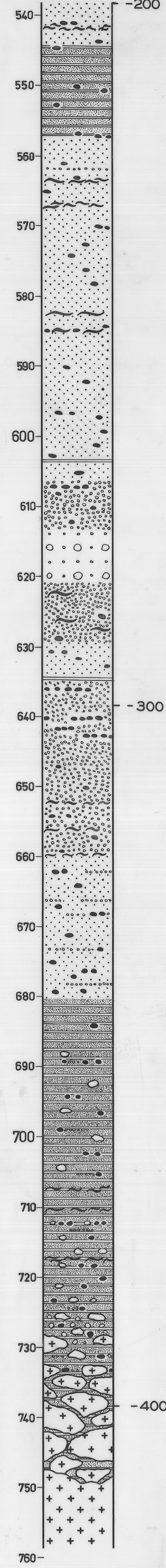
DDH. 1



D.D.H. 1 (cont.)

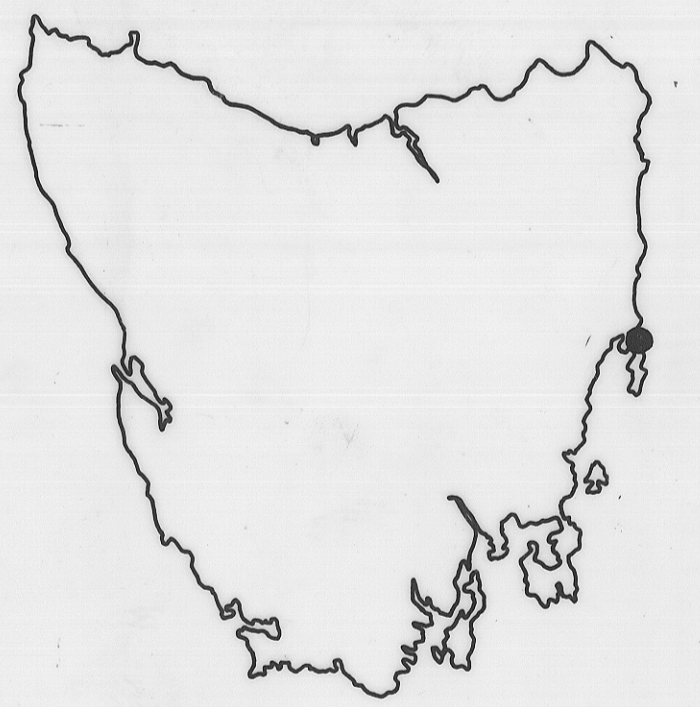


D.D.H. 1 (cont.)



- SILT-SHALE-MUDSTONE ETC.
- SANDSTONE
- FRAGMENTAL LIMESTONE
- FRAGMENTAL LIMESTONE BRECCIA
- LIME MUDSTONE
- ARKOSIC GRIT
- COARSE CONGLOMERATE WITH ARKOSIC GRIT BASE
- LESS COARSE CONGLOMERATE WITH SAND BASE
- POORLY SORTED GREYWACKE SANDSTONE
- FOSSILS
- PEBBLES (DISPERSED)
- PEBBLE BANDS
- GRIT BANDS
- PYRITE ZONES
- STYLOLITES
- IMPERSISTANT MUDDY PARTINGS
- BIG GRANITE BOULDERS
- GRANITE

LOCALITY MAP



DEPARTMENT OF MINES — TASMANIA	
LITHOLOGICAL SECTIONS	
CASCADE GROUP — DDH. 1 & DDH. 2	
FRIENDLY BEACHES	
DATE	JANUARY 1969
GEOLOGIST	D.J. JENNINGS
DRAUGHTSMAN	T.R. BELLIS
REVISIONS	
VERTICAL SCALE OF FEET	
0 10 20 30	
MAP SHEET & N° SWANSEA 63	
FILE N°	
3233	

Fig. 28

Reduce to 1/6"