

Ref No 2509 201

DEPARTMENT OF MINES-TASMANIA

1 0011

61951 M5614

Churn Drill Log

4

Area: *Thureau Level* Hole No. *39* Line No. *5* Grid Reference *2010 General*
AM6 603000 E 5425000 N.

Crew *HN Harper* Date *15/3/63* Clean up by *J. Watt* *1.4.63* Shoe Diameter *7 3/8* " Factor *.2468* cu. ft. per ft. *No Core held.*

Section Feet		Volume, Cu. ft.			+ # %	Colours of Gold	Jig Tails	Cassiterite		Value lb. p.c.y.	Formation	Remarks
From	To	Theoretical	Bucket	Jig				Actual	Adj.			
0	175	53.690	64.895									
175	180		<i>8 1/8</i> 1.787								<i>From 176 Granite</i>	
		55.224	66.682									
								Assay %	<i>Nil</i>	Adjusted to 70% Sn.		

Samples = 0 Total = 11.

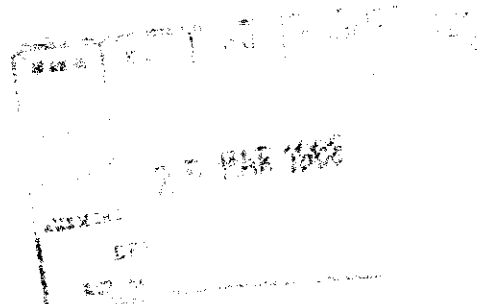
1 0012

DEPARTMENT OF MINES-TASMANIA

61951 M5614

Churn Drill Log

Area: *Thureau Lead* Hole No. 39 Line No. 5 Grid Reference 2010



Crew *NIA Harper* Date *12/3/63* Clean up by *J. Watt* 12/3/63 Shoe Diameter *9 1/8* " Factor *2968* cu. ft. per ft.
Dorset Tin

Section Feet		Volume, Cu. ft.			+ # %	Colours of Gold	Jig Tails	Cassiterite		Value lb. p.c.y.	Formation	Remarks
From	To	Theoretical	Bucket	Jig				Actual	Adj.			
0	140	42.952	52.026									<i>Pyrite Qty Ilmenite</i>
140	145		<i>4 3/4</i> 1.045			<i>114 gram</i>					<i>Gravel. Angular & WW stone</i>	<i>Pyrite Qty</i>
145	150		9 1.980			<i>1370 gr</i>					<i>"</i>	<i>Pyrite Qty.</i>
150	155		<i>7 1/4</i> 1.595			<i>1877 gr</i>					<i>"</i>	<i>"</i>
155	160		<i>8 1/2</i> 1.870								<i>"</i>	<i>Pyrite Ilmenite Qty</i>
160	165		<i>10 3/8</i> 2.282			<i>297 gr</i>					<i>"</i>	<i>Pyrite Qty</i>
165	170		<i>7 3/8</i> 1.622			<i>2965 gr</i>					<i>Gravel & Wood</i>	<i>Pyrite Qty</i>
170	175		<i>11 1/2</i> 2.475			<i>2322 gr.</i>					<i>" "</i>	<i>Pyrite Qty</i>
		53.690	64.895									
								Assay	%	Adjusted to 70% Sn.		

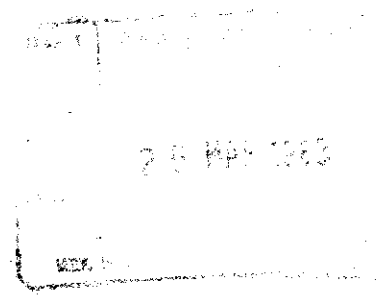
s Samples 6 plus 5 = 11.

1 0013

DEPARTMENT OF MINES-TASMANIA

61951 M5814

Churn Drill Log



Area: *Thureau Lead* Hole No. 39 Line No. 5 Grid Reference *2 010*

Crew *N/A Harper* Date *15-3-63* Clean up by *J. Watt* 12/3/63 Shoe Diameter *3 1/8"* Factor *12968* cu. ft. per ft.
Dorset Tin

Section Feet		Volume, Cu. ft.			+ %	Colours of Gold	Jig Tails	Cassiterite		Value lb. p.c.y.	Formation	Remarks
From	To	Theoretical	Bucket	Jig				Actual	Adj.			
0	70	21.476	21.860									
70	75		8 1/2 1.870	85"			385 gram				Black Gravelly Clay	Qty Pyrite rock fragments
75	80		7 5/8 1.677	89"							"	"
80	85		20 1/4 4.455	83"							Sticky Black Clay	
85	90		18 3.960	87"							"	"
90	95		9 1/2 2.090	84"							"	"
95	100		2 5/8 .577	88"			146 gr				Gravelly Drift	Qty Pyrite rock fragments
100	105		12 2.640	86"							"	"
105	110		15 3.300	91'							Clay	
110	115		10 1/2 2.310	93								
115	120		8 1.760	90'								
120	125		8 5/8 1.897	68"			29 gr.				Clayey Gravel from 112'	Qty Siliceous Pyrite
125	130		2 1/2 .550								Gravel with angular or water worn stones	Pyrite Qty Siliceous
130	135		6 1/4 1.375				289 gr					Pyrite Qty Siliceous
135	140		7 3/4 1.705				135 gr					Pyrite Qty Siliceous
		42.952	52.026									
								Assay %	<i>Nil</i>		Adjusted to 70% Sn.	

s Samples = 5 plus 0 = 5

Bored below casing from 125'

2509
224

1 0014

DEPARTMENT OF MINES-TASMANIA

61951 M5614

Churn Drill Log

25 MAR 1963

Area: *Thureau Lead*

Hole No. 39 Line No. 5 Grid Reference *zero*

1440/63

Crew *MR Harper* Date

Clean up by *J. Watt* *5.3.63*
Dorset Tin

Shoe Diameter *7 3/8* " Factor *.2968* cu. ft. per ft.

Section Feet		Volume, Cu. ft.			+ # %	Colours of Gold	Jig Tails	Cassiterite		Value lb. p.c.y.	Formation	Remarks
From	To	Theoretical	Bucket	Jig				Actual	Adj.			
0	5		4 1/2 .990								<i>0-3 Black soil</i>	
5	10		6 1.320								<i>Clayey Gravel</i>	
10	15		3 3/8 .742	<i>59"</i>							" "	
15	20		6 7/8 1.512	<i>61"</i>							" "	
20	25		4 3/8 .962	<i>68"</i>							" "	
25	30		7 1.540	<i>65"</i>							" "	
30	35		9 3/8 2.062	<i>68"</i>							<i>Clay</i>	
35	40		8 3/4 1.925	<i>76"</i>							"	
40	45		6 5/8 1.457	<i>72"</i>							<i>Black Silty Clay</i>	
45	50		8 1.760	<i>79"</i>							" "	
50	55		8 1/4 1.815	<i>94"</i>							" "	
55	60		10 2.200	<i>88"</i>							" "	
60	65		9 1/4 2.035	<i>91"</i>							" "	
65	70		7 1.540	<i>87"</i>							" "	
			21.476	21.860								
								Assay	%	Adjusted to 70% Sn.		

Samples = 0