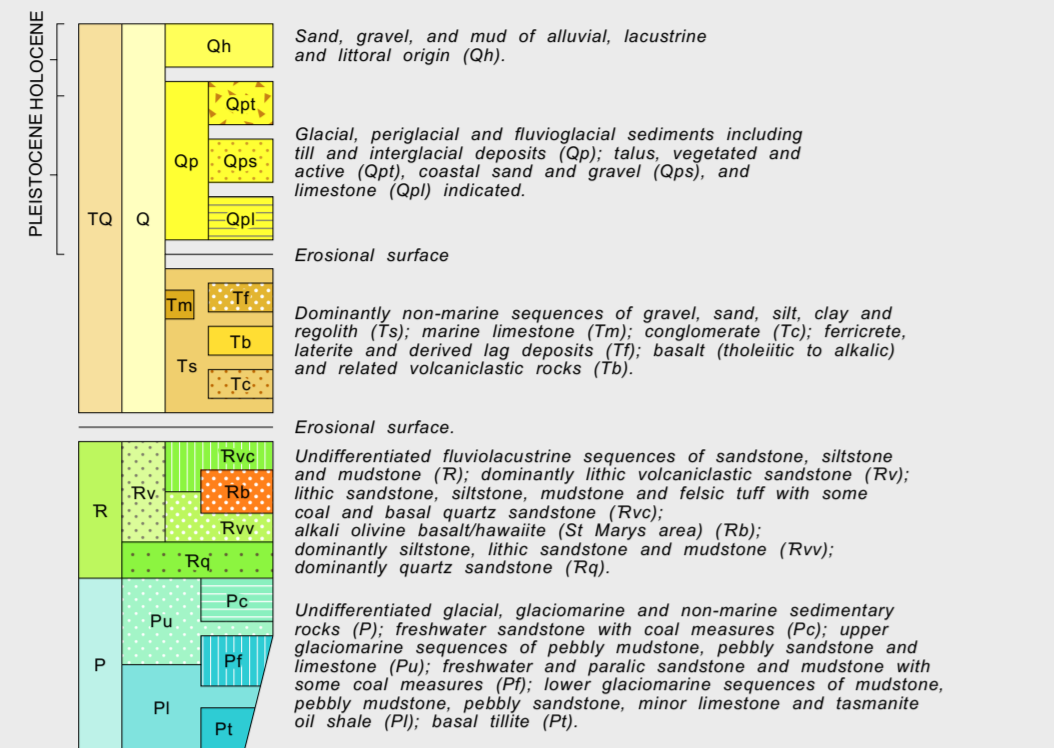


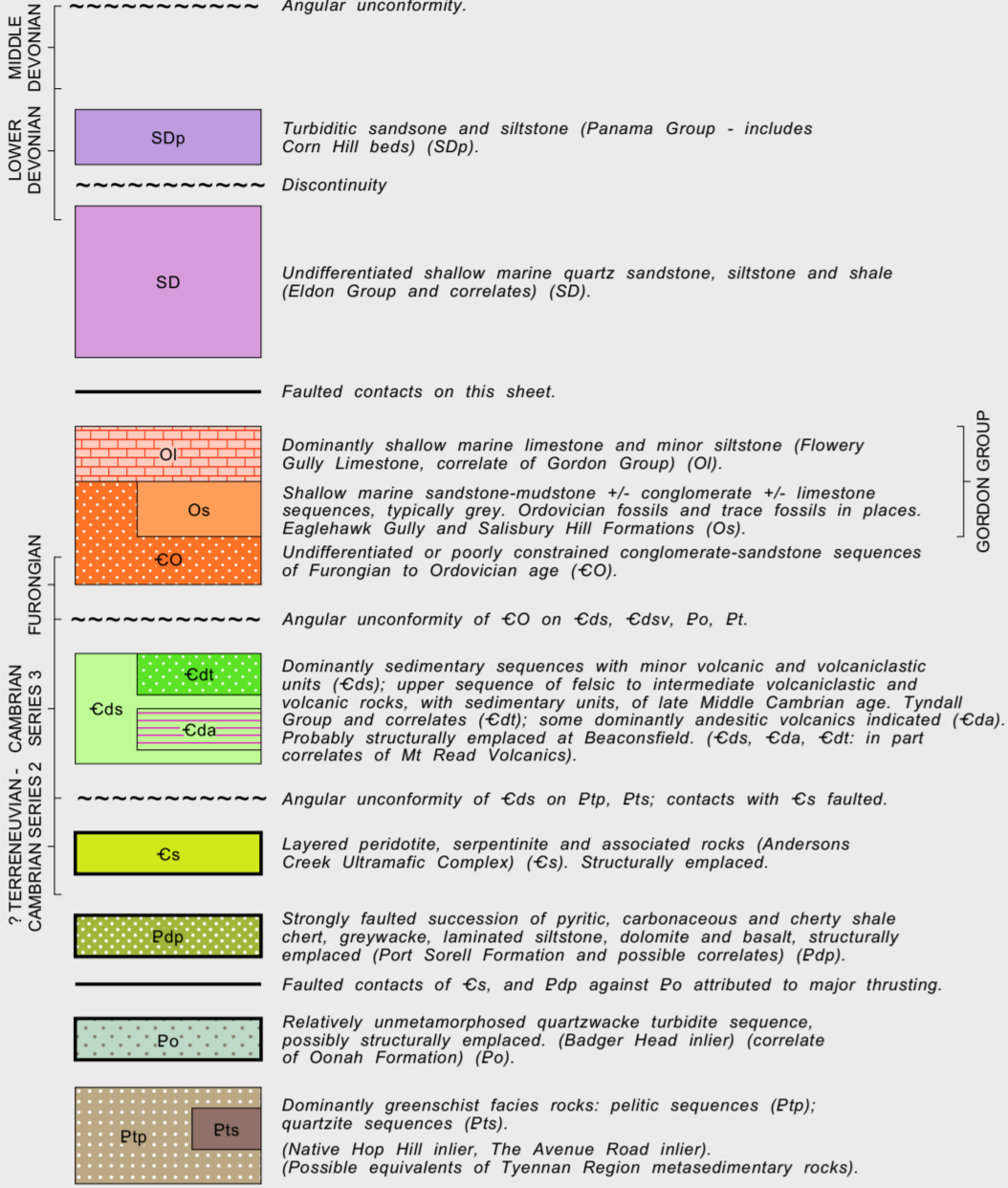
Tasmanian Government
Department of State Growth
MINERAL RESOURCES TASMANIA

GEOLOGY OF NORTHEAST TASMANIA

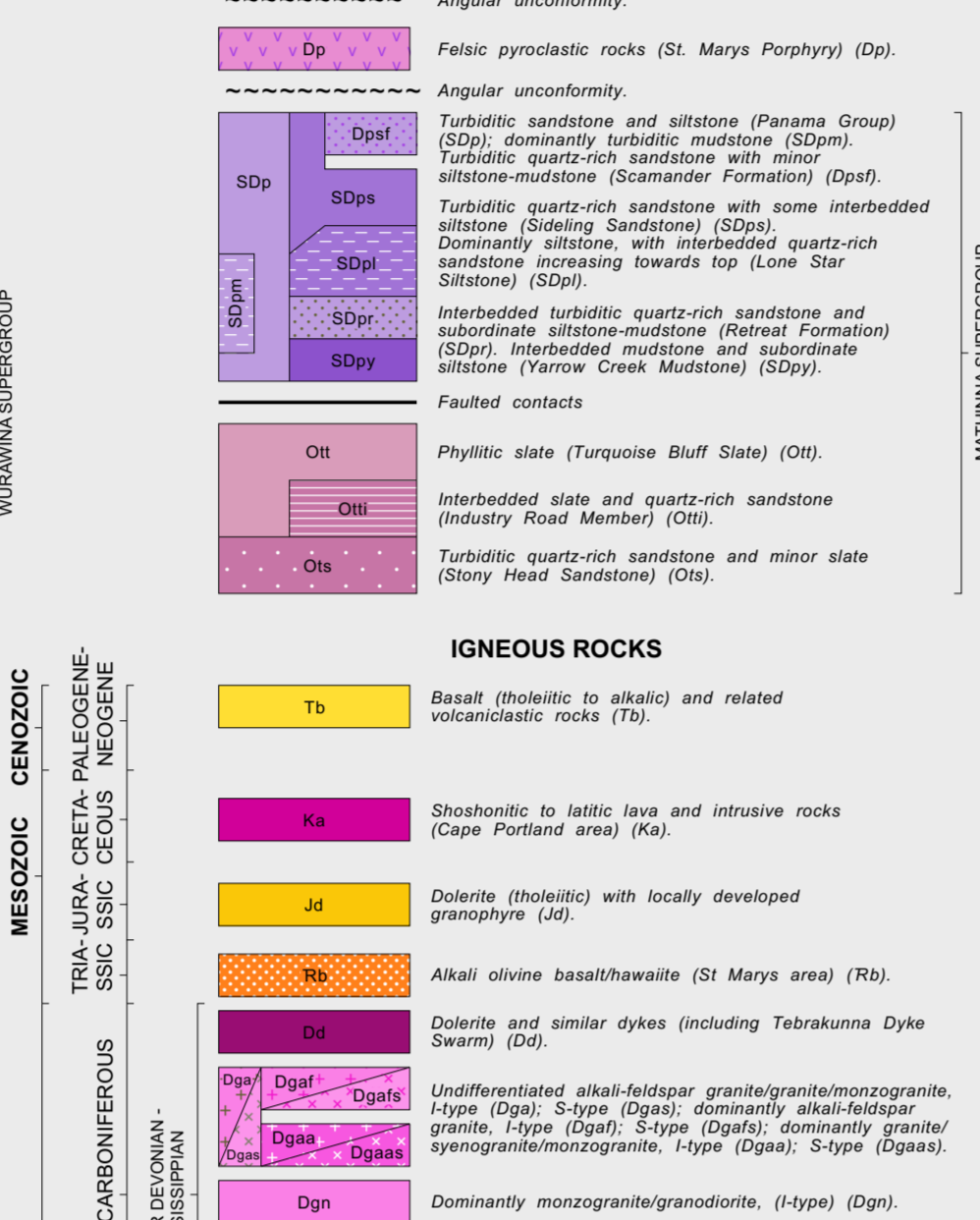
SCALE 1:250 000



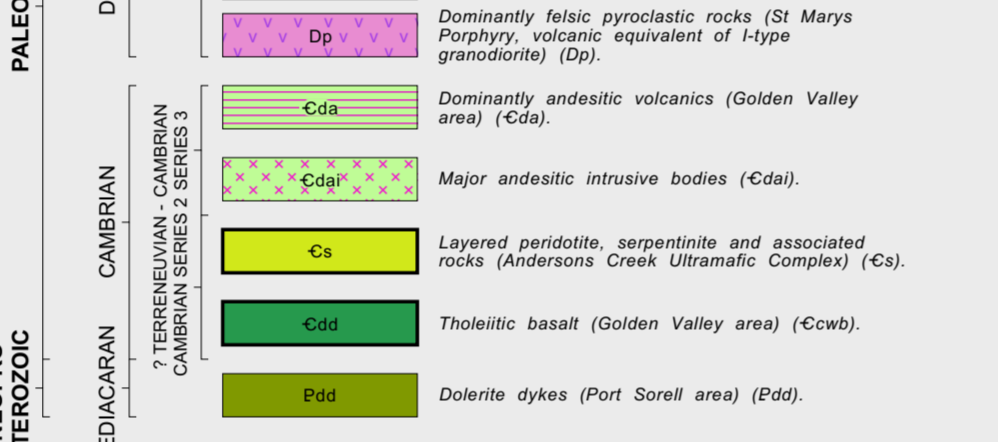
WEST OF RIVER TAMAR



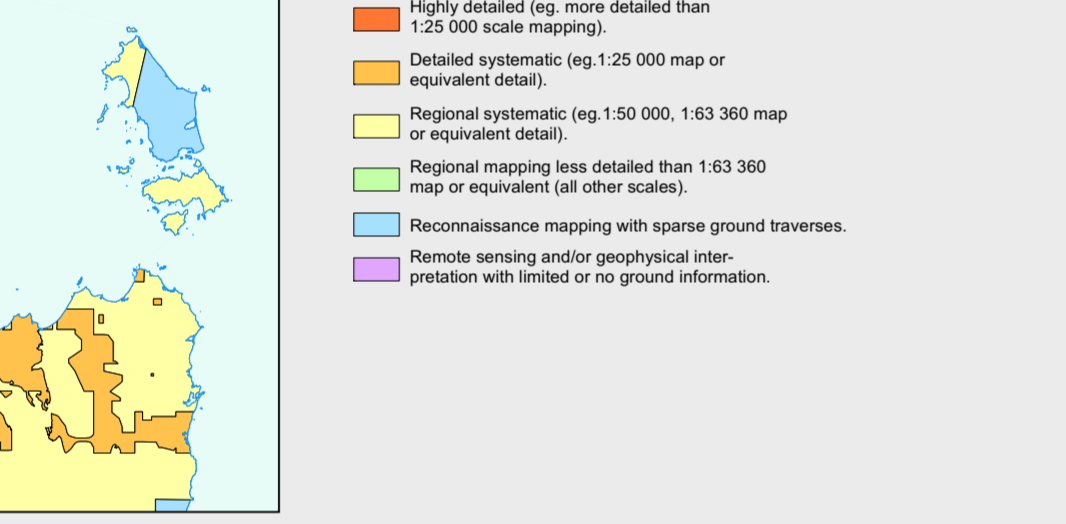
EAST OF RIVER TAMAR



IGNEOUS ROCKS



SOURCE MAPPING



The geological data for this map were compiled by:
D.G. Coleman & B. St. John (1988), D.G. Coleman & B. St. John (1990), D.G. Coleman & B. St. John (1992), D.G. Coleman & B. St. John (1994), D.G. Coleman & B. St. John (1996), D.G. Coleman & B. St. John (1998), D.G. Coleman & B. St. John (2000), D.G. Coleman & B. St. John (2002), D.G. Coleman & B. St. John (2004), D.G. Coleman & B. St. John (2006), D.G. Coleman & B. St. John (2008), D.G. Coleman & B. St. John (2010), D.G. Coleman & B. St. John (2012), D.G. Coleman & B. St. John (2014), D.G. Coleman & B. St. John (2016), D.G. Coleman & B. St. John (2018), D.G. Coleman & B. St. John (2020).

LOCATION DIAGRAM

