

# PIPERS RIVER

Geological Survey of Tasmania  
Department of Mines — Hobart

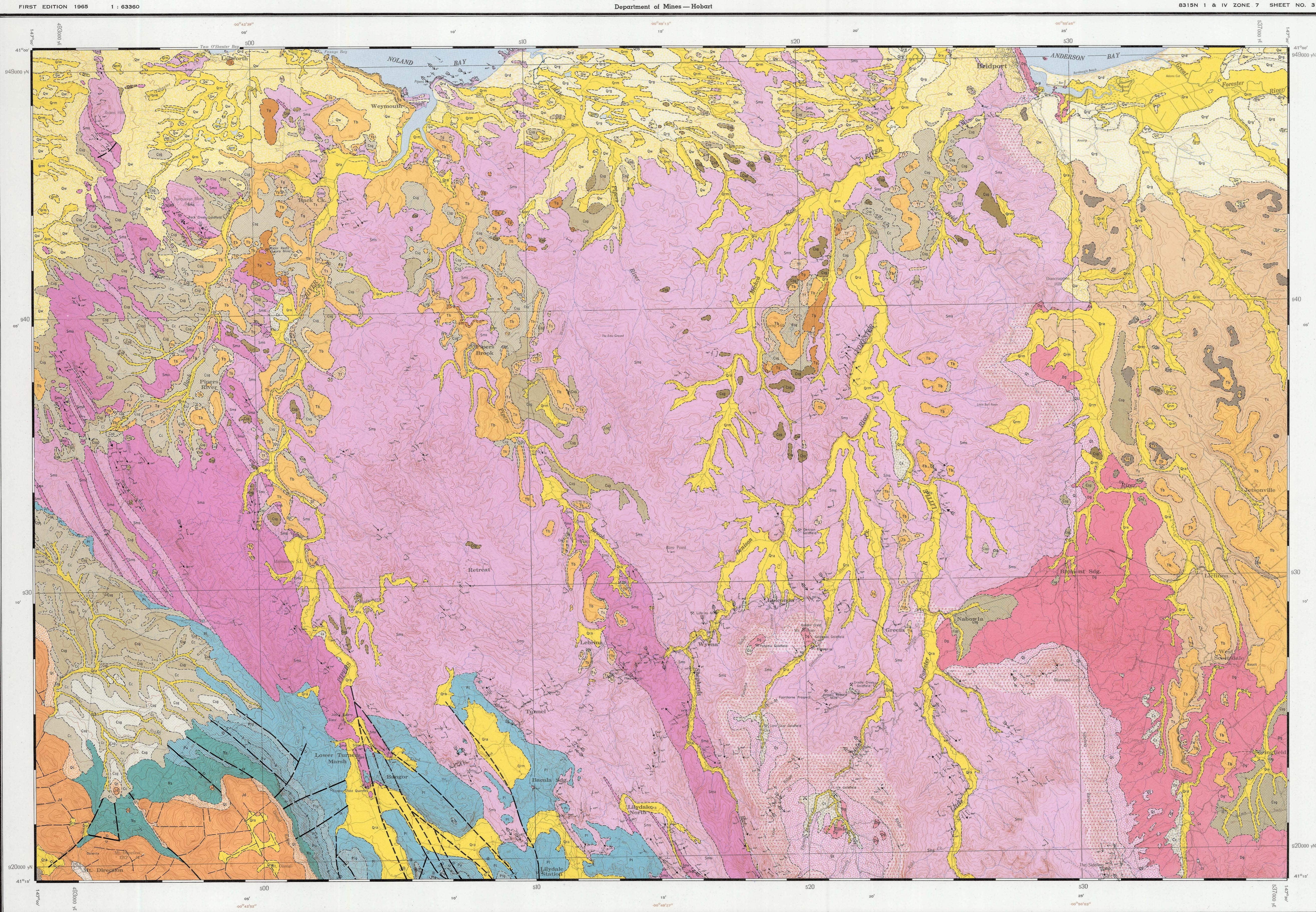
GEOLOGICAL ATLAS 1 MILE SERIES  
8315N 1 & IV ZONE 7 SHEET NO. 31



## REFERENCE

- |            |          |   |                                       |
|------------|----------|---|---------------------------------------|
| QUATERNARY | Qm       | Marsh and swamp deposits  |                                       |
|            | Qra      | Alluvial deposits, including younger gravels  |                                       |
|            | Qrd      | Dune sand   |                                       |
|            | Qw       | Windblown and locally derived sand  |                                       |
|            | Qt       | Dolerite talus  |                                       |
|            | Qt       | Basalt talus  |                                       |
|            | Qt       | Machinna Beds talus   |                                       |
|            | Qrg      | Older gravels, Qrg' = 25' erosional terrace   |                                       |
|            | Cenozoic | Cc  | Silt and clay with occasional pebbles |
|            |          | Cag   | Angular gravel, mainly vein quartz    |
| Cag        |          | Rounded and angular gravel, mainly vein quartz  |                                       |
| Cag        |          | Rounded gravel, mainly vein quartz  |                                       |
| Cag        |          | Quartz granule sand with pebbles  |                                       |
| Cag        |          | Medium grained sand   |                                       |
| Cag        |          | Ferruginous, pisolitic gravel with ironstone blocks<br>Cag' = ironstone horizon       |                                       |
| Cs         |          | Sandstone and conglomerate  |                                       |
| TERTIARY   |          | Ts  | Siliceous conglomerate                |
|            |          | Ta  | Angular gravel, mainly vein quartz    |
|            | Ta       | Rounded and angular gravel, mainly vein quartz  |                                       |
|            | Ta       | Rounded gravel, mainly vein quartz  |                                       |
|            | Ts       | Ferruginous zone<br>Sandstone and conglomerate<br>Dolerite boulder and cobble horizon |                                       |
| Mesozoic   | Triassic | Unconformity  |                                       |
|            | Ts       | Sandstone   |                                       |
|            | Ts       | Upper with pebbly horizons a and b  |                                       |
| Paleozoic  | Permian  | Liffey Group  |                                       |
|            | Pm       | Lower, including conglomerate and pebbly mudstone and sandstone                       |                                       |
|            | Pm       | Contact metamorphosed<br>Predominantly siltstone and sandstone                        |                                       |
| Silurian   | Ss       | Predominantly slate and phyllite  |                                       |
|            | Ss       | MACHINNA BEDS   |                                       |

- ### Igneous Rocks
- |    |  |
|----|--|
| Tb | TERTIARY Basalt<br>Sub basalt tuff   |
| Jd | JURASSIC Dolerite  |
| Dg | DEVONIAN Granodiorite<br>(Dg' = finer grained and more leucocratic phases) |
- 
- |       |  |
|-------|--|
| ---   | Geological boundary — position approximate   |
| - - - | Geological boundary — inferred   |
| ↗     | Strike and dip of beds — right way up  |
| ↖     | Strike and dip of overturned beds  |
| ↔     | Strike and dip of beds — facing unknown  |
| ⊥     | Vertical bedding   |
| ⊥     | Major anticline, inferred  |
| ⊥     | Major syncline, inferred   |
| ↘     | Plunge of F <sub>1</sub> , minor anticline   |
| ↙     | Plunge of F <sub>1</sub> , minor syncline  |
| ↘     | Plunge of F <sub>1</sub> , folds   |
| ↙     | Plunge of F <sub>1</sub> , minor antiform  |
| ↙     | Plunge of F <sub>1</sub> , minor synform   |
| ---   | Fault, position approximate (down thrown side indicated)                             |
| ---   | Fault, concealed   |
| ↗     | Strike and dip of slaty cleavage (S <sub>1</sub> )                                   |
| ↖     | Strike and dip of strain slip cleavage (S <sub>2</sub> )                             |
| ↘     | Plunge of Lineation L <sub>1</sub> , bedding/cleavage (S <sub>1</sub> ) intersection |
| ↙     | Plunge of Lineation L <sub>1</sub> , S <sub>1</sub> /S <sub>2</sub> intersection     |
| ↔     | Plunge of slickensides   |
| ↔     | Direction of movement of sediment bearing currents                                   |
| ↔     | Trend of sediment bearing currents   |
| ⊙     | Macrofossil locality   |
| ⊙     | Plant fossil locality  |
| ⊙     | Mine or prospect   |
| ⊙     | Alluvial Workings  |
| ⊙     | Minor mineral occurrence   |
| ---   | Lineament, photo interpreted   |



CONTROL: 2nd and 3rd Order Triangulation based on Lockman Astronomical Station Lat. 11° 38' 23.88" S Long. 147° 17' 49.725" E

DETAIL: Aerial Photography 1956

PROJECTION: Transverse Mercator

LEVEL DATUM: Mean Sea Level Hobart

NOMENCLATURE: Approved by the Nomenclature Board of Tasmania

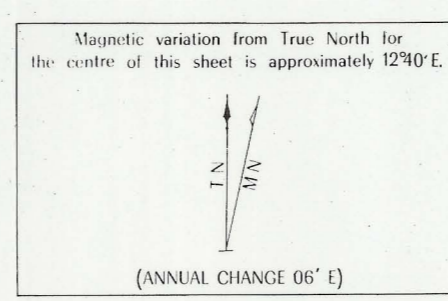
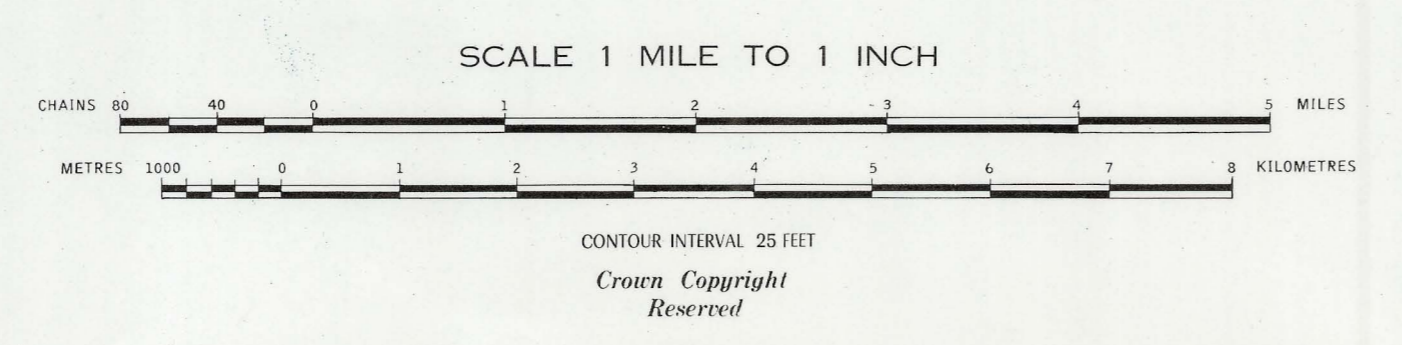
GRID CONVERGENCE: Based on Longitude 146° 00' E. To obtain True Bearing use correction as shown in brown in margin of map.

Trig. Stations: 2nd and 3rd Order, 1st Order, State Permanent Mark

House, Windpump, Water Tower, Mine, Lighthouse, Waterhole, Electric Transmission Line, Roads, Fallowing Track, Foot or Pack Track, Gate, Cattle-grid Bridge, Railway

INDEX TO ADJOINING SHIFTS

BEACONSFIELD	PIPERS RIVER	RINGBROOMA
FRANKFORD	LAUNCESTON	ALBERTON



Seam or Mark, Quarry, Gravel Pit, Cliff, Contours, Depression Contours

Geology by B. Marshall, B.Sc., ARCS, F.G.S., C. M. Barton, B.Sc., Ph.D., F.G.S., D. J. Jennings, B.Sc., H. Naqvi, B.Sc., T. D. Hughes, B.Sc., Chief Geologist.

Base map adapted from 40 chain to 1 inch sheets produced by the Lands and Surveys Department, Hobart.

Geological Map production by Drawing Office, Department of Mines, Hobart.

E. Williams, B.Sc., Ph.D., F.G.S., Senior Geologist in charge of Regional Mapping.

Compiled under the direction of J. G. Symons, B.E. Director of Mines. Issued under the authority of the Honourable Eric E. Reece, Minister for Mines. Published 1965.

