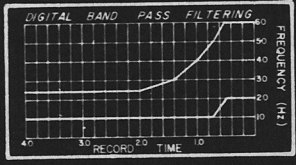


ESSO EXPLORATION AND PRODUCTION AUSTRALIA INC.

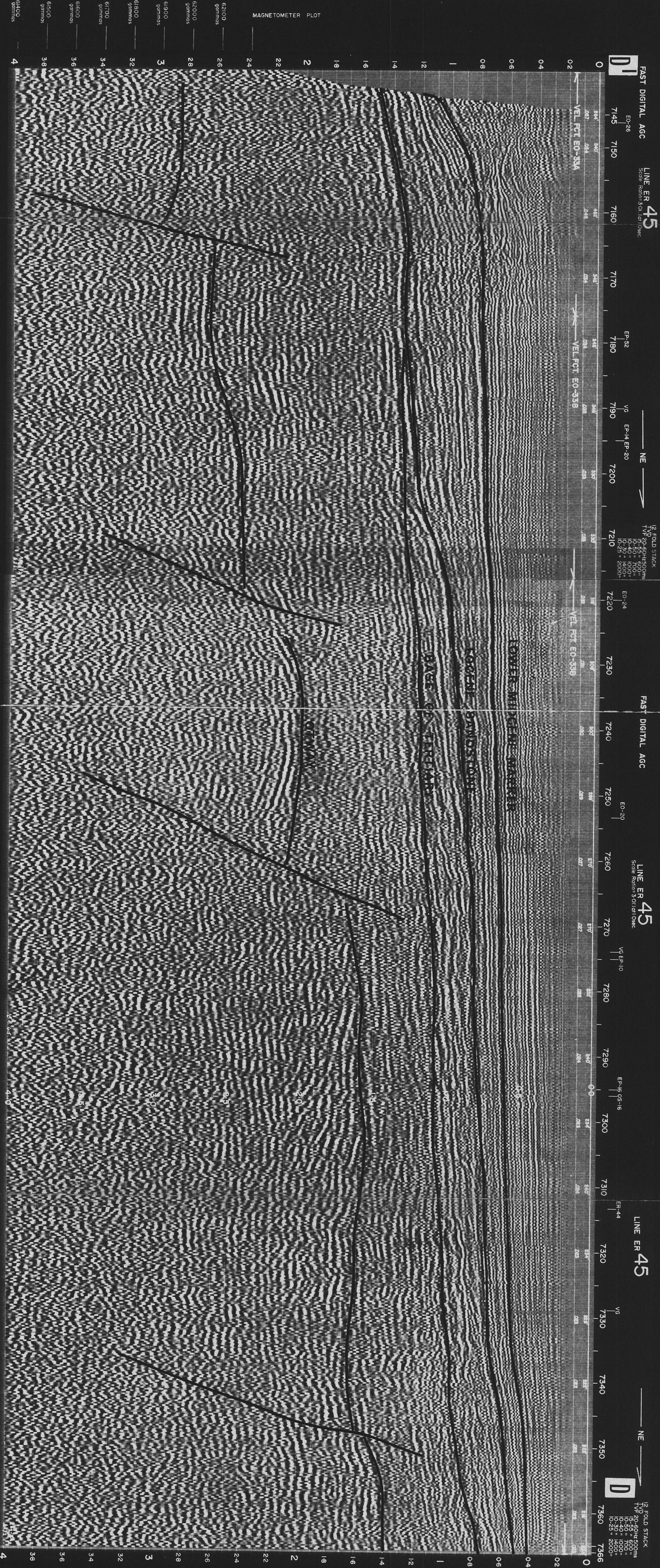
FIGURE 5d

Dwg 1122 G 8



GSI DIGITAL PROCESSING CENTRE	
SYDNEY, N.S.W., AUSTRALIA	
SAMPLE PERIOD	4 ms
TAR	B = 10 db, A = 2.5 db/sec
Gate	0 to 4000 ms
NMO Equalization gate	2000 to 3000 ms
DECON	64 pts, 4 ms dec, Design gate 200 to 2732 ms, No. of gates/trace 2, Design gate 1466 to 4000
DIGITAL FILTER	35 pts, 4 ms dec
DPS	OWBS <input type="checkbox"/> , TVD <input type="checkbox"/> , DCN <input type="checkbox"/> , ARD <input type="checkbox"/> , AR2 <input type="checkbox"/> , DGF <input type="checkbox"/> , TVF <input type="checkbox"/> , M-R <input type="checkbox"/>
TIAC Reg	2974, Hold Type 3068, P/B Gain 9 db
RSI Input Crew	851, Date JAN '69

SYDNEY, N.S.W., AUSTRALIA	
AREA	OTWAY
LINE	ER-45
RECORDING PARAMETERS	8 Pops/S.P., S. P. off Gp. 24
Source	AQUAPULSE
Charge Size	20 lbs
Fill Time	1-5 sec
Prop.	50 lbs
Cable Length	7590 ft, Group Interval 330 ft
S.P. Interval	660 ft
Pops / Vertical Gain	4.1 Processed 12 Fold
Resolving Filter	100
WGC	Field Crew 64, Date NOV '68



NEG. NO. MAGNETOMETER DATA LINE ER 45 FAST DIGITAL AGC

SYDNEY, N.S.W., AUSTRALIA

7145 7150 7160 7170 7180 7190 7200 7210 7220 7230 7240 7250 7260 7270 7280 7290 7300 7310 7320 7330 7340 7350 7360

VEL. PCT. EO-33A VEL. PCT. EO-33B VEL. PCT. EO-33C VEL. PCT. EO-33D

ER-26 ER-82 VE ER-14 ER-20 VE ER-10 ER-14 ER-18 ER-44

NE

12 FOLD STACK
TVF 25-50Hz/500ms
IC 50 = 700
IC 25 = 1400
IC 25 = 2000

LOWER MURFREESBORO MARL

TERRAPIN

12 FOLD STACK
TVF 25-50Hz/500ms
IC 50 = 700
IC 25 = 1400
IC 25 = 2000

NE

12 FOLD STACK
TVF 25-50Hz/500ms
IC 50 = 700
IC 25 = 1400
IC 25 = 2000

12 FOLD STACK
TVF 25-50Hz/500ms
IC 50 = 700
IC 25 = 1400
IC 25 = 2000

12 FOLD STACK
TVF 25-50Hz/500ms
IC 50 = 700
IC 25 = 1400
IC 25 = 2000

12 FOLD STACK
TVF 25-50Hz/500ms
IC 50 = 700
IC 25 = 1400
IC 25 = 2000

12 FOLD STACK
TVF 25-50Hz/500ms
IC 50 = 700
IC 25 = 1400
IC 25 = 2000

12 FOLD STACK
TVF 25-50Hz/500ms
IC 50 = 700
IC 25 = 1400
IC 25 = 2000

12 FOLD STACK
TVF 25-50Hz/500ms
IC 50 = 700
IC 25 = 1400
IC 25 = 2000

12 FOLD STACK
TVF 25-50Hz/500ms
IC 50 = 700
IC 25 = 1400
IC 25 = 2000

12 FOLD STACK
TVF 25-50Hz/500ms
IC 50 = 700
IC 25 = 1400
IC 25 = 2000

12 FOLD STACK
TVF 25-50Hz/500ms
IC 50 = 700
IC 25 = 1400
IC 25 = 2000

12 FOLD STACK
TVF 25-50Hz/500ms
IC 50 = 700
IC 25 = 1400
IC 25 = 2000

12 FOLD STACK
TVF 25-50Hz/500ms
IC 50 = 700
IC 25 = 1400
IC 25 = 2000

12 FOLD STACK
TVF 25-50Hz/500ms
IC 50 = 700
IC 25 = 1400
IC 25 = 2000

12 FOLD STACK
TVF 25-50Hz/500ms
IC 50 = 700
IC 25 = 1400
IC 25 = 2000

12 FOLD STACK
TVF 25-50Hz/500ms
IC 50 = 700
IC 25 = 1400
IC 25 = 2000

12 FOLD STACK
TVF 25-50Hz/500ms
IC 50 = 700
IC 25 = 1400
IC 25 = 2000

12 FOLD STACK
TVF 25-50Hz/500ms
IC 50 = 700
IC 25 = 1400
IC 25 = 2000

12 FOLD STACK
TVF 25-50Hz/500ms
IC 50 = 700
IC 25 = 1400
IC 25 = 2000