

**HEMATITE PETROLEUM  
PTY. LTD.**

**KING ISLAND SHELF AREA**

**TPR  
OR - 071**

**CONTENTS**

INDEX MAP - KING ISLAND SHELF AREA

OS-10 - FIG. 5 - OTWAY BASIN

OS-16 - FIG. 5 - OTWAY BASIN

EO-21

EO-22

EO-33

EO-34 (THE SHELF BASIN)

EO-59 (THE SHELF BASIN)

EP-32

EP-37

EP-43 (THE SHELF BASIN)

OS-5

OS-9

OS-12

KING ISLAND SHELF AREA - NAUTILUS BEDS THICKNESS

KING ISLAND SHELF AREA - BASE TERTIARY

KING ISLAND SHELF AREA - TOP BASEMENT





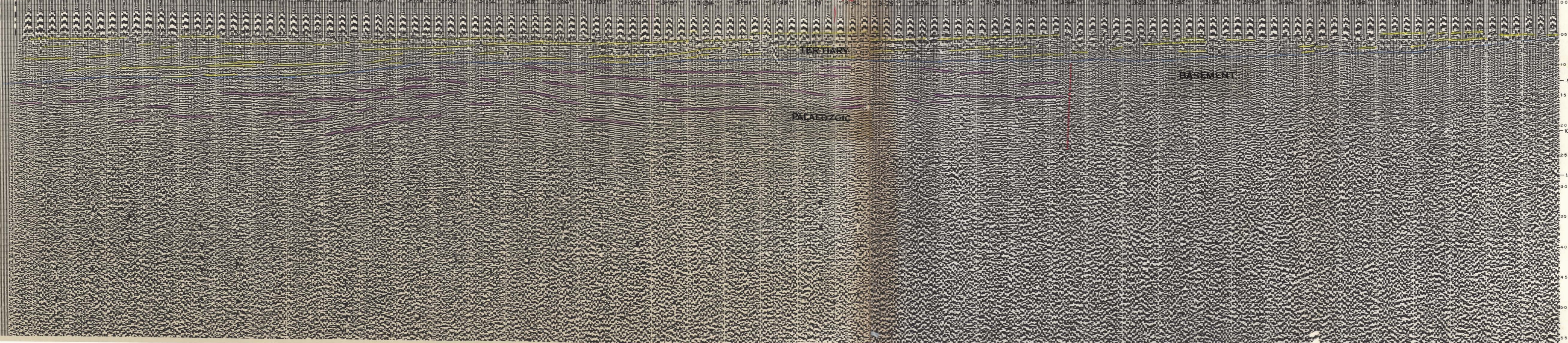
037003

OTWAY/1 IN 3 OR-071



SW

NE



OS-10  
 3-78 1-25  
 Taps 5 75  
 100% Contrast

OS-10

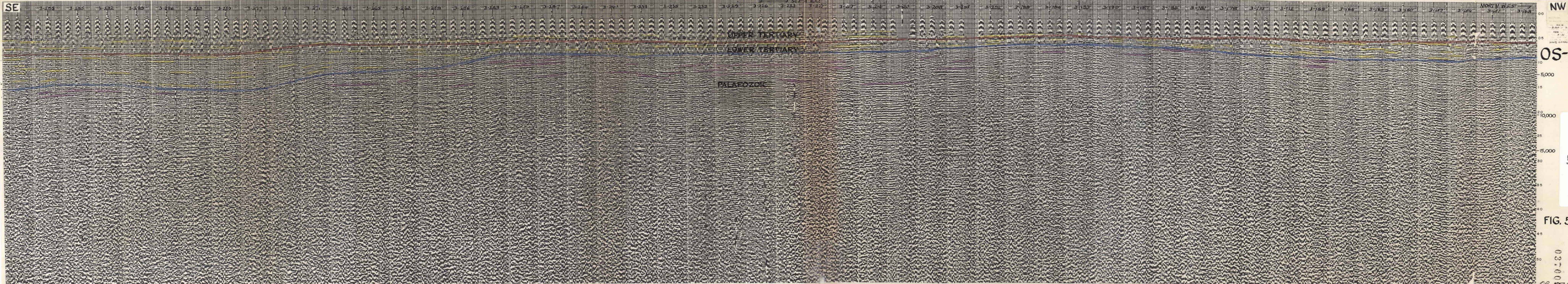
0.0  
 0.5  
 1.0  
 5,000  
 15,000  
 20,000  
 25,000  
 30,000  
 35,000  
 40,000  
 45,000  
 50,000  
 55,000

5 cm

FIG. 5

000004  
 OR-071





SE

NW

UPPER TERTIARY

LOWER TERTIARY

PALAEZOIC

OS-16

5,000

10,000

15,000

20,000

25,000

30,000

35,000

40,000

45,000

50,000

OR-071

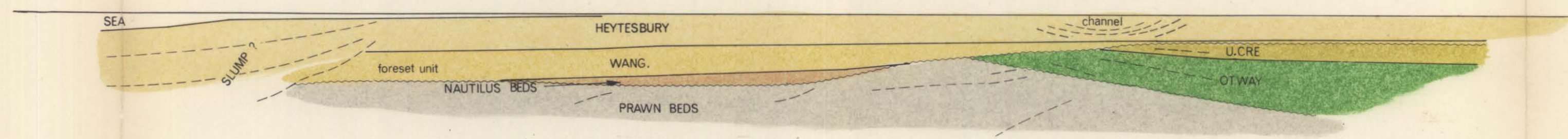
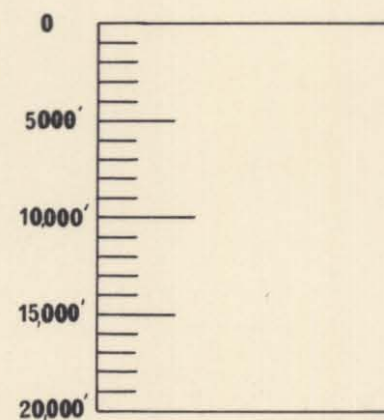
FIG. 5

5 cm

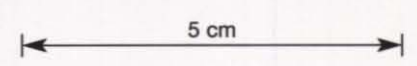
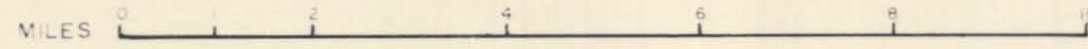
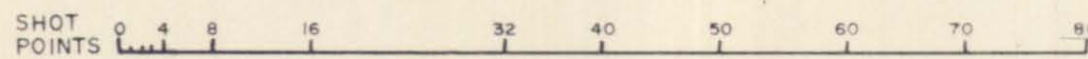


# EO-21

END 5120      5150      EO-26      5200      EO-24      EO-20 5250      10      5300      5340 END



H to V Scale 1:1





EO-22

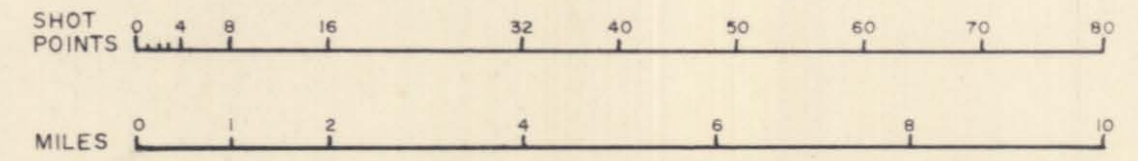
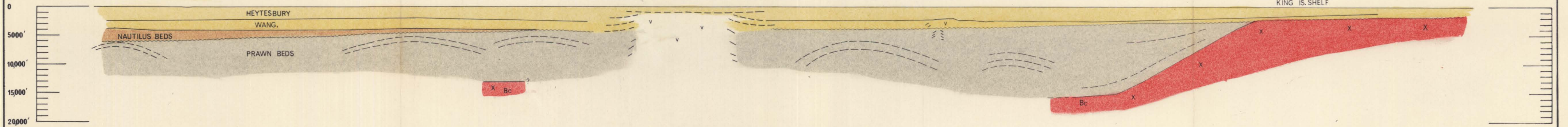
OTWAY/KING

037007

# EO-22

NW EO-48 9300 EO-50 OS-10 EO-71 EO-37 9200 OS-11 EO-39 9150 EO-41 OS-12 EO-43 9050 EO-45 EO-47 OS-13 8960 **SE**  
 EP-18 EO-35 9250 EO-52 9100 9050 8960 END

PRAWN No 1  
 5 MILES SW



L. C. REED REPORT, JUNE 1968

OR-071

5

5 cm

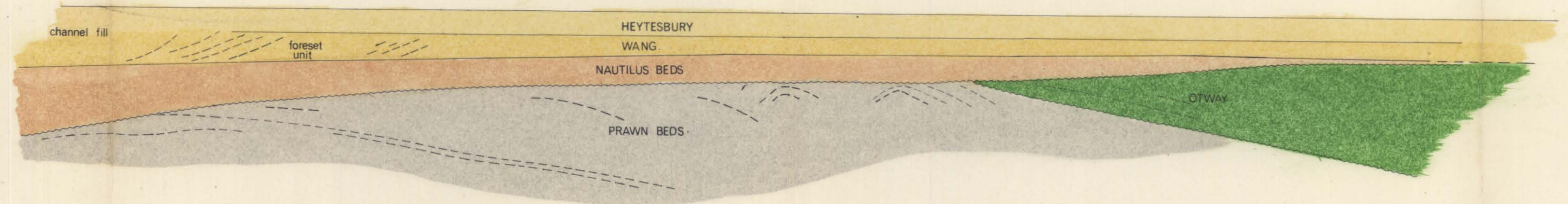
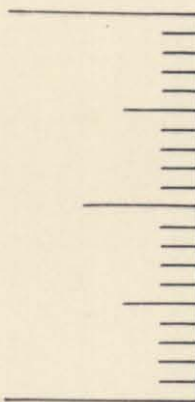
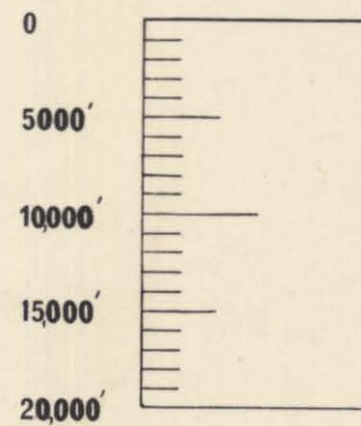


# EO-33

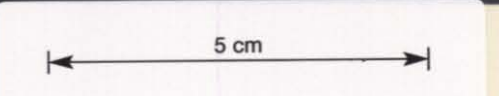
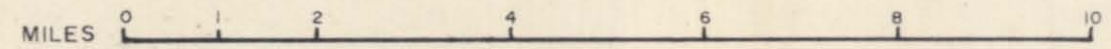
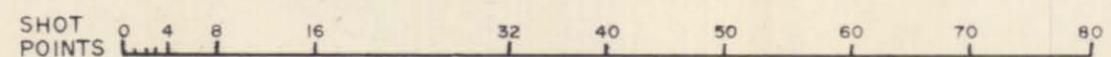
SW

NE

END    EO-26    6200    EP-14    EP-52    6250    EO-24    EP-20    6300    EO-20    EP-16    EP-10    OS-16    EP-18    6350    6400    END



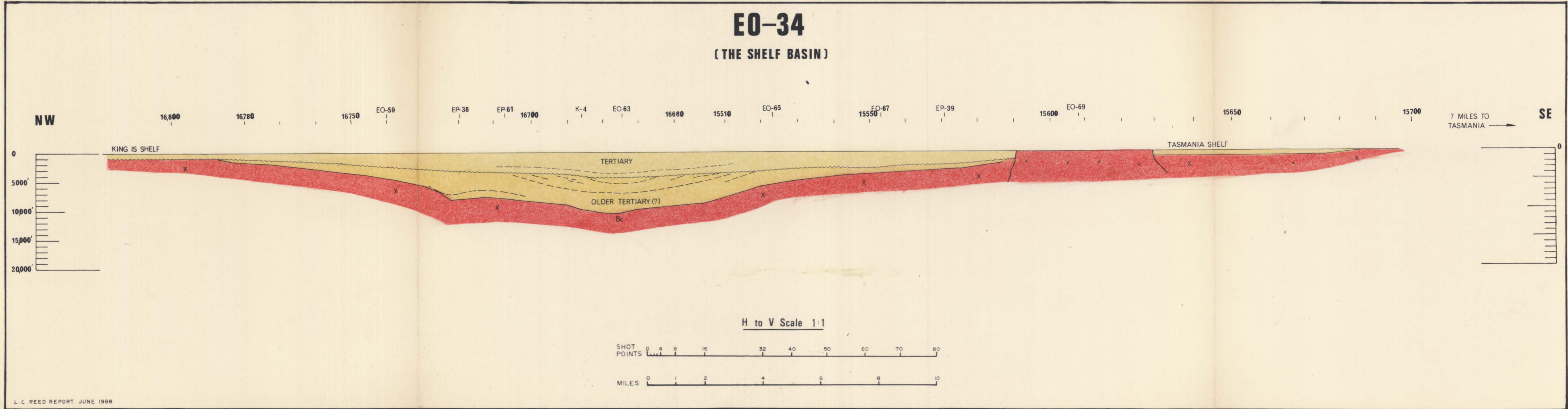
H to V Scale 1:1





# EO-34

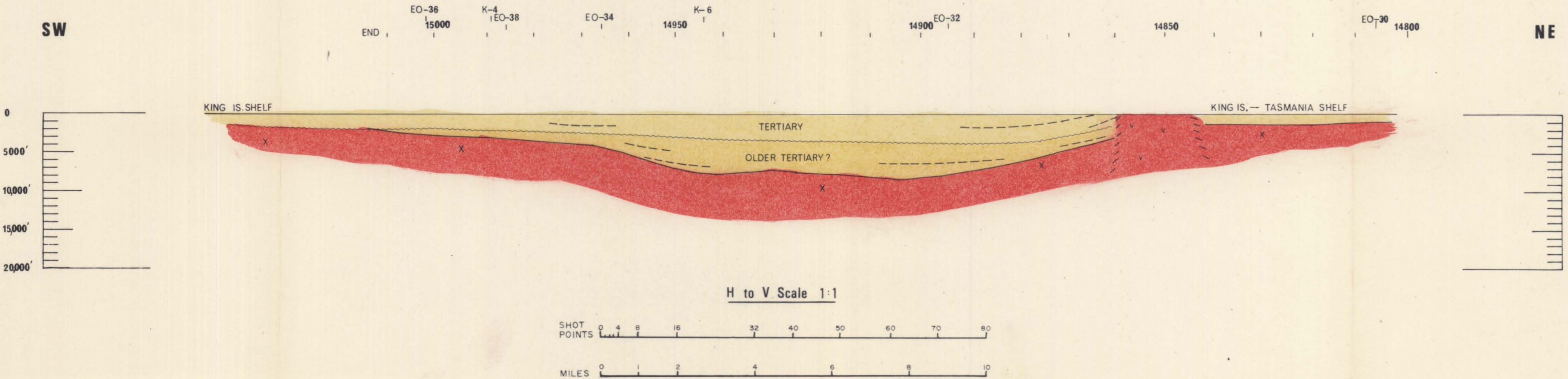
(THE SHELF BASIN)





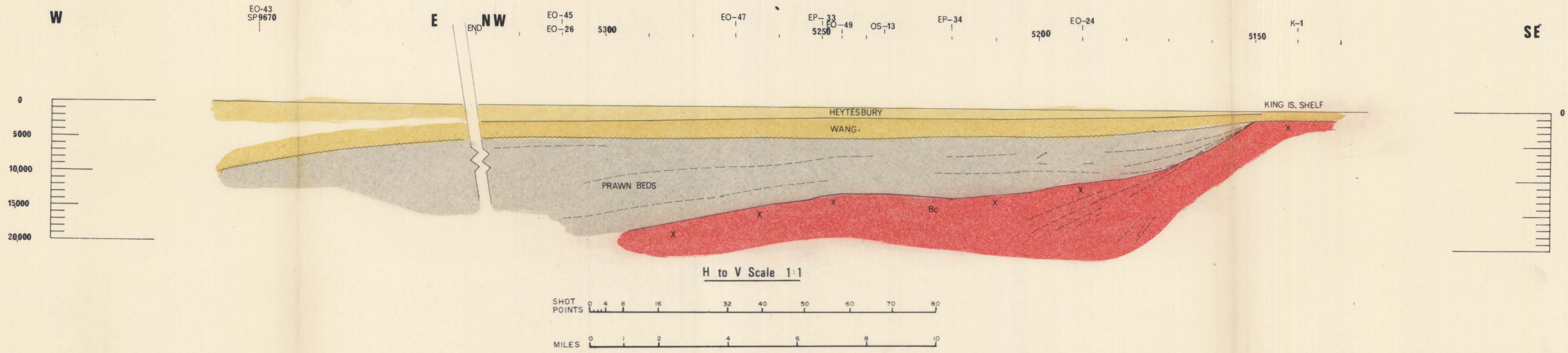
# EO-59

( THE SHELF BASIN )



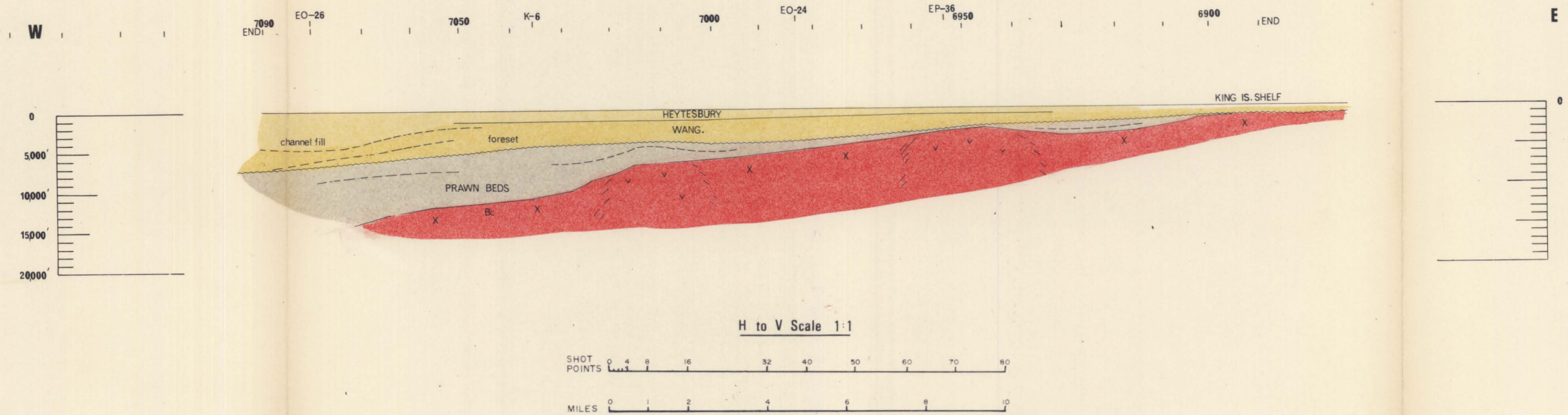


# EP-32





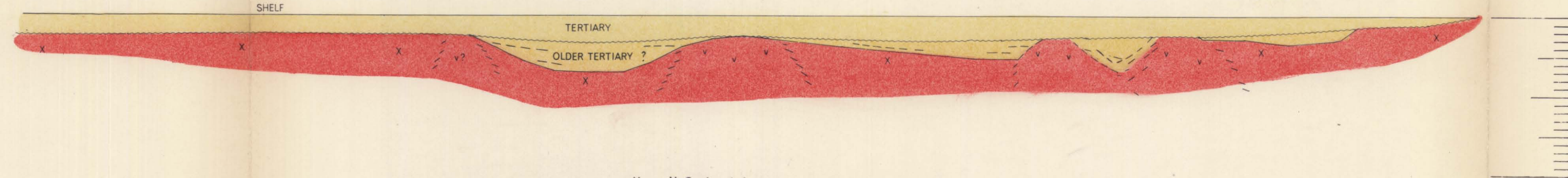
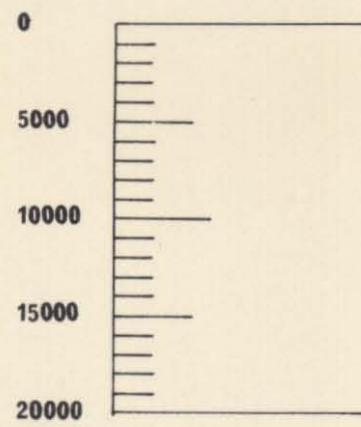
# EP-37



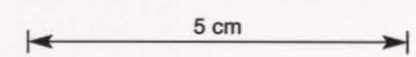
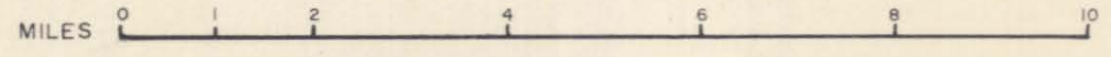
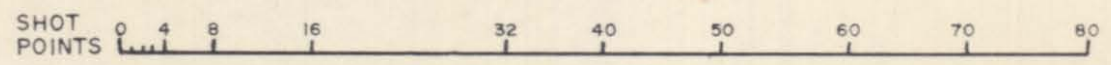


# EP-43 (THE SHELF BASIN)

W EO-26  
END 8000 EP-61 8050 EO-63 8100 EP-44 EP-65 815 EO-67 82 K-6 EP-39 823 END E



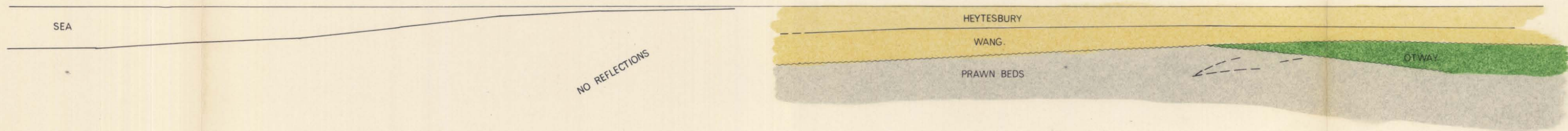
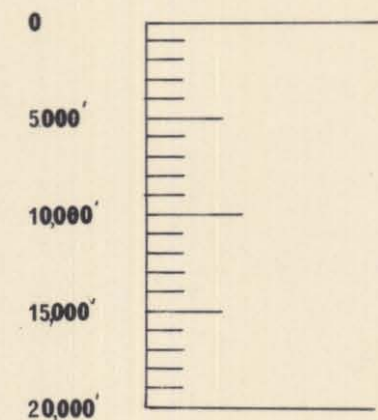
H to V Scale 1:1



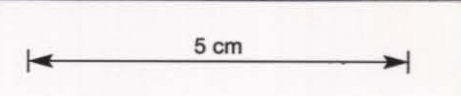
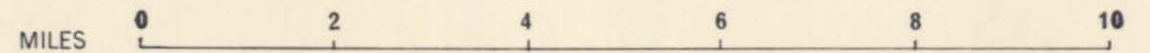


# OS-5

END | 10 | 50 | EO-26 | EO-24 | 100 | EO-20 | EP-10 | OS-16 | 150 | END



H to V Scale 1:1



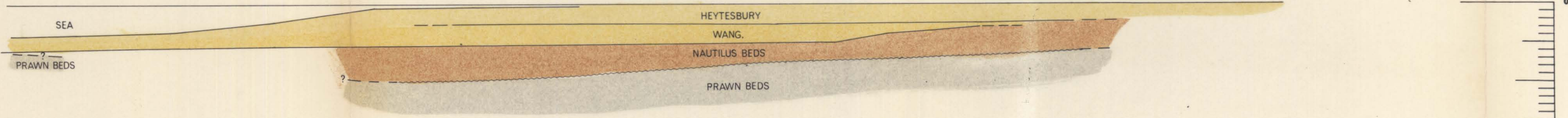
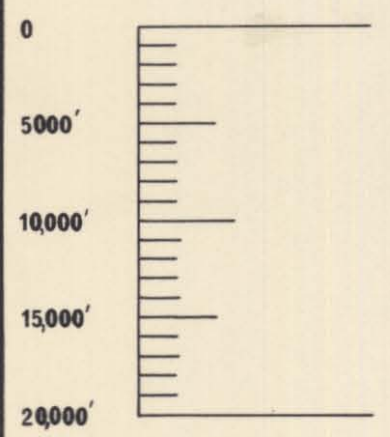


# OS-9

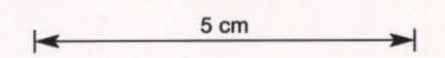
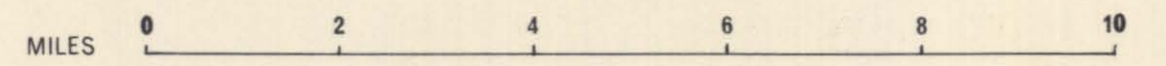
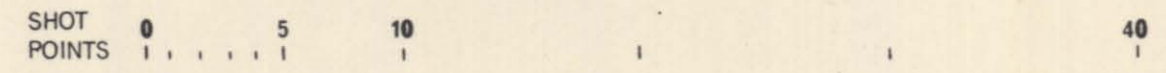
SW

NE  
END

185 180 150 EO-26 100 EO-24 EO-20 OS-16 50 EO-18 EO-71 10



H to V Scale 1:1

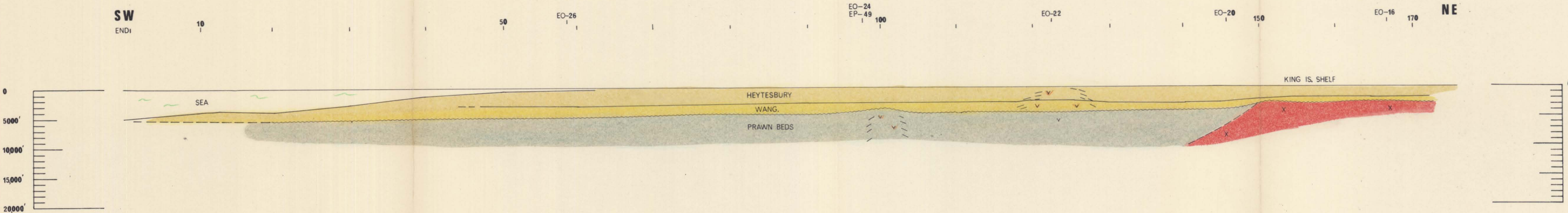




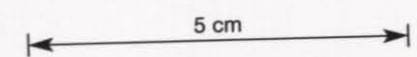
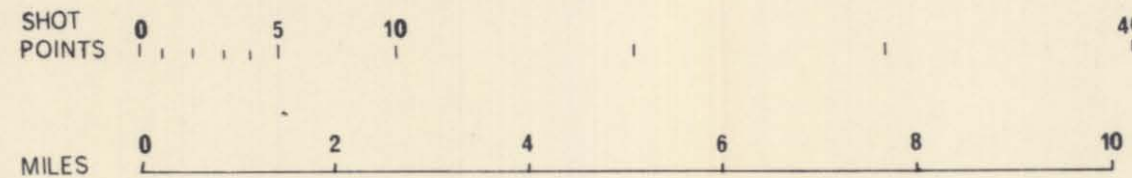
# OS-12

SW  
END

NE



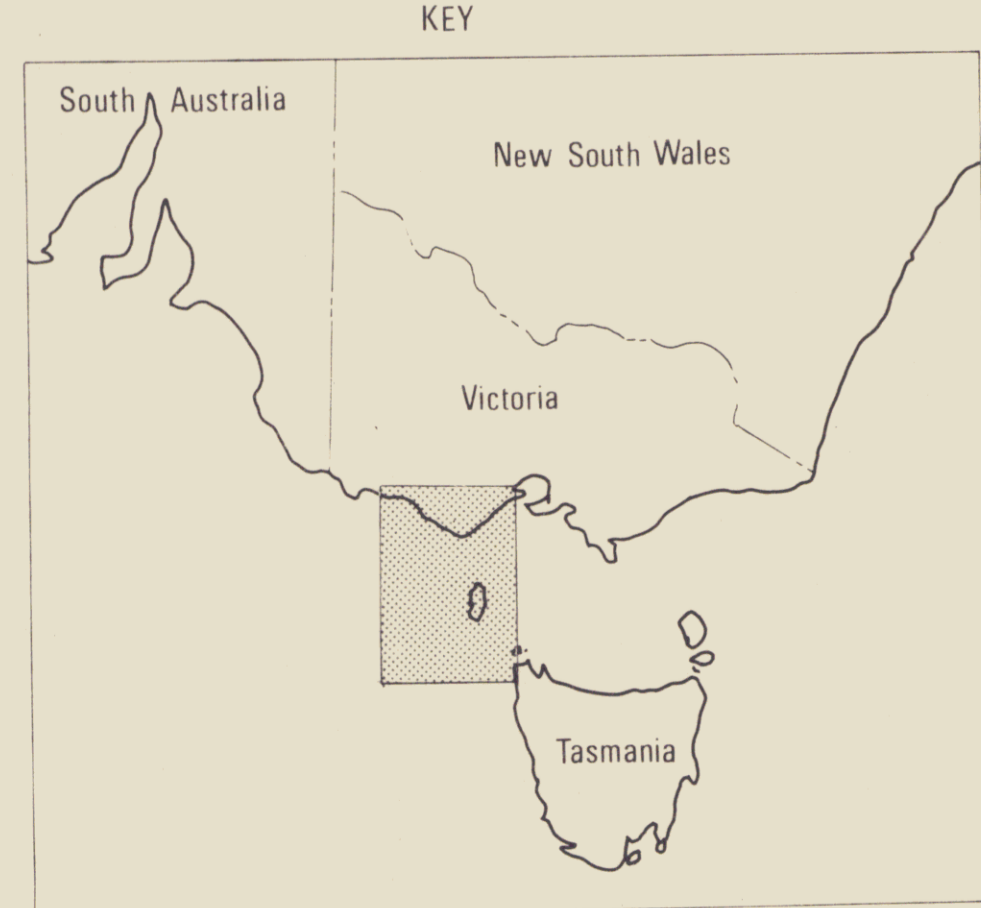
H to V Scale 1:1





# VICTORIA

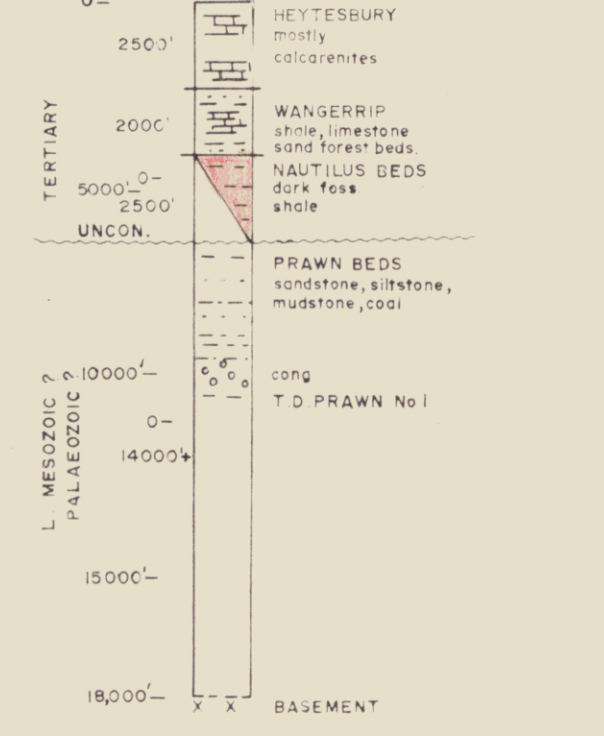
VICTORIA  
TASMANIA



### EXPLANATION

- In Shelf Basin contours represent thickness of older Tertiary (T)
- 500 --- Water depth
- (V) Igneous intrusions
- OS-5 etc. Cross sections

### STRAT GUIDE



037017

Hematis Petroleum Pty Ltd.

**KING IS. SHELF AREA**

**NAUTILUS BEDS THICKNESS**

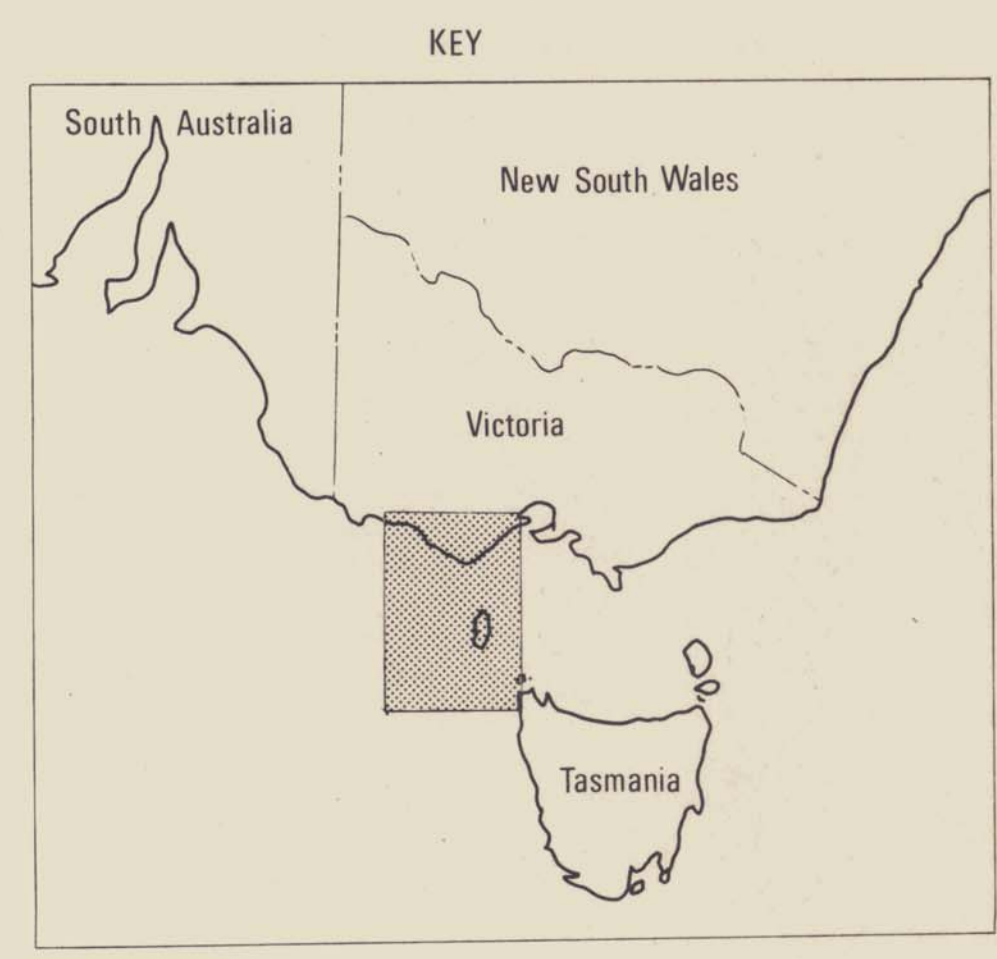
Scale 1:250,000

OTWAY/KING



# V I C T O R I A

VICTORIA  
TASMANIA



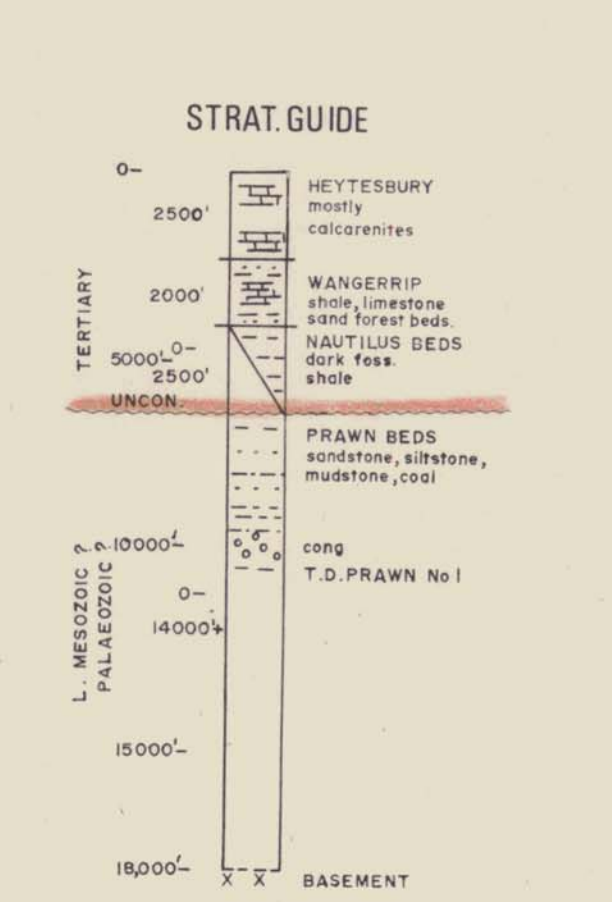
**EXPLANATION**

In Shelf Basin contours represent thickness of upper unit above unconformity.

(V) Igneous intrusions

OS-5 etc. Cross sections

— 500' — Water depth



037015

Hemette Petroleum Pty. Ltd.  
**KING IS. SHELF AREA**  
**BASE TERTIARY**

Scale 1 : 250,000

MILES

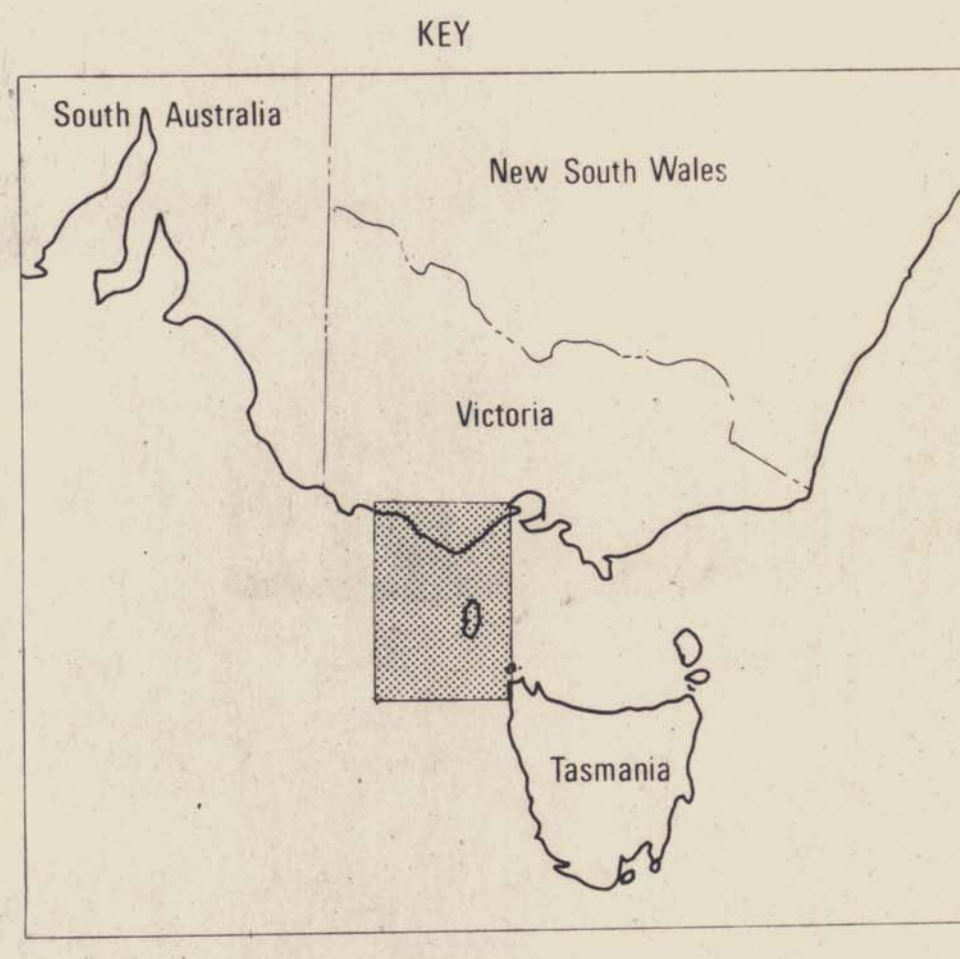
1:1 Dimension

C.C. Reed Report of June 1968



# VICTORIA

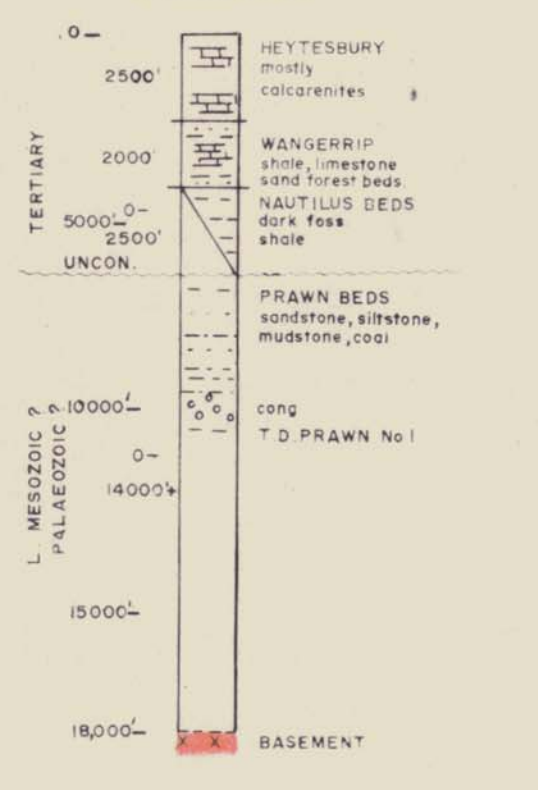
VICTORIA  
TASMANIA



### EXPLANATION

- In Shelf Basin contours also represent total thickness Tertiary.
- (S) Folding in Prawn Beds
- (V) Igneous intrusions
- OS-5 etc. Cross sections
- 500 Water depth

### STRAT GUIDE



037019

Hemette Petroleum Pty Ltd.  
**KING IS. SHELF AREA**  
**TOP BASEMENT**

Scale 1:250,000  
MILES